

To join our research group on TELEGRAM, please click on the links - <https://bit.ly/37T17JR> and <https://bit.ly/2svtU7k>

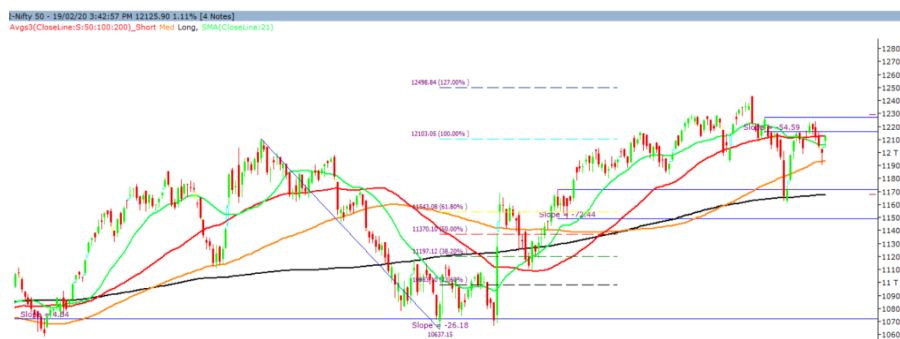
Thursday, 20<sup>th</sup> February, 2020

Indian Indices	Last Price	(%) Chg
BSE	41323.00	1.05
NSE	12130.30	1.15
World Indices		
Dow Jones	29348.03	0.40
Nasdaq	9817.18	0.87
Nikkei	23607.77	0.88
Hang Seng	27460.41	-0.71
FTSE	7457.02	1.02
Commodity	Last Price	(%) Chg
GOLD(\$/ounce)	1612.80	0.06
Silver (\$/Ounce)	18.37	0.32
Crude (\$/BBL)	59.44	0.54
Aluminium spot (\$/mt)	1719.25	-0.29
Copper SPOT (\$/mt)	5770.00	-0.20
Lead Spot (\$/MT)	1870.75	-0.23
Natural gas \$/MMBtu	1.96	0.51
Currency	Last Price	(%) Chg
USD-INR	--	--
EUR-INR	--	--
Bond	Last Price	(%) Chg
India 10 Yr Bond yield	--	--

52 Wk High (A group)			52 Wk Low (A group)		
Company	Close Price	52 Wk High	Company	Close Price	52 Wk Low
AEGIS	254	266	FCONSUM	20.7	20.5
ALKEM	2623	2720	GHCL	169	168
APOLLOH	1784	1790	HINDZINC	185	184
BAJFINA	4885	4886	SADBHAV	81.4	76.4
DIVISLAB	2195	2195	SOBHA	354	348

Source: BSE

### Market Technical Outlook



Nifty opened up with a gap and traded with positive bias throughout the day to close in green. On the daily chart, we are observing that prices after a bullish Hammer it has formed a Bullish Island Reversal. This suggests that momentum on the upside is likely to continue. At present, 12130 which is the 50-day SMA is initial resistance any close above 12130 would propel Nifty to 12200 – 12250 levels. On the downside, upward gap area of 12030 to 12042 may act as support for prices. **We reiterate our view that one needs to adopt cautiously positive approach at current level as stock activity is likely to continue.**

### News for stocks

<b>VODAIDEA</b>	Brickwork Ratings has downgraded the rating on the company's non-convertible debentures, aggregating to Rs 2,500 crore, from 'BWR BBB-' to 'BWR BB-'.
<b>STRTECH</b>	Company has received orders worth Rs 1,500 crore in new order bookings from European Telecom players. Orders range from optical connectivity solutions and network services.
<b>SUNTECK</b>	Response for Sunteck MaxXWorld at Naigaon continues to remain encouraging with number of units sold reaching a mark of 1800 apartments.

### Foreign Institutional Investments (FII's) Activities

Name of Segment	Net Buyer/seller	Rs In Cr
Index Futures	Net Buy	994.37
Stock Futures	Net Buy	767.95
<b>Net Future Position</b>	<b>Net Buy</b>	<b>1762.32</b>
Index Options	Net Buy	1538.50
Stock Options	Net Buy	43.26
<b>Net Options Position</b>	<b>Net Buy</b>	<b>1581.76</b>
FII In cash Segment	Net Sell	-190.66
DII In cash Segment	Net Buy	590.12
<b>Net Cash Position</b>	<b>Net Buy</b>	<b>399.46</b>

**Technical Levels for Nifty 50 Companies**

Company	Closing 19-02-2020	Buy/Sell Trigger	Resistance 1	Resistance 2	Support 1	Support 2
ADANI PORTS	371.30	371.03	374.72	378.13	367.62	363.93
ASIAN PAINT	1884.90	1876.33	1901.32	1917.73	1859.92	1834.93
AXIS BANK	741.05	740.50	745.65	750.25	735.90	730.75
BAJAJ-AUTO	3090.90	3091.75	3111.10	3131.30	3071.55	3052.20
BAJAJ FINSV	9758.65	9706.22	9832.43	9906.22	9632.43	9506.22
BAJFINANCE	4878.05	4848.38	4916.67	4955.28	4809.77	4741.48
BHARTIARTL	543.40	545.25	551.75	560.10	536.90	530.40
BPCL	475.55	475.35	481.20	486.85	469.70	463.85
BRITANNIA	3082.25	3077.75	3115.50	3148.75	3044.50	3006.75
CIPLA	447.50	444.70	452.00	456.50	440.20	432.90
COALINDIA	177.75	176.85	179.45	181.15	175.15	172.55
DRREDDY	3278.15	3278.32	3298.63	3319.12	3257.83	3237.52
EICHERMOT	18875.20	18874.92	19039.23	19203.27	18710.88	18546.57
GAIL	119.85	119.83	120.92	121.98	118.77	117.68
GRASIM	757.15	747.73	769.17	781.18	735.72	714.28
HCLTECH	605.75	609.33	614.67	623.58	600.42	595.08
HDFC	2377.25	2364.10	2398.15	2419.05	2343.20	2309.15
HDFCBANK	1227.20	1223.70	1233.50	1239.80	1217.40	1207.60
HEROMOTOCO	2251.60	2252.22	2277.38	2303.17	2226.43	2201.27
HINDALCO	188.10	187.03	189.67	191.23	185.47	182.83
HINDUNILVR	2292.15	2280.53	2319.82	2347.48	2252.87	2213.58
ICICIBANK	544.80	543.93	547.37	549.93	541.37	537.93
INDUSINDBK	1142.15	1142.05	1168.10	1194.05	1116.10	1090.05
INFRA TEL	225.10	221.85	231.45	237.80	215.50	205.90
INFY	800.45	800.48	804.82	809.18	796.12	791.78
IOC	114.20	113.78	114.92	115.63	113.07	111.93
ITC	206.70	205.90	207.95	209.20	204.65	202.60
JSWSTEEL	280.85	283.58	287.27	293.68	277.17	273.48
KOTAK BANK	1701.10	1712.17	1728.93	1756.77	1684.33	1667.57
LT	1281.40	1285.67	1294.73	1308.07	1272.33	1263.27
M&M	526.40	525.95	530.10	533.80	522.25	518.10
MARUTI	6756.60	6745.38	6866.17	6975.73	6635.82	6515.03
NESTLEIND	16785.05	16697.45	16919.10	17053.15	16563.40	16341.75
NTPC	112.05	112.07	113.73	115.42	110.38	108.72
ONGC	101.70	100.90	103.00	104.30	99.60	97.50
POWERGRID	187.50	186.15	189.30	191.10	184.35	181.20
RELIANCE	1503.80	1495.12	1515.13	1526.47	1483.78	1463.77
SBIN	320.35	320.53	323.82	327.28	317.07	313.78
SUNPHARMA	403.55	406.12	411.63	419.72	398.03	392.52
TATAMOTORS	158.05	158.57	164.08	170.12	152.53	147.02
TATASTEEL	433.20	433.28	438.42	443.63	428.07	422.93
TCS	2196.35	2205.62	2220.73	2245.12	2181.23	2166.12
TECHM	840.90	840.60	845.15	849.40	836.35	831.80
TITAN	1329.60	1324.85	1337.65	1345.70	1316.80	1304.00
ULTRACEMCO	4473.10	4486.03	4517.07	4561.03	4442.07	4411.03
UPL	585.20	586.78	592.27	599.33	579.72	574.23
VEDL	142.65	142.82	144.03	145.42	141.43	140.22
WIPRO	247.60	246.82	249.13	250.67	245.28	242.97
YESBANK	35.30	35.03	36.47	37.63	33.87	32.43
ZEEL	252.25	250.68	256.87	261.48	246.07	239.88

(Source – IRIS)

**Guru Call: From the expert's desk**

Company	Reco Date	Reco Price (Buy on dips)	High till date	Return%
Aditiya Birla Capital	22-Nov-19	95.75	115.35	20.47%
Asian Paints Ltd.	30-Mar-17	1068.1	1862.25	74.35%
Avenue Supermarts Ltd.	31-Jul-17	898.55	2010	123.69%
Axis Bank Ltd.	10-Apr-18	519.3	827.75	59.40%
Bajaj Finance Ltd.	11-Oct-18	2271	4295.75	89.16%
Bajaj Finserv Ltd	1-Nov-16	3416.8	9764.35	185.77%
Bajaj Holdings And Investment Ltd	19-May-16	1499.1	3903.95	160.42%
Bandhan Bank Ltd.	19-Dec-18	556.4	650	16.82%
Bharat Petroleum Corporation Ltd.	23-Oct-19	531.5	549	3.29%
Century Textile and Industries Ltd	25-Nov-16	326	634	94.48%
Cipla Ltd	20-Mar-17	597.3	678.45	13.59%
Colgate Palmolive	16-Sep-19	1314	1642.6	25.01%
Container Corporation	22-Nov-19	577	603	4.51%
Dabur India	22-Oct-19	466	501	7.51%
DLF Ltd	10-Apr-19	194.3	265.9	36.85%
Emami Limited	26-Jun-19	290.35	357.7	23.20%
Godrej Industries Ltd.	12-Feb-18	550.7	657.6	19.41%
Godrej Properties Ltd.	19-Dec-18	685.3	1119.6	63.37%
Grasim Industries Ltd.	31-May-17	1132.5	1331	17.53%
Havells India Ltd.	8-Dec-17	525.75	806.85	53.47%
Housing Development Finance Corp Ltd	19-Dec-17	1720	2499.9	45.34%
HDFC Asset Management Company Ltd.	19-Dec-18	1572.9	3844	144.39%
HDFC Bank Limited	10-Nov-16	639	1305.5	104.30%
HDFC Life Insurance Co Ltd	19-Jan-18	485.05	646.4	33.26%
Hindustan Unilever Ltd.	13-Nov-17	1290.7	2190	69.68%
ICICI Bank Ltd.	6-Apr-18	278.65	552.2	98.17%
ICICI Prudential Life Insurance Company Ltd.	28-Jun-18	375.8	537.3	42.97%
ICICI Lombard General Insurance	19-Sep-19	1154.9	1440.4	24.72%
Infosys Ltd.	17-Aug-17	487.6	847	73.71%
Kansai Nerolac Paints	16-Dec-19	529.85	551	3.99%
Kotak Mahindra Bank Ltd	10-Nov-16	822.1	1734.8	111.02%
Mahindra & Mahindra Ltd.	5-Jun-17	709.25	993	40.01%
Manappuram Finance Ltd.	24-Apr-18	119.2	189	58.56%
Mahanagar Gas	15-Nov-19	1029	1198	16.42%
Marico Ltd.	4-Apr-18	325	404	24.31%
Nestle India Ltd.	27-Sep-18	9729.4	15850	62.91%
Oberoi Realty Ltd.	23-Nov-17	508.6	641.7	26.17%
Phoenix Mills Limited	7-Jul-19	655.15	900	37.37%
Pidilite Industries Limited	4-Oct-16	681.6	1493.5	119.12%
Prestige Estates Projects Limited	6-Jun-19	286.7	426	48.59%
Reliance Nippon	25-Nov-18	377	386.4	2.49%
Rites Ltd.	19-Dec-18	226.96	324.8	43.11%
RBL Bank	22-Nov-19	334	391.2	17.13%
State Bank Of India	28-Aug-18	308	373.8	21.36%
Shipping Corporation	22-Nov-19	64	65.95	3.05%
Tata Chemicals Limited	24-Dec-19	682.8	762	11.60%
Tata Global Beverages Ltd.	29-Jun-17	149.15	399.45	167.82%
Tata Consultancy Services Ltd.	8-Jan-18	1344.6	2296.2	70.77%
Trent Ltd.	19-Dec-18	348.4	611.95	75.65%
Ultratech Cement Ltd.	19-Dec-18	4084.6	4904.95	20.08%
Voltas Ltd.	27-Mar-18	613.9	730.95	19.07%
Whirlpool Of India Ltd.	7-Dec-16	872.25	2510	187.76%
Zee Entertainment	22-Nov-19	345	362	4.93%

**NIFTY 50 STOCKS BELOW 200SMA**

SCRIP NAME	SMA 200	CLOSING (19-02-2020)
WIPRO	258.47	247.60
ZEEL	310.74	252.25
LT	1392.16	1281.40
ITC	254.77	206.70
GRASIM	791.67	757.15
TATAMOTORS	158.23	158.05
CIPLA	490.86	447.50
M&M	573.56	526.40
HINDALCO	195.96	188.10
HEROMOTOCO	2543.12	2251.60
SUNPHARMA	420.84	403.55
IOC	136.62	114.20
ONGC	138.10	101.70
VEDL	152.80	142.65
UPL	592.59	585.20
GAIL	135.79	119.85
EICHERMOT	19573.92	18875.20
INDUSINDBK	1413.56	1142.15
ADANIPTS	386.05	371.30
POWERGRID	196.23	187.50
NTPC	122.39	112.05
YESBANK	75.60	35.30
COALINDIA	211.24	177.75
INFRADEL	251.88	225.10

**Bulk Deals (BSE)**

N/A

**Bulk Deals (NSE)**

Deal Date	Scrip Name	Client Name	Deal Type	Quantity	Price
19-Feb-20	Religare Enterprises Limi	RESONANCE OPPORTUNITIES FUND	BUY	2500000	42.00
19-Feb-20	Religare Enterprises Limi	AXIS BANK LTD	SELL	2900000	42.00

 Note- Executed on 19<sup>th</sup> Feb 2020. Bulk Deal Buy/Sell done by fund house is considered.

**Weekly Expiry Most Active Nifty Call Option**

Symbol	Expiry Date	Strike Price	Highest Open Interest (OI)
NIFTY	20-Feb-20	12200	2527200
NIFTY	20-Feb-20	12150	1911300
NIFTY	20-Feb-20	12100	1645050

**Weekly Expiry Most Active Nifty Put Option**

Symbol	Expiry Date	Strike Price	Highest Open Interest (OI)
NIFTY	20-Feb-20	12100	2523450
NIFTY	20-Feb-20	12000	2422500
NIFTY	20-Feb-20	12050	1686525

**Securities in Ban For Trade Date 20-02-2020**

NCC, YESBANK

**Research Analyst Registration No.**

INH000002764

**Contact**

SMS: 'Arihant' to 56677

**Website**[www.arihantcapital.com](http://www.arihantcapital.com)**mail Id**[arihant.research@arihantcapital.com](mailto:arihant.research@arihantcapital.com)**Arihant is Forbes Asia's '200 Best under a \$Billion' Company  
'Best Emerging Commodities Broker' awarded by UTV Bloomberg**

**Disclaimer:** This document has been prepared by Arihant Capital Markets Limited (hereinafter called as Arihant) and its subsidiaries and associated companies. This document does not constitute an offer or solicitation for the purchase and sale of any financial instrument by Arihant. Receipt and review of this document constitutes your agreement not to circulate, redistribute, retransmit or disclose to others the contents, opinions, conclusion, or information contained herein. This document has been prepared and issued on the basis of publicly available information, internally developed data and other sources believed to be reliable. Whilst meticulous care has been taken to ensure that the facts stated are accurate and opinions given are fair and reasonable, neither the analyst nor any employee of our company is in any way is responsible for its contents and nor is its accuracy or completeness guaranteed. This document is prepared for assistance only and is not intended to be and must not alone be taken as the basis for an investment decision. All recipients of this material should before dealing and or transacting in any of the products referred to in this material make their own investigation, seek appropriate professional advice. The investments discussed in this material may not be suitable for all investors. The recipient alone shall be fully responsible/are liable for any decision taken on the basis of this material. Arihant Capital Markets Ltd (including its affiliates) or its officers, directors, personnel and employees, including persons involved in the preparation or issuance of this material may; (a) from time to time, have positions in, and buy or sell or (b) be engaged in any other transaction and earn brokerage or other compensation in the financial instruments/products discussed herein or act as advisor or lender/borrower in respect of such securities/financial instruments/products or have other potential conflict of interest with respect to any recommendation and related information and opinions. The said persons may have acted upon and/or in a manner contradictory with the information contained here and may have a position or be otherwise interested in the investment referred to in this document before its publication. The user of this report assumes the entire risk of any use made of this data/report. Arihant especially states that it has no financial liability, whatsoever, to the users of this report.

**Arihant Capital Markets Ltd**

#1011 Solitaire Corporate Park Building No.10 1<sup>st</sup> Floor  
Andheri Ghatkopar Link Road Chakala Andheri (E) Mumbai-400093  
T. 022-42254800. Fax: 022-42254880  
[www.arihantcapital.com](http://www.arihantcapital.com)