

To join our research group on TELEGRAM, please click on the links - <https://bit.ly/3Ah8Kcq> and <https://bit.ly/3QTm1Pv>

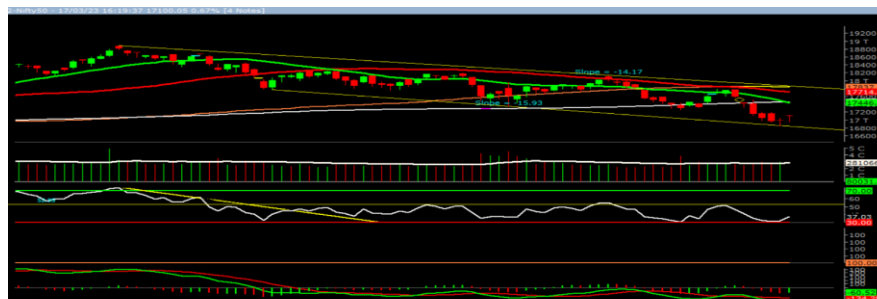
Monday, 20th Mar 2023

Indian Indices	Last Price	(%) Chg
NSE	17100.05	0.67
BSE	57989.90	0.62
World Indices	Last Price	(%) Chg
Dow Jones	31861.98	-1.19
Nasdaq	11630.51	-0.74
Nikkei	27095.00	-0.87
Hang Seng	19129.00	-0.60
FTSE	7335.40	-1.01
Commodity	Last Price	(%) Chg
GOLD(\$/ounce)	1978.75	0.27
Silver (\$/Ounce)	22.46	0.03
Crude (\$/BBL)	66.78	-0.22
Aluminium spot (\$/mt)	2287.00	0.18
Copper SPOT (\$/mt)	8632.00	0.27
Zinc (\$/MT)	2912.50	-0.39
Natural gas \$/MMBtu	2.37	0.85
Currency	Last Price	(%) Chg
USDINR	82.53	-0.10
EURINR	88.05	0.50
Bond		
India 10 Yr Bond yield	7.35	0.03

52 Wk High (A group)			52 Wk Low (A group)		
Company	Close Price	52 Wk High	Company	Close Price	52 Wk Low
GODREJCP	945	957	ADVENZYMES	237.5	236.8
GPPL	113	114.5	APLLTD	478	475
NCC	104	106	BAYERCROP	3986	3959
--	--	--	BIOCON	202	200
--	--	--	CGPOWER	287	285

Source: BSE

Market Technical Outlook



Nifty, opened higher traded with choppiness but in the final hour of the trading session witness upside momentum which led nifty to close in green. On the daily chart, we are observing high wave “Doji” candle which suggests indecisiveness prevailing at current level. We still maintain our stance that 16900 – 16800 is a strong demand zone, hence a bounce from current level cannot be ruled out. In coming trading session if nifty trades above 17150 then it may test 17210 - 17320 levels. On the downside, 16900 – 16800 may act as support for the day.

We still maintain our stance that prices are trading below the rising 200-days SMA (17495). Hence, one needs to adopt cautious approach at current level.

Foreign Institutional Investments (FII's) Activities

Name of Segment	Net Buyer/seller	Rs In Cr
Index Futures	Net Sell	-691.91
Stock Futures	Net Buy	264.38
Net Future Position	Net Sell	-427.53
Index Options	Net Sell	-5290.21
Stock Options	Net Buy	155.11
Net Options Position	Net Sell	-5135.1
FII In cash Segment	Net Sell	-1766.53
DII In cash Segment	Net Buy	1817.14
Net Cash Position	Net Buy	50.61

Guru Call: From the expert's desk

Company	Reco Date	Reco Price (Buy on dips)	High till date	Return%
Adani Power	20-Apr-22	235	345	46.6%
Adani Wilmar Ltd	20-Apr-22	668	878	31.5%
Aditya Birla Capital Ltd	13-Aug-21	124	139	12.5%
Aditya Birla Fashion and Retail Ltd	8-Feb-21	164	322	95.9%
Apcotex Industries Limited	13-Aug-21	343	679	98.0%
Asian Paints Ltd.	30-Mar-17	1068	3590	236.1%
Avenue Supermarts Ltd.	31-Jul-17	899	5900	556.6%
Axis Bank Ltd.	10-Apr-18	519	867	67.0%
Bajaj Finance Ltd	20-Apr-22	7033	7295	3.7%
Bajaj Finserv Ltd	1-Nov-16	3417	19325	465.6%
Bajaj Holdings And Investment Ltd	19-May-16	1499	6598	340.1%
CDSL	17-Sep-20	486	1734	256.9%
Chola finance	25-Sep-20	239	770	222.6%
Chola Holding	23-Sep-20	392	763	94.7%
Cipla Ltd	20-Mar-17	597	1083	81.3%
Colgate Palmolive	16-Sep-19	1314	1823	38.7%
D. P. Abhushan Ltd	20-Apr-22	396	495	25.0%
Dabur India	22-Oct-19	466	659	41.4%
DLF Ltd	10-Apr-19	194	450	131.6%
Dr Reddy	4-Aug-20	4530	5615	24.0%
Emami Limited	26-Jun-19	290	622	114.2%
Finolex Cables Ltd	8-Feb-21	130	268	106.2%
Fortis	14-Jul-20	127	314	147.2%
Godawari Power	20-Apr-22	455	482	6.0%
Godrej Consumer Products Limited	16-Jun-20	634	1138	79.5%
HDFC Asset Management Company Ltd.	19-Dec-18	1573	3844	144.4%
HDFC Bank Limited	10-Nov-16	639	1725	170.0%
HDFC Life Insurance Co Ltd	19-Jan-18	485	776	60.0%
Heritage Foods Ltd	20-Apr-22	330	354	7.2%
Hero Motocorp Ltd	29-Sep-20	3175	3629	14.3%
Hindustan Unilever Ltd.	13-Nov-17	1291	2859	121.5%
Housing Development Finance Corp Ltd	19-Dec-17	1720	3365	95.6%
ICICI Bank Ltd.	6-Apr-18	279	867	211.1%
ICICI Lombard General Insurance	19-Sep-19	1155	1675	45.0%
ICICI Prudential Life Insurance Company Ltd.	28-Jun-18	376	724	92.7%
ICICI Securities Ltd	24-Sep-20	467	896	92.0%
Indusindbnk	8-Jun-20	451	1242	175.4%
Infosys Ltd.	17-Aug-17	488	1954	300.7%
Kotak Mahindra Bank Ltd	10-Nov-16	822	2253	174.1%
Linde India	20-Apr-22	3499	3649	4.3%
Marico Ltd.	4-Apr-18	325	608	87.1%
Maruti Suzuki India Ltd	13-Aug-20	5989	9050	51.1%
Oberoi Realty Ltd.	23-Nov-17	509	1052	106.8%
PEL	2-Sep-20	1246	3015	141.9%
Phoenix Mills Limited	7-Jul-19	655	1200	83.2%
Poonawalla Fincorp Ltd	13-Aug-21	175	344	96.1%
Procter & Gamble Hygiene & Health Care	13-Aug-21	12870	16466	27.9%
Raymond	25-Sep-20	264	1280	385.7%
Reliance	22-Apr-20	1351	2856	111.4%
SBI Life	20-May-20	715	1293	80.8%
Shree Renuka Sugars Limited	13-Aug-21	27	63	135.1%
Spectrum Electrical	18-Apr-22	98	103	5.0%

Guru Call: From the expert's desk

Company	Reco Date	Reco Price (Buy on dips)	High till date	Return%
State Bank of India	3-Feb-21	336	549	63.4%
Sun Pharma	7-Aug-20	525	967	84.2%
Sun TV Network Ltd.	13-Aug-21	525	612	16.5%
Tata Chemicals Limited	24-Dec-19	297	1158	290.0%
Tata Consultancy Services Ltd.	8-Jan-18	1345	4046	200.9%
Tata motors	20-Apr-22	441	450	2.0%
Tata motors dvr	20-Apr-22	220	226	2.6%
Tata Power	20-Apr-22	249	260	4.4%
Trent Ltd.	19-Dec-18	348	1347	286.6%
Ultratech Cement Ltd.	19-Dec-18	4085	8269	102.4%
UTI Asset Management Company Ltd	13-Aug-21	1044	1217	16.6%
Vedanta Ltd	28-Jun-21	261	441	69.1%
Voltas Ltd.	27-Mar-18	614	1357	121.0%
Whirlpool Of India Ltd.	7-Dec-16	872	2550	192.3%
Wipro Limited	13-Aug-21	616	740	20.2%

NIFTY 50 STOCKS BELOW 200SMA

SCRIP NAME	SMA 200	CLOSING (17-03-2023)
INFY	1511.62	1420.7
WIPRO	406.31	376.5
RELIANCE	2507.34	2223.1
HINDUNILVR	2538.06	2447.4
SBIN	545.12	529.8
GRASIM	1614.77	1585.25
TATAMOTORS	426.98	419
CIPLA	1036.14	874.05
TATACONSUM	767.45	706.2
ADANIENT	2977.86	1876.55
M&M	1241.04	1171.5
HINDALCO	418.9	396.7
ICICIBANK	850.88	836.25
HEROMOTOCO	2690.26	2355.15
ASIANPAINT	3058.09	2862.65
UPL	725.72	715.65
EICHERMOT	3251.11	2974.6
INDUSINDBK	1090.78	1020.5
BAJFINANCE	6543.87	5732.35
BHARTIARTL	759.77	757.25
ADANI PORTS	774.22	680.35
DIVISLAB	3442.71	2791.5
TCS	3269.38	3179.3
KOTAKBANK	1818.68	1693.1
MARUTI	8673.11	8316.85
BAJAJFINSV	1485.75	1301.75
NESTLEIND	19084.88	18858.15
SBILIFE	1216.42	1071.6
HDFCLIFE	550.64	471.25
--	--	--
--	--	--
--	--	--
--	--	--
--	--	--

Weekly Expiry Most Active Nifty Call Option

Symbol	Expiry Date	Strike Price	Highest Open Interest (Contracts)
NIFTY	23-Mar-2023	17,800	1,59,409
NIFTY	23-Mar-2023	17,500	1,22,002
NIFTY	23-Mar-2023	17,000	1,10,462

Weekly Expiry Most Active Nifty Put Option

Symbol	Expiry Date	Strike Price	Highest Open Interest (Contracts)
NIFTY	23-Mar-2023	17,000	1,53,307
NIFTY	23-Mar-2023	17,100	68.168
NIFTY	23-Mar-2023	16,000	64,901

Securities in Ban For Trade Date: 20-03-2023

GNFC, IBULHSGFIN

Bulk Deals (BSE)

Deal Date	Scrip Name	Client Name	Deal Type	Quantity	Price
17-Mar-23	CHOICEIN	SCOUTBIT GENERAL TRADING LLC	B	1188417	255.00
17-Mar-23	ELPROINTL	I G E (INDIA) PRIVATE LIMITED	B	2100000	59.14
17-Mar-23	ELPROINTL	YAMINI DABRIWALA	S	1800000	59.00

Bulk Deals (NSE)

Deal Date	Scrip Name	Client Name	Deal Type	Quantity	Price
17-Mar-23	DELHIVERY	VANGUARD TOTAL INTERNATIONAL STOCK INDEX FUND	BUY	4762115	323.07
17-Mar-23	DELHIVERY	VANGUARD EMERGING MARKETS STOCK INDEX FUND A SERIES OF VIEIF	BUY	4798412	323.07
17-Mar-23	EQUITASBNK	VANGUARD TOTAL INTERNATIONAL STOCK INDEX FUND	BUY	5719437	68.01
17-Mar-23	EQUITASBNK	NORGES BANK ON ACCOUNT OF THE GOVERNMENT PENSION FUND GLOBAL	BUY	8770000	67.96
17-Mar-23	JPOWER	VANGUARD TOTAL INTERNATIONAL STOCK INDEX FUND	BUY	36658683	6.08
17-Mar-23	JSL	NORGES BANK ON ACCOUNT OF THE GOVERNMENT PENSION FUND GLOBAL	BUY	2821125	292.51
17-Mar-23	RELINFRA	VANGUARD TOTAL INTERNATIONAL STOCK INDEX FUND	BUY	2012088	148.70
17-Mar-23	ROTO	AEGIS INVESTMENT FUND	BUY	83000	599.85
17-Mar-23	ROTO	AEGIS INVESTMENT FUND PCC	BUY	83000	600.00
17-Mar-23	BIOCON	AHAN - I LTD	SELL	18928363	200.74
17-Mar-23	BLBLIMITED	BRIJ RATTAN BAGRI	SELL	2500000	23.00
17-Mar-23	CALSOFT	SANJAY AGRAWAL	SELL	120900	13.40
17-Mar-23	CMMIPL	KALPALABDHI SECURITIES PRIVATE LTD	SELL	144000	4.91
17-Mar-23	DELHIVERY	INTERNET FUND III PTE. LTD.	SELL	5513758	321.21
17-Mar-23	EQUITASBNK	INTEGRATED CORE STRATEGIES (ASIA) PTE. LTD.	SELL	6639982	67.99
17-Mar-23	FCONSUMER	VISTRA ITCL INDIA LIMITED	SELL	15000000	0.61
17-Mar-23	JSL	INTEGRATED CORE STRATEGIES (ASIA) PTE. LTD.	SELL	3764335	292.04
17-Mar-23	RELINFRA	INTEGRATED CORE STRATEGIES (ASIA) PTE. LTD.	SELL	2012020	148.46

17-Mar-22	VIPIND	THE VANGUARD GROUP INC A/C VANGUARD EMERG. MKTS STOCK	BUY	1276892	633.21
17-Mar-22	VTL	THE VANGUARD GROUP INC A/C VANGUARD EMERG. MKTS STOCK	BUY	462192	2643.51
17-Mar-22	YESBANK	THE VANGUARD GROUP INC A/C VANGUARD EMERG. MKTS STOCK	BUY	369873766	12.99
17-Mar-22	ANGELONE	INTEGRATED CORE STRATEGIES (ASIA) PTE. LTD.	SELL	592297	1615.45
17-Mar-22	BSE	INTEGRATED CORE STRATEGIES (ASIA) PTE. LTD.	SELL	258147	2836.19
17-Mar-22	BSE	BNP PARIBAS ARBITRAGE	SELL	268817	2824.8
17-Mar-22	GNFC	INTEGRATED CORE STRATEGIES (ASIA) PTE. LTD.	SELL	1165505	758.53
17-Mar-22	GRINDWELL	INTEGRATED CORE STRATEGIES (ASIA) PTE. LTD.	SELL	588352	1,835.96
17-Mar-22	MASTEK	INTEGRATED CORE STRATEGIES (ASIA) PTE. LTD.	SELL	151334	3,064.38
17-Mar-22	NIITLTD	INTEGRATED CORE STRATEGIES (ASIA) PTE. LTD.	SELL	715082	473.31
17-Mar-22	SUNDARFIN	THE VANGUARD GROUP INC A/C VANGUARD EMERG. MKTS STOCK	SELL	2278300	1,845.35
17-Mar-22	UTIAMC	INTEGRATED CORE STRATEGIES (ASIA) PTE. LTD.	SELL	1047233	923.06
17-Mar-22	UTTAMSTL	UTTAM EXPORTS PRIVATE LIMITED	SELL	1994522	5.48
17-Mar-22	VESUVIUS	HDFC MUTUAL FUND	SELL	388000	980.15
17-Mar-22	YESBANK	INTEGRATED CORE STRATEGIES (ASIA) PTE. LTD.	SELL	175648290	12.99

Note- Executed on 17th Mar 2023. Bulk Deal Buy/Sell done by fund house is considered.

search Analyst Registration No.

INH000002764

Contact

SMS: 'Arihant' to 56677

Website

www.arihantcapital.com

mail Id

arihant.research@arihantcapital.com

**Arihant is Forbes Asia's '200 Best under a \$Billion' Company
'Best Emerging Commodities Broker' awarded by UTV Bloomberg**

Disclaimer: This document has been prepared by Arihant Capital Markets Limited (hereinafter called as Arihant) and its subsidiaries and associated companies. This document does not constitute an offer or solicitation for the purchase and sale of any financial instrument by Arihant. Receipt and review of this document constitutes your agreement not to circulate, redistribute, retransmit or disclose to others the contents, opinions, conclusion, or information contained herein. This document has been prepared and issued on the basis of publicly available information, internally developed data and other sources believed to be reliable. Whilst meticulous care has been taken to ensure that the facts stated are accurate and opinions given are fair and reasonable, neither the analyst nor any employee of our company is in any way is responsible for its contents and nor is its accuracy or completeness guaranteed. This document is prepared for assistance only and is not intended to be and must not alone be taken as the basis for an investment decision. All recipients of this material should before dealing and or transacting in any of the products referred to in this material make their own investigation, seek appropriate professional advice. The investments discussed in this material may not be suitable for all investors. The recipient alone shall be fully responsible/are liable for any decision taken on the basis of this material. Arihant Capital Markets Ltd (including its affiliates) or its officers, directors, personnel and employees, including persons involved in the preparation or issuance of this material may; (a) from time to time, have positions in, and buy or sell or (b) be engaged in any other transaction and earn brokerage or other compensation in the financial instruments/products discussed herein or act as advisor or lender/borrower in respect of such securities/financial instruments/products or have other potential conflict of interest with respect to any recommendation and related information and opinions. The said persons may have acted upon and/or in a manner contradictory with the information contained here and may have a position or be otherwise interested in the investment referred to in this document before its publication. The user of this report assumes the entire risk of any use made of this data/report. Arihant especially states that it has no financial liability, whatsoever, to the users of this report.

Arihant Capital Markets Ltd

#1011 Solitaire Corporate Park Building No.10 1st Floor
 Andheri Ghatkopar Link Road Chakala Andheri (E) Mumbai-400093
 T. 022-42254800. Fax: 022-42254880
www.arihantcapital.com