

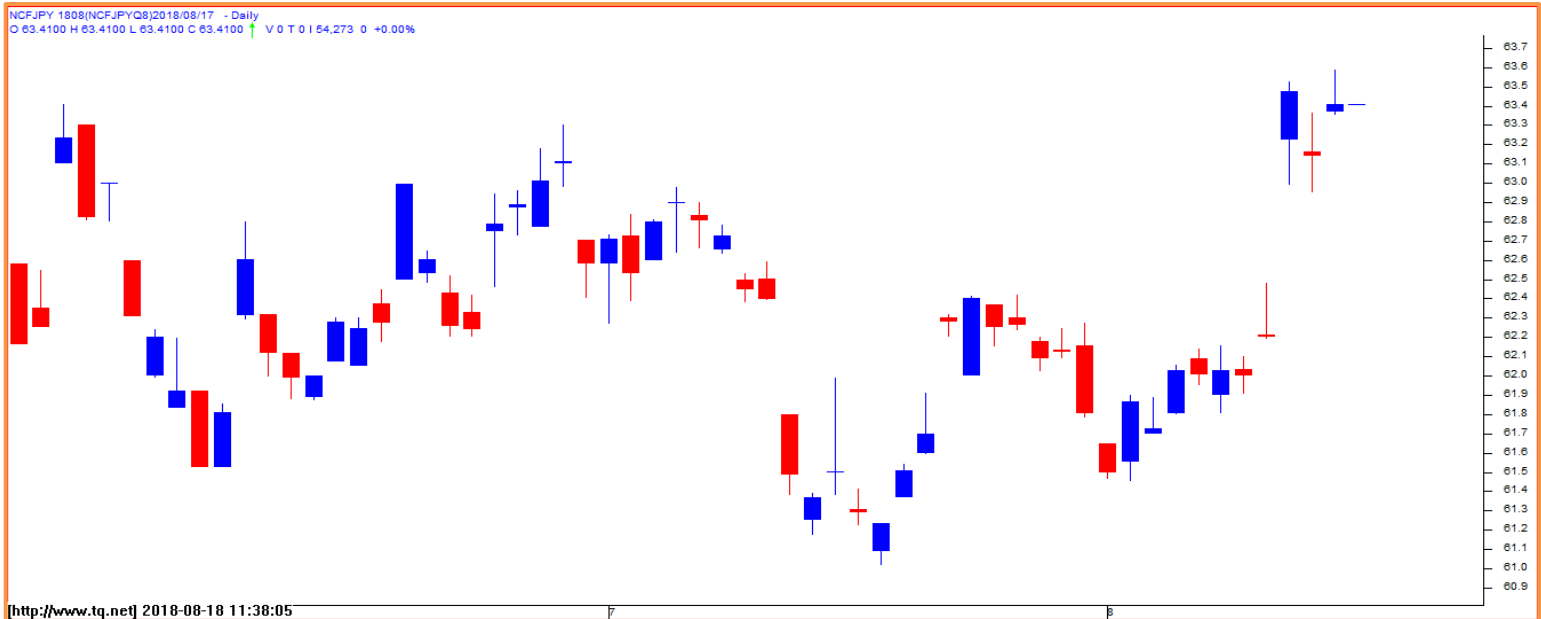
Previous Week Change in CME Market

Currency	Open	High	Low	Close	Pre. Close	% change
Dollar Index	95.2	96.45	94.99	96.27	96.27	+1.11
EUR/USD	1.1384	1.1445	1.1299	1.1437	1.141	+0.0027
GBP/USD	1.2756	1.2827	1.266	1.2754	1.2767	-0.0013
JPY/USD	0.8992	0.9049	0.8964	0.9012	0.8986	+1.11

Weekly Pivot Table

Currency	S2	S1	Pivot	R1	R2
USD-INR	68.28	69.27	69.88	70.87	71.48
EUR-INR	78.51	79.25	79.74	80.48	80.97
GBP-INR	87.40	88.36	89.06	90.02	90.72
JPY –INR	61.66	62.54	63.06	63.94	64.46

Pair of the week- JPY-INR



Trading Strategy

JPY-INR AUGUST: SELL BELOW 63.40 SL ABOVE 64.10 TP-62.20/61.10.

**Technical View-** JPY-INR is forming a shooting star candlestick on daily chart which is pointing towards a short term reversal.

**Major Economic Data & Events Schedule For the Week**
**US Economic Data Schedule**

Date	Time	Economic Indicators	Forecast	Previous	Possible Impact
20-08-18	8:30pm	FOMC Member Bostic Speaks	-	-	Medium
22-08-18	7:30pm	Existing Home Sales	5.44M	5.38M	High
-	11:30pm	FOMC Meeting Minutes	-	-	-
24-08-18	6:00pm	Core Durable Goods Orders m/m	0.5%	0.2%	-
-	7:30pm	Fed Chair Powell Speaks	-	-	-
25-08-18	Day 3	Jackson Hole Symposium	-	-	Medium

**European Economic data Schedule**

Date	Time	Economic Indicators	Forecast	Previous	Possible Impact
20-08-18	9:30pm	German President Weidmann Speaks	-	-	Medium
23-08-18	12:30pm	French Flash Manufacturing PMI	53.5	53.3	Flat
-	1:00pm	German Flash Manufacturing PMI	56.6	56.9	-
-	5:00pm	ECB Monetary Policy Meeting Accounts	-	-	Medium
24-08-18	Day 1	Jackson Hole Symposium	-	-	-

**UK Economic data Schedule**

Date	Time	Economic Indicators	Forecast	Previous	Possible Impact
21-08-18	2:00pm	Public Sector Net Borrowing	-2.1B	4.5B	Medium
23-08-18	Day 1	Jackson Hole Symposium	--	-	-
24-08-18	Day 2	Jackson Hole Symposium	-	-	-
25-08-18	Day 3	Jackson Hole Symposium	-	-	-

**Japanese, Chinese & Indian Economic data Schedule**

Date	Time	Country	Economic Indicators	Forecast	Previous	Possible Impact
22-08-18	10:00am	JPY	All Industries Activity m/m	-0.7%	0.1%	Falt
23-08-18	6:00am	JPY	Flash Manufacturing PMI	52.4	52.3	-
-	6:30pm	CNY	CB Leading Index m/m	-	0.8%	-
24-08-18	5:00am	JPY	National Core CPI y/y	0.9%	0.8%	-
-	5:20am	JPY	SPPI y/y	1.2%	1.2%	-

**Note:** Economic data expectations are based on median forecast by economists or Reuters and Bloomberg survey. Here positive impact indicates currency could appreciate and negative indicates currency could depreciate in comparison with US Dollar.

## Contact

SMS: 'Arihant' to 56677

## Website

[www.arihantcapital.com](http://www.arihantcapital.com)

## Email Id

[research@arihantcapital.com](mailto:research@arihantcapital.com)

**Arihant Is Forbes Asia's '200 Best under a \$Billion' Company  
'Best Emerging Commodities Broker' awarded by UTV Bloomberg**

**Disclaimer:** This document has been prepared by Arihant Capital Markets Limited (hereinafter called as Arihant) and its subsidiaries and associated companies. This document does not constitute an offer or solicitation for the purchase and sale of any financial instrument by Arihant. Receipt and review of this document constitutes your agreement not to circulate, redistribute, retransmit or disclose to others the contents, opinions, conclusion, or information contained herein. This document has been prepared and issued on the basis of publicly available information, internally developed data and other sources believed to be reliable. Whilst meticulous care has been taken to ensure that the facts stated are accurate and opinions given are fair and reasonable, neither the analyst nor any employee of our company is in any way is responsible for its contents and nor is its accuracy or completeness guaranteed. This document is prepared for assistance only and is not intended to be and must not alone be taken as the basis for an investment decision. All recipients of this material should before dealing and or transacting in any of the products referred to in this material make their own investigation, seek appropriate professional advice. The investments discussed in this material may not be suitable for all investors. The recipient alone shall be fully responsible/are liable for any decision taken on the basis of this material. Arihant Capital Markets Ltd (including its affiliates) or its officers, directors, personnel and employees, including persons involved in the preparation or issuance of this material may; (a) from time to time, have positions in, and buy or sell or (b) be engaged in any other transaction and earn brokerage or other compensation in the financial instruments/products discussed herein or act as advisor or lender/borrower in respect of such securities/financial instruments/products or have other potential conflict of interest with respect to any recommendation and related information and opinions. The said persons may have acted upon and/or in a manner contradictory with the information contained here and may have a position or be otherwise interested in the investment referred to in this document before its publication. The user of this report assumes the entire risk of any use made of this data / Report. Arihant especially states that it has no financial liability, whatsoever, to the users of this Report.

---

## Arihant Capital Markets Ltd

Commodity/Currency Research Desk: 6, Lad Colony, Y.N. Road Indore-3  
T: 0731-4217191. Fax: 0731-4217103  
Corporate Office: 1011, Solitaire Corporate Park, Building No.10, 1st Floor,  
AndheriGhatkopar Link Road, Chakala, Andheri (East), Mumbai-400093  
D. +91.22.42254800 and 67114800  
[www.arihantcapital.com](http://www.arihantcapital.com)