

To join our research group on TELEGRAM, please click on the links - <https://bit.ly/3HbUtQV> and <https://bit.ly/2YFpdbn>

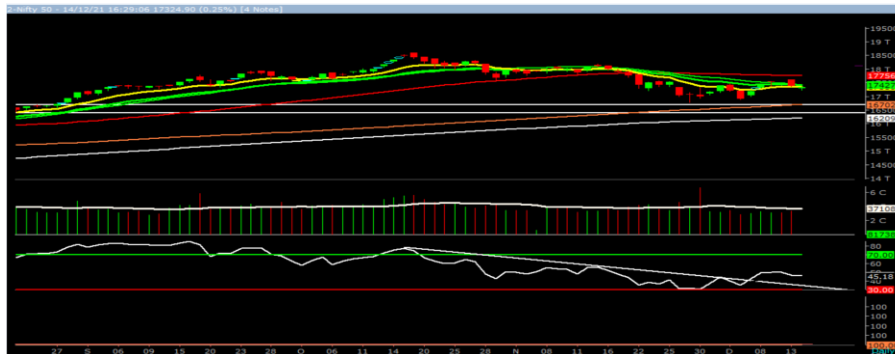
Monday, 20th Dec 2021

Indian Indices	Last Price	(%) Chg
NSE	16985.20	-1.53
BSE	35618.65	-2.54
World Indices	Last Price	(%) Chg
Dow Jones	35365.44	-1.48
Nasdaq	15169.68	-0.07
Nikkei	28055.28	-1.72
Hang Seng	22978.51	-0.92
FTSE	7269.92	0.13
Commodity	Last Price	(%) Chg
GOLD(\$/ounce)	1802.20	-0.15
Silver (\$/Ounce)	22.42	-0.50
Crude (\$/BBL)	71.77	-2.38
Aluminium spot (\$/mt)	2724.25	-0.41
Copper SPOT (\$/mt)	9433.75	-0.20
Lead Spot (\$/MT)	2286.75	-0.82
Natural gas \$/MMBtu	3.71	-1.57
Currency	Last Price	(%) Chg
USD-INR	76.10	-0.11
EUR-INR	86.09	0.05
Bond	Last Price	(%) Chg
India 10 Yr Bond yield	6.41	0.58

52 Wk High (A group)			52 Wk Low (A group)		
Company	Close Price	52 Wk High	Company	Close Price	52 Wk Low
BSOFT	496	521	CUB	140	139
PERSISTNS	4670	4753	MGL	879	870
TECHM	1641	1674	STRIDE	422	416
--	--	--	--	--	--
--	--	--	--	--	--

Source: BSE

Market Technical Outlook



Nifty opened higher but was unable to sustain the opening gains and selling intensified as the day progressed which led nifty to close in red. On the daily chart, we are observing three consecutive narrow range body formations with lower lows. This suggests that undertone has turned negative. In coming trading session if Nifty for first hour trades below 16960 level then it may test 16840 - 16730 levels. On the upside, 17100 - 17230 levels may act as resistance for the day.

Broadly, looking at the current price action it is evident that the prior bottom of 16782 is under threat. Hence one needs to adopt cautious approach at current level.

Foreign Institutional Investments (FII's) Activities

Name of Segment	Net Buyer/seller	Rs In Cr
Index Futures	Net Sell	-470.98
Stock Futures	Net Buy	4.62
Net Future Position	Net Sell	-466.36
Index Options	Net Sell	-5264.08
Stock Options	Net Sell	-505.84
Net Options Position	Net Sell	-5769.92
FII In cash Segment	Net Sell	-2069.90
DII In cash Segment	Net Buy	1478.52
Net Cash Position	Net Sell	-591.38

Guru Call: From the expert's desk

Company	Reco Date	Reco Price (Buy on dips)	High till date	Return%
Accelya Solutions India Ltd	10-Jun-21	1203.90	1539.40	27.87%
Aditya Birla Capital Ltd	13-Aug-21	206.60	210.95	2.11%
Aditya Birla Fashion and Retail Ltd	08-Feb-21	164.40	231.65	40.91%
Alkem	08-Jul-20	2427.00	3558.90	46.64%
Apcotex Industries Limited	13-Aug-21	342.90	350.05	2.09%
Asian Paints Ltd.	30-Mar-17	1068.10	3179.50	197.68%
Astec LifeSciences Limited	09-Jul-21	1360.70	1487.00	9.28%
Avenue Supermarts Ltd.	31-Jul-17	898.55	3448.95	283.84%
Axis Bank Ltd.	10-Apr-18	519.30	827.75	59.40%
Bajaj Finserv Ltd	1-Nov-16	3416.80	13110.00	283.69%
Bajaj Holdings And Investment Ltd	19-May-16	1499.10	4060.00	170.83%
Birla Corporation Limited	28-Jun-21	1240.00	1450.80	17.00%
Britannia	12-June-20	3366.00	4010.00	19.13%
Cadila	03-Apr-20	274.00	673.70	145.88%
CAMS	08-Oct-20	1334.90	3740.65	180.22%
CDSL	17-Sep-20	485.90	1579.00	224.96%
Century Textile and Industries Ltd	25-Nov-16	750.40	1471.20	96.06%
CESC Ltd	08-Jun-21	758.20	870.90	14.86%
CG Power and Industrial Solutions Ltd	10-Feb-21	45.25	91.95	103.20%
Chola finance	25-Sep-20	238.70	600.95	151.76%
Chola Holding	23-Sep-20	391.80	711.00	81.47%
Cipla Ltd	20-Mar-17	597.30	997.00	66.92%
Colgate Palmolive	16-Sep-19	1314.00	1794.85	36.59%
Dabur India	22-Oct-19	466.00	605.00	29.83%
DFM Foods Ltd	03-Feb-21	409.05	453.80	10.94%
DLF Ltd	10-Apr-19	194.30	338.80	74.37%
Dr Reddy	04-Aug-20	4530.00	5614.60	23.94%
Emami Limited	26-Jun-19	290.35	578.50	99.24%
Finolex Cables Ltd	08-Feb-21	368.80	557.70	51.22%
Firstsource Solutions Ltd	13-Aug-21	201.10	209.35	4.10%
Fortis	14-Jul-20	127.00	253.90	99.92%
Gati Ltd	13-Aug-21	148.90	154.20	3.56%
Gillette India Limited	11-Jun-21	5847.00	6249.00	6.88%
Glaxosmithkline Pharmaceuticals Ltd	27-Aug-20	1455.75	1807.50	24.16%
Godrej Consumer Products Limited	16-Jun-20	634.00	980.70	54.68%
HDFC Asset Management Company Ltd.	19-Dec-18	1572.90	3844.00	144.39%
HDFC Bank Limited	10-Nov-16	639.00	1641.00	156.81%
HDFC Life Insurance Co Ltd	19-Jan-18	485.05	746.00	53.80%
Hero Motocorp Ltd	29-Sep-20	3174.95	3629.05	14.30%
Hindustan Unilever Ltd.	13-Nov-17	1290.70	2614.30	102.55%
Housing Development Finance Corp Ltd	19-Dec-17	1720.00	2896.00	68.37%
ICICI Bank Ltd.	06-Apr-18	278.65	679.40	143.82%
ICICI Lombard General Insurance	19-Sep-19	1154.90	1626.45	40.83%
ICICI Prudential Life Insurance Company Ltd.	28-Jun-18	375.80	660.20	75.68%
ICICI Securities Ltd	24-Sep-20	466.65	802.00	71.86%
Indusindbnk	08-Jun-20	451.00	1119.50	148.23%
Infosys Ltd.	17-Aug-17	487.60	1596.85	227.49%
INOX Leisure Ltd	13-Aug-21	327.80	332.70	1.49%
Ion Exchange (India) Ltd	01-June-21	1464.95	2947.00	101.17%
Jubilant Ingrevia Ltd	22-Jul-21	623.00	640.00	2.73%
Kotak Mahindra Bank Ltd	10-Nov-16	822.10	2049.00	149.24%
L&T Finance Holdings Ltd	03-Dec-20	84.05	113.40	34.92%

NIFTY 50 STOCKS BELOW 200SMA

SCRIP NAME	SMA 200	CLOSING (17-12-2021)
HINDUNILVR	2442.06	2309.5
TATASTEEL	1163.54	1153.2
DRREDDY	4899.13	4597.35
CIPLA	910.86	881
TATACONSUM	747.34	740.25
BPCL	443.15	391.05
HDFCBANK	1516.78	1500.1
HEROMOTOCO	2860.07	2471.1
BRITANNIA	3646.92	3560.6
AXISBANK	739.59	709.65
SHREECEM	28110.4	26366.05
EICHERMOT	2626.12	2471.15
INDUSINDBK	1018.07	928.3
BAJAJ-AUTO	3810.3	3253.15
COALINDIA	151.1	149.75
HDFCLIFE	693.83	669.5
--	--	--

Weekly Expiry Most Active Nifty Call Option

Symbol	Expiry Date	Strike Price	Highest Open Interest (Contracts)
NIFTY	23-Dec-2021	17300	1,13,639
NIFTY	23-Dec-2021	17500	1,05,494
NIFTY	23-Dec-2021	17200	91,072

Weekly Expiry Most Active Nifty Put Option

Symbol	Expiry Date	Strike Price	Highest Open Interest (Contracts)
NIFTY	23-Dec-2021	17000	74,446
NIFTY	23-Dec-2021	16500	54,968
NIFTY	23-Dec-2021	16000	49,495

Securities in Ban For Trade Date 20-12-2021

ESCORTS, IBULHSFGFIN, IDEA.

IPO Listing Today

Company Name: Shriram Properties BSE Code: 543419, NSE Symbol: SHRIRAMPPS, Issue Price: Rs 118 per share, Series: EQ

Bulk Deals (NSE)

Deal Date	Scrip Name	Client Name	Deal Type	Quantity	Price
17-Dec-21	APARINDS	HDFC MUTUAL FUND	BUY	200000	748.80
17-Dec-21	APARINDS	HDFC MUTUAL FUND	BUY	500000	750.00
17-Dec-21	KALPATPOWR	MUNOT MOFATRAJ PUKHRAJ	BUY	3650000	370.00
17-Dec-21	RATEGAIN	GOLDMAN SACHS FUNDS - GOLDMAN SACHS INDIA EQUITY PORTFOLIO	BUY	719727	361.71
17-Dec-21	APARINDS	HDFC MUTUAL FUND	SELL	673639	750.00
17-Dec-21	KALPATPOWR	KALPATARU PROPERTIES PRIVATE LIMITED	SELL	3650000	370.00
17-Dec-21	RATEGAIN	EDELWEISS MUTUAL FUND	SELL	682110	360.70
17-Dec-21	RATEGAIN	INTEGRATED CORE STRATEGIES ASIA PTE LTD	SELL	878838	356.22

Bulk Deals (BSE)

Deal Date	Scrip Name	Client Name	Deal Type	Quantity	Price
17-Dec-21	INFRATRUST	IIFL WEALTH PRIME LIMITED	B	14800000	101.00

Note- Executed on 17th Dec 2021. Bulk Deal Buy/Sell done by fund house is considered

Research Analyst Registration No.

INH000002764

Contact

SMS: 'Arihant' to 56677

Website
www.arihantcapital.com
mail Id
arihant.research@arihantcapital.com

**Arihant is Forbes Asia's '200 Best under a \$Billion' Company
'Best Emerging Commodities Broker' awarded by UTV Bloomberg**

Disclaimer: This document has been prepared by Arihant Capital Markets Limited (hereinafter called as Arihant) and its subsidiaries and associated companies. This document does not constitute an offer or solicitation for the purchase and sale of any financial instrument by Arihant. Receipt and review of this document constitutes your agreement not to circulate, redistribute, retransmit or disclose to others the contents, opinions, conclusion, or information contained herein. This document has been prepared and issued on the basis of publicly available information, internally developed data and other sources believed to be reliable. Whilst meticulous care has been taken to ensure that the facts stated are accurate and opinions given are fair and reasonable, neither the analyst nor any employee of our company is in any way is responsible for its contents and nor is its accuracy or completeness guaranteed. This document is prepared for assistance only and is not intended to be and must not alone be taken as the basis for an investment decision. All recipients of this material should before dealing and or transacting in any of the products referred to in this material make their own investigation, seek appropriate professional advice. The investments discussed in this material may not be suitable for all investors. The recipient alone shall be fully responsible/are liable for any decision taken on the basis of this material. Arihant Capital Markets Ltd (including its affiliates) or its officers, directors, personnel and employees, including persons involved in the preparation or issuance of this material may; (a) from time to time, have positions in, and buy or sell or (b) be engaged in any other transaction and earn brokerage or other compensation in the financial instruments/products discussed herein or act as advisor or lender/borrower in respect of such securities/financial instruments/products or have other potential conflict of interest with respect to any recommendation and related information and opinions. The said persons may have acted upon and/or in a manner contradictory with the information contained here and may have a position or be otherwise interested in the investment referred to in this document before its publication. The user of this report assumes the entire risk of any use made of this data/report. Arihant especially states that it has no financial liability, whatsoever, to the users of this report.

Arihant Capital Markets Ltd

#1011 Solitaire Corporate Park Building No.10 1st Floor
 Andheri Ghatkopar Link Road Chakala Andheri (E) Mumbai-400093
 T. 022-42254800. Fax: 022-42254880
www.arihantcapital.com