

To join our research group on TELEGRAM, please click on the links - <https://bit.ly/2CkisAK> and <https://bit.ly/3fKXKHK>

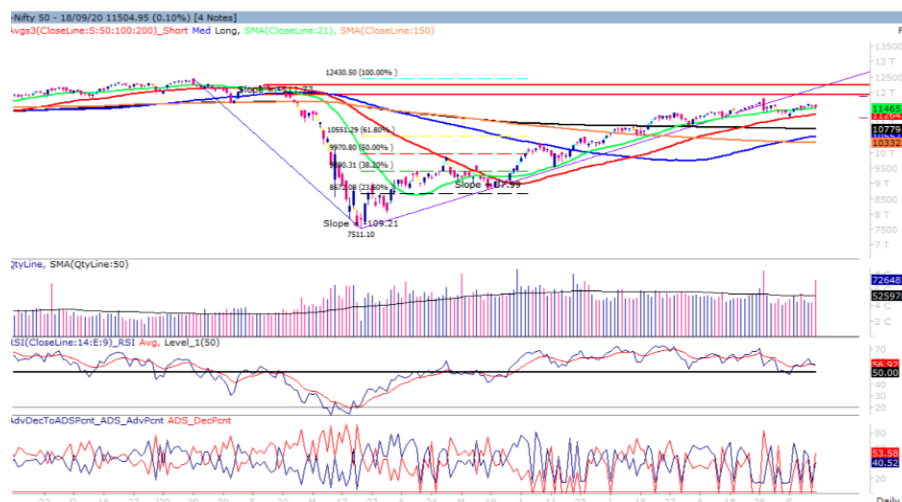
Monday, 21st Sep, 2020

Indian Indices	Last Price	(%) Chg
NSE	11504.95	-0.10
BSE	38845.82	-0.34
World Indices	Last Price	(%) Chg
Dow Jones	27657.42	-0.88
Nasdaq	10793.28	-1.07
Nikkei	--	--
Hang Seng	24270.53	-0.76
FTSE	6007.05	-0.71
Commodity	Last Price	(%) Chg
GOLD(\$/ounce)	1960.60	-0.08
Silver (\$/Ounce)	27.09	-0.14
Crude (\$/BBL)	43.25	0.23
Aluminium spot (\$/mt)	1795.25	0.01
Copper SPOT (\$/mt)	6852.50	0.00
Lead Spot (\$/MT)	1909.75	-0.16
Natural gas \$/MMBtu	2.02	-1.17
Currency	Last Price	(%) Chg
USD-INR	73.47	-0.32
EUR-INR	87.04	0.08
Bond	Last Price	(%) Chg
India 10 Yr Bond yield	6.01	-0.31

52 Wk High (A group)			52 Wk Low (A group)		
Company	Close Price	52 Wk High	Company	Close Price	52 Wk Low
ADV ENZ	250	254	--	--	--
APOLLHSP	1822	1871	--	--	--
BIOCON	453	463	--	--	--
BIRLASOFT	195	206	--	--	--
CADILA	409	422	--	--	--

Source: BSE

Market Technical Outlook



Nifty opened higher but witnessed selling pressure in the latter half of the session which led the indices to close marginally in red. On a daily chart, we are observing narrow range body formations which suggests that markets are circumspect at current level. However, prices are still above the 21-days SMA. In coming trading session if prices trade above 11590 then it may test 11650 – 11700 levels. On the downside, 11400 – 11300 levels may act as support for the day.

We continue to maintain our stance that the 50-day SMA 11172 remains a make or break level as long as Nifty holds the mentioned level there is high probability that Nifty may test 11700 – 11800 levels in couple of days. We maintain our stance that stock specific activity is likely to continue.

Foreign Institutional Investments (FII's) Activities

Name of Segment	Net Buyer/seller	Rs In Cr
Index Futures	Net Sell	1900.03
Stock Futures	Net Sell	-1449.19
Net Future Position	Net Buy	450.84
Index Options	Net Buy	1122.33
Stock Options	Net Sell	-44.95
Net Options Position	Net Buy	1077.38
FII In cash Segment	Net Buy	205.15
DII In cash Segment	Net Sell	-100.83
Net Cash Position	Net Buy	104.32

Guru Call: From the expert's desk

Company	Reco Date	Reco Price (Buy on dips)	High till date	Return%
Aditya Birla Capital	22-Nov-19	95.75	115.35	20.47%
Ajanta Pharma	04-Aug-20	1661.05	1717	3.26%
Akzo Nobel	13-Jul-20	1853	1895	2.22%
Alkem	08-Jul-20	2427	2583	6.04%
Asian Paints Ltd.	30-Mar-17	1068.10	1916.70	79.45%
Avenue Supermarts Ltd.	31-Jul-17	898.55	2560.00	184.90%
Axis Bank Ltd.	10-Apr-18	519.30	827.75	59.40%
Bajaj Finance Ltd.	11-Oct-18	2271.00	4923.40	116.79%
Bajaj Finserv Ltd	1-Nov-16	3416.80	9950.00	191.21%
Bajaj Holdings And Investment Ltd	19-May-16	1499.10	3950.00	163.49%
Bajaj-Auto	12-Jun-20	2782.00	3149.00	11.65%
Bandhan Bank Ltd.	19-Dec-18	556.40	650.00	16.82%
BEL	13-Aug-20	110.00	115.00	8.69%
Bharat Petroleum Corporation Ltd.	23-Oct-19	531.50	549.00	3.29%
Bhartiartel	04-May-20	532.00	612.00	13.07%
Biocon	17-Sep-20	440.05	453.90	3.30%
Britannia	12-June-20	3366.00	4010.00	16.05%
Cadila	03-Apr-20	274.00	384.00	28.65%
CDSL	17-Sep-20	485.90	494.40	1.75%
Century Textile and Industries Ltd	25-Nov-16	326.00	656.90	101.50%
Cipla Ltd	20-Mar-17	597.30	678.45	13.59%
Colgate Palmolive	16-Sep-19	1314.00	1642.60	25.01%
Crompto Greaves Consumer	11-Jun-20	225.00	254.00	11.42%
Dabur India	22-Oct-19	466.00	525.00	12.66%
Divislab	04-Aug-20	2641.00	2716.60	2.78%
DLF Ltd	10-Apr-19	194.30	265.90	36.85%
Dr Reddy	04-Aug-20	4530.00	4664.90	2.89%
Emami Limited	26-Jun-19	290.35	357.70	23.20%
Fine Organic	17-Sep-20	3145.00	3260.00	3.65%
Fortis	14-Jul-20	127.00	139.00	8.63%
Galaxy Surface	01-Jul-20	1557.00	1665.00	6.49%
Goderj CP	16-Jun-20	634.00	721.00	12.07%
Godrej Industries Ltd.	12-Feb-18	550.70	657.60	19.41%
Hatsun AgroProd.	17-Sep-20	841.45	878	4.34%
HDFC Asset Management Company Ltd.	19-Dec-18	1572.90	3844.00	144.39%
HDFC Bank Limited	10-Nov-16	639.00	1305.50	104.30%
HDFC Life Insurance Co Ltd	19-Jan-18	485.05	646.40	33.26%
Hindustan Unilever Ltd.	13-Nov-17	1290.70	2308.20	78.83%
Housing Development Finance Corp Ltd	19-Dec-17	1720.00	2499.90	45.34%
ICICI Bank Ltd.	6-Apr-18	278.65	552.20	98.17%
ICICI Lombard General Insurance	19-Sep-19	1154.90	1440.40	24.72%
ICICI Prudential Life Insurance Company Ltd.	28-Jun-18	375.80	537.30	42.97%
Indusindbnk	08-Jun-20	451.00	577.00	21.84%
Infosys Ltd.	17-Aug-17	487.60	847.00	73.71%
Ipca Lab	11-Aug-20	2099.00	2156.00	2.66%
ITI	17-Sep-20	131.45	133.50	1.55%
Jk Cement	19-Jun-20	1378.00	1568.00	12.12%
JK Lakshmi Cement	03-Jul-20	276.00	305.00	9.1%
Jyoti lab	05-Aug-20	132.90	143.90	7.64%
Kansai Nerolac Paints	16-Dec-19	529.85	551.00	3.99%
Kotak Mahindra Bank Ltd	10-Nov-16	822.10	1740.00	111.65%
Mahanagar Gas	15-Nov-19	1029.00	1246.20	21.11%

Guru Call: From the expert's desk

Company	Reco Date	Reco Price (Buy on dips)	High till date	Return%
Mahindra & Mahindra Ltd.	5-Jun-17	709.25	993.00	40.01%
Manappuram Finance Ltd.	24-Apr-18	119.20	194.80	63.42%
Marico Ltd.	4-Apr-18	325.00	404.00	24.31%
Nam-India	25-Nov-18	377.00	452.90	20.13%
Nestle India Ltd.	27-Sep-18	9729.40	16835.15	73.03%
NMDC	05-Aug-20	84.90	88.05	3.58%
Oberoi Realty Ltd.	23-Nov-17	508.60	641.70	26.17%
Pfizer	22-Jul-20	4150.00	4450.00	6.74%
Phoenix Mills Limited	7-Jul-19	655.15	979.00	49.43%
PI Industries	17-Sep-20	2012.10	2070	2.87%
Pidilite Industries Limited	4-Oct-16	681.60	1661.00	143.69%
Reliance	22-Apr-20	1351.00	2198.00	38.54%
Rites Ltd.	19-Dec-18	226.96	331.00	45.84%
SBI Card	16-Jul-20	719.00	798.00	9.90%
SBI Life	20-May-20	715.00	895.00	20.11%
Sun Pharma	07-Aug-20	525.00	550.00	9.09%
Tata Chemicals Limited	24-Dec-19	296.89	339.70	14.42%
Tata Consultancy Services Ltd.	8-Jan-18	1344.60	2296.20	70.77%
Tata Consumer	29-Jun-17	149.15	408.00	173.55%
Torent Pharma	04-Aug-20	2727.95	2881.50	5.33%
Trent Ltd.	19-Dec-18	348.40	794.00	127.90%
Ultratech Cement Ltd.	19-Dec-18	4084.60	4904.95	20.08%
Voltas Ltd.	27-Mar-18	613.90	741.00	20.70%
Whirlpool Of India Ltd.	7-Dec-16	872.25	2555.00	192.92%
Zee Entertainment	22-Nov-19	345.00	362.00	4.93%

NIFTY 50 STOCKS BELOW 200SMA

SCRIP NAME	SMA 200	CLOSING (17-09-2020)
LT	1036.44	900.7
ITC	198.89	179.1
HINDUNILVR	2128.33	2098.7
SBIN	233.06	192.6
HDFC	1963.54	1724
ICICIBANK	413.64	369.55
HDFCBANK	1083.68	1057.3
IOC	96.15	80.7
AXISBANK	528.36	443.35
ONGC	89.78	74.3
GAIL	101.97	92.1
SHREECEM	21156.36	19520.95
INDUSINDBK	778.63	613.2
BHARTIARTL	516.22	494.55
POWERGRID	175.92	171.9
KOTAKBANK	1427.03	1277.1
NTPC	99.33	90.55
BAJAJFINSV	6914.57	5888.45
NESTLEIND	16104.52	16087.05
COALINDIA	153.67	123.65
INFRADEL	211.32	199.35
--	--	--
--	--	--

Weekly Expiry Most Active Nifty Call Option

Symbol	Expiry Date	Strike Price	Highest Open Interest (OI)
NIFTY	24-Sep-2020	12000	4,402,500
NIFTY	24-Sep-2020	11600	3,489,525
NIFTY	24-Sep-2020	11800	3,323,025

Weekly Expiry Most Active Nifty Put Option

Symbol	Expiry Date	Strike Price	Highest Open Interest (OI)
NIFTY	24-Sep-2020	11500	3,704,250
NIFTY	24-Sep-2020	11000	3,406,350
NIFTY	24-Sep-2020	10500	3,267,600

Securities in Ban For Trade Date 21-09-2020

ADANIENT,BHEL,CANBK,GLENMARK,IDEA,JINDALSTEL,L&TFH,SAIL,TATACHEM,VEDL

IPO Listing Today

Company Name: Route Mobile Limited, BSE Code: 543228, NSE Symbol: ROUTE, Issue Price: Rs 350 per share, Series: EQ

Bulk Deals (BSE)

Deal Date	Scrip Name	Client Name	Deal Type	Quantity	Price
18-Sep-20	ESSELPRO	EPSILON BIDCO PTE LTD	S	18000000	256.44
18-Sep-20	ESSELPRO	INTEGRATED CORE STRATEGIES (ASIA) PTE.LTD.	B	2039100	256.30
18-Sep-20	ESSELPRO	EPSILON BIDCO PTE LTD	S	54580090	256.49
18-Sep-20	ESSELPRO	AXIS MUTUAL FUND	B	2341006	256.30
18-Sep-20	ESSELPRO	AXIS MUTUAL FUND	B	5331667	256.30
18-Sep-20	ESSELPRO	AXIS MUTUAL FUND	B	2,341,006	256.30
18-Sep-20	ESSELPRO	IDFC MUTUAL FUND	B	2,731,174	256.30
18-Sep-20	ESSELPRO	ADITYA BIRLA SUN LIFE MUTUAL FUND	B	2,331,643	256.30
18-Sep-20	ESSELPRO	ADITYA BIRLA SUN LIFE MUTUAL FUND	B	1,785,017	256.30
18-Sep-20	ESSELPRO	ADITYA BIRLA SUN LIFE MUTUAL FUND	B	1,735,857	256.30
18-Sep-20	ESSELPRO	TNTBC AS THE TRUSTEE OF NOMURA INDIA STOCK MOTHER FUND	B	2891964	256.30
18-Sep-20	ESSELPRO	FRANKLIN TEMPLETON MUTUAL FUND	B	2996395	256.30
18-Sep-20	ESSELPRO	FTIF - TEMPLETON ASIAN SMALLER COMPANIES FUND	B	2079350	256.3
18-Sep-20	ESSELPRO	NORGES BANK ON ACCOUNT OF THE GOVERNMENT PENSION FUND GLOBAL	B	3750000	256.3
18-Sep-20	ESSELPRO	DSP MUTUAL FUND	B	1872913	256.3
18-Sep-20	ESSELPRO	DSP MUTUAL FUND	B	2230484	256.3
18-Sep-20	ESSELPRO	EMERGING MARKETS EQUITY FUND	B	3951968	256.3
18-Sep-20	ESSELPRO	NEUBERGER BERMAN EQUITY FUNDS A/C	B	2716697	256.3
18-Sep-20	KPITTECH	ANUPAMA KISHOR PATIL	B	1400000	100.01
18-Sep-20	VALIANTORG	GOLDMAN SACHS INDIA FUND LIMITED	B	106502	2749
18-Sep-20	VALIANTORG	NIPPON INDIA MUTUAL FUND	B	200000	2749.02
18-Sep-20	VALIANTORG	NIPPON INDIA MUTUAL FUND	B	90000	2749.02

Bulk Deals (NSE)

Deal Date	Scrip Name	Client Name	Deal Type	Quantity	Price
18-Sep-20	ADANIGREEN	THE VANGUARD GROUP INC A/C VANGUARD EMERG. MKTS STOCK INDEXFD A SERIES OF V I E I F	BUY	13084019	666.96
18-Sep-20	AMBER	THE VANGUARD GROUP INC A/C VANGUARD EMERG. MKTS STOCK INDEXFD A SERIES OF V I E I F	BUY	246949	2,042.81
18-Sep-20	ATUL	THE VANGUARD GROUP INC A/C VANGUARD EMERG. MKTS STOCK INDEXFD A SERIES OF V I E I F	BUY	287366	6,664.02
18-Sep-20	DEEPAKNTR	THE VANGUARD GROUP INC A/C VANGUARD EMERG. MKTS STOCK INDEXFD A SERIES OF V I E I F	BUY	1081688	861.54
18-Sep-20	DIXON	THE VANGUARD GROUP INC A/C VANGUARD EMERG. MKTS STOCK INDEXFD A SERIES OF V I E I F	BUY	90797	9,421.52
18-Sep-20	GATI	EQ INDIA FUND	BUY	888888	49.45
18-Sep-20	GRANULES	THE VANGUARD GROUP INC A/C VANGUARD EMERG. MKTS STOCK INDEXFD A SERIES OF V I E I F	BUY	2609758	370.42
18-Sep-20	IGL	THE VANGUARD GROUP INC A/C VANGUARD EMERG. MKTS STOCK INDEXFD A SERIES OF V I E I F	BUY	5419615	420.03
18-Sep-20	INFIBEAM	THE VANGUARD GROUP INC A/C VANGUARD EMERG. MKTS STOCK INDEXFD A SERIES OF V I E I F	BUY	3716086	77.09
18-Sep-20	JBCHEPHARM	THE VANGUARD GROUP INC A/C VANGUARD EMERG. MKTS STOCK INDEXFD A SERIES OF V I E I F	BUY	706756	1,121.89
18-Sep-20	MANAPPURAM	THE VANGUARD GROUP INC A/C VANGUARD EMERG. MKTS STOCK INDEXFD A SERIES OF V I E I F	BUY	5736216	161.52
18-Sep-20	NAVINFLUOR	THE VANGUARD GROUP INC A/C VANGUARD EMERG. MKTS STOCK INDEXFD A SERIES OF V I E I F	BUY	343451	2,048.79
18-Sep-20	TATAELXSI	THE VANGUARD GROUP INC A/C VANGUARD EMERG. MKTS STOCK INDEXFD A SERIES OF V I E I F	BUY	346065	1,277.32
18-Sep-20	TRENT	THE VANGUARD GROUP INC A/C VANGUARD EMERG. MKTS STOCK INDEXFD A SERIES OF V I E I F	BUY	2413964	683.04
18-Sep-20	AMBER	INTEGRATED CORE STRATEGIES (ASIA) PTE. LTD.	SELL	183459	2034.02
18-Sep-20	APLAPOLLO	INTEGRATED CORE STRATEGIES ASIA PTE LTD	SELL	159642	2704.67
18-Sep-20	ATUL	INTEGRATED CORE STRATEGIES (ASIA) PTE. LTD.	SELL	180829	6601.04
18-Sep-20	BLUESTARCO	INTEGRATED CORE STRATEGIES ASIA PTE LTD	SELL	517661	632.77
18-Sep-20	DEEPAKNTR	INTEGRATED CORE STRATEGIES ASIA PTE LTD	SELL	824457	853.75
18-Sep-20	DISHTV	THE VANGUARD GROUP INC A/C VANGUARD EMERG. MKTS STOCK INDEXFD A SERIES OF V I E I F	SELL	11667063	14.68
18-Sep-20	DIXON	INTEGRATED CORE STRATEGIES (ASIA) PTE. LTD.	SELL	77005	9408.56
18-Sep-20	GRANULES	INTEGRATED CORE STRATEGIES (ASIA) PTE. LTD.	SELL	1507444	365.06
18-Sep-20	IGL	THE VANGUARD GROUP INC A/C VANGUARD EMERG. MKTS STOCK INDEXFD A SERIES OF V I E I F	SELL	371167	419.25
18-Sep-20	INFIBEAM	INTEGRATED CORE STRATEGIES (ASIA) PTE. LTD.	SELL	3652143	77.06
18-Sep-20	NAVINFLUOR	INTEGRATED CORE STRATEGIES ASIA PTE LTD	SELL	382711	2047.75
18-Sep-20	TATAELXSI	INTEGRATED CORE STRATEGIES ASIA PTE LTD	SELL	357262	1273.07
18-Sep-20	TRENT	INTEGRATED CORE STRATEGIES (ASIA) PTE. LTD.	SELL	2328680	682.76
18-Sep-20	WABAG	THE VANGUARD GROUP INC A/C VANGUARD EMERG. MKTS STOCK INDEXFD A SERIES OF V I E I F	SELL	357454	212.39

Note- Executed on 18th Sep 2020. Bulk Deal Buy/Sell done by fund house is considered.

Research Analyst Registration No.	Contact	Website	mail Id
INH000002764	SMS: 'Arihant' to 56677	www.arihantcapital.com	arihant.research@arihantcapital.com

**Arihant is Forbes Asia's '200 Best under a \$Billion' Company
'Best Emerging Commodities Broker' awarded by UTV Bloomberg**

Disclaimer: This document has been prepared by Arihant Capital Markets Limited (hereinafter called as Arihant) and its subsidiaries and associated companies. This document does not constitute an offer or solicitation for the purchase and sale of any financial instrument by Arihant. Receipt and review of this document constitutes your agreement not to circulate, redistribute, retransmit or disclose to others the contents, opinions, conclusion, or information contained herein. This document has been prepared and issued on the basis of publicly available information, internally developed data and other sources believed to be reliable. Whilst meticulous care has been taken to ensure that the facts stated are accurate and opinions given are fair and reasonable, neither the analyst nor any employee of our company is in any way is responsible for its contents and nor is its accuracy or completeness guaranteed. This document is prepared for assistance only and is not intended to be and must not alone be taken as the basis for an investment decision. All recipients of this material should before dealing and or transacting in any of the products referred to in this material make their own investigation, seek appropriate professional advice. The investments discussed in this material may not be suitable for all investors. The recipient alone shall be fully responsible/are liable for any decision taken on the basis of this material. Arihant Capital Markets Ltd (including its affiliates) or its officers, directors, personnel and employees, including persons involved in the preparation or issuance of this material may; (a) from time to time, have positions in, and buy or sell or (b) be engaged in any other transaction and earn brokerage or other compensation in the financial instruments/products discussed herein or act as advisor or lender/borrower in respect of such securities/financial instruments/products or have other potential conflict of interest with respect to any recommendation and related information and opinions. The said persons may have acted upon and/or in a manner contradictory with the information contained here and may have a position or be otherwise interested in the investment referred to in this document before its publication. The user of this report assumes the entire risk of any use made of this data/report. Arihant especially states that it has no financial liability, whatsoever, to the users of this report.

Arihant Capital Markets Ltd

#1011 Solitaire Corporate Park Building No.10 1st Floor
 Andheri Ghatkopar Link Road Chakala Andheri (E) Mumbai-400093
 T. 022-42254800. Fax: 022-42254880
www.arihantcapital.com