

To join our research group on TELEGRAM, please click on the links - <https://bit.ly/3s9WdS5> and <https://bit.ly/3duO119>

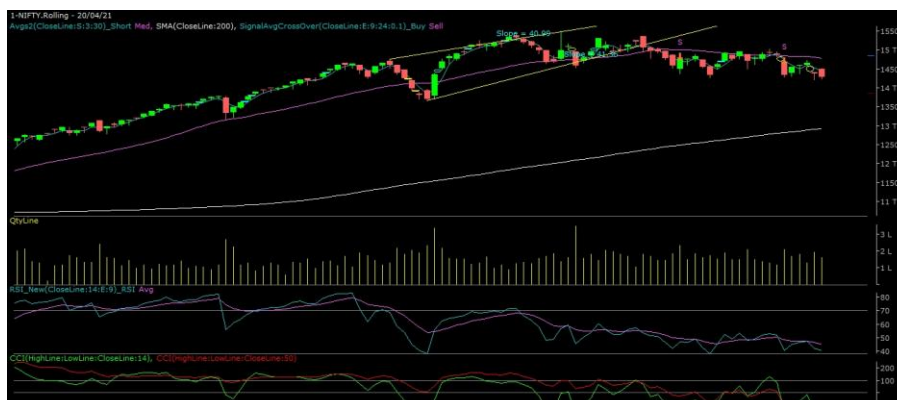
Tuesday, 22th April, 2021

Indian Indices	Last Price	(%) Chg
NSE	14296.40	-0.44
BSE	47705.80	-0.51
World Indices		
Dow Jones	34137.31	0.93
Nasdaq	13950.22	1.19
Nikkei	29099.93	2.07
Hang Seng	28717.07	0.31
FTSE	6895.29	0.52
Commodity	Last Price	(%) Chg
GOLD(\$/ounce)	1794.10	0.07
Silver (\$/Ounce)	26.57	-0.02
Crude (\$/BBL)	65.13	-0.29
Aluminium spot (\$/mt)	2365.25	0.03
Copper SPOT (\$/mt)	2815.50	0.02
Lead Spot (\$/MT)	2029.50	-0.23
Natural gas \$/MMBtu	2.70	0.33
Currency		
USD-INR	74.43	0.01
EUR-INR	90.79	0.03
Bond	Last Price	(%) Chg
India 10 Yr Bond yield	6.07	-0.12

52 Wk High (A group)			52 Wk Low (A group)		
Company	Close Price	52 Wk High	Company	Close Price	52 Wk Low
APOLOHSP	3272	3308	--	--	--
CADILAH	556	568	--	--	--
CIPLA	949	966	--	--	--
GLENMARK	571	589	--	--	--
JINDSTEL	431	436	--	--	--

Source: BSE

Market Technical Outlook



Nifty, opened gap up but fail to sustain morning gain closed in red. On the daily chart we are observing Nifty trading below mostly all short term moving averages and below lower trend line which suggests that the selling from higher levels will remain continue. In coming trading session 14250-14200 will be major support level if we trade below then we can see more selling pressure up to 14050-13950. On the upside unless we did not trade or close above 14500 level we will not maintain upper level, only above that we can move 14620-14700.

At present prices are trading below the 50-day SMA (14836) and the daily trend has turned down. Since the trend remains down rallies are likely to attract selling pressure. Hence, one can adopt cautious approach toward the market.

Foreign Institutional Investments (FII's) Activities

Name of Segment	Net Buyer/seller	Rs In Cr
Index Futures	Net Buy	307.22
Stock Futures	Net Sell	-442.01
Net Future Position	Net Sell	-134.79
Index Options	Net Sell	-2477.34
Stock Options	Net Buy	18.50
Net Options Position	Net Sell	-2458.84
FII In cash Segment	Net Sell	-1082.33
DII In cash Segment	Net Buy	1323.01
Net Cash Position	Net Buy	240.68

Guru Call: From the expert's desk

Company	Reco Date	Reco Price (Buy on dips)	High till date	Return%
Aarti drugs	21-Aug-20	783.00	1026.95	31.16%
Aditya Birla Fashion and Retail Ltd	08-Feb-21	164.40	172.25	4.77%
Aegis Logistics	11-Sep-20	204.05	318.95	56.31%
Ajanta Pharma	04-Aug-20	1661.05	1878.00	13.06%
Alkem	08-Jul-20	2427.00	3551.50	46.33%
Asian Paints Ltd.	30-Mar-17	1068.10	2873.45	169.02%
Avenue Supermarts Ltd.	31-Jul-17	898.55	3242.00	260.80%
Axis Bank Ltd.	10-Apr-18	519.30	827.75	59.40%
Bajaj Consumer Care Ltd	03-Feb-21	255.80	284.00	11.02%
Bajaj Finance Ltd.	11-Oct-18	2271.00	5822.20	156.37%
Bajaj Finserv Ltd	1-Nov-16	3416.80	10579.00	209.62%
Bajaj Holdings And Investment Ltd	19-May-16	1499.10	3950.00	163.49%
Bajaj-Auto	12-Jun-20	2782.00	4361.40	56.77%
Bandhan Bank Ltd.	19-Dec-18	556.40	650.00	16.82%
Berger Paints India Ltd	07-Dec-20	672.20	822.95	22.43%
Bharti Airtel Limited	03-Dec-20	479.90	623.00	29.82%
Britannia	12-June-20	3366.00	4010.00	19.13%
Cadila	03-Apr-20	274.00	509.20	85.84%
CAMS	08-Oct-20	1334.90	2023.30	51.57%
CDSL	17-Sep-20	485.90	592.90	22.02%
Ceat Limited	28-Jan-21	1541.05	1763.00	14.40%
Century Textile and Industries Ltd	25-Nov-16	326.00	656.90	101.50%
CG Power and Industrial Solutions Ltd	10-Feb-21	45.25	54.70	20.88%
Chola finance	25-Sep-20	238.70	550.75	130.73%
Chola Holding	23-Sep-20	391.80	607.00	54.93%
Cipla Ltd	20-Mar-17	597.30	878.90	47.15%
Colgate Palmolive	16-Sep-19	1314.00	1676.00	27.55%
Crompton Greaves Consumer	11-Jun-20	225.00	456.00	102.67%
Dabur India	22-Oct-19	466.00	552.55	18.57%
DFM Foods Ltd	03-Feb-21	409.05	429.60	5.02%
Divislab	04-Aug-20	2641.00	3914.95	48.24%
DLF Ltd	10-Apr-19	194.30	328.20	68.91%
Dr Reddy	04-Aug-20	4530.00	5512.65	21.69%
Emami Limited	26-Jun-19	290.35	519.95	79.08%
Finolex Cables Ltd	08-Feb-21	368.80	410.00	11.17%
Fortis	14-Jul-20	127.00	182.10	43.39%
Galaxy Surface	01-Jul-20	1557.00	2380.90	52.92%
Glaxosmithkline Pharmaceuticals Ltd	27-Aug-20	1455.75	1807.50	24.16%
Godrej Consumer Products Limited	16-Jun-20	634.00	808.35	27.50%
Godrej Industries Ltd.	12-Feb-18	550.70	657.60	19.41%
Godrej Properties Ltd	04-Dec-20	1200.30	1546.00	28.80%
HDFC Asset Management Company Ltd.	19-Dec-18	1572.90	3844.00	144.39%
HDFC Bank Limited	10-Nov-16	639.00	1641.00	156.81%
HDFC Life Insurance Co Ltd	19-Jan-18	485.05	731.00	50.71%
Hero Motocorp Ltd	29-Sep-20	3174.95	3629.05	14.30%
Hindustan Unilever Ltd.	13-Nov-17	1290.70	2614.30	102.55%
Housing Development Finance Corp Ltd	19-Dec-17	1720.00	2896.00	68.37%
ICICI Bank Ltd.	06-Apr-18	278.65	679.40	143.82%
ICICI Lombard General Insurance	19-Sep-19	1154.90	1626.45	40.83%
ICICI Prudential Life Insurance Company Ltd.	28-Jun-18	375.80	537.90	43.13%
ICICI Securities Ltd	24-Sep-20	466.65	498.80	6.89%

Guru Call: From the expert's desk

Company	Reco Date	Reco Price (Buy on dips)	High till date	Return%
Indusindbnk	08-Jun-20	451.00	1096.50	143.13%
Infosys Ltd.	17-Aug-17	487.60	1392.80	185.64%
Ipca Lab	11-Aug-20	2099.00	2460.00	17.20%
Jk Cement	19-Jun-20	1378.00	2915.00	111.54%
JK Lakshmi Cement	03-Jul-20	276.00	390.00	41.30%
Justdial	07-Oct-20	385.60	766.00	98.65%
Jyoti lab	05-Aug-20	132.90	166.00	24.91%
Kansai Nerolac Paints	16-Dec-19	529.85	680.00	28.34%
Kotak Mahindra Bank Ltd	10-Nov-16	822.10	2049.00	149.24%
L&T Finance Holdings Ltd	03-Dec-20	84.05	105.20	25.16%
LIC Housing Finance Limited	06-Jan-21	408.30	487.40	19.37%
Mahanagar Gas	15-Nov-19	1029.00	1246.20	21.11%
Mahindra & Mahindra Fin. Services Ltd.	08-Dec-20	175.25	224.30	27.99%
Mahindra & Mahindra Ltd.	05-Jun-17	709.25	993.00	40.01%
Manappuram Finance Ltd.	24-Apr-18	119.20	194.80	63.42%
Marico Ltd.	04-Apr-18	325.00	433.95	33.52%
Maruti Suzuki India Ltd	13-Aug-20	5988.85	8329.00	39.08%
Nam-India	25-Nov-18	377.00	452.90	20.13%
Nestle India Ltd.	27-Sep-18	9729.40	18844.00	93.68%
Oberoi Realty Ltd.	23-Nov-17	508.60	641.70	26.17%
PEL	02-Sep-20	1246.25	1931.95	55.02%
Pfizer	22-Jul-20	4150.00	5900.00	42.17%
Phoenix Mills Limited	07-Jul-19	655.15	979.00	49.43%
Pidilite Industries Limited	04-Oct-16	681.60	1842.00	170.25%
Polycab India Ltd	06-Jan-21	1176.10	1364.00	15.98%
Raymond	25-Sep-20	263.55	382.65	45.19%
RBL Bank	25-Sep-20	164.95	274.30	66.29%
Reliance	22-Apr-20	1351.00	2369.35	75.38%
Rites Ltd.	19-Dec-18	226.96	331.00	45.84%
SBI Card	16-Jul-20	719.00	1095.25	52.33%
SBI Life	20-May-20	715.00	954.50	33.50%
State Bank of India	03-Feb-21	335.95	427.70	27.31%
Sun Pharma	07-Aug-20	525.00	654.40	24.65%
Suprajit Engineering Ltd.	08-Feb-21	244.30	285.05	16.68%
Syngene	24-Sep-20	565.70	644.55	13.94%
Tata Chemicals Limited	24-Dec-19	296.89	638.90	115.20%
Tata Consultancy Services Ltd.	08-Jan-18	1344.60	3339.80	148.39%
Tata Consumer	29-Jun-17	149.15	645.70	332.92%
Trent Ltd.	19-Dec-18	348.40	844.90	142.51%
Ultratech Cement Ltd.	19-Dec-18	4084.60	6589.00	61.31%
Voltas Ltd.	27-Mar-18	613.90	1132.00	84.39%
Whirlpool Of India Ltd.	07-Dec-16	872.25	2787.00	219.52%
Zee Entertainment	22-Nov-19	345.00	362.00	4.93%

NIFTY 50 STOCKS BELOW 200SMA

SCRIP NAME	SMA 200	CLOSING (20-04-2021)
RELIANCE	2035.03	1901.15
HEROMOTOCO	3062.38	2815
IOC	88.99	88
EICHERMOT	2386.93	2340
MARUTI	7020.06	6646.65
--	--	--
--	--	--
--	--	--

PCG PORTFOLIO

Company	Reco Date	Reco Price (Buy on dips)	High till date	Return%
Ajanta Pharma Ltd.	16-Sep-20	1526.10	1655.80	8.50%
Alkem Laboratories Ltd.	16-Sep-20	2823.80	2987.90	5.81%
Biocon Ltd.	16-Sep-20	438.65	478.00	8.97%
Cipla Ltd.	16-Sep-20	752.60	829.00	10.15%
Fine Organic Industries Ltd.	16-Sep-20	3070.95	3095.95	0.81%
Hatsun Agro Products Ltd.	16-Sep-20	840.15	868.00	3.31%
P I Industries Ltd.	16-Sep-20	2052.80	2080.00	1.33%
Reliance Industries Ltd.	16-Sep-20	2324.55	2336.00	0.49%
Infosys Ltd.	18-Sep-20	1002.15	1154.30	15.18%
Central Depository Services (India) Ltd	23-Sep-20	479.60	506.00	5.50%
Larsen & Toubro Infotech Ltd	23-Sep-20	2448.45	3512.70	43.47%
Divi's Laboratories Ltd	28-Sep-20	3097.15	3269.90	5.58%
Poly Medicure Ltd	28-Sep-20	458.10	508.80	11.07%
Coromandel International Ltd	29-Sep-20	793.25	801.90	1.09%
Coforge Ltd	01-Oct-20	2335.80	2760.00	18.16%
Tata Consultancy Services Ltd	05-Oct-20	2705.80	2885.00	6.62%
--	--	--	--	--
--	--	--	--	--
--	--	--	--	--
--	--	--	--	--

Weekly Expiry Most Active Nifty Call Option

Symbol	Expiry Date	Strike Price	Highest Open Interest (Contracts)
NIFTY	22-APR-2021	15000	54,085
NIFTY	22-APR-2021	14500	51,536
NIFTY	22-APR-2021	14700	47,121

Weekly Expiry Most Active Nifty Put Option

Symbol	Expiry Date	Strike Price	Highest Open Interest (Contracts)
NIFTY	22-APR-2021	14000	43,082
NIFTY	22-APR-2021	14300	34,750
NIFTY	22-APR-2021	13500	33,494

Securities in Ban For Trade Date 22-04-2021

SAIL, SUNTV

Bulk Deals (NSE)

Deal Date	Scrip Name	Client Name	Deal Type	Quantity	Price
20-Apr-21	KDDL-RE	JUPITER INDIA FUND	SELL	18758	350.46
20-Apr-21	KDDL-RE	ELEVATION CAPITAL V FII HOLDINGS LIMITED	SELL	8791	360.21

Bulk Deals (BSE)

N/A

 Note- Executed on 20th Apr 2021. Bulk Deal Buy/Sell done by fund house is considered

Research Analyst Registration No.

INH000002764

Contact

SMS: 'Arihant' to 56677

Websitewww.arihantcapital.com**mail Id**arihant.research@arihantcapital.com**Arihant is Forbes Asia's '200 Best under a \$Billion' Company
'Best Emerging Commodities Broker' awarded by UTV Bloomberg**

Disclaimer: This document has been prepared by Arihant Capital Markets Limited (hereinafter called as Arihant) and its subsidiaries and associated companies. This document does not constitute an offer or solicitation for the purchase and sale of any financial instrument by Arihant. Receipt and review of this document constitutes your agreement not to circulate, redistribute, retransmit or disclose to others the contents, opinions, conclusion, or information contained herein. This document has been prepared and issued on the basis of publicly available information, internally developed data and other sources believed to be reliable. Whilst meticulous care has been taken to ensure that the facts stated are accurate and opinions given are fair and reasonable, neither the analyst nor any employee of our company is in any way is responsible for its contents and nor is its accuracy or completeness guaranteed. This document is prepared for assistance only and is not intended to be and must not alone be taken as the basis for an investment decision. All recipients of this material should before dealing and or transacting in any of the products referred to in this material make their own investigation, seek appropriate professional advice. The investments discussed in this material may not be suitable for all investors. The recipient alone shall be fully responsible/are liable for any decision taken on the basis of this material. Arihant Capital Markets Ltd (including its affiliates) or its officers, directors, personnel and employees, including persons involved in the preparation or issuance of this material may; (a) from time to time, have positions in, and buy or sell or (b) be engaged in any other transaction and earn brokerage or other compensation in the financial instruments/products discussed herein or act as advisor or lender/borrower in respect of such securities/financial instruments/products or have other potential conflict of interest with respect to any recommendation and related information and opinions. The said persons may have acted upon and/or in a manner contradictory with the information contained here and may have a position or be otherwise interested in the investment referred to in this document before its publication. The user of this report assumes the entire risk of any use made of this data/report. Arihant especially states that it has no financial liability, whatsoever, to the users of this report.

Arihant Capital Markets Ltd

#1011 Solitaire Corporate Park Building No.10 1st Floor
Andheri Ghatkopar Link Road Chakala Andheri (E) Mumbai-400093
T. 022-42254800. Fax: 022-42254880
www.arihantcapital.com