

To join our research group on TELEGRAM, please click on the links - <https://bit.ly/2CkisAK> and <https://bit.ly/3fKXKHK>

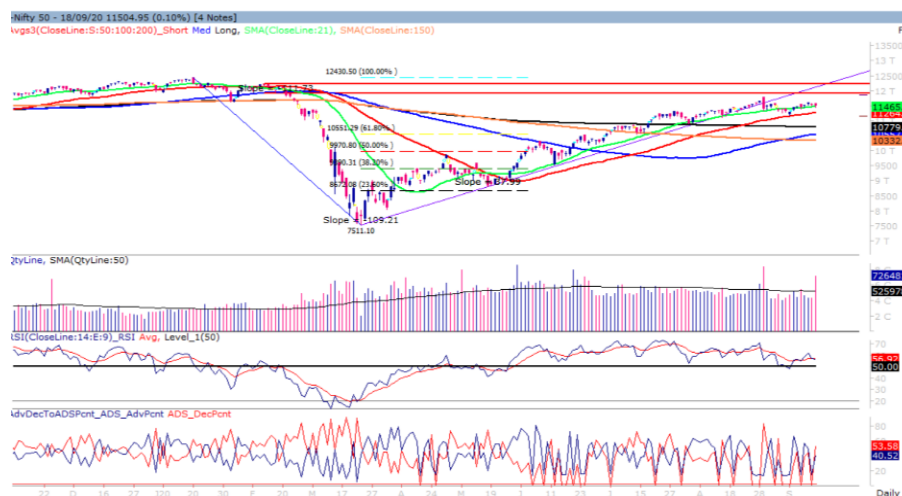
Tuesday, 22th Sep, 2020

Indian Indices	Last Price	(%) Chg
NSE	11222.20	-2.46
BSE	38034.14	-2.09
World Indices	Last Price	(%) Chg
Dow Jones	27147.70	-1.84
Nasdaq	10778.80	-0.13
Nikkei	--	--
Hang Seng	23779.88	-0.71
FTSE	5804.29	-3.38
Commodity	Last Price	(%) Chg
GOLD(\$/ounce)	1913.40	0.15
Silver (\$/Ounce)	24.70	1.26
Crude (\$/BBL)	41.54	0.24
Aluminium spot (\$/mt)	1786.00	0.27
Copper SPOT (\$/mt)	6740.00	0.85
Lead Spot (\$/MT)	1898.75	0.12
Natural gas \$/MMBtu	1.86	1.20
Currency	Last Price	(%) Chg
USD-INR	73.56	0.11
EUR-INR	86.75	-0.31
Bond	Last Price	(%) Chg
India 10 Yr Bond yield	6.01	0.03

52 Wk High (A group)			52 Wk Low (A group)		
Company	Close Price	52 Wk High	Company	Close Price	52 Wk Low
ADV ENZ	234	257	--	--	--
APOLLHSP	1825	1899	--	--	--
BALKRISND	1303	1431	--	--	--
DR REDDY	5139	5514	--	--	--
HCLTECH	802	849	--	--	--

Source: BSE

Market Technical Outlook



Nifty opened on a flat note, initially traded sideways but witnessed selling pressure in the second half of the session which dragged nifty to close deep in red. On a daily chart, we are observing strong bear candle which has marginally closed below 50-days SMA (11273). However, the volumes were not higher than the previous session. In coming trading session if prices trade below 11218 then it may test 11150 – 11050 levels. On the upside 11350 – 11450 levels may act as resistance for the day. **Broadly, we are of the opinion that if Nifty closes below 11272 level for two consecutive days with higher volumes then it is possible that the current uptrend may reverse. Hence, one needs to adopt cautious approach at current level..**

Foreign Institutional Investments (FII's) Activities

Name of Segment	Net Buyer/seller	Rs In Cr
Index Futures	Net Buy	431.66
Stock Futures	Net Sell	-330.37
Net Future Position	Net Buy	101.29
Index Options	Net Sell	-788.20
Stock Options	Net Buy	242.77
Net Options Position	Net Sell	545.43
FII In cash Segment	Net Sell	-539.81
DII In cash Segment	Net Sell	-517.95
Net Cash Position	Net Sell	1057.67

Guru Call: From the expert's desk

Company	Reco Date	Reco Price (Buy on dips)	High till date	Return%
Aditiya Birla Capital	22-Nov-19	95.75	115.35	20.47%
Ajanta Pharma	04-Aug-20	1661.05	1717	3.26%
Akzo Nobel	13-Jul-20	1853	1895	2.22%
Alkem	08-Jul-20	2427	2583	6.04%
Asian Paints Ltd.	30-Mar-17	1068.10	1916.70	79.45%
Avenue Supermarts Ltd.	31-Jul-17	898.55	2560.00	184.90%
Axis Bank Ltd.	10-Apr-18	519.30	827.75	59.40%
Bajaj Finance Ltd.	11-Oct-18	2271.00	4923.40	116.79%
Bajaj Finserv Ltd	1-Nov-16	3416.80	9950.00	191.21%
Bajaj Holdings And Investment Ltd	19-May-16	1499.10	3950.00	163.49%
Bajaj-Auto	12-Jun-20	2782.00	3149.00	11.65%
Bandhan Bank Ltd.	19-Dec-18	556.40	650.00	16.82%
BEL	13-Aug-20	110.00	115.00	8.69%
Bharat Petroleum Corporation Ltd.	23-Oct-19	531.50	549.00	3.29%
Bhartiartel	04-May-20	532.00	612.00	13.07%
Biocon	17-Sep-20	440.05	453.90	3.30%
Britannia	12-June-20	3366.00	4010.00	16.05%
Cadila	03-Apr-20	274.00	384.00	28.65%
CDSL	17-Sep-20	485.90	494.40	1.75%
Century Textile and Industries Ltd	25-Nov-16	326.00	656.90	101.50%
Cipla Ltd	20-Mar-17	597.30	678.45	13.59%
Colgate Palmolive	16-Sep-19	1314.00	1642.60	25.01%
Crompto Greaves Consumer	11-Jun-20	225.00	254.00	11.42%
Dabur India	22-Oct-19	466.00	525.00	12.66%
Divislab	04-Aug-20	2641.00	2716.60	2.78%
DLF Ltd	10-Apr-19	194.30	265.90	36.85%
Dr Reddy	04-Aug-20	4530.00	4664.90	2.89%
Emami Limited	26-Jun-19	290.35	357.70	23.20%
Fine Organic	17-Sep-20	3145.00	3260.00	3.65%
Fortis	14-Jul-20	127.00	139.00	8.63%
Galaxy Surface	01-Jul-20	1557.00	1665.00	6.49%
Goderj CP	16-Jun-20	634.00	721.00	12.07%
Godrej Industries Ltd.	12-Feb-18	550.70	657.60	19.41%
Hatsun AgroProd.	17-Sep-20	841.45	878	4.34%
HDFC Asset Management Company Ltd.	19-Dec-18	1572.90	3844.00	144.39%
HDFC Bank Limited	10-Nov-16	639.00	1305.50	104.30%
HDFC Life Insurance Co Ltd	19-Jan-18	485.05	646.40	33.26%
Hindustan Unilever Ltd.	13-Nov-17	1290.70	2308.20	78.83%
Housing Development Finance Corp Ltd	19-Dec-17	1720.00	2499.90	45.34%
ICICI Bank Ltd.	6-Apr-18	278.65	552.20	98.17%
ICICI Lombard General Insurance	19-Sep-19	1154.90	1440.40	24.72%
ICICI Prudential Life Insurance Company Ltd.	28-Jun-18	375.80	537.30	42.97%
Indusindbnk	08-Jun-20	451.00	577.00	21.84%
Infosys Ltd.	17-Aug-17	487.60	847.00	73.71%
Ipca Lab	11-Aug-20	2099.00	2156.00	2.66%
ITI	17-Sep-20	131.45	133.50	1.55%
Jk Cement	19-Jun-20	1378.00	1568.00	12.12%
JK Lakshmi Cement	03-Jul-20	276.00	305.00	9.1%
Jyoti lab	05-Aug-20	132.90	143.90	7.64%
Kansai Nerolac Paints	16-Dec-19	529.85	551.00	3.99%
Kotak Mahindra Bank Ltd	10-Nov-16	822.10	1740.00	111.65%
Mahanagar Gas	15-Nov-19	1029.00	1246.20	21.11%

Guru Call: From the expert's desk

Company	Reco Date	Reco Price (Buy on dips)	High till date	Return%
Mahindra & Mahindra Ltd.	5-Jun-17	709.25	993.00	40.01%
Manappuram Finance Ltd.	24-Apr-18	119.20	194.80	63.42%
Marico Ltd.	4-Apr-18	325.00	404.00	24.31%
Nam-India	25-Nov-18	377.00	452.90	20.13%
Nestle India Ltd.	27-Sep-18	9729.40	16835.15	73.03%
NMDC	05-Aug-20	84.90	88.05	3.58%
Oberoi Realty Ltd.	23-Nov-17	508.60	641.70	26.17%
Pfizer	22-Jul-20	4150.00	4450.00	6.74%
Phoenix Mills Limited	7-Jul-19	655.15	979.00	49.43%
PI Industries	17-Sep-20	2012.10	2070	2.87%
Pidilite Industries Limited	4-Oct-16	681.60	1661.00	143.69%
Reliance	22-Apr-20	1351.00	2198.00	38.54%
Rites Ltd.	19-Dec-18	226.96	331.00	45.84%
SBI Card	16-Jul-20	719.00	798.00	9.90%
SBI Life	20-May-20	715.00	895.00	20.11%
Sun Pharma	07-Aug-20	525.00	550.00	9.09%
Tata Chemicals Limited	24-Dec-19	296.89	339.70	14.42%
Tata Consultancy Services Ltd.	8-Jan-18	1344.60	2296.20	70.77%
Tata Consumer	29-Jun-17	149.15	408.00	173.55%
Torent Pharma	04-Aug-20	2727.95	2881.50	5.33%
Trent Ltd.	19-Dec-18	348.40	794.00	127.90%
Ultratech Cement Ltd.	19-Dec-18	4084.60	4904.95	20.08%
Voltas Ltd.	27-Mar-18	613.90	741.00	20.70%
Whirlpool Of India Ltd.	7-Dec-16	872.25	2555.00	192.92%
Zee Entertainment	22-Nov-19	345.00	362.00	4.93%

NIFTY 50 STOCKS BELOW 200SMA

SCRIP NAME	SMA 200	CLOSING (21-09-2020)
LT	1034.43	881.85
ITC	198.55	175.75
HINDUNILVR	2128.28	2037.8
SBIN	232.28	185.8
HDFC	1960.47	1708.15
BPCL	405.8	401.45
ICICIBANK	412.75	350.7
HDFCBANK	1082.67	1049.3
IOC	95.9	77.7
AXISBANK	526.77	423.35
ONGC	89.48	71.15
GAIL	101.8	88.2
SHREECEM	21148.69	18903.7
INDUSINDBK	773.71	560.6
BAJFINANCE	3339.85	3330.15
BHARTIARTL	516.25	467.75
POWERGRID	175.84	170.5
ULTRACEMCO	3922	3878.9
KOTAKBANK	1425.21	1287.85
NTPC	99.2	88.3
BAJAJFINSV	6897.98	5712.25
NESTLEIND	16110.14	15430.75
COALINDIA	153.27	121.65

Weekly Expiry Most Active Nifty Call Option

Symbol	Expiry Date	Strike Price	Highest Open Interest (OI)
NIFTY	24-Sep-2020	11500	5,722,575
NIFTY	24-Sep-2020	11600	5,054,850
NIFTY	24-Sep-2020	12000	3,898,350

Weekly Expiry Most Active Nifty Put Option

Symbol	Expiry Date	Strike Price	Highest Open Interest (OI)
NIFTY	24-Sep-2020	11000	3,360,300
NIFTY	24-Sep-2020	10500	3,245,700
NIFTY	24-Sep-2020	11300	2,532,300

Securities in Ban For Trade Date 22-09-2020

GLENMARK,IDEA,SAIL,VEDL

Bulk Deals (BSE)

N/A

Bulk Deals (NSE)

Deal Date	Scrip Name	Client Name	Deal Type	Quantity	Price
21-Sep-20	DEEPAKNTR	THE VANGUARD GROUP INC A/C VANGUARD EMERG. MKTS STOCK INDEXFD A SERIES OF V I E I F	BUY	1202981	839.18
21-Sep-20	IBULHSGFIN	INDIABULLS HOUSING FINANCE LIMITED-EMPLOYEES WELFARE TRUST	BUY	2700000	156.95
21-Sep-20	ROUTE	GOLDMAN SACHS TRUST EMERGING MARKETS EQUITY FUND	BUY	800908	705.95
21-Sep-20	ROUTE	GS FDS SICAV GS GLOBAL EMGMKTS EQ PORTFOLIO	BUY	1133423	705.95
21-Sep-20	ROUTE	KUWAIT INVESTMENT AUTHORITY A/C KUWAIT INVESTMENT AUTH FD 225	BUY	578504	697.25
21-Sep-20	ROUTE	GOLDMAN SACHS INDIA FUND LIMITED	BUY	475012	705.95
21-Sep-20	TATAMTRDVR	THE VANGUARD GROUP INC A/C VANGUARD EMERG. MKTS STOCK INDEXFD A SERIES OF V I E I F	BUY	3041977	63.37

 Note- Executed on 21th Sep 2020. Bulk Deal Buy/Sell done by fund house is considered.

Research Analyst Registration No.	Contact	Website	mail Id
INH000002764	SMS: 'Arihant' to 56677	www.arihantcapital.com	arihant.research@arihantcapital.com

**Arihant is Forbes Asia's '200 Best under a \$Billion' Company
'Best Emerging Commodities Broker' awarded by UTV Bloomberg**

Disclaimer: This document has been prepared by Arihant Capital Markets Limited (hereinafter called as Arihant) and its subsidiaries and associated companies. This document does not constitute an offer or solicitation for the purchase and sale of any financial instrument by Arihant. Receipt and review of this document constitutes your agreement not to circulate, redistribute, retransmit or disclose to others the contents, opinions, conclusion, or information contained herein. This document has been prepared and issued on the basis of publicly available information, internally developed data and other sources believed to be reliable. Whilst meticulous care has been taken to ensure that the facts stated are accurate and opinions given are fair and reasonable, neither the analyst nor any employee of our company is in any way is responsible for its contents and nor is its accuracy or completeness guaranteed. This document is prepared for assistance only and is not intended to be and must not alone be taken as the basis for an investment decision. All recipients of this material should before dealing and or transacting in any of the products referred to in this material make their own investigation, seek appropriate professional advice. The investments discussed in this material may not be suitable for all investors. The recipient alone shall be fully responsible/are liable for any decision taken on the basis of this material. Arihant Capital Markets Ltd (including its affiliates) or its officers, directors, personnel and employees, including persons involved in the preparation or issuance of this material may; (a) from time to time, have positions in, and buy or sell or (b) be engaged in any other transaction and earn brokerage or other compensation in the financial instruments/products discussed herein or act as advisor or lender/borrower in respect of such securities/financial instruments/products or have other potential conflict of interest with respect to any recommendation and related information and opinions. The said persons may have acted upon and/or in a manner contradictory with the information contained here and may have a position or be otherwise interested in the investment referred to in this document before its publication. The user of this report assumes the entire risk of any use made of this data/report. Arihant especially states that it has no financial liability, whatsoever, to the users of this report.

Arihant Capital Markets Ltd
 #1011 Solitaire Corporate Park Building No.10 1st Floor
 Andheri Ghatkopar Link Road Chakala Andheri (E) Mumbai-400093
 T. 022-42254800. Fax: 022-42254880
www.arihantcapital.com