

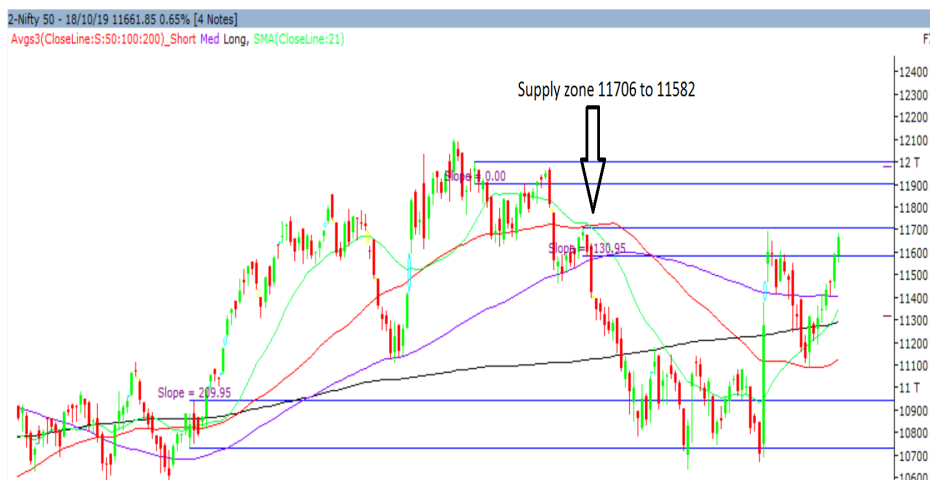
Tuesday, 22<sup>nd</sup> October, 2019

Indian Indices	Last Price	(%) Chg
BSE	39298.38	0.63
NSE	11661.85	0.65
World Indices		
Dow Jones	26827.64	0.21
Nasdaq	8162.99	0.91
Nikkei	22548.90	0.25
Hang Seng	26770.98	0.17
FTSE	7163.64	0.18
Commodity	Last Price	(%) Chg
GOLD(\$/ounce)	1487.10	-0.07
Silver (\$/Ounce)	17.54	-0.32
Crude (\$/BBL)	58.96	0.00
Aluminium spot (\$/mt)	1726.50	0.07
Copper SPOT (\$/mt)	5834.25	-0.09
Lead Spot (\$/MT)	2200.50	-0.45
Natural gas \$/MMBtu	2.24	0.18
Currency	Last Price	(%) Chg
USD-INR	71.20	-0.07
EUR-INR	79.35	0.15
Bond	Last Price	(%) Chg
India 10 Yr Bond yield	6.69	-0.10

52 Wk High (A group)			52 Wk Low (A group)		
Company	Close Price	52 Wk High	Company	Close Price	52 Wk Low
ATUL	4207	4278	DHFL	21.4	19.5
BAJAJFIN	4318	4200	KTKBANK	69.2	68.0
BERGERP	499	505	ORIENTB	49.5	49.4
GLAXO	8959	8993	JKBANK	31.6	29.7
HUL	2106	2115	--	--	--

Source: BSE

### Market Technical Outlook



Nifty opened on a subdued note but momentum on the upside intensified as the day progressed which led the indices to close near days high. On the daily chart, we are observing that prices have entered the supply zone (Supply zone: 11706 to 11582). However, looking at the two consecutive strong bull candles we are of the opinion that momentum on the upside is likely to continue.

In coming trading session if Nifty opens in the range of 11630 - 11580 then, go long, with a stop loss of 11555 for a target of 11692 - 11712 - 11743 levels.

### News for stocks

<b>INFOSYS</b>	An anonymous whistleblower letter has alleged that the company's Chief Executive Officer Salil Parekh dressed up the company's books—accusations that could plunge the software services provider into its second leadership-related crisis in a little over two years.
<b>AU SMALL FINANCE BANK</b>	Reports 89% jump in Q2 net profit. Gross NPA remained stable at 2 per cent and net NPA improved to 1.1% from 1.3% in the year-ago period.

### Foreign Institutional Investments (FII's) Activities

Name of Segment	Net Buyer/seller	Rs In Cr
Index Futures	Net Sell	-559.91
Stock Futures	Net Buy	655.82
<b>Net Future Position</b>	<b>Net Buy</b>	<b>95.91</b>
Index Options	Net Sell	-376.51
Stock Options	Net Buy	57.11
<b>Net Options Position</b>	<b>Net Buy</b>	<b>319.40</b>
FII In cash Segment	Net Buy	36.56
DII In cash Segment	Net Buy	586.88
<b>Net Cash Position</b>	<b>Net Buy</b>	<b>623.44</b>

**Technical Levels for Nifty 50 Companies**

Company	Closing 18-10-2019	Buy/Sell Trigger	Resistance 1	Resistance 2	Support 1	Support 2
ADANI PORTS	421.70	417.83	427.67	433.63	411.87	402.03
ASIAN PAINT	1816.75	1809.30	1831.90	1847.05	1794.15	1771.55
AXIS BANK	709.55	710.17	715.08	720.62	704.63	699.72
BAJAJ-AUTO	3087.05	3094.00	3113.00	3138.95	3068.05	3049.05
BAJAJ FINSV	8265.95	8311.18	8392.37	8518.78	8184.77	8103.58
BAJ FINANCE	4137.65	4138.88	4197.77	4257.88	4078.77	4019.88
BHARTIARTL	383.50	383.47	386.43	389.37	380.53	377.57
BPCL	520.30	520.65	534.55	548.80	506.40	492.50
BRITANNIA	3252.35	3244.70	3266.85	3281.35	3230.20	3208.05
CIPLA	444.15	445.13	450.17	456.18	439.12	434.08
COALINDIA	205.95	203.40	209.05	212.15	200.30	194.65
DRREDDY	2724.85	2726.62	2743.18	2761.52	2708.28	2691.72
EICHERMOT	20275.90	20340.33	20615.57	20955.23	20000.67	19725.43
GAIL	129.55	129.25	130.70	131.85	128.10	126.65
GRASIM	746.50	737.93	757.57	768.63	726.87	707.23
HCLTECH	1095.50	1096.45	1104.50	1113.50	1087.45	1079.40
HDFC	2094.45	2087.18	2109.27	2124.08	2072.37	2050.28
HDFC BANK	1229.00	1227.73	1235.12	1241.23	1221.62	1214.23
HEROMOTOCO	2646.15	2638.02	2670.18	2694.22	2613.98	2581.82
HINDALCO	187.40	188.47	190.28	193.17	185.58	183.77
HINDUNILVR	2106.85	2104.52	2118.33	2129.82	2093.03	2079.22
ICICIBANK	437.80	438.92	442.58	447.37	434.13	430.47
INDUSINDBK	1342.65	1340.48	1363.87	1385.08	1319.27	1295.88
INFRA TEL	261.60	259.53	265.07	268.53	256.07	250.53
INFY	767.85	767.22	774.43	781.02	760.63	753.42
IOC	145.60	146.18	147.62	149.63	144.17	142.73
ITC	246.50	246.47	247.83	249.17	245.13	243.77
JSWSTEEL	223.35	222.95	225.60	227.85	220.70	218.05
KOTAK BANK	1615.25	1608.62	1626.23	1637.22	1597.63	1580.02
LT	1447.80	1443.40	1461.40	1475.00	1429.80	1411.80
M&M	593.30	590.80	598.00	602.70	586.10	578.90
MARUTI	7302.30	7271.32	7480.98	7659.67	7092.63	6882.97
NESTLE IND	14835.45	14727.37	15051.43	15267.42	14511.38	14187.32
NTPC	121.05	120.32	122.23	123.42	119.13	117.22
ONGC	143.50	142.63	145.37	147.23	140.77	138.03
POWERGRID	202.55	200.93	204.87	207.18	198.62	194.68
RELIANCE	1416.35	1414.32	1429.93	1443.52	1400.73	1385.12
SBIN	269.65	268.07	272.93	276.22	264.78	259.92
SUN PHARMA	401.65	401.88	406.27	410.88	397.27	392.88
TATAMOTORS	136.85	138.08	140.57	144.28	134.37	131.88
TATA STEEL	359.60	358.05	364.35	369.10	353.30	347.00
TCS	2057.35	2048.75	2072.50	2087.65	2033.60	2009.85
TECHM	734.20	731.55	740.40	746.60	725.35	716.50
TITAN	1300.60	1293.22	1312.38	1324.17	1281.43	1262.27
ULTRACEMCO	4295.30	4304.65	4353.65	4412.00	4246.30	4197.30
UPL	599.00	597.00	605.50	612.00	590.50	582.00
VEDL	150.25	150.08	152.37	154.48	147.97	145.68
WIPRO	248.90	249.15	250.45	252.00	247.60	246.30
YES BANK	51.40	50.03	54.07	56.73	47.37	43.33
ZEEL	250.20	250.83	262.12	274.03	238.92	227.63

(Source – IRIS)

**Guru Call: From the expert's desk**

Company	Reco Date	Reco Price (Buy on dips)	High till date	Return%
Asian Paints Ltd.	30-Mar-17	1068.10	1820.00	70.40%
Avenue Supermarts Ltd.	31-Jul-17	898.55	1945.00	116.46%
Axis Bank Ltd.	10-Apr-18	519.30	827.75	59.40%
Bajaj Finance Ltd.	11-Oct-18	2271.00	4070.00	79.22%
Bajaj Finserv Ltd	1-Nov-16	3416.80	8668.00	153.69%
Bajaj Holdings And Investment Ltd	19-May-16	1499.10	3800.00	153.49%
Bandhan Bank Ltd.	19-Dec-18	556.40	636.30	14.36%
Century Textile and Industries Ltd	25-Nov-16	739.30	1471.00	98.97%
Cipla Ltd	20-Mar-17	597.30	678.50	13.59%
Colgate Palmolive	16-Sep-19	1314.00	1589.00	20.93%
DLF Ltd	10-Apr-19	194.30	209.65	7.90%
Emami Limited	26-Jun-19	290.35	343.00	18.13%
Godrej Industries Ltd.	12-Feb-18	550.70	657.60	19.41%
Godrej Properties Ltd.	19-Dec-18	685.30	1119.60	63.37%
Grasim Industries Ltd.	31-May-17	1132.50	1331.00	17.53%
Havells India Ltd.	8-Dec-17	525.75	806.85	53.47%
Housing Development Finance Corp Ltd	19-Dec-17	1720.00	2357.85	37.08%
HDFC Asset Management Company Ltd.	19-Dec-18	1572.90	2975.00	89.14%
HDFC Bank Limited	10-Nov-16	639.00	1282.00	100.63%
HDFC Life Insurance Co Ltd	19-Jan-18	485.05	609.00	25.55%
Hindustan Unilever Ltd.	13-Nov-17	1290.70	2100.00	62.70%
ICICI Bank Ltd.	6-Apr-18	278.65	458.00	64.36%
ICICI Prudential Life Insurance Company Ltd.	28-Jun-18	375.80	474.00	26.13%
ICICI Lombard General Insurance	19-Sep-19	1154.85	1284.00	11.18%
Infosys Ltd.	17-Aug-17	487.60	847.00	73.71%
Kotak Mahindra Bank Ltd	10-Nov-16	822.10	1683.00	104.72%
Mahindra & Mahindra Ltd.	5-Jun-17	709.25	993.00	40.01%
Manappuram Finance Ltd.	24-Apr-18	119.20	145.00	21.64%
Marico Ltd.	4-Apr-18	325.00	404.00	24.31%
Nestle India Ltd.	27-Sep-18	9729.40	14144.00	45.37%
Oberoi Realty Ltd.	23-Nov-17	508.60	641.70	26.17%
Phoenix Mills Limited	7-Jul-19	655.15	767.00	17.07%
Pidilite Industries Limited	4-Oct-16	681.60	1493.00	119.04%
Prestige Estates Projects Limited	6-Jun-19	286.70	317.00	10.57%
Rites Ltd.	19-Dec-18	226.96	281.00	23.81%
State Bank Of India	28-Aug-18	308.00	373.80	21.36%
Tata Global Beverages Ltd.	29-Jun-17	149.15	328.80	120.45%
Tata Consultancy Services Ltd.	8-Jan-18	1344.60	2296.00	70.76%
Trent Ltd.	19-Dec-18	348.40	529.00	51.84%
Ultratech Cement Ltd.	19-Dec-18	4084.60	4904.00	20.06%
Voltas Ltd.	27-Mar-18	613.90	705.00	14.84%
Whirlpool Of India Ltd.	7-Dec-16	872.25	1981.00	127.11%

**Securities in Ban For Trade Date 22-10-2019**

NIL.

**NIFTY 50 STOCKS BELOW 200SMA**

SCRIP NAME	SMA 200	CLOSING (18-10-2019)
WIPRO	267.04	248.90
ZEEL	377.42	250.20
ITC	275.88	246.50
TATASTEEL	459.65	359.60
SBIN	306.01	269.65
GRASIM	808.75	746.50
TATAMOTORS	163.24	136.85
CIPLA	520.06	444.15
M&M	630.88	593.30
HINDALCO	198.21	187.40
HEROMOTOCO	2668.19	2646.15
SUNPHARMA	425.89	401.65
AXISBANK	720.17	709.55
ONGC	148.66	143.50
VEDL	166.15	150.25
GAIL	155.90	129.55
INDUSINDBK	1500.21	1342.65
TCS	2088.79	2057.35
TECHM	737.57	734.20
JSWSTEEL	264.51	223.35
NTPC	125.73	121.05
YESBANK	148.69	51.40
COALINDIA	226.56	205.95
INFRADEL	277.01	261.60

**Bulk Deals (BSE)**

N.A

**Bulk Deals (NSE)**

Deal Date	Scrip Name	Client Name	Deal Type	Quantity	Price
18-Oct-19	Indiabulls Hsg Fin Ltd	WISDOMTREE EMERGING MARKETS SMALLCAP DIVIDEND FUND	BUY	2589192	225.19
18-Oct-19	Eveready Industries India	GOLDMAN SACHS INDIA LIMITED	SELL	1875904	38.80
18-Oct-19	Eveready Industries India	GLADIATOR VYAPAAR PVT LTD	SELL	56926	38.48

 Note- Executed on 18<sup>th</sup> Oct 2019. Bulk Deal Buy/Sell done by fund house is considered.

**Weekly Expiry Most Active Nifty Call Option**

Symbol	Expiry Date	Strike Price	Highest Open Interest (OI)
NIFTY	24-Oct-19	11700	1089300
NIFTY	24-Oct-19	11800	1076625
NIFTY	24-Oct-19	12000	1018350

**Weekly Expiry Most Active Nifty Put Option**

Symbol	Expiry Date	Strike Price	Highest Open Interest (OI)
NIFTY	24-Oct-19	11500	1599150
NIFTY	24-Oct-19	11600	1543950
NIFTY	24-Oct-19	11300	1223175

Research Analyst Registration No.	Contact	Website	mail Id
INH000002764	SMS: 'Arihant' to 56677	<a href="http://www.arihantcapital.com">www.arihantcapital.com</a>	<a href="mailto:arihant.research@arihantcapital.com">arihant.research@arihantcapital.com</a>

**Arihant is Forbes Asia's '200 Best under a \$Billion' Company  
'Best Emerging Commodities Broker' awarded by UTV Bloomberg**

**Disclaimer:** This document has been prepared by Arihant Capital Markets Limited (hereinafter called as Arihant) and its subsidiaries and associated companies. This document does not constitute an offer or solicitation for the purchase and sale of any financial instrument by Arihant. Receipt and review of this document constitutes your agreement not to circulate, redistribute, retransmit or disclose to others the contents, opinions, conclusion, or information contained herein. This document has been prepared and issued on the basis of publicly available information, internally developed data and other sources believed to be reliable. Whilst meticulous care has been taken to ensure that the facts stated are accurate and opinions given are fair and reasonable, neither the analyst nor any employee of our company is in any way is responsible for its contents and nor is its accuracy or completeness guaranteed. This document is prepared for assistance only and is not intended to be and must not alone be taken as the basis for an investment decision. All recipients of this material should before dealing and or transacting in any of the products referred to in this material make their own investigation, seek appropriate professional advice. The investments discussed in this material may not be suitable for all investors. The recipient alone shall be fully responsible/are liable for any decision taken on the basis of this material. Arihant Capital Markets Ltd (including its affiliates) or its officers, directors, personnel and employees, including persons involved in the preparation or issuance of this material may; (a) from time to time, have positions in, and buy or sell or (b) be engaged in any other transaction and earn brokerage or other compensation in the financial instruments/products discussed herein or act as advisor or lender/borrower in respect of such securities/financial instruments/products or have other potential conflict of interest with respect to any recommendation and related information and opinions. The said persons may have acted upon and/or in a manner contradictory with the information contained here and may have a position or be otherwise interested in the investment referred to in this document before its publication. The user of this report assumes the entire risk of any use made of this data/report. Arihant especially states that it has no financial liability, whatsoever, to the users of this report.

**Arihant Capital Markets Ltd**

#1011 Solitaire Corporate Park Building No.10 1<sup>st</sup> Floor  
 Andheri Ghatkopar Link Road Chakala Andheri (E) Mumbai-400093  
 T. 022-42254800. Fax: 022-42254880  
[www.arihantcapital.com](http://www.arihantcapital.com)