

To join our research group on TELEGRAM, please click on the links - <https://bit.ly/3JTeFcc> and <https://bit.ly/3TNulgc>

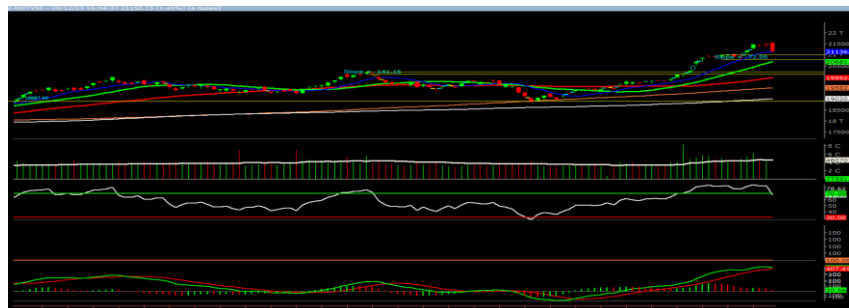
Friday, 22<sup>nd</sup> Dec 2023

| Indian Indices         | Last Price | (%) Chg |
|------------------------|------------|---------|
| NSE                    | 21255.05   | 0.50    |
| BSE                    | 70865.10   | 0.51    |
| World Indices          | Last Price | (%) Chg |
| Dow Jones              | 37404.35   | 0.87    |
| Nasdaq                 | 14963.87   | 1.26    |
| Nikkei                 | 33235.00   | 0.29    |
| Hang Seng              | 16832.50   | 0.91    |
| FTSE                   | 7694.73    | -0.27   |
| Commodity              | Last Price | (%) Chg |
| GOLD(\$/ounce)         | 2061.65    | 0.50    |
| Silver (\$/Ounce)      | 24.75      | 0.69    |
| Crude (\$/BBL)         | 74.55      | 0.89    |
| Aluminium spot (\$/mt) | 2271.50    | 0.91    |
| Copper SPOT (\$/mt)    | 8639.50    | 0.38    |
| Zinc (\$/MT)           | 2574.00    | 0.78    |
| Natural gas \$/MMBtu   | 2.58       | 0.12    |
| Currency               | Last Price | (%) Chg |
| USDINR                 | 83.25      | 0.14    |
| EURINR                 | 91.28      | 0.38    |
| Bond                   |            |         |
| India 10 Yr Bond yield | 7.18       | 0.13    |

| 52 Wk High (A group) |             |            | 52 Wk Low (A group) |             |           |
|----------------------|-------------|------------|---------------------|-------------|-----------|
| Company              | Close Price | 52 Wk High | Company             | Close Price | 52 Wk Low |
| AUROPHARM            | 1092        | 1097       | --                  | --          | --        |
| CYIENT               | 2329        | 2361       | --                  | --          | --        |
| FORTIS               | 396         | 407        | --                  | --          | --        |
| GESHIP               | 997         | 1024       | --                  | --          | --        |
| HINDCOPPER           | 218         | 220        | --                  | --          | --        |

Source: BSE

### Market Technical Outlook



Nifty opened lower in wake of weak global clues but recovered all its losses during the day to close in green. On the daily chart, prices took support within the upward gap area of 20950–21074 by making a low of 20976 and close on a strong note. In coming trading session if nifty for first hour trades above 21300 level then it may test 21350 - 21440 levels. On the downside, 21140–20060 levels may act as support for the day.

Broadly, as expected and mentioned in your earlier report prices took support at the upward gap area mentioned above. This suggests that momentum on the upside is likely to continue. Hence, one should adopt cautiously positive approach at current level as stock specific activity is likely to continue.

### Foreign Institutional Investments (FII's) Activities

| Name of Segment             | Net Buyer/seller | Rs In Cr         |
|-----------------------------|------------------|------------------|
| Index Futures               | Net Buy          | 211.81           |
| Stock Futures               | Net Sell         | -2565.94         |
| <b>Net Future Position</b>  | <b>Net Sell</b>  | <b>-2354.13</b>  |
| Index Options               | Net Sell         | -23426.88        |
| Stock Options               | Net Buy          | 694.39           |
| <b>Net Options Position</b> | <b>Net Sell</b>  | <b>-22732.49</b> |
| FII In cash Segment         | Net Sell         | -1636.19         |
| DII In cash Segment         | Net Buy          | 1464.7           |
| <b>Net Cash Position</b>    | <b>Net Sell</b>  | <b>-171.49</b>   |

**Guru Call: From the expert's desk**

| Company                                      | Reco Date | Reco Price (Buy on dips) | High till date | Return% |
|--|-----------|--------------------------|----------------|---------|
| Adani Power                                  | 20-Apr-22 | 235                      | 345            | 46.6%   |
| Adani Wilmar Ltd                             | 20-Apr-22 | 668                      | 878            | 31.5%   |
| Aditya Birla Capital Ltd                     | 13-Aug-21 | 124                      | 139            | 12.5%   |
| Aditya Birla Fashion and Retail Ltd          | 8-Feb-21  | 164                      | 322            | 95.9%   |
| Apcotex Industries Limited                   | 13-Aug-21 | 343                      | 679            | 98.0%   |
| Asian Paints Ltd.                            | 30-Mar-17 | 1068                     | 3590           | 236.1%  |
| Avenue Supermarts Ltd.                       | 31-Jul-17 | 899                      | 5900           | 556.6%  |
| Axis Bank Ltd.                               | 10-Apr-18 | 519                      | 867            | 67.0%   |
| Bajaj Finance Ltd                            | 20-Apr-22 | 7033                     | 7295           | 3.7%    |
| Bajaj Finserv Ltd                            | 1-Nov-16  | 3417                     | 19325          | 465.6%  |
| Bajaj Holdings And Investment Ltd            | 19-May-16 | 1499                     | 6598           | 340.1%  |
| CDSL   | 17-Sep-20 | 486                      | 1734           | 256.9%  |
| Chola finance                                | 25-Sep-20 | 239                      | 770            | 222.6%  |
| Chola Holding                                | 23-Sep-20 | 392                      | 763            | 94.7%   |
| Cipla Ltd                                    | 20-Mar-17 | 597                      | 1083           | 81.3%   |
| Colgate Palmolive                            | 16-Sep-19 | 1314                     | 1823           | 38.7%   |
| D. P. Abhushan Ltd                           | 20-Apr-22 | 396                      | 495            | 25.0%   |
| Dabur India                                  | 22-Oct-19 | 466                      | 659            | 41.4%   |
| DLF Ltd                                      | 10-Apr-19 | 194                      | 450            | 131.6%  |
| Dr Reddy                                     | 4-Aug-20  | 4530                     | 5615           | 24.0%   |
| Emami Limited                                | 26-Jun-19 | 290                      | 622            | 114.2%  |
| Finolex Cables Ltd                           | 8-Feb-21  | 130                      | 268            | 106.2%  |
| Fortis                                       | 14-Jul-20 | 127                      | 314            | 147.2%  |
| Godawari Power                               | 20-Apr-22 | 455                      | 482            | 6.0%    |
| Godrej Consumer Products Limited             | 16-Jun-20 | 634                      | 1138           | 79.5%   |
| HDFC Asset Management Company Ltd.           | 19-Dec-18 | 1573                     | 3844           | 144.4%  |
| HDFC Bank Limited                            | 10-Nov-16 | 639                      | 1725           | 170.0%  |
| HDFC Life Insurance Co Ltd                   | 19-Jan-18 | 485                      | 776            | 60.0%   |
| Heritage Foods Ltd                           | 20-Apr-22 | 330                      | 354            | 7.2%    |
| Hero Motocorp Ltd                            | 29-Sep-20 | 3175                     | 3629           | 14.3%   |
| Hindustan Unilever Ltd.                      | 13-Nov-17 | 1291                     | 2859           | 121.5%  |
| Housing Development Finance Corp Ltd         | 19-Dec-17 | 1720                     | 3365           | 95.6%   |
| ICICI Bank Ltd.                              | 6-Apr-18  | 279                      | 867            | 211.1%  |
| ICICI Lombard General Insurance              | 19-Sep-19 | 1155                     | 1675           | 45.0%   |
| ICICI Prudential Life Insurance Company Ltd. | 28-Jun-18 | 376                      | 724            | 92.7%   |
| ICICI Securities Ltd                         | 24-Sep-20 | 467                      | 896            | 92.0%   |
| Indusindbnk                                  | 8-Jun-20  | 451                      | 1242           | 175.4%  |
| Infosys Ltd.                                 | 17-Aug-17 | 488                      | 1954           | 300.7%  |
| Kotak Mahindra Bank Ltd                      | 10-Nov-16 | 822                      | 2253           | 174.1%  |
| Linde India                                  | 20-Apr-22 | 3499                     | 3649           | 4.3%    |
| Marico Ltd.                                  | 4-Apr-18  | 325                      | 608            | 87.1%   |
| Maruti Suzuki India Ltd                      | 13-Aug-20 | 5989                     | 9050           | 51.1%   |
| Oberoi Realty Ltd.                           | 23-Nov-17 | 509                      | 1052           | 106.8%  |
| PEL  | 2-Sep-20  | 1246                     | 3015           | 141.9%  |
| Phoenix Mills Limited                        | 7-Jul-19  | 655                      | 1200           | 83.2%   |
| Poonawalla Fincorp Ltd                       | 13-Aug-21 | 175                      | 344            | 96.1%   |
| Procter & Gamble Hygiene & Health Care       | 13-Aug-21 | 12870                    | 16466          | 27.9%   |
| Raymond                                      | 25-Sep-20 | 264                      | 1280           | 385.7%  |
| Reliance                                     | 22-Apr-20 | 1351                     | 2856           | 111.4%  |
| SBI Life                                     | 20-May-20 | 715                      | 1293           | 80.8%   |
| Shree Renuka Sugars Limited                  | 13-Aug-21 | 27                       | 63             | 135.1%  |
| Spectrum Electrical                          | 18-Apr-22 | 98                       | 103            | 5.0%    |

**Guru Call: From the expert's desk**

| Company                          | Reco Date | Reco Price (Buy on dips) | High till date | Return% |
|----------------------------------|-----------|--------------------------|----------------|---------|
| State Bank of India              | 3-Feb-21  | 336                      | 549            | 63.4%   |
| Sun Pharma                       | 7-Aug-20  | 525                      | 967            | 84.2%   |
| Sun TV Network Ltd.              | 13-Aug-21 | 525                      | 612            | 16.5%   |
| Tata Chemicals Limited           | 24-Dec-19 | 297                      | 1158           | 290.0%  |
| Tata Consultancy Services Ltd.   | 8-Jan-18  | 1345                     | 4046           | 200.9%  |
| Tata motors                      | 20-Apr-22 | 441                      | 450            | 2.0%    |
| Tata motors dvr                  | 20-Apr-22 | 220                      | 226            | 2.6%    |
| Tata Power                       | 20-Apr-22 | 249                      | 260            | 4.4%    |
| Trent Ltd.                       | 19-Dec-18 | 348                      | 1347           | 286.6%  |
| Ultratech Cement Ltd.            | 19-Dec-18 | 4085                     | 8269           | 102.4%  |
| UTI Asset Management Company Ltd | 13-Aug-21 | 1044                     | 1217           | 16.6%   |
| Vedanta Ltd                      | 28-Jun-21 | 261                      | 441            | 69.1%   |
| Voltas Ltd.                      | 27-Mar-18 | 614                      | 1357           | 121.0%  |
| Whirlpool Of India Ltd.          | 7-Dec-16  | 872                      | 2550           | 192.3%  |
| Wipro Limited                    | 13-Aug-21 | 616                      | 740            | 20.2%   |

**NIFTY 50 STOCKS BELOW 200SMA**

| SCRIP NAME | SMA 200        | CLOSING (21-12-2023) |
|------------|----------------|----------------------|
| HINDUNILVR | <b>2554.27</b> | <b>2553.2</b>        |
| UPL        | <b>642.04</b>  | <b>577.4</b>         |
| --         | --             | --                   |
| --         | --             | --                   |
| --         | --             | --                   |
| --         | --             | --                   |
| --         | --             | --                   |
| --         | --             | --                   |
| --         | --             | --                   |
| --         | --             | --                   |
| --         | --             | --                   |
| --         | --             | --                   |
| --         | --             | --                   |
| --         | --             | --                   |
| --         | --             | --                   |
| --         | --             | --                   |
| --         | --             | --                   |
| --         | --             | --                   |
| --         | --             | --                   |
| --         | --             | --                   |
| --         | --             | --                   |
| --         | --             | --                   |
| --         | --             | --                   |
| --         | --             | --                   |
| --         | --             | --                   |
| --         | --             | --                   |
| --         | --             | --                   |
| --         | --             | --                   |
| --         | --             | --                   |
| --         | --             | --                   |
| --         | --             | --                   |
| --         | --             | --                   |

**Weekly Expiry Most Active Nifty Call Option**

| Symbol | Expiry Date | Strike Price | Highest Open Interest (Contracts) |
|--------|-------------|--------------|-----------------------------------|
| NIFTY  | 28-Dec-2023 | 22,000       | 1,82,684                          |
| NIFTY  | 28-Dec-2023 | 21,500       | 1,32,371                          |
| NIFTY  | 28-Dec-2023 | 21,600       | 94,311                            |

**Weekly Expiry Most Active Nifty Put Option**

| Symbol | Expiry Date | Strike Price | Highest Open Interest (Contracts) |
|--------|-------------|--------------|-----------------------------------|
| NIFTY  | 28-Dec-2023 | 21,000       | 1,75,498                          |
| NIFTY  | 28-Dec-2023 | 20,000       | 1,11,277                          |
| NIFTY  | 28-Dec-2023 | 19,000       | 1,06,382                          |

**Securities in Ban For Trade Date: 22-12-2023**

ASHOKLEY, BALRAMCHIN, DELTACORP, HINDCOPPER, INDIACEM, MANAPPURAM, RBLBANK, SAIL

**Bulk Deals (BSE)**

N.A

**Bulk Deals (NSE)**

N.A

Note- Executed on 20<sup>th</sup> Dec 2023. Bulk Deal Buy/Sell done by fund house is considered.

**Research Analyst Registration No.**

INH000002764

**Contact**

SMS: 'Arihant' to 56677

**Website**[www.arihantcapital.com](http://www.arihantcapital.com)**mail Id**[arihant.research@arihantcapital.com](mailto:arihant.research@arihantcapital.com)**Arihant is Forbes Asia's '200 Best under a \$Billion' Company  
'Best Emerging Commodities Broker' awarded by UTV Bloomberg**

**Disclaimer:** This document has been prepared by Arihant Capital Markets Limited (hereinafter called as Arihant) and its subsidiaries and associated companies. This document does not constitute an offer or solicitation for the purchase and sale of any financial instrument by Arihant. Receipt and review of this document constitutes your agreement not to circulate, redistribute, retransmit or disclose to others the contents, opinions, conclusion, or information contained herein. This document has been prepared and issued on the basis of publicly available information, internally developed data and other sources believed to be reliable. Whilst meticulous care has been taken to ensure that the facts stated are accurate and opinions given are fair and reasonable, neither the analyst nor any employee of our company is in any way is responsible for its contents and nor is its accuracy or completeness guaranteed. This document is prepared for assistance only and is not intended to be and must not alone be taken as the basis for an investment decision. All recipients of this material should before dealing and or transacting in any of the products referred to in this material make their own investigation, seek appropriate professional advice. The investments discussed in this material may not be suitable for all investors. The recipient alone shall be fully responsible/are liable for any decision taken on the basis of this material. Arihant Capital Markets Ltd (including its affiliates) or its officers, directors, personnel and employees, including persons involved in the preparation or issuance of this material may; (a) from time to time, have positions in, and buy or sell or (b) be engaged in any other transaction and earn brokerage or other compensation in the financial instruments/products discussed herein or act as advisor or lender/borrower in respect of such securities/financial instruments/products or have other potential conflict of interest with respect to any recommendation and related information and opinions. The said persons may have acted upon and/or in a manner contradictory with the information contained here and may have a position or be otherwise interested in the investment referred to in this document before its publication. The user of this report assumes the entire risk of any use made of this data/report. Arihant especially states that it has no financial liability, whatsoever, to the users of this report.

**Arihant Capital Markets Ltd**

#1011 Solitaire Corporate Park Building No.10 1<sup>st</sup> Floor  
Andheri Ghatkopar Link Road Chakala Andheri (E) Mumbai-400093  
T. 022-42254800. Fax: 022-42254880  
[www.arihantcapital.com](http://www.arihantcapital.com)