

To join our research group on TELEGRAM, please click on the links - <https://bit.ly/37T17JR> and <https://bit.ly/2svtU7k>

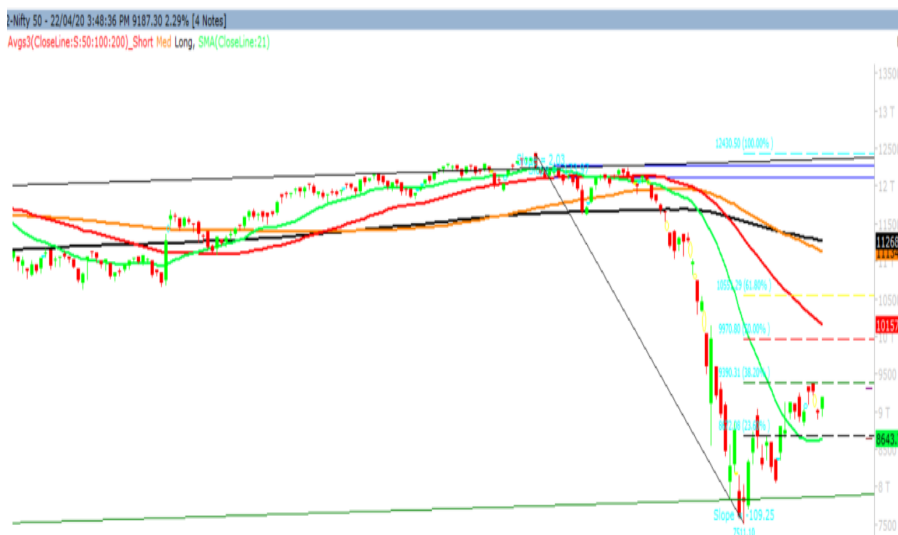
Thursday, 23rd March, 2020

Indian Indices	Last Price	(%) Chg
BSE	31379.55	2.42
NSE	9187.30	2.29
World Indices	Last Price	(%) Chg
Dow Jones	23475.82	1.99
Nasdaq	8495.38	2.81
Nikkei	19292.40	0.81
Hang Seng	24028.13	0.56
FTSE	5770.63	2.3
Commodity	Last Price	(%) Chg
GOLD(\$/ounce)	1741.60	0.19
Silver (\$/Ounce)	15.46	0.78
Crude (\$/BBL)	20.95	2.85
Aluminium spot (\$/mt)	1525.00	0.25
Copper SPOT (\$/mt)	5115.00	0.047
Lead Spot (\$/MT)	1671.75	0.51
Natural gas \$/MMBtu	1.92	-0.88
Currency	Last Price	(%) Chg
USD-INR	76.51	-0.62
EUR-INR	83.20	-0.19
Bond	Last Price	(%) Chg
India 10 Yr Bond yield	6.22	0.19

52 Wk High (A group)			52 Wk Low (A group)		
Company	Close Price	52 Wk High	Company	Close Price	52 Wk Low
DRREDDY	4057	4095	ABFRL	122	121
--	--	--	BAJFINAN	2147	2024
--	--	--	GODREJ	264	260
--	--	--	RBLBANK	105	101
--	--	--	--	--	--

Source: BSE

Market Technical Outlook



Nifty opened on a subdued note but momentum on the upside intensified as the day progressed which led the indices to close near days high. On the daily chart, we are observing range bound activity which gives no clear direction of trend. In coming trading session if Nifty trades above 9210 level then it is likely to test 9300 – 9390 levels. On the downside, 9000 – 8821 may act support for the day.

We maintain our stance that 8821 holds significance and any daily close below 8821 would derailed the higher- top higher- bottom formation on the daily chart. Hence, one needs to adopt cautiously positive approach at current level.

News for stocks

--	--
--	--

Foreign Institutional Investments (FII's) Activities

Name of Segment	Net Buyer/seller	Rs In Cr
Index Futures	Net Buy	417.49
Stock Futures	Net Buy	576.75
Net Future Position	Net Buy	994.24
Index Options	Net Sell	-198.29
Stock Options	Net Sell	-45.72
Net Options Position	Net Sell	-244.01
FII In cash Segment	Net Sell	-1326.09
DII In cash Segment	Net Buy	863.82
Net Cash Position	Net Sell	-462.27

Technical Levels for Nifty 50 Companies

Company	Closing 22-04-2020	Buy/Sell Trigger	Resistance 1	Resistance 2	Support 1	Support 2
ADANI PORTS	271.90	268.08	277.67	283.43	262.32	252.73
ASIAN PAINT	1813.00	1782.42	1852.58	1892.17	1742.83	1672.67
AXIS BANK	431.15	425.90	439.80	448.45	417.25	403.35
BAJAJ-AUTO	2379.70	2362.63	2429.17	2478.63	2313.17	2246.63
BAJAJ FINSV	4775.75	4692.13	4899.27	5022.78	4568.62	4361.48
BAJ FINANCE	2148.25	2113.53	2204.72	2261.18	2057.07	1965.88
BHARTIARTL	501.40	503.50	514.95	528.50	489.95	478.50
BPCL	356.70	351.28	365.42	374.13	342.57	328.43
BRITANNIA	2952.65	2916.60	3005.75	3058.85	2863.50	2774.35
CIPLA	587.20	590.65	596.30	605.40	581.55	575.90
COALINDIA	140.70	139.00	143.00	145.30	136.70	132.70
DRREDDY	4056.80	4037.45	4113.65	4170.50	3980.60	3904.40
EICHERMOT	13703.30	13616.08	14032.17	14361.03	13287.22	12871.13
GAIL	84.20	83.20	86.10	88.00	81.30	78.40
GRASIM	510.40	508.72	514.98	519.57	504.13	497.87
HCLTECH	462.40	460.62	471.23	480.07	451.78	441.17
HDFC	1664.15	1656.43	1686.72	1709.28	1633.87	1603.58
HDFC BANK	928.60	922.97	938.63	948.67	912.93	897.27
HEROMOTOCO	1887.65	1863.18	1929.47	1971.28	1821.37	1755.08
HINDALCO	108.30	106.60	110.45	112.60	104.45	100.60
HINDUNILVR	2386.15	2353.92	2432.18	2478.22	2307.88	2229.62
ICICIBANK	335.95	332.33	341.62	347.28	326.67	317.38
INDUSINDBK	415.90	407.00	429.40	442.90	393.50	371.10
INFRA TEL	167.55	166.65	169.30	171.05	164.90	162.25
INFY	641.85	638.30	648.55	655.25	631.60	621.35
IOC	83.00	81.97	84.78	86.57	80.18	77.37
ITC	182.25	180.60	185.20	188.15	177.65	173.05
JSW STEEL	161.20	159.90	164.30	167.40	156.80	152.40
KOTAK BANK	1152.15	1142.37	1176.53	1200.92	1117.98	1083.82
LT	852.60	862.70	875.40	898.20	839.90	827.20
M&M	340.20	335.52	350.43	360.67	325.28	310.37
MARUTI	5180.85	5140.03	5289.07	5397.28	5031.82	4882.78
NESTLE IND	17642.05	17386.42	17955.63	18269.22	17072.83	16503.62
NTPC	97.60	97.05	99.20	100.80	95.45	93.30
ONGC	65.35	64.17	67.53	69.72	61.98	58.62
POWERGRID	162.20	160.52	164.43	166.67	158.28	154.37
RELIANCE	1363.60	1349.50	1399.00	1434.40	1314.10	1264.60
SBIN	188.70	186.52	191.68	194.67	183.53	178.37
SHREECEM	19217.15	19149.70	19687.45	20157.75	18679.40	18141.65
SUN PHARMA	474.35	475.25	481.50	488.65	468.10	461.85
TATAMOTORS	75.90	75.00	77.45	79.00	73.45	71.00
TATA STEEL	268.35	265.82	272.43	276.52	261.73	255.12
TCS	1769.50	1759.55	1799.95	1830.40	1729.10	1688.70
TECHM	518.30	515.75	524.45	530.60	509.60	500.90
TITAN	951.40	943.07	963.58	975.77	930.88	910.37
ULTRACEMCO	3441.15	3424.93	3473.87	3506.58	3392.22	3343.28
UPL	353.65	349.62	363.03	372.42	340.23	326.82
VEDL	76.10	75.55	77.75	79.40	73.90	71.70
WIPRO	178.55	177.70	180.35	182.15	175.90	173.25
ZEEL	151.85	145.68	161.27	170.68	136.27	120.68

(Source – IRIS)

Guru Call: From the expert's desk				
Company	Reco Date	Reco Price (Buy on dips)	High till date	Return%
Aditiya Birla Capital	22-Nov-19	95.75	115.35	20.47%
Asian Paints Ltd.	30-Mar-17	1068.10	1916.70	79.45%
Avenue Supermarts Ltd.	31-Jul-17	898.55	2560.00	184.90%
Axis Bank Ltd.	10-Apr-18	519.30	827.75	59.40%
Bajaj Finance Ltd.	11-Oct-18	2271.00	4923.40	116.79%
Bajaj Finserv Ltd	1-Nov-16	3416.80	9950.00	191.21%
Bajaj Holdings And Investment Ltd	19-May-16	1499.10	3950.00	163.49%
Bandhan Bank Ltd.	19-Dec-18	556.40	650.00	16.82%
Bharat Petroleum Corporation Ltd.	23-Oct-19	531.50	549.00	3.29%
Century Textile and Industries Ltd	25-Nov-16	326.00	656.90	101.50%
Cipla Ltd	20-Mar-17	597.30	678.45	13.59%
Colgate Palmolive	16-Sep-19	1314.00	1642.60	25.01%
Container Corporation	22-Nov-19	577.00	603.00	4.51%
Dabur India	22-Oct-19	466.00	525.00	12.66%
DLF Ltd	10-Apr-19	194.30	265.90	36.85%
Emami Limited	26-Jun-19	290.35	357.70	23.20%
Godrej Industries Ltd.	12-Feb-18	550.70	657.60	19.41%
Godrej Properties Ltd.	19-Dec-18	685.30	1189.25	73.54%
Grasim Industries Ltd.	31-May-17	1132.50	1331.00	17.53%
Havells India Ltd.	8-Dec-17	525.75	806.85	53.47%
Housing Development Finance Corp Ltd	19-Dec-17	1720.00	2499.90	45.34%
HDFC Asset Management Company Ltd.	19-Dec-18	1572.90	3844.00	144.39%
HDFC Bank Limited	10-Nov-16	639.00	1305.50	104.30%
HDFC Life Insurance Co Ltd	19-Jan-18	485.05	646.40	33.26%
Hindustan Unilever Ltd.	13-Nov-17	1290.70	2308.20	78.83%
ICICI Bank Ltd.	6-Apr-18	278.65	552.20	98.17%
ICICI Prudential Life Insurance Company Ltd.	28-Jun-18	375.80	537.30	42.97%
ICICI Lombard General Insurance	19-Sep-19	1154.90	1440.40	24.72%
Infosys Ltd.	17-Aug-17	487.60	847.00	73.71%
Kansai Nerolac Paints	16-Dec-19	529.85	551.00	3.99%
Kotak Mahindra Bank Ltd	10-Nov-16	822.10	1740.00	111.65%
Mahindra & Mahindra Ltd.	5-Jun-17	709.25	993.00	40.01%
Manappuram Finance Ltd.	24-Apr-18	119.20	194.80	63.42%
Mahanagar Gas	15-Nov-19	1029.00	1246.20	21.11%
Marico Ltd.	4-Apr-18	325.00	404.00	24.31%
Nestle India Ltd.	27-Sep-18	9729.40	16835.15	73.03%
Oberoi Realty Ltd.	23-Nov-17	508.60	641.70	26.17%
Phoenix Mills Limited	7-Jul-19	655.15	979.00	49.43%
Pidilite Industries Limited	4-Oct-16	681.60	1661.00	143.69%
Prestige Estates Projects Limited	6-Jun-19	286.70	426.00	48.59%
Nam-India	25-Nov-18	377.00	452.90	20.13%
Rites Ltd.	19-Dec-18	226.96	331.00	45.84%
RBL Bank	22-Nov-19	334.00	391.20	17.13%
State Bank Of India	28-Aug-18	308.00	373.80	21.36%
Shipping Corporation	22-Nov-19	64.00	65.95	3.05%
Tata Chemicals Limited	24-Dec-19	296.89	339.70	14.42%
Tata Consumer	29-Jun-17	149.15	408.00	173.55%
Tata Consultancy Services Ltd.	8-Jan-18	1344.60	2296.20	70.77%
Trent Ltd.	19-Dec-18	348.40	794.00	127.90%
Ultratech Cement Ltd.	19-Dec-18	4084.60	4904.95	20.08%
Voltas Ltd.	27-Mar-18	613.90	741.00	20.70%
Whirlpool Of India Ltd.	7-Dec-16	872.25	2555.00	192.92%
Zee Entertainment	22-Nov-19	345.00	362.00	4.93%

NIFTY 50 STOCKS BELOW 200SMA

SCRIP NAME	SMA 200	CLOSING (22-04-2020)
INFY	737.10	641.85
WIPRO	240.77	178.55
ZEEL	275.50	151.85
LT	1292.87	852.60
ITC	233.18	182.25
HCLTECH	541.80	462.40
TATASTEEL	395.30	268.35
SBIN	295.99	188.70
GRASIM	730.28	510.40
TATAMOTORS	142.39	75.90
M&M	523.48	340.20
HDFC	2161.16	1664.15
HINDALCO	181.59	108.30
BPCL	427.82	356.70
ICICIBANK	457.24	335.95
HDFCBANK	1169.03	928.60
HEROMOTOCO	2390.42	1887.65
IOC	123.82	83.00
AXISBANK	677.46	431.15
ONGC	119.77	65.35
TITAN	1156.73	951.40
VEDL	137.64	76.10
UPL	542.83	353.65
GAIL	120.96	84.20
SHREECEM	20517.57	19217.15
EICHERMOT	18670.33	13703.30
INDUSINDBK	1248.64	415.90
BAJFINANCE	3760.50	2148.25
ADANIPORTS	363.87	271.90
POWERGRID	191.67	162.20
ULTRACEMCO	4134.23	3441.15
TCS	2091.29	1769.50
KOTAKBANK	1544.98	1152.15
TECHM	712.42	518.30
JSWSTEEL	237.04	161.20
NTPC	114.82	97.60
MARUTI	6492.00	5180.85
BAJAJ-AUTO	2874.46	2379.70
BAJAJFINSV	8075.79	4775.75
COALINDIA	191.55	140.70
INFRADEL	234.57	167.55

Weekly Expiry Most Active Nifty Call Option

Symbol	Expiry Date	Strike Price	Highest Open Interest (OI)
NIFTY	23-Apr-2020	9500	1213275
NIFTY	23-Apr-2020	9300	1040475
NIFTY	23-Apr-2020	9400	1002600

Weekly Expiry Most Active Nifty Put Option

Symbol	Expiry Date	Strike Price	Highest Open Interest (OI)
NIFTY	23-Apr-2020	9000	1725750
NIFTY	23-Apr-2020	8800	1157400
NIFTY	23-Apr-2020	8900	1143900

Securities in Ban For Trade Date 23-04-2020

NIL

Bulk Deals (BSE)

Deal Date	Scrip Name	Client Name	Deal Type	Quantity	Price
22-Apr-20	ENDURANCE	SMALLCAP WORLD FUND INC	S	3395856	566.66

Bulk Deals (NSE)

Deal Date	Scrip Name	Client Name	Deal Type	Quantity	Price
22-Apr-20	Zee Entertain. Enterp.Ltd	FLORIDA RETIREMENT SYSTEM	BUY	5109188	141.29

Note- Executed on 22nd Apr 2020. Bulk Deal Buy/Sell done by fund house is considered.

Research Analyst Registration No.

INH000002764

Contact

SMS: 'Arihant' to 56677

Website
www.arihantcapital.com
mail Id
arihant.research@arihantcapital.com

**Arihant is Forbes Asia's '200 Best under a \$Billion' Company
 'Best Emerging Commodities Broker' awarded by UTV Bloomberg**

Disclaimer: This document has been prepared by Arihant Capital Markets Limited (hereinafter called as Arihant) and its subsidiaries and associated companies. This document does not constitute an offer or solicitation for the purchase and sale of any financial instrument by Arihant. Receipt and review of this document constitutes your agreement not to circulate, redistribute, retransmit or disclose to others the contents, opinions, conclusion, or information contained herein. This document has been prepared and issued on the basis of publicly available information, internally developed data and other sources believed to be reliable. Whilst meticulous care has been taken to ensure that the facts stated are accurate and opinions given are fair and reasonable, neither the analyst nor any employee of our company is in any way is responsible for its contents and nor is its accuracy or completeness guaranteed. This document is prepared for assistance only and is not intended to be and must not alone be taken as the basis for an investment decision. All recipients of this material should before dealing and or transacting in any of the products referred to in this material make their own investigation, seek appropriate professional advice. The investments discussed in this material may not be suitable for all investors. The recipient alone shall be fully responsible/are liable for any decision taken on the basis of this material. Arihant Capital Markets Ltd (including its affiliates) or its officers, directors, personnel and employees, including persons involved in the preparation or issuance of this material may; (a) from time to time, have positions in, and buy or sell or (b) be engaged in any other transaction and earn brokerage or other compensation in the financial instruments/products discussed herein or act as advisor or lender/borrower in respect of such securities/financial instruments/products or have other potential conflict of interest with respect to any recommendation and related information and opinions. The said persons may have acted upon and/or in a manner contradictory with the information contained here and may have a position or be otherwise interested in the investment referred to in this document before its publication. The user of this report assumes the entire risk of any use made of this data/report. Arihant especially states that it has no financial liability, whatsoever, to the users of this report.

Arihant Capital Markets Ltd

#1011 Solitaire Corporate Park Building No.10 1st Floor
 Andheri Ghatkopar Link Road Chakala Andheri (E) Mumbai-400093
 T. 022-42254800. Fax: 022-42254880
www.arihantcapital.com