

To join our research group on TELEGRAM, please click on the links - <https://bit.ly/3HbUtQV> and <https://bit.ly/2YFpdbn>

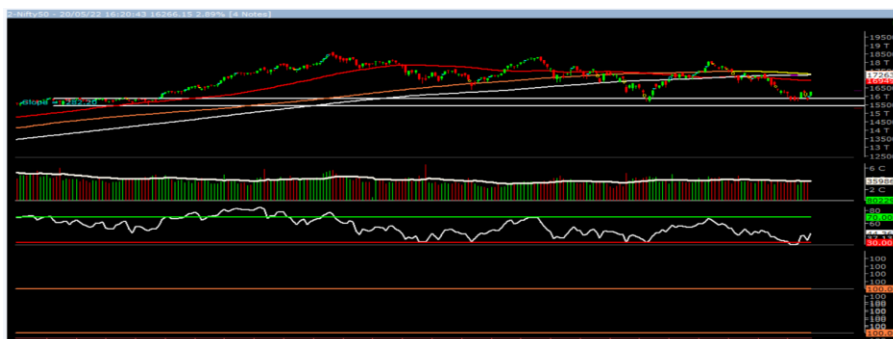
Monday, 23th May 2022

Indian Indices	Last Price	(%) Chg
NSE	16266.15	2.89
BSE	54326.39	2.91
World Indices	Last Price	(%) Chg
Dow Jones	31261.90	0.03
Nasdaq	11354.62	-0.30
Nikkei	26872.70	0.50
Hang Seng	20415.55	-1.46
FTSE	7389.98	1.19
Commodity	Last Price	(%) Chg
GOLD(\$/ounce)	1850.40	0.45
Silver (\$/Ounce)	21.85	0.79
Crude (\$/BBL)	113.07	0.46
Aluminium spot (\$/mt)	2964.00	1.98
Copper SPOT (\$/mt)	9392.00	-0.25
Zinc (\$/MT)	3699.25	-0.40
Natural gas \$/MMBtu	8.09	0.05
Currency	Last Price	(%) Chg
USD-INR	77.81	0.49
EUR-INR	82.24	0.37
Bond	Last Price	(%) Chg
India 10 Yr Bond yield	7.35	0.53

52 Wk High (A group)			52 Wk Low (A group)		
Company	Close Price	52 Wk High	Company	Close Price	52 Wk Low
ITC	279	282	CONCOR	573	554
WELSOUN	245	250	FSL	108	105
CHENNPET	343	343	FRETAIL	11	11
--	--	--	--	--	--
--	--	--	--	--	--

Source: BSE

Market Technical Outlook



Nifty opened up with a gap and momentum on the upside intensified as the day progressed which led the indices to close on a strong note. On the daily chart, we are observing a candlestick pattern that resembles a Bullish Morning star pattern. The said pattern is activated once Nifty trades and close above 16283 level. In such scenario nifty is likely to test 16360 – 16450 levels. On the downside 16150 – 16000 levels may act as support for the day.

Broadly, looking at current price action, we are of the opinion that the recent low of 15735 is the intermediate bottom. Hence, one needs to adopt cautiously positive approach at current level.

Foreign Institutional Investments (FII's) Activities

Name of Segment	Net Buyer/seller	Rs In Cr
Index Futures	Net Buy	3012.17
Stock Futures	Net Buy	2998.17
Net Future Position	Net Buy	6010.34
Index Options	Net Buy	4898.93
Stock Options	Net Buy	171.59
Net Options Position	Net Buy	5070.52
FII In cash Segment	Net Buy	-1265.41
DII In cash Segment	Net Buy	2148.95
Net Cash Position	Net Buy	883.54

Guru Call: From the expert's desk

Company	Reco Date	Reco Price (Buy on dips)	High till date	Return%
Accelya Solutions India Ltd	10-Jun-21	1203.90	1539.40	27.87%
Aditya Birla Capital Ltd	13-Aug-21	206.60	210.95	2.11%
Aditya Birla Fashion and Retail Ltd	08-Feb-21	164.40	231.65	40.91%
Alkem	08-Jul-20	2427.00	3558.90	46.64%
Apcotex Industries Limited	13-Aug-21	342.90	350.05	2.09%
Asian Paints Ltd.	30-Mar-17	1068.10	3179.50	197.68%
Astec LifeSciences Limited	09-Jul-21	1360.70	1487.00	9.28%
Avenue Supermarts Ltd.	31-Jul-17	898.55	3448.95	283.84%
Axis Bank Ltd.	10-Apr-18	519.30	827.75	59.40%
Bajaj Finserv Ltd	1-Nov-16	3416.80	13110.00	283.69%
Bajaj Holdings And Investment Ltd	19-May-16	1499.10	4060.00	170.83%
Birla Corporation Limited	28-Jun-21	1240.00	1450.80	17.00%
Britannia	12-June-20	3366.00	4010.00	19.13%
Cadila	03-Apr-20	274.00	673.70	145.88%
CAMS	08-Oct-20	1334.90	3740.65	180.22%
CDSL	17-Sep-20	485.90	1579.00	224.96%
Century Textile and Industries Ltd	25-Nov-16	750.40	1471.20	96.06%
CESC Ltd	08-Jun-21	758.20	870.90	14.86%
CG Power and Industrial Solutions Ltd	10-Feb-21	45.25	91.95	103.20%
Chola finance	25-Sep-20	238.70	600.95	151.76%
Chola Holding	23-Sep-20	391.80	711.00	81.47%
Cipla Ltd	20-Mar-17	597.30	997.00	66.92%
Colgate Palmolive	16-Sep-19	1314.00	1794.85	36.59%
Dabur India	22-Oct-19	466.00	605.00	29.83%
DFM Foods Ltd	03-Feb-21	409.05	453.80	10.94%
DLF Ltd	10-Apr-19	194.30	338.80	74.37%
Dr Reddy	04-Aug-20	4530.00	5614.60	23.94%
Emami Limited	26-Jun-19	290.35	578.50	99.24%
Finolex Cables Ltd	08-Feb-21	368.80	557.70	51.22%
Firstsource Solutions Ltd	13-Aug-21	201.10	209.35	4.10%
Fortis	14-Jul-20	127.00	253.90	99.92%
Gati Ltd	13-Aug-21	148.90	154.20	3.56%
Gillette India Limited	11-Jun-21	5847.00	6249.00	6.88%
Glaxosmithkline Pharmaceuticals Ltd	27-Aug-20	1455.75	1807.50	24.16%
Godrej Consumer Products Limited	16-Jun-20	634.00	980.70	54.68%
HDFC Asset Management Company Ltd.	19-Dec-18	1572.90	3844.00	144.39%
HDFC Bank Limited	10-Nov-16	639.00	1641.00	156.81%
HDFC Life Insurance Co Ltd	19-Jan-18	485.05	746.00	53.80%
Hero Motocorp Ltd	29-Sep-20	3174.95	3629.05	14.30%
Hindustan Unilever Ltd.	13-Nov-17	1290.70	2614.30	102.55%
Housing Development Finance Corp Ltd	19-Dec-17	1720.00	2896.00	68.37%
ICICI Bank Ltd.	06-Apr-18	278.65	679.40	143.82%
ICICI Lombard General Insurance	19-Sep-19	1154.90	1626.45	40.83%
ICICI Prudential Life Insurance Company Ltd.	28-Jun-18	375.80	660.20	75.68%
ICICI Securities Ltd	24-Sep-20	466.65	802.00	71.86%
Indusindbnk	08-Jun-20	451.00	1119.50	148.23%
Infosys Ltd.	17-Aug-17	487.60	1596.85	227.49%
INOX Leisure Ltd	13-Aug-21	327.80	332.70	1.49%
Ion Exchange (India) Ltd	01-June-21	1464.95	2947.00	101.17%
Jubilant Ingrevia Ltd	22-Jul-21	623.00	640.00	2.73%
Kotak Mahindra Bank Ltd	10-Nov-16	822.10	2049.00	149.24%
L&T Finance Holdings Ltd	03-Dec-20	84.05	113.40	34.92%

NIFTY 50 STOCKS BELOW 200SMA

SCRIP NAME	SMA 200	CLOSING (20-05-2022)
INFY	1732.33	1455.15
WIPRO	614.56	459.6
LT	1778.5	1610.1
HCLTECH	1172.96	1028.85
HINDUNILVR	2360.27	2325.95
TATASTEEL	1265.66	1170.6
SBIN	479.81	462.4
DRREDDY	4510.37	4249.1
GRASIM	1653.78	1488.35
TATAMOTORS	427.68	418
TATACONSUM	778.65	739.6
HDFC	2587.03	2201.6
HINDALCO	489.84	429.1
BPCL	400.7	332.8
ICICIBANK	739.39	709.55
HDFCBANK	1502.11	1320.95
HEROMOTOCO	2603.2	2590.15
BRITANNIA	3583.06	3450.25
ASIANPAINT	3169.83	3109.95
AXISBANK	743.94	673.1
TITAN	2328.97	2137.05
APOLLOHOSP	4648.45	3668
SHREECEM	26338.75	22001.2
INDUSINDBK	985.55	896.5
BAJFINANCE	7082.93	5769.6
BHARTIARTL	696.35	687.9
ULTRACEMCO	7188.97	6128.65
DIVISLAB	4656.86	4304.8
TCS	3638.9	3293
KOTAKBANK	1864.67	1829.15
TECHM	1473.2	1130.9
JSWSTEEL	677.93	631.1
BAJAJFINSV	16402.17	12561.7
NESTLEIND	18688.07	16862
SBILIFE	1153.23	1071.35
HDFCLIFE	639.47	544.7
--	--	--
--	--	--
--	--	--
--	--	--

Weekly Expiry Most Active Nifty Call Option

Symbol	Expiry Date	Strike Price	Highest Open Interest (Contracts)
NIFTY	26-May-2022	17000	1,56,358
NIFTY	26-May-2022	16300	97,337
NIFTY	26-May-2022	16800	94,494

Weekly Expiry Most Active Nifty Put Option

Symbol	Expiry Date	Strike Price	Highest Open Interest (Contracts)
NIFTY	26-May-2022	16000	1,58,841
NIFTY	26-May-2022	15800	1,11,699
NIFTY	26-May-2022	15500	1,03,532

Securities in Ban For Trade Date 23-05-2022

BHEL, DELTACORP, GNFC, IBULHSGFIN, PNB

Bulk Deals (NSE)

Deal Date	Scrip Name	Client Name	Deal Type	Quantity	Price
20-May-22	GODREJAGRO	GODREJ INDUSTRIES LTD	BUY	4000000	492.60
20-May-22	GODREJAGRO	V-SCIENCES INVESTMENTS PTE LTD	SELL	4000000	492.60

Bulk Deals (BSE)

Deal Date	Scrip Name	Client Name	Deal Type	Quantity	Price
20-May-22	GRNLAMIND	ASHISH DHAWAN	S	2000000	300.00
20-May-22	GRNLAMIND	HYDRA TRADING PRIVATE LIMITED	B	2000000	300.00
20-May-22	SAICAPI	UNION BANK OF INDIA	S	16010	207.05

Note- Executed on 20th May 2022. Bulk Deal Buy/Sell done by fund house is considered.

Research Analyst Registration No.

INH000002764

Contact

SMS: 'Arihant' to 56677

Website
www.arihantcapital.com
mail Id
arihant.research@arihantcapital.com

Arihant is Forbes Asia's '200 Best under a \$Billion' Company
'Best Emerging Commodities Broker' awarded by UTV Bloomberg

Disclaimer: This document has been prepared by Arihant Capital Markets Limited (hereinafter called as Arihant) and its subsidiaries and associated companies. This document does not constitute an offer or solicitation for the purchase and sale of any financial instrument by Arihant. Receipt and review of this document constitutes your agreement not to circulate, redistribute, retransmit or disclose to others the contents, opinions, conclusion, or information contained herein. This document has been prepared and issued on the basis of publicly available information, internally developed data and other sources believed to be reliable. Whilst meticulous care has been taken to ensure that the facts stated are accurate and opinions given are fair and reasonable, neither the analyst nor any employee of our company is in any way is responsible for its contents and nor is its accuracy or completeness guaranteed. This document is prepared for assistance only and is not intended to be and must not alone be taken as the basis for an investment decision. All recipients of this material should before dealing and or transacting in any of the products referred to in this material make their own investigation, seek appropriate professional advice. The investments discussed in this material may not be suitable for all investors. The recipient alone shall be fully responsible/are liable for any decision taken on the basis of this material. Arihant Capital Markets Ltd (including its affiliates) or its officers, directors, personnel and employees, including persons involved in the preparation or issuance of this material may; (a) from time to time, have positions in, and buy or sell or (b) be engaged in any other transaction and earn brokerage or other compensation in the financial instruments/products discussed herein or act as advisor or lender/borrower in respect of such securities/financial instruments/products or have other potential conflict of interest with respect to any recommendation and related information and opinions. The said persons may have acted upon and/or in a manner contradictory with the information contained here and may have a position or be otherwise interested in the investment referred to in this document before its publication. The user of this report assumes the entire risk of any use made of this data/report. Arihant especially states that it has no financial liability, whatsoever, to the users of this report.

Arihant Capital Markets Ltd

#1011 Solitaire Corporate Park Building No.10 1st Floor
 Andheri Ghatkopar Link Road Chakala Andheri (E) Mumbai-400093
 T. 022-42254800. Fax: 022-42254880
www.arihantcapital.com