

To join our research group on TELEGRAM, please click on the links - <https://bit.ly/37T17JR> and <https://bit.ly/2svtU7k>

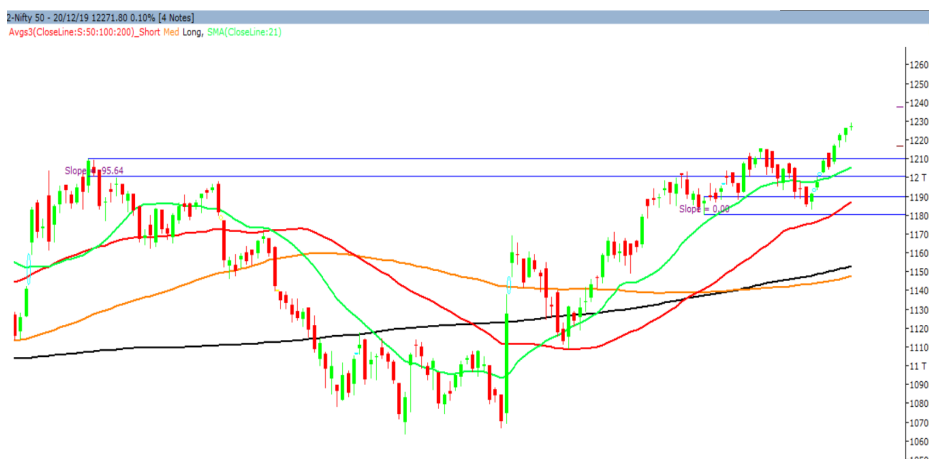
Monday, 23<sup>rd</sup> December, 2019

Indian Indices	Last Price	(%) Chg
BSE	41681.54	0.02
NSE	12271.80	0.10
World Indices		
Dow Jones	28455.09	0.28
Nasdaq	8924.96	0.42
Nikkei	28858.86	0.18
Hang Seng	27865.57	-0.02
FTSE	7582.48	0.11
Commodity	Last Price	(%) Chg
GOLD(\$/ounce)	1483.30	0.16
Silver (\$/Ounce)	17.28	0.35
Crude (\$/BBL)	65.97	-0.26
Aluminium spot (\$/mt)	1796.75	-0.26
Copper SPOT (\$/mt)	6163.50	-0.16
Lead Spot (\$/MT)	1924.25	-0.54
Natural gas \$/MMBtu	2.25	-3.18
Currency	Last Price	(%) Chg
USD-INR	71.18	0.09
EUR-INR	79.01	-0.26
Bond	Last Price	(%) Chg
India 10 Yr Bond yield	6.59	-2.19

52 Wk High (A group)			52 Wk Low (A group)		
Company	Close Price	52 Wk High	Company	Close Price	52 Wk Low
CRISIL	1794	1811	GNFC	168	168
DLF	230	232	--	--	--
ICICIBAN	545	549	--	--	--
MGL	1065	1089	--	--	--
RELIANC	1599	1617	--	--	--

Source: BSE

### Market Technical Outlook



Nifty opened higher traded in a narrow range with positive bias throughout the day to close in green. On the daily chart, we are observing three narrow range body formations with higher highs. This gives small clue that the prior trend is losing breath, hence a consolidation or a minor correction from current level cannot be ruled out. We maintain our stance that daily trend remains up, hence one should trade with positive bias.

In coming trading session if Nifty opens in the range of 12262 - 12256 then one can go long, with a stop loss of 12250 for a target 12281 – 12287 - 12297 levels.

### News for stocks

<b>Lupin</b>	Lupin has received the United States Food and Drug Administration 's approval to market its Betamethasone Dipropionate ointment(augmented), in the American market.
<b>UltraTech Cement Ltd</b>	UltraTech Cement Ltd, has emerged as the front-runner to buy the cement business of Emami Group in an all-cash deal worth INR 6,500-7,000 crore. The sale of Emami Cement Ltd has entered the final binding bid round, with Ambuja Cements Ltd, part of the Lafarge-Holcim Group, as the only other contender. (As per media reports)

### Foreign Institutional Investments (FII's) Activities

Name of Segment	Net Buyer/seller	Rs In Cr
Index Futures	Net Buy	708.48
Stock Futures	Net Buy	1179.29
<b>Net Future Position</b>	<b>Net Buy</b>	<b>1887.77</b>
Index Options	Net Buy	811.69
Stock Options	Net Buy	13.89
<b>Net Options Position</b>	<b>Net Sell</b>	<b>825.58</b>
FII In cash Segment	Net Buy	338.86
DII In cash Segment	Net Sell	-285.41
<b>Net Cash Position</b>	<b>Net Buy</b>	<b>53.45</b>

**Technical Levels for Nifty 50 Companies**

Company	Closing 20-12-2019	Buy/Sell Trigger	Resistance 1	Resistance 2	Support 1	Support 2
ADANI PORTS	372.30	373.50	376.80	381.30	369.00	365.70
ASIAN PAINT	1799.25	1801.08	1807.17	1815.08	1793.17	1787.08
AXIS BANK	739.85	741.38	745.47	751.08	735.77	731.68
BAJAJ-AUTO	3203.75	3213.72	3229.83	3255.92	3187.63	3171.52
BAJAJ FINSV	9280.05	9291.02	9322.03	9364.02	9249.03	9218.02
BAJ FINANCE	4135.60	4120.53	4160.07	4184.53	4096.07	4056.53
BHARTIARTL	453.80	453.30	460.90	468.00	446.20	438.60
BPCL	487.80	488.90	491.30	494.80	485.40	483.00
BRITANNIA	3122.25	3113.55	3164.65	3207.05	3071.15	3020.05
CIPLA	465.75	468.03	472.17	478.58	461.62	457.48
COALINDIA	200.80	199.88	203.62	206.43	197.07	193.33
DRREDDY	2863.35	2866.78	2877.82	2892.28	2852.32	2841.28
EICHERMOT	22221.15	22303.63	22516.52	22811.88	22008.27	21795.38
GAIL	119.55	118.68	120.87	122.18	117.37	115.18
GRASIM	745.60	744.87	748.78	751.97	741.68	737.77
HCLTECH	569.90	569.72	573.93	577.97	565.68	561.47
HDFC	2404.10	2402.42	2426.68	2449.27	2379.83	2355.57
HDFC BANK	1296.70	1292.12	1304.18	1311.67	1284.63	1272.57
HEROMOTOCO	2393.20	2394.40	2423.80	2454.40	2363.80	2334.40
HINDALCO	215.50	216.13	217.47	219.43	214.17	212.83
HINDUNILVR	1943.10	1944.82	1958.18	1973.27	1929.73	1916.37
ICICIBANK	546.10	544.95	550.65	555.20	540.40	534.70
INDUSINDBK	1487.95	1492.98	1503.47	1518.98	1477.47	1466.98
INFRA TEL	253.25	255.77	260.38	267.52	248.63	244.02
INFY	731.55	731.60	734.95	738.35	728.20	724.85
IOC	127.40	127.83	128.67	129.93	126.57	125.73
ITC	241.15	242.13	244.12	247.08	239.17	237.18
JSWSTEEL	264.70	264.73	266.72	268.73	262.72	260.73
KOTAK BANK	1692.70	1701.47	1715.63	1738.57	1678.53	1664.37
LT	1311.55	1315.58	1323.87	1336.18	1303.27	1294.98
M&M	530.60	532.92	537.33	544.07	526.18	521.77
MARUTI	7261.50	7264.45	7301.40	7341.30	7224.55	7187.60
NESTLEIND	14858.25	14686.10	15150.15	15442.05	14394.20	13930.15
NTPC	114.70	114.63	115.47	116.23	113.87	113.03
ONGC	125.15	125.60	126.35	127.55	124.40	123.65
POWERGRID	186.10	186.22	187.33	188.57	184.98	183.87
RELIANCE	1599.10	1604.25	1612.40	1625.70	1590.95	1582.80
SBIN	337.85	335.90	341.45	345.05	332.30	326.75
SUNPHARMA	430.30	431.68	435.32	440.33	426.67	423.03
TATAMOTORS	175.95	177.50	180.15	184.35	173.30	170.65
TATASTEEL	461.00	455.83	468.57	476.13	448.27	435.53
TCS	2222.90	2225.95	2243.65	2264.40	2205.20	2187.50
TECHM	783.35	783.02	788.03	792.72	778.33	773.32
TITAN	1201.90	1189.45	1218.90	1235.90	1172.45	1143.00
ULTRACEMCO	4120.45	4097.40	4169.80	4219.15	4048.05	3975.65
UPL	578.15	572.72	586.33	594.52	564.53	550.92
VEDL	144.25	145.98	148.77	153.28	141.47	138.68
WIPRO	251.80	250.97	254.63	257.47	248.13	244.47
YES BANK	51.40	51.07	53.83	56.27	48.63	45.87
ZEEL	284.05	283.93	288.07	292.08	279.92	275.78

(Source – IRIS)

**Guru Call: From the expert's desk**

Company	Reco Date	Reco Price (Buy on dips)	High till date	Return%
Aditiya Birla Capital	22-Nov-19	95.75	114.60	19.69%
Asian Paints Ltd.	30-Mar-17	1068.10	1834.80	71.78%
Avenue Supermarts Ltd.	31-Jul-17	898.55	2010.00	123.69%
Axis Bank Ltd.	10-Apr-18	519.30	827.75	59.40%
Bajaj Finance Ltd.	11-Oct-18	2271.00	4280.00	88.46%
Bajaj Finserv Ltd	1-Nov-16	3416.80	9284.75	171.74%
Bajaj Holdings And Investment Ltd	19-May-16	1499.10	3903.95	160.42%
Bandhan Bank Ltd.	19-Dec-18	556.40	650.00	16.82%
Bharat Petroleum Corporation Ltd.	23-Oct-19	531.50	549.00	3.29%
Century Textile and Industries Ltd	25-Nov-16	326.00	515.10	58.01%
Cipla Ltd	20-Mar-17	597.30	678.45	13.59%
Colgate Palmolive	16-Sep-19	1314.00	1642.60	25.01%
Container Corporation	22-Nov-19	577.00	603.00	4.51%
Dabur India	22-Oct-19	466.00	487.70	4.66%
DLF Ltd	10-Apr-19	194.30	231.20	18.99%
Emami Limited	26-Jun-19	290.35	355.40	22.40%
Godrej Industries Ltd.	12-Feb-18	550.70	657.60	19.41%
Godrej Properties Ltd.	19-Dec-18	685.30	1119.60	63.37%
Grasim Industries Ltd.	31-May-17	1132.50	1331.00	17.53%
Havells India Ltd.	8-Dec-17	525.75	806.85	53.47%
Housing Development Finance Corp Ltd	19-Dec-17	1720.00	2365.95	37.56%
HDFC Asset Management Company Ltd.	19-Dec-18	1572.90	3844.00	144.39%
HDFC Bank Limited	10-Nov-16	639.00	1287.00	101.41%
HDFC Life Insurance Co Ltd	19-Jan-18	485.05	646.40	33.26%
Hindustan Unilever Ltd.	13-Nov-17	1290.70	2190.00	69.68%
ICICI Bank Ltd.	6-Apr-18	278.65	542.80	94.80%
ICICI Prudential Life Insurance Company Ltd.	28-Jun-18	375.80	537.30	42.97%
ICICI Lombard General Insurance	19-Sep-19	1154.90	1399.75	21.20%
Infosys Ltd.	17-Aug-17	487.60	847.00	73.71%
Kansai Nerolac Paints	16-Dec-16	529.85	543.95	2.66%
Kotak Mahindra Bank Ltd	10-Nov-16	822.10	1720.00	109.22%
Mahindra & Mahindra Ltd.	5-Jun-17	709.25	993.00	40.01%
Manappuram Finance Ltd.	24-Apr-18	119.20	174.65	46.52%
Mahanagar Gas	15-Nov-19	1029.00	1064.00	3.40%
Marico Ltd.	4-Apr-18	325.00	404.00	24.31%
Nestle India Ltd.	27-Sep-18	9729.40	15146.90	55.68%
Oberoi Realty Ltd.	23-Nov-17	508.60	641.70	26.17%
Phoenix Mills Limited	7-Jul-19	655.15	797.00	21.65%
Pidilite Industries Limited	4-Oct-16	681.60	1493.50	119.12%
Prestige Estates Projects Limited	6-Jun-19	286.70	363.90	26.93%
Reliance Nippon	25-Nov-18	377.00	386.40	2.49%
Rites Ltd.	19-Dec-18	226.96	324.80	43.11%
RBL Bank	22-Nov-19	334.00	391.20	17.13%
State Bank Of India	28-Aug-18	308.00	373.80	21.36%
Shipping Corporation	22-Nov-19	64.00	65.95	3.05%
Tata Global Beverages Ltd.	29-Jun-17	149.15	303.05	103.18%
Tata Consultancy Services Ltd.	8-Jan-18	1344.60	2296.20	70.77%
Trent Ltd.	19-Dec-18	348.40	567.90	63.00%
Ultratech Cement Ltd.	19-Dec-18	4084.60	4904.95	20.08%
Voltas Ltd.	27-Mar-18	613.90	725.40	18.16%
Whirlpool Of India Ltd.	7-Dec-16	872.25	2448.00	180.65%
Zee Entertainment	22-Nov-19	345.00	362.00	4.93%

**NIFTY 50 STOCKS BELOW 200SMA**

SCRIP NAME	SMA 200	CLOSING (20-12-2019)
INFY	744.84	731.55
WIPRO	263.90	251.80
ZEEL	346.84	284.05
LT	1401.95	1311.55
ITC	268.92	241.15
GRASIM	807.44	745.60
CIPLA	508.07	465.75
M&M	599.36	530.60
HEROMOTOCO	2595.05	2393.20
IOC	144.08	127.40
ONGC	146.61	125.15
VEDL	158.76	144.25
UPL	601.88	578.15
GAIL	146.69	119.55
ADANI PORTS	384.41	372.30
POWERGRID	196.61	186.10
ULTRACEMCO	4253.59	4120.45
NTPC	125.61	114.70
YESBANK	119.89	51.40
COALINDIA	221.15	200.80
INFRA TEL	265.57	253.25

**Weekly Expiry Most Active Nifty Call Option**

Symbol	Expiry Date	Strike Price	Highest Open Interest (OI)
NIFTY	26-Dec-19	12300	2605575
NIFTY	26-Dec-19	12500	1977450
NIFTY	26-Dec-19	12400	1975050

**Weekly Expiry Most Active Nifty Put Option**

Symbol	Expiry Date	Strike Price	Highest Open Interest (OI)
NIFTY	26-Dec-19	12200	4006275
NIFTY	26-Dec-19	12000	3984300
NIFTY	26-Dec-19	11500	3500475

**Bulk Deals (NSE)**

Deal Date	Scrip Name	Client Name	Deal Type	Quantity	Price
20-Dec-19	Dish TV India Limited	HERO ENTERPRISE PARTNER VENTURES	BUY	13310000	14.27
20-Dec-19	Tata Motors DVR 'A' Ord	SBI MUTUAL FUND A/C - SBI SENSEX ETF	BUY	2490	74.65
20-Dec-19	Dish TV India Limited	IVY ICON SOLUTIONS LLP	SELL	13310000	14.27
20-Dec-19	Tata Motors DVR 'A' Ord	SBI MUTUAL FUND A/C - SBI SENSEX ETF	SELL	2792130	72.61

**Bulk Deals (BSE)**

N/A.

 Note- Executed on 20<sup>th</sup> Dec 2019. Bulk Deal Buy/Sell done by fund house is considered.

**Securities in Ban For Trade Date 23-12-2019**

YESBANK,DISHTV

Research Analyst Registration No.	Contact	Website	mail Id
INH000002764	SMS: 'Arihant' to 56677	<a href="http://www.arihantcapital.com">www.arihantcapital.com</a>	<a href="mailto:arihant.research@arihantcapital.com">arihant.research@arihantcapital.com</a>

**Arihant is Forbes Asia's '200 Best under a \$Billion' Company  
'Best Emerging Commodities Broker' awarded by UTV Bloomberg**

**Disclaimer:** This document has been prepared by Arihant Capital Markets Limited (hereinafter called as Arihant) and its subsidiaries and associated companies. This document does not constitute an offer or solicitation for the purchase and sale of any financial instrument by Arihant. Receipt and review of this document constitutes your agreement not to circulate, redistribute, retransmit or disclose to others the contents, opinions, conclusion, or information contained herein. This document has been prepared and issued on the basis of publicly available information, internally developed data and other sources believed to be reliable. Whilst meticulous care has been taken to ensure that the facts stated are accurate and opinions given are fair and reasonable, neither the analyst nor any employee of our company is in any way is responsible for its contents and nor is its accuracy or completeness guaranteed. This document is prepared for assistance only and is not intended to be and must not alone be taken as the basis for an investment decision. All recipients of this material should before dealing and or transacting in any of the products referred to in this material make their own investigation, seek appropriate professional advice. The investments discussed in this material may not be suitable for all investors. The recipient alone shall be fully responsible/are liable for any decision taken on the basis of this material. Arihant Capital Markets Ltd (including its affiliates) or its officers, directors, personnel and employees, including persons involved in the preparation or issuance of this material may; (a) from time to time, have positions in, and buy or sell or (b) be engaged in any other transaction and earn brokerage or other compensation in the financial instruments/products discussed herein or act as advisor or lender/borrower in respect of such securities/financial instruments/products or have other potential conflict of interest with respect to any recommendation and related information and opinions. The said persons may have acted upon and/or in a manner contradictory with the information contained here and may have a position or be otherwise interested in the investment referred to in this document before its publication. The user of this report assumes the entire risk of any use made of this data/report. Arihant especially states that it has no financial liability, whatsoever, to the users of this report.

**Arihant Capital Markets Ltd**

#1011 Solitaire Corporate Park Building No.10 1<sup>st</sup> Floor  
 Andheri Ghatkopar Link Road Chakala Andheri (E) Mumbai-400093  
 T. 022-42254800. Fax: 022-42254880  
[www.arihantcapital.com](http://www.arihantcapital.com)