

To join our research group on TELEGRAM, please click on the links - <https://bit.ly/37T17JR> and <https://bit.ly/2svtU7k>

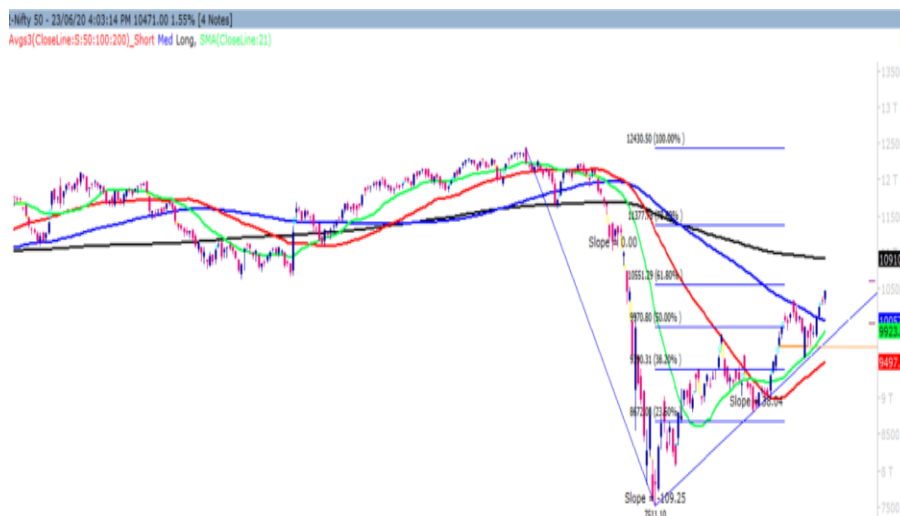
Wednesday, 24th June, 2020

Indian Indices	Last Price	(%) Chg
BSE	35430.43	1.49
NSE	10471.00	1.55
World Indices	Last Price	(%) Chg
Dow Jones	26156.10	0.50
Nasdaq	10131.37	0.74
Nikkei	22576.63	0.12
Hang Seng	24915.34	0.03
FTSE	6320.12	1.21
Commodity	Last Price	(%) Chg
GOLD(\$/ounce)	1785.80	0.21
Silver (\$/Ounce)	18.08	0.09
Crude (\$/BBL)	42.40	-0.54
Aluminium spot (\$/mt)	1597.50	0.38
Copper SPOT (\$/mt)	5911.25	0.04
Lead Spot (\$/MT)	1754.75	0.40
Natural gas \$/MMBtu	1.64	0.06
Currency	Last Price	(%) Chg
USD-INR	75.56	-0.65
EUR-INR	85.31	0.09
Bond	Last Price	(%) Chg
India 10 Yr Bond yield	5.90	0.44

52 Wk High (A group)			52 Wk Low (A group)		
Company	Close Price	52 Wk High	Company	Close Price	52 Wk Low
AUROPHA	803	816	--	--	--
INFIBEAM	64.5	64.5	--	--	--
MARKSAN	37.3	37.3	--	--	--
NETWORK	47.3	47.3	--	--	--
TV18	39.6	40.3	--	--	--

Source: BSE

Market Technical Outlook



Nifty opened higher traded with choppiness but momentum on the upside intensified as the day progressed which led the Nifty to close near days high. On the daily chart, we are observing that prices have convincingly closed above the 100-days SMA (10057) for three consecutive trading sessions. This suggests that upside momentum is likely to continue. In coming trading session, if Nifty trades above 10500 level then it may test 10600 – 10750 levels. On the downside, 10380 – 10250 levels may act as support for the day.

We maintain our stance that the current price action, is heading towards 10551 (50% Fibonacci levels of previous fall) – 10917 (200-days SMA) levels (Shown above in the graph) in couple of days.

News for stocks

--	--
--	--

Foreign Institutional Investments (FII's) Activities

Name of Segment	Net Buyer/seller	Rs In Cr
Index Futures	Net Sell	-114.70
Stock Futures	Net Buy	116.47
Net Future Position	Net Buy	1.77
Index Options	Net Sell	-319.72
Stock Options	Net Buy	201.28
Net Options Position	Net Sell	-118.44
FII In cash Segment	Net Buy	168.96
DII In cash Segment	Net Buy	454.48
Net Cash Position	Net Buy	623.44

Guru Call: From the expert's desk

Company	Reco Date	Reco Price (Buy on dips)	High till date	Return%
Aditiya Birla Capital	22-Nov-19	95.75	115.35	20.47%
Asian Paints Ltd.	30-Mar-17	1068.10	1916.70	79.45%
Avenue Supermarts Ltd.	31-Jul-17	898.55	2560.00	184.90%
Axis Bank Ltd.	10-Apr-18	519.30	827.75	59.40%
Bajaj Finance Ltd.	11-Oct-18	2271.00	4923.40	116.79%
Bajaj Finserv Ltd	1-Nov-16	3416.80	9950.00	191.21%
Bajaj Holdings And Investment Ltd	19-May-16	1499.10	3950.00	163.49%
Bandhan Bank Ltd.	19-Dec-18	556.40	650.00	16.82%
Bharat Petroleum Corporation Ltd.	23-Oct-19	531.50	549.00	3.29%
Century Textile and Industries Ltd	25-Nov-16	326.00	656.90	101.50%
Cipla Ltd	20-Mar-17	597.30	678.45	13.59%
Colgate Palmolive	16-Sep-19	1314.00	1642.60	25.01%
Container Corporation	22-Nov-19	577.00	603.00	4.51%
Dabur India	22-Oct-19	466.00	525.00	12.66%
DLF Ltd	10-Apr-19	194.30	265.90	36.85%
Emami Limited	26-Jun-19	290.35	357.70	23.20%
Godrej Industries Ltd.	12-Feb-18	550.70	657.60	19.41%
Godrej Properties Ltd.	19-Dec-18	685.30	1189.25	73.54%
Grasim Industries Ltd.	31-May-17	1132.50	1331.00	17.53%
Havells India Ltd.	8-Dec-17	525.75	806.85	53.47%
Housing Development Finance Corp Ltd	19-Dec-17	1720.00	2499.90	45.34%
HDFC Asset Management Company Ltd.	19-Dec-18	1572.90	3844.00	144.39%
HDFC Bank Limited	10-Nov-16	639.00	1305.50	104.30%
HDFC Life Insurance Co Ltd	19-Jan-18	485.05	646.40	33.26%
Hindustan Unilever Ltd.	13-Nov-17	1290.70	2308.20	78.83%
ICICI Bank Ltd.	6-Apr-18	278.65	552.20	98.17%
ICICI Prudential Life Insurance Company Ltd.	28-Jun-18	375.80	537.30	42.97%
ICICI Lombard General Insurance	19-Sep-19	1154.90	1440.40	24.72%
Infosys Ltd.	17-Aug-17	487.60	847.00	73.71%
Kansai Nerolac Paints	16-Dec-19	529.85	551.00	3.99%
Kotak Mahindra Bank Ltd	10-Nov-16	822.10	1740.00	111.65%
Mahindra & Mahindra Ltd.	5-Jun-17	709.25	993.00	40.01%
Manappuram Finance Ltd.	24-Apr-18	119.20	194.80	63.42%
Mahanagar Gas	15-Nov-19	1029.00	1246.20	21.11%
Marico Ltd.	4-Apr-18	325.00	404.00	24.31%
Nestle India Ltd.	27-Sep-18	9729.40	16835.15	73.03%
Oberoi Realty Ltd.	23-Nov-17	508.60	641.70	26.17%
Phoenix Mills Limited	7-Jul-19	655.15	979.00	49.43%
Pidilite Industries Limited	4-Oct-16	681.60	1661.00	143.69%
Prestige Estates Projects Limited	6-Jun-19	286.70	426.00	48.59%
Nam-India	25-Nov-18	377.00	452.90	20.13%
Rites Ltd.	19-Dec-18	226.96	331.00	45.84%
RBL Bank	22-Nov-19	334.00	391.20	17.13%
State Bank Of India	28-Aug-18	308.00	373.80	21.36%
Shipping Corporation	22-Nov-19	64.00	65.95	3.05%
Tata Chemicals Limited	24-Dec-19	296.89	339.70	14.42%
Tata Consumer	29-Jun-17	149.15	408.00	173.55%
Tata Consultancy Services Ltd.	8-Jan-18	1344.60	2296.20	70.77%
Trent Ltd.	19-Dec-18	348.40	794.00	127.90%
Ultratech Cement Ltd.	19-Dec-18	4084.60	4904.95	20.08%
Voltas Ltd.	27-Mar-18	613.90	741.00	20.70%
Whirlpool Of India Ltd.	7-Dec-16	872.25	2555.00	192.92%
Zee Entertainment	22-Nov-19	345.00	362.00	4.93%

Technical Levels for Nifty 50 Companies

Company	Closing 23-06-2020	Buy/Sell Trigger	Resistance 1	Resistance 2	Support 1	Support 2
ADANI PORTS	355.65	353.20	359.65	363.65	349.20	342.75
ASIAN PAINT	1683.90	1671.30	1701.60	1719.30	1653.60	1623.30
AXIS BANK	443.65	439.68	448.97	454.28	434.37	425.08
BAJAJ AUTO	2862.15	2872.40	2899.85	2937.55	2834.70	2807.25
BAJAJ FINSV	6319.65	6264.15	6437.50	6555.35	6146.30	5972.95
BAJAJ FINANCE	3025.50	2989.25	3145.50	3265.50	2869.25	2713.00
BHARTIARTL	578.80	579.25	584.15	589.50	573.90	569.00
BPCL	392.00	389.05	395.85	399.70	385.20	378.40
BRITANNIA	3467.05	3466.08	3505.87	3544.68	3427.27	3387.48
CIPLA	659.80	663.07	670.73	681.67	652.13	644.47
COALINDIA	143.85	144.60	146.00	148.15	142.45	141.05
DRREDDY	4108.85	4092.98	4145.87	4182.88	4055.97	4003.08
EICHERMOT	17891.15	17833.72	18057.43	18223.72	17667.43	17443.72
GAIL	99.25	99.10	100.40	101.55	97.95	96.65
GRASIM	622.35	623.25	633.45	644.55	612.15	601.95
HCLTECH	580.25	575.83	587.92	595.58	568.17	556.08
HDFC	1838.10	1828.72	1854.38	1870.67	1812.43	1786.77
HDFC BANK	1042.30	1034.62	1052.68	1063.07	1024.23	1006.17
HEROMOTOCO	2418.85	2423.13	2440.67	2462.48	2401.32	2383.78
HINDALCO	158.35	156.15	161.70	165.05	152.80	147.25
HINDUNILVR	2155.95	2143.18	2184.77	2213.58	2114.37	2072.78
ICICIBANK	376.15	372.88	381.57	386.98	367.47	358.78
INDUSINDBK	520.40	513.87	530.53	540.67	503.73	487.07
INFRA TEL	232.35	229.98	235.77	239.18	226.57	220.78
INFY	720.65	712.42	732.73	744.82	700.33	680.02
IOC	89.35	89.33	90.52	91.68	88.17	86.98
ITC	185.85	186.03	187.32	188.78	184.57	183.28
JSW STEEL	201.65	201.22	204.33	207.02	198.53	195.42
KOTAK BANK	1389.90	1378.55	1407.05	1424.20	1361.40	1332.90
LT	967.60	948.87	988.73	1009.87	927.73	887.87
M&M	516.40	511.30	525.00	533.60	502.70	489.00
MARUTI	5886.50	5918.75	5974.95	6063.40	5830.30	5774.10
NESTLE IND	16548.45	16492.83	16775.61	17002.78	16265.66	15982.88
NTPC	100.75	98.97	102.93	105.12	96.78	92.82
ONGC	85.65	85.52	86.63	87.62	84.53	83.42
POWERGRID	187.45	185.17	191.28	195.12	181.33	175.22
RELIANCE	1720.90	1733.58	1751.07	1781.23	1703.42	1685.93
SBIN	192.45	191.13	194.42	196.38	189.17	185.88
SHREECEM	22756.25	22583.12	23116.23	23476.22	22223.13	21690.02
SUN PHARMA	500.45	497.65	505.80	511.15	492.30	484.15
TATAMOTORS	104.40	104.10	106.30	108.20	102.20	100.00
TATA STEEL	332.00	330.55	334.95	337.90	327.60	323.20
TCS	2035.30	2029.77	2049.53	2063.77	2015.53	1995.77
TECHM	558.80	554.48	564.42	570.03	548.87	538.93
TITAN	999.25	996.25	1011.00	1022.75	984.50	969.75
ULTRACEMCO	3942.80	3910.15	3986.65	4030.50	3866.30	3789.80
UPL	463.10	461.65	470.55	478.00	454.20	445.30
VEDL	110.00	110.32	111.58	113.17	108.73	107.47
WIPRO	220.60	218.63	224.27	227.93	214.97	209.33
ZEEL	181.95	181.63	187.22	192.48	176.37	170.78

NIFTY 50 STOCKS BELOW 200SMA

SCRIP NAME	SMA 200	CLOSING (23-06-2020)
WIPRO	227.36	220.60
ZEEL	237.00	181.95
LT	1181.14	967.60
ITC	216.23	185.85
TATASTEEL	368.30	332.00
SBIN	263.65	192.45
GRASIM	672.56	622.35
TATAMOTORS	131.96	104.40
HDFC	2061.35	1838.10
HINDALCO	169.03	158.35
BPCL	426.97	392.00
ICICIBANK	440.17	376.15
HDFCBANK	1125.80	1042.30
ASIANPAINT	1725.15	1683.90
IOC	111.77	89.35
AXISBANK	610.32	443.65
ONGC	106.92	85.65
TITAN	1114.37	999.25
VEDL	124.63	110.00
UPL	500.76	463.10
GAIL	111.74	99.25
EICHERMOT	18237.14	17891.15
INDUSINDBK	1040.94	520.40
BAJFINANCE	3520.00	3025.50
ULTRACEMCO	3978.89	3942.80
TCS	2049.92	2035.30
KOTAKBANK	1494.82	1389.90
TECHM	684.07	558.80
JSWSTEEL	223.45	201.65
NTPC	107.75	100.75
MARUTI	6344.45	5886.50
BAJAJFINSV	7538.22	6319.65
COALINDIA	174.81	143.85

Bulk Deals (NSE)

Deal Date	Scrip Name	Client Name	Deal Type	Quantity	Price
23-Jun-20	Mahindra CIE Automative	PARTICIPACIONES INTERNACIONALES AUTOMETAL DOS SOCIEDAD LIMITADA	BUY	5232000	120.01
23-Jun-20	Mahindra CIE Automative	SUNDARAM MUTUAL FUND	SELL	4300000	120.00
23-Jun-20	Strides Pharma	LIFECCELL INTERNATIONAL PRIVATE LIMITED	SELL	960000	450.08
23-Jun-20	Tourism Finance Corp	BEACON TRUSTEESHIP LIMITED	SELL	557271	37.65

Bulk Deals (BSE)

Deal Date	Scrip Name	Client Name	Deal Type	Quantity	Price
23-Jun-20	SEQUENT	AGNUS HOLDINGS PRIVATE LIMITED	B	5439365	86.00
23-Jun-20	SIEMENS	SIEMENS INTERNATIONAL HOLDING B V	B	169882943	1,073.50
23-Jun-20	SIEMENS	SIEMENS AKTIENGESELLSCHAFT	S	169882943	1,073.50

Note- Executed on 23rd Jun 2020. Bulk Deal Buy/Sell done by fund house is considered.

Weekly Expiry Most Active Nifty Call Option

Symbol	Expiry Date	Strike Price	Highest Open Interest (OI)
NIFTY	25-Jun-2020	10500	3616275
NIFTY	25-Jun-2020	11000	3096150
NIFTY	25-Jun-2020	10600	2584800

Weekly Expiry Most Active Nifty Put Option

Symbol	Expiry Date	Strike Price	Highest Open Interest (OI)
NIFTY	25-Jun-2020	10000	4641150
NIFTY	25-Jun-2020	9500	3503175
NIFTY	25-Jun-2020	9900	3482025

Securities in Ban For Trade Date 24-06-2020

CENTURYTEX, JUSTDIAL, IDEA.

Research Analyst Registration No.

INH000002764

Contact

SMS: 'Arihant' to 56677

Website
www.arihantcapital.com
mail Id
arihant.research@arihantcapital.com

Arihant is Forbes Asia's '200 Best under a \$Billion' Company
'Best Emerging Commodities Broker' awarded by UTV Bloomberg

Disclaimer: This document has been prepared by Arihant Capital Markets Limited (hereinafter called as Arihant) and its subsidiaries and associated companies. This document does not constitute an offer or solicitation for the purchase and sale of any financial instrument by Arihant. Receipt and review of this document constitutes your agreement not to circulate, redistribute, retransmit or disclose to others the contents, opinions, conclusion, or information contained herein. This document has been prepared and issued on the basis of publicly available information, internally developed data and other sources believed to be reliable. Whilst meticulous care has been taken to ensure that the facts stated are accurate and opinions given are fair and reasonable, neither the analyst nor any employee of our company is in any way is responsible for its contents and nor is its accuracy or completeness guaranteed. This document is prepared for assistance only and is not intended to be and must not alone be taken as the basis for an investment decision. All recipients of this material should before dealing and or transacting in any of the products referred to in this material make their own investigation, seek appropriate professional advice. The investments discussed in this material may not be suitable for all investors. The recipient alone shall be fully responsible/are liable for any decision taken on the basis of this material. Arihant Capital Markets Ltd (including its affiliates) or its officers, directors, personnel and employees, including persons involved in the preparation or issuance of this material may; (a) from time to time, have positions in, and buy or sell or (b) be engaged in any other transaction and earn brokerage or other compensation in the financial instruments/products discussed herein or act as advisor or lender/borrower in respect of such securities/financial instruments/products or have other potential conflict of interest with respect to any recommendation and related information and opinions. The said persons may have acted upon and/or in a manner contradictory with the information contained here and may have a position or be otherwise interested in the investment referred to in this document before its publication. The user of this report assumes the entire risk of any use made of this data/report. Arihant especially states that it has no financial liability, whatsoever, to the users of this report.

Arihant Capital Markets Ltd

#1011 Solitaire Corporate Park Building No.10 1st Floor
 Andheri Ghatkopar Link Road Chakala Andheri (E) Mumbai-400093
 T. 022-42254800. Fax: 022-42254880
www.arihantcapital.com