

To join our research group on TELEGRAM, please click on the links - <https://bit.ly/2Rt4NyS> and <https://bit.ly/3ciqvDn>

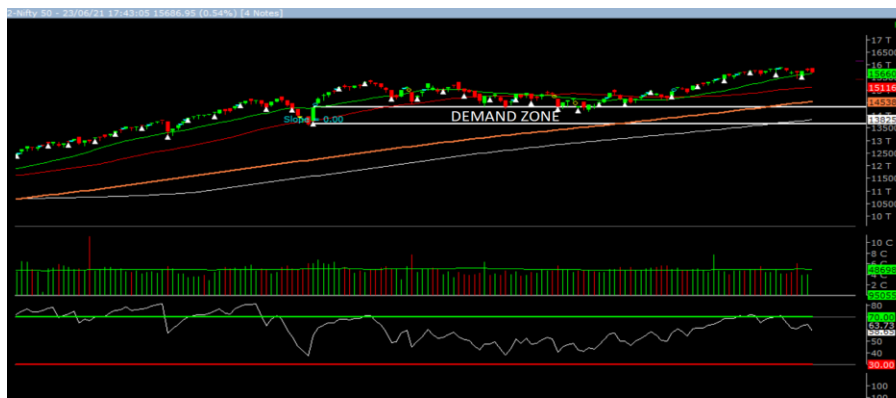
Thursday, 24th June, 2021

Indian Indices	Last Price	(%) Chg
NSE	15686.95	-0.54
BSE	52306.08	-0.54
World Indices	Last Price	(%) Chg
Dow Jones	33874.24	-0.21
Nasdaq	14271.73	0.13
Nikkei	28920.12	0.16
Hang Seng	28920.15	0.36
FTSE	7074.06	-0.22
Commodity	Last Price	(%) Chg
GOLD(\$/ounce)	1775.10	-0.47
Silver (\$/Ounce)	25.93	-0.71
Crude (\$/BBL)	75.19	0.00
Aluminium spot (\$/mt)	2414.00	-0.81
Copper SPOT (\$/mt)	9372.50	-1.20
Lead Spot (\$/MT)	2181.00	-0.37
Natural gas \$/MMBtu	3.31	-0.63
Currency	Last Price	(%) Chg
USD-INR	74.32	-0.06
EUR-INR	88.77	0.32
Bond	Last Price	(%) Chg
India 10 Yr Bond yield	6.01	-0.10

52 Wk High (A group)			52 Wk Low (A group)		
Company	Close Price	52 Wk High	Company	Close Price	52 Wk Low
ABB	1810	1850	--	--	--
CENTURY	602	619	--	--	--
CRISIL	2872	2955	--	--	--
BFUTILITI	515	524	--	--	--
GMRINFRA	32	33	--	--	--

Source: BSE

Market Technical Outlook



Nifty, opened higher but was unable to sustain the opening gains and selling intensified as the day progressed which led nifty to close in red. On the daily chart we are observing two narrow range body formations which suggest that markets are cautiously positive at current level. In coming trading session if Nifty for first hour trades 15785 level then it may test 15900 - 16000 levels. On the downside, 15550 - 15480 levels may act as support for the day.

We still maintain our stance that stock specific activity is likely to continue in small and Mid-cap stocks.

Foreign Institutional Investments (FII's) Activities

Name of Segment	Net Buyer/seller	Rs In Cr
Index Futures	Net Buy	372.30
Stock Futures	Net Buy	478.98
Net Future Position	Net Buy	851.41
Index Options	Net Buy	3122.03
Stock Options	Net Sell	-121.72
Net Options Position	Net Buy	3000.31
FII In cash Segment	Net Buy	3156.53
DII In cash Segment	Net Buy	1317.20
Net Cash Position	Net Buy	4473.73

Guru Call: From the expert's desk				
Company	Reco Date	Reco Price (Buy on dips)	High till date	Return%
Aarti drugs	21-Aug-20	783.00	1026.95	31.16%
Aditya Birla Fashion and Retail Ltd	08-Feb-21	164.40	172.25	4.77%
Aegis Logistics	11-Sep-20	204.05	318.95	56.31%
Ajanta Pharma	04-Aug-20	1661.05	1878.00	13.06%
Alkem	08-Jul-20	2427.00	3551.50	46.33%
Asian Paints Ltd.	30-Mar-17	1068.10	2873.45	169.02%
Avenue Supermarts Ltd.	31-Jul-17	898.55	3242.00	260.80%
Axis Bank Ltd.	10-Apr-18	519.30	827.75	59.40%
Bajaj Consumer Care Ltd	03-Feb-21	255.80	284.00	11.02%
Bajaj Finance Ltd.	11-Oct-18	2271.00	5822.20	156.37%
Bajaj Finserv Ltd	1-Nov-16	3416.80	10579.00	209.62%
Bajaj Holdings And Investment Ltd	19-May-16	1499.10	3950.00	163.49%
Bajaj-Auto	12-Jun-20	2782.00	4361.40	56.77%
Bandhan Bank Ltd.	19-Dec-18	556.40	650.00	16.82%
Berger Paints India Ltd	07-Dec-20	672.20	822.95	22.43%
Bharti Airtel Limited	03-Dec-20	479.90	623.00	29.82%
Britannia	12-June-20	3366.00	4010.00	19.13%
Cadila	03-Apr-20	274.00	509.20	85.84%
CAMS	08-Oct-20	1334.90	2023.30	51.57%
CDSL	17-Sep-20	485.90	592.90	22.02%
Ceat Limited	28-Jan-21	1541.05	1763.00	14.40%
Century Textile and Industries Ltd	25-Nov-16	326.00	656.90	101.50%
CG Power and Industrial Solutions Ltd	10-Feb-21	45.25	54.70	20.88%
Chola finance	25-Sep-20	238.70	550.75	130.73%
Chola Holding	23-Sep-20	391.80	607.00	54.93%
Cipla Ltd	20-Mar-17	597.30	878.90	47.15%
Colgate Palmolive	16-Sep-19	1314.00	1676.00	27.55%
Crompton Greaves Consumer	11-Jun-20	225.00	456.00	102.67%
Dabur India	22-Oct-19	466.00	552.55	18.57%
DFM Foods Ltd	03-Feb-21	409.05	429.60	5.02%
Divislab	04-Aug-20	2641.00	3914.95	48.24%
DLF Ltd	10-Apr-19	194.30	328.20	68.91%
Dr Reddy	04-Aug-20	4530.00	5512.65	21.69%
Emami Limited	26-Jun-19	290.35	519.95	79.08%
Finolex Cables Ltd	08-Feb-21	368.80	410.00	11.17%
Fortis	14-Jul-20	127.00	182.10	43.39%
Galaxy Surface	01-Jul-20	1557.00	2380.90	52.92%
Glaxosmithkline Pharmaceuticals Ltd	27-Aug-20	1455.75	1807.50	24.16%
Godrej Consumer Products Limited	16-Jun-20	634.00	808.35	27.50%
Godrej Industries Ltd.	12-Feb-18	550.70	657.60	19.41%
Godrej Properties Ltd	04-Dec-20	1200.30	1546.00	28.80%
HDFC Asset Management Company Ltd.	19-Dec-18	1572.90	3844.00	144.39%
HDFC Bank Limited	10-Nov-16	639.00	1641.00	156.81%
HDFC Life Insurance Co Ltd	19-Jan-18	485.05	731.00	50.71%
Hero Motocorp Ltd	29-Sep-20	3174.95	3629.05	14.30%
Hindustan Unilever Ltd.	13-Nov-17	1290.70	2614.30	102.55%
Housing Development Finance Corp Ltd	19-Dec-17	1720.00	2896.00	68.37%
ICICI Bank Ltd.	06-Apr-18	278.65	679.40	143.82%
ICICI Lombard General Insurance	19-Sep-19	1154.90	1626.45	40.83%
ICICI Prudential Life Insurance Company Ltd.	28-Jun-18	375.80	537.90	43.13%
ICICI Securities Ltd	24-Sep-20	466.65	498.80	6.89%

Guru Call: From the expert's desk

Company	Reco Date	Reco Price (Buy on dips)	High till date	Return%
Indusindbnk	08-Jun-20	451.00	1096.50	143.13%
Infosys Ltd.	17-Aug-17	487.60	1392.80	185.64%
Ipca Lab	11-Aug-20	2099.00	2460.00	17.20%
Jk Cement	19-Jun-20	1378.00	2915.00	111.54%
JK Lakshmi Cement	03-Jul-20	276.00	390.00	41.30%
Justdial	07-Oct-20	385.60	766.00	98.65%
Jyoti lab	05-Aug-20	132.90	166.00	24.91%
Kansai Nerolac Paints	16-Dec-19	529.85	680.00	28.34%
Kotak Mahindra Bank Ltd	10-Nov-16	822.10	2049.00	149.24%
L&T Finance Holdings Ltd	03-Dec-20	84.05	105.20	25.16%
LIC Housing Finance Limited	06-Jan-21	408.30	487.40	19.37%
Mahanagar Gas	15-Nov-19	1029.00	1246.20	21.11%
Mahindra & Mahindra Fin. Services Ltd.	08-Dec-20	175.25	224.30	27.99%
Mahindra & Mahindra Ltd.	05-Jun-17	709.25	993.00	40.01%
Manappuram Finance Ltd.	24-Apr-18	119.20	194.80	63.42%
Marico Ltd.	04-Apr-18	325.00	433.95	33.52%
Maruti Suzuki India Ltd	13-Aug-20	5988.85	8329.00	39.08%
Nam-India	25-Nov-18	377.00	452.90	20.13%
Nestle India Ltd.	27-Sep-18	9729.40	18844.00	93.68%
Oberoi Realty Ltd.	23-Nov-17	508.60	641.70	26.17%
PEL	02-Sep-20	1246.25	1931.95	55.02%
Pfizer	22-Jul-20	4150.00	5900.00	42.17%
Phoenix Mills Limited	07-Jul-19	655.15	979.00	49.43%
Pidilite Industries Limited	04-Oct-16	681.60	1842.00	170.25%
Polycab India Ltd	06-Jan-21	1176.10	1364.00	15.98%
Raymond	25-Sep-20	263.55	382.65	45.19%
RBL Bank	25-Sep-20	164.95	274.30	66.29%
Reliance	22-Apr-20	1351.00	2369.35	75.38%
Rites Ltd.	19-Dec-18	226.96	331.00	45.84%
SBI Card	16-Jul-20	719.00	1095.25	52.33%
SBI Life	20-May-20	715.00	954.50	33.50%
State Bank of India	03-Feb-21	335.95	427.70	27.31%
Sun Pharma	07-Aug-20	525.00	654.40	24.65%
Suprajit Engineering Ltd.	08-Feb-21	244.30	285.05	16.68%
Syngene	24-Sep-20	565.70	644.55	13.94%
Tata Chemicals Limited	24-Dec-19	296.89	638.90	115.20%
Tata Consultancy Services Ltd.	08-Jan-18	1344.60	3339.80	148.39%
Tata Consumer	29-Jun-17	149.15	645.70	332.92%
Trent Ltd.	19-Dec-18	348.40	844.90	142.51%
Ultratech Cement Ltd.	19-Dec-18	4084.60	6589.00	61.31%
Voltas Ltd.	27-Mar-18	613.90	1132.00	84.39%
Whirlpool Of India Ltd.	07-Dec-16	872.25	2787.00	219.52%
Zee Entertainment	22-Nov-19	345.00	362.00	4.93%

NIFTY 50 STOCKS BELOW 200SMA

SCRIP NAME	SMA 200	CLOSING (23-06-2021)
HEROMOTOCO	3093.96	2928.35
KOTAKBANK	1737.76	1736.7
--	--	--
--	--	--
--	--	--
--	--	--
--	--	--
--	--	--

PCG PORTFOLIO

Company	Reco Date	Reco Price (Buy on dips)	High till date	Return%
Ajanta Pharma Ltd.	16-Sep-20	1526.10	1655.80	8.50%
Alkem Laboratories Ltd.	16-Sep-20	2823.80	2987.90	5.81%
Biocon Ltd.	16-Sep-20	438.65	478.00	8.97%
Cipla Ltd.	16-Sep-20	752.60	829.00	10.15%
Fine Organic Industries Ltd.	16-Sep-20	3070.95	3095.95	0.81%
Hatsun Agro Products Ltd.	16-Sep-20	840.15	868.00	3.31%
P I Industries Ltd.	16-Sep-20	2052.80	2080.00	1.33%
Reliance Industries Ltd.	16-Sep-20	2324.55	2336.00	0.49%
Infosys Ltd.	18-Sep-20	1002.15	1154.30	15.18%
Central Depository Services (India) Ltd	23-Sep-20	479.60	506.00	5.50%
Larsen & Toubro Infotech Ltd	23-Sep-20	2448.45	3512.70	43.47%
Divi's Laboratories Ltd	28-Sep-20	3097.15	3269.90	5.58%
Poly Medicure Ltd	28-Sep-20	458.10	508.80	11.07%
Coromandel International Ltd	29-Sep-20	793.25	801.90	1.09%
Coforge Ltd	01-Oct-20	2335.80	2760.00	18.16%
Tata Consultancy Services Ltd	05-Oct-20	2705.80	2885.00	6.62%
--	--	--	--	--
--	--	--	--	--
--	--	--	--	--
--	--	--	--	--

Weekly Expiry Most Active Nifty Call Option

Symbol	Expiry Date	Strike Price	Highest Open Interest (Contracts)
NIFTY	24-June-2021	15800	1,11,976
NIFTY	24-June-2021	15900	88,295
NIFTY	24-June-2021	16000	79,357

Weekly Expiry Most Active Nifty Put Option

Symbol	Expiry Date	Strike Price	Highest Open Interest (Contracts)
NIFTY	24-June-2021	15500	73,860
NIFTY	24-June-2021	15600	64,127
NIFTY	24-June-2021	15000	43,831

Securities in Ban For Trade Date 24-06-2021

IDEA, SUNTV

IPO Listing Today

Company Name: Sona BLW Precision Forgings Limited, BSE Code: 543300, NSE Symbol: SONACOMS, Issue Price: Rs 291 per share, Series: EQ

Company Name: Shyam Metals and Energy Limited, BSE Code: 543299, NSE Symbol: SHYAMMETL, Issue Price: Rs 306 per share, Series: EQ

Bulk Deals (NSE)

Deal Date	Scrip Name	Client Name	Deal Type	Quantity	Price
23-Jun-21	UFO	SHAH CHETAN RASIKLAL	BUY	350000	92.90
23-Jun-21	UFO	P 5 ASIA HOLDING INVESTMENTS (MAURITIUS) LIMITED	SELL	2134452	92.55

Bulk Deals (BSE)

Deal Date	Scrip Name	Client Name	Deal Type	Quantity	Price
23-Jun-21	NURECA	HORNBILL ORCHID INDIA FUND	B	195766	1,549.97
23-Jun-21	STARLOG	SUBRATAKUMARSAO	B	207000	11.82
23-Jun-21	STARLOG	EASTSPRING INVESTMENTS INDIA INFRASTRUCTURE	S	317431	11.43
23-Jun-21	UBL	HEINEKEN INTERNATIONAL B V	B	39644346	1,471.25
23-Jun-21	UBL	RECOVERY OFFICER I DRT II	S	39644346	1,471.25
23-Jun-21	UFO	P 5 ASIA HOLDING INVESTMENTS MAURITIUS LIMITED	S	540,000	92.40

Note- Executed on 23th June 2021. Bulk Deal Buy/Sell done by fund house is considered

Research Analyst Registration No.

Contact

Website

mail Id

INH000002764

SMS: 'Arihant' to 56677

www.arihantcapital.com

arihant.research@arihantcapital.com

**Arihant is Forbes Asia's '200 Best under a \$Billion' Company
'Best Emerging Commodities Broker' awarded by UTV Bloomberg**

Disclaimer: This document has been prepared by Arihant Capital Markets Limited (hereinafter called as Arihant) and its subsidiaries and associated companies. This document does not constitute an offer or solicitation for the purchase and sale of any financial instrument by Arihant. Receipt and review of this document constitutes your agreement not to circulate, redistribute, retransmit or disclose to others the contents, opinions, conclusion, or information contained herein. This document has been prepared and issued on the basis of publicly available information, internally developed data and other sources believed to be reliable. Whilst meticulous care has been taken to ensure that the facts stated are accurate and opinions given are fair and reasonable, neither the analyst nor any employee of our company is in any way is responsible for its contents and nor is its accuracy or completeness guaranteed. This document is prepared for assistance only and is not intended to be and must not alone be taken as the basis for an investment decision. All recipients of this material should before dealing and or transacting in any of the products referred to in this material make their own investigation, seek appropriate professional advice. The investments discussed in this material may not be suitable for all investors. The recipient alone shall be fully responsible/are liable for any decision taken on the basis of this material. Arihant Capital Markets Ltd (including its affiliates) or its officers, directors, personnel and employees, including persons involved in the preparation or issuance of this material may; (a) from time to time, have positions in, and buy or sell or (b) be engaged in any other transaction and earn brokerage or other compensation in the financial instruments/products discussed herein or act as advisor or lender/borrower in respect of such securities/financial instruments/products or have other potential conflict of interest with respect to any recommendation and related information and opinions. The said persons may have acted upon and/or in a manner contradictory with the information contained here and may have a position or be otherwise interested in the investment referred to in this document before its publication. The user of this report assumes the entire risk of any use made of this data/report. Arihant especially states that it has no financial liability, whatsoever, to the users of this report.

Arihant Capital Markets Ltd

#1011 Solitaire Corporate Park Building No.10 1st Floor
Andheri Ghatkopar Link Road Chakala Andheri (E) Mumbai-400093
T. 022-42254800. Fax: 022-42254880

www.arihantcapital.com