

To join our research group on TELEGRAM, please click on the links - <https://bit.ly/37T17JR> and <https://bit.ly/2svtU7k>

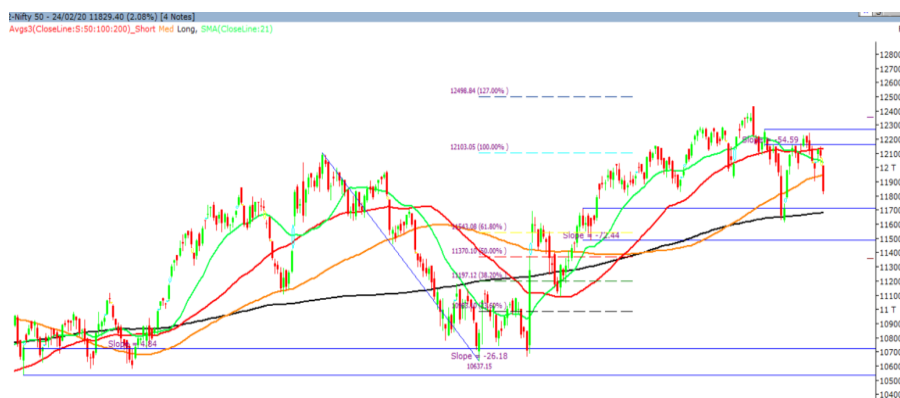
Tuesday, 25th February, 2020

Indian Indices	Last Price	(%) Chg
BSE	40363.23	-1.96
NSE	11838.60	-2.01
World Indices		
Dow Jones	27960.80	-3.56
Nasdaq	9221.28	-3.71
Nikkei	22738.67	-2.77
Hang Seng	26857.04	0.13
FTSE	7156.83	-3.34
Commodity	Last Price	(%) Chg
GOLD(\$/ounce)	1657.00	-1.17
Silver (\$/Ounce)	18.58	-1.59
Crude (\$/BBL)	56.59	0.52
Aluminium spot (\$/mt)	1703.00	0.28
Copper SPOT (\$/mt)	5720.15	0.55
Lead Spot (\$/MT)	1836.75	1.02
Natural gas \$/MMBtu	1.85	1.04
Currency	Last Price	(%) Chg
USD-INR	71.99	0.51
EUR-INR	77.91	0.76
Bond	Last Price	(%) Chg
India 10 Yr Bond yield	6.36	-0.86

52 Wk High (A group)			52 Wk Low (A group)		
Company	Close Price	52 Wk High	Company	Close Price	52 Wk Low
ABFRL	280	285	ABB	1191	1190
AJANTAP	1405	1485	CANBK	165	164
GMRINF	25.4	26.5	DBCORP	120	120
MFSL	592	609	DCBBANK	164	164
MINDTRE	1019	1060	HERO	2183	2175

Source: BSE

Market Technical Outlook



Nifty opened down with a gap in wake of weak global clues and traded with negative bias throughout the day to close in red. On the daily chart, we are observing a strong bear candle which has closed below the 100 days SMA (11948). At present Nifty has strong resistance at the downward gap area of 12071 to 12012 and the 50-days SMA of 12131. On the downside, 11780 and 11614 (prior low) are the next support levels.

We reiterate our stance that one needs to adopt cautiously positive approach at current level as stock activity is likely to continue.

News for stocks

HINDUNILVR	HUL announced its plans to set up a new subsidiary, which would be primarily engaged in manufacturing activities.
TECHM	Tech Mahindra acquired 100 percent stake in Zen3 Infosolution—a U.S.-based company specialising in AI-based solutions.
TVSMOTOR	TVS Motors informed that the outbreak of coronavirus in China has affected the supply of certain components, especially from tier two vendor companies, and will lead to a 10% fall in production of BS-VI compliant vehicles in February

Foreign Institutional Investments (FII's) Activities

Name of Segment	Net Buyer/seller	Rs In Cr
Index Futures	Net Sell	-1238.14
Stock Futures	Net Sell	-990.26
Net Future Position	Net Sell	-2228.40
Index Options	Net Buy	1797.44
Stock Options	Net Sell	-189.78
Net Options Position	Net Buy	1607.66
FII In cash Segment	Net Sell	-1160.90
DII In cash Segment	Net Buy	516.21
Net Cash Position	Net Sell	-644.69

Technical Levels for Nifty 50 Companies

Company	Closing 24-02-2020	Buy/Sell Trigger	Resistance 1	Resistance 2	Support 1	Support 2
ADANI PORTS	362.25	365.05	368.60	374.95	358.70	355.15
ASIAN PAINT	1818.95	1828.65	1843.30	1867.65	1804.30	1789.65
AXIS BANK	725.45	728.95	734.90	744.35	719.50	713.55
BAJAJ-AUTO	2980.50	3011.73	3053.42	3126.33	2938.82	2897.13
BAJAJ FINSV	9466.90	9531.73	9615.17	9763.43	9383.47	9300.03
BAJ FINANCE	4803.95	4810.38	4869.57	4935.18	4744.77	4685.58
BHARTIARTL	529.90	533.02	538.93	547.97	523.98	518.07
BPCL	464.65	467.78	472.57	480.48	459.87	455.08
BRITANNIA	3036.20	3035.40	3065.80	3095.40	3005.80	2975.40
CIPLA	430.15	431.13	435.72	441.28	425.57	420.98
COALINDIA	174.85	175.68	178.07	181.28	172.47	170.08
DRREDDY	3176.30	3199.88	3233.42	3290.53	3142.77	3109.23
EICHERMOT	17949.95	18150.02	18499.93	19049.92	17600.03	17250.12
GAIL	116.80	117.47	118.63	120.47	115.63	114.47
GRASIM	724.90	731.70	741.20	757.50	715.40	705.90
HCLTECH	595.15	598.55	605.60	616.05	588.10	581.05
HDFC	2292.30	2312.53	2344.97	2397.63	2259.87	2227.43
HDFC BANK	1209.95	1208.23	1216.47	1222.98	1201.72	1193.48
HEROMOTOCO	2184.20	2193.07	2211.13	2238.07	2166.13	2148.07
HINDALCO	179.05	181.28	184.67	190.28	175.67	172.28
HINDUNILVR	2215.15	2229.08	2248.07	2280.98	2196.17	2177.18
ICICIBANK	529.85	533.08	538.62	547.38	524.32	518.78
INDUSINDBK	1170.25	1168.77	1190.98	1211.72	1148.03	1125.82
INFRA TEL	215.95	221.82	236.13	256.32	201.63	187.32
INFY	795.85	799.87	807.58	819.32	788.13	780.42
IOC	110.55	111.27	112.38	114.22	109.43	108.32
ITC	203.00	204.08	206.37	209.73	200.72	198.43
JSWSTEEL	258.95	264.30	272.60	286.25	250.65	242.35
KOTAK BANK	1678.25	1674.77	1687.23	1696.22	1665.78	1653.32
LT	1259.70	1261.42	1270.18	1280.67	1250.93	1242.17
M&M	513.20	515.43	519.77	526.33	508.87	504.53
MARUTI	6470.40	6540.07	6640.33	6810.27	6370.13	6269.87
NESTLEIND	16337.25	16410.33	16503.67	16670.08	16243.92	16150.58
NTPC	109.70	109.77	110.68	111.67	108.78	107.87
ONGC	98.05	99.25	101.30	104.55	96.00	93.95
POWERGRID	186.10	186.78	188.52	190.93	184.37	182.63
RELIANCE	1444.95	1453.83	1468.12	1491.28	1430.67	1416.38
SBIN	322.95	325.37	328.88	334.82	319.43	315.92
SUNPHARMA	397.85	402.77	409.73	421.62	390.88	383.92
TATAMOTORS	150.65	152.05	154.50	158.35	148.20	145.75
TATASTEEL	415.45	421.22	429.08	442.72	407.58	399.72
TCS	2115.35	2133.67	2160.63	2205.92	2088.38	2061.42
TECHM	820.10	826.58	837.42	854.73	809.27	798.43
TITAN	1279.90	1290.52	1307.18	1334.47	1263.23	1246.57
ULTRACEMCO	4395.00	4390.00	4460.00	4525.00	4325.00	4255.00
UPL	573.25	578.03	585.97	598.68	565.32	557.38
VEDL	133.20	135.15	138.00	142.80	130.35	127.50
WIPRO	244.20	244.80	247.20	250.20	241.80	239.40
YES BANK	34.95	35.00	35.85	36.75	34.10	33.25
ZEEL	249.10	251.52	254.88	260.67	245.73	242.37

(Source – IRIS)

Guru Call: From the expert's desk

Company	Reco Date	Reco Price (Buy on dips)	High till date	Return%
Aditiya Birla Capital	22-Nov-19	95.75	115.35	20.47%
Asian Paints Ltd.	30-Mar-17	1068.10	1916.70	79.45%
Avenue Supermarts Ltd.	31-Jul-17	898.55	2560.00	184.90%
Axis Bank Ltd.	10-Apr-18	519.30	827.75	59.40%
Bajaj Finance Ltd.	11-Oct-18	2271.00	4923.40	116.79%
Bajaj Finserv Ltd	1-Nov-16	3416.80	9950.00	191.21%
Bajaj Holdings And Investment Ltd	19-May-16	1499.10	3950.00	163.49%
Bandhan Bank Ltd.	19-Dec-18	556.40	650.00	16.82%
Bharat Petroleum Corporation Ltd.	23-Oct-19	531.50	549.00	3.29%
Century Textile and Industries Ltd	25-Nov-16	326.00	656.90	101.50%
Cipla Ltd	20-Mar-17	597.30	678.45	13.59%
Colgate Palmolive	16-Sep-19	1314.00	1642.60	25.01%
Container Corporation	22-Nov-19	577.00	603.00	4.51%
Dabur India	22-Oct-19	466.00	523.25	12.29%
DLF Ltd	10-Apr-19	194.30	265.90	36.85%
Emami Limited	26-Jun-19	290.35	357.70	23.20%
Godrej Industries Ltd.	12-Feb-18	550.70	657.60	19.41%
Godrej Properties Ltd.	19-Dec-18	685.30	1189.25	73.54%
Grasim Industries Ltd.	31-May-17	1132.50	1331.00	17.53%
Havells India Ltd.	8-Dec-17	525.75	806.85	53.47%
Housing Development Finance Corp Ltd	19-Dec-17	1720.00	2499.90	45.34%
HDFC Asset Management Company Ltd.	19-Dec-18	1572.90	3844.00	144.39%
HDFC Bank Limited	10-Nov-16	639.00	1305.50	104.30%
HDFC Life Insurance Co Ltd	19-Jan-18	485.05	646.40	33.26%
Hindustan Unilever Ltd.	13-Nov-17	1290.70	2308.20	78.83%
ICICI Bank Ltd.	6-Apr-18	278.65	552.20	98.17%
ICICI Prudential Life Insurance Company Ltd.	28-Jun-18	375.80	537.30	42.97%
ICICI Lombard General Insurance	19-Sep-19	1154.90	1440.40	24.72%
Infosys Ltd.	17-Aug-17	487.60	847.00	73.71%
Kansai Nerolac Paints	16-Dec-19	529.85	551.00	3.99%
Kotak Mahindra Bank Ltd	10-Nov-16	822.10	1740.00	111.65%
Mahindra & Mahindra Ltd.	5-Jun-17	709.25	993.00	40.01%
Manappuram Finance Ltd.	24-Apr-18	119.20	194.80	63.42%
Mahanagar Gas	15-Nov-19	1029.00	1246.20	21.11%
Marico Ltd.	4-Apr-18	325.00	404.00	24.31%
Nestle India Ltd.	27-Sep-18	9729.40	16831.50	73.00%
Oberoi Realty Ltd.	23-Nov-17	508.60	641.70	26.17%
Phoenix Mills Limited	7-Jul-19	655.15	913.85	39.49%
Pidilite Industries Limited	4-Oct-16	681.60	1607.00	135.77%
Prestige Estates Projects Limited	6-Jun-19	286.70	426.00	48.59%
Nam-India	25-Nov-18	377.00	452.90	20.13%
Rites Ltd.	19-Dec-18	226.96	331.00	45.84%
RBL Bank	22-Nov-19	334.00	391.20	17.13%
State Bank Of India	28-Aug-18	308.00	373.80	21.36%
Shipping Corporation	22-Nov-19	64.00	65.95	3.05%
Tata Chemicals Limited	24-Dec-19	682.80	779.80	14.21%
Tata Global Beverages Ltd.	29-Jun-17	149.15	408.00	173.55%
Tata Consultancy Services Ltd.	8-Jan-18	1344.60	2296.20	70.77%
Trent Ltd.	19-Dec-18	348.40	794.00	127.90%
Ultratech Cement Ltd.	19-Dec-18	4084.60	4904.95	20.08%
Voltas Ltd.	27-Mar-18	613.90	741.00	20.70%
Whirlpool Of India Ltd.	7-Dec-16	872.25	2555.00	192.92%
Zee Entertainment	22-Nov-19	345.00	362.00	4.93%

NIFTY 50 STOCKS BELOW 200SMA

SCRIP NAME	SMA 200	CLOSING (24-02-2020)
WIPRO	258.01	244.20
ZEEL	309.28	249.10
LT	1391.28	1259.70
ITC	253.77	203.00
TATASTEEL	429.18	415.45
GRASIM	790.07	724.90
TATAMOTORS	157.73	150.65
CIPLA	489.55	430.15
M&M	572.33	513.20
HINDALCO	195.78	179.05
HDFCBANK	1210.16	1209.95
HEROMOTOCO	2539.76	2184.20
SUNPHARMA	420.32	397.85
IOC	136.17	110.55
AXISBANK	730.40	725.45
ONGC	137.40	98.05
VEDL	152.50	133.20
UPL	591.98	573.25
GAIL	135.24	116.80
EICHERMOT	19554.40	17949.95
INDUSINDBK	1409.90	1170.25
ADANI PORTS	385.88	362.25
POWERGRID	196.20	186.10
TCS	2153.93	2115.35
NTPC	122.14	109.70
MARUTI	6748.72	6470.40
YESBANK	74.24	34.95
COALINDIA	210.49	174.85
INFRA TEL	251.36	215.95

Bulk Deals (BSE)

Deal Date	Scrip Name	Client Name	Deal Type	Quantity	Price
24-Feb-20	ANUP	ABAKKUS EMERGING OPPORTUNITIES FUND - 1	B	72000	530.00
24-Feb-20	ANUP	MULTIPLES PRIVATE EQUITY FUND	S	57285	530.18
24-Feb-20	ANUP	MULTIPLES PRIVATE EQUITY FII I	S	169283	530.77

Bulk Deals (NSE)

N/A

 Note- Executed on 24th Feb 2020. Bulk Deal Buy/Sell done by fund house is considered.

Weekly Expiry Most Active Nifty Call Option

Symbol	Expiry Date	Strike Price	Highest Open Interest (OI)
NIFTY	27-Feb-20	12000	4883475
NIFTY	27-Feb-20	12200	4473300
NIFTY	27-Feb-20	12100	3783075

Weekly Expiry Most Active Nifty Put Option

Symbol	Expiry Date	Strike Price	Highest Open Interest (OI)
NIFTY	27-Feb-20	11800	3097125
NIFTY	27-Feb-20	11700	2950200
NIFTY	27-Feb-20	12000	2910150

Securities in Ban For Trade Date 25-02-2020

YESBANK

Research Analyst Registration No.	Contact	Website	mail Id
INH000002764	SMS: 'Arihant' to 56677	www.arihantcapital.com	arihant.research@arihantcapital.com

**Arihant is Forbes Asia's '200 Best under a \$Billion' Company
'Best Emerging Commodities Broker' awarded by UTV Bloomberg**

Disclaimer: This document has been prepared by Arihant Capital Markets Limited (hereinafter called as Arihant) and its subsidiaries and associated companies. This document does not constitute an offer or solicitation for the purchase and sale of any financial instrument by Arihant. Receipt and review of this document constitutes your agreement not to circulate, redistribute, retransmit or disclose to others the contents, opinions, conclusion, or information contained herein. This document has been prepared and issued on the basis of publicly available information, internally developed data and other sources believed to be reliable. Whilst meticulous care has been taken to ensure that the facts stated are accurate and opinions given are fair and reasonable, neither the analyst nor any employee of our company is in any way is responsible for its contents and nor is its accuracy or completeness guaranteed. This document is prepared for assistance only and is not intended to be and must not alone be taken as the basis for an investment decision. All recipients of this material should before dealing and or transacting in any of the products referred to in this material make their own investigation, seek appropriate professional advice. The investments discussed in this material may not be suitable for all investors. The recipient alone shall be fully responsible/are liable for any decision taken on the basis of this material. Arihant Capital Markets Ltd (including its affiliates) or its officers, directors, personnel and employees, including persons involved in the preparation or issuance of this material may; (a) from time to time, have positions in, and buy or sell or (b) be engaged in any other transaction and earn brokerage or other compensation in the financial instruments/products discussed herein or act as advisor or lender/borrower in respect of such securities/financial instruments/products or have other potential conflict of interest with respect to any recommendation and related information and opinions. The said persons may have acted upon and/or in a manner contradictory with the information contained here and may have a position or be otherwise interested in the investment referred to in this document before its publication. The user of this report assumes the entire risk of any use made of this data/report. Arihant especially states that it has no financial liability, whatsoever, to the users of this report.

Arihant Capital Markets Ltd

#1011 Solitaire Corporate Park Building No.10 1st Floor
 Andheri Ghatkopar Link Road Chakala Andheri (E) Mumbai-400093
 T. 022-42254800. Fax: 022-42254880
www.arihantcapital.com