

To join our research group on TELEGRAM, please click on the links - <https://bit.ly/37T17JR> and <https://bit.ly/2svtU7k>

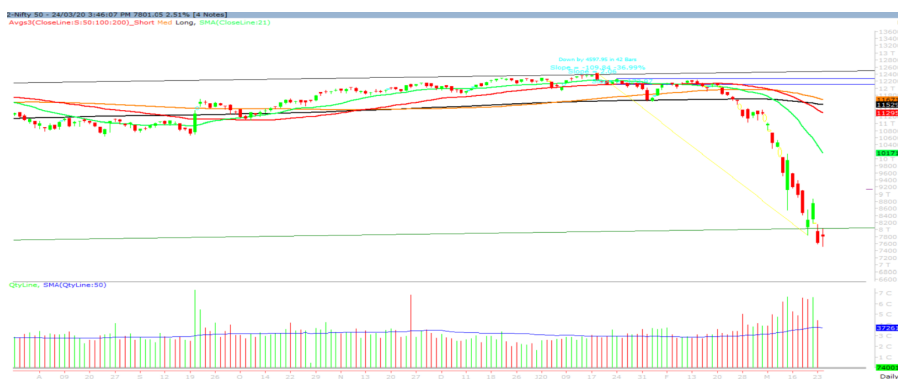
Wednesday, 25th March, 2020

Indian Indices	Last Price	(%) Chg
BSE	26674.03	2.67
NSE	7801.05	2.51
World Indices	Last Price	(%) Chg
Dow Jones	20704.91	11.37
Nasdaq	7417.86	8.12
Nikkei	19129.21	5.73
Hang Seng	23167.40	2.25
FTSE	5446.01	9.05
Commodity	Last Price	(%) Chg
GOLD(\$/ounce)	1670.00	0.55
Silver (\$/Ounce)	14.47	1.49
Crude (\$/BBL)	30.41	2.25
Aluminium spot (\$/mt)	1557.50	0.21
Copper SPOT (\$/mt)	4838.75	-0.14
Lead Spot (\$/MT)	1620.50	0.87
Natural gas \$/MMBtu	1.68	1.69
Currency	Last Price	(%) Chg
USD-INR	76.18	-0.10
EUR-INR	82.30	0.25
Bond	Last Price	(%) Chg
India 10 Yr Bond yield	6.30	-0.10

52 Wk High (A group)			52 Wk Low (A group)		
Company	Close Price	52 Wk High	Company	Close Price	52 Wk Low
--	--	--	ACC	947	942
--	--	--	AGL	82.6	80.2
--	--	--	ABFRL	169	149
--	--	--	AEGIS	116	114
--	--	--	AXIS	303	291

Source: BSE

Market Technical Outlook



Nifty opened higher, traded with extreme volatility but finally managed to close in green. On the daily chart after a steep fall we are observing a long legged “Doji” candlestick pattern which suggests that prior downtrend is losing breath. In coming trading session if Nifty trades above 8036 level then it is likely to test 8150 - 8250 levels. On the downside, 7700 – 7550 levels may act as support for the day.

We maintain our stance that one should not do any bottom fishing at current level. We advise traders and investor to stay at the sideline and wait for this dust to settle.

News for stocks

--	--
--	--

Foreign Institutional Investments (FII's) Activities

Name of Segment	Net Buyer/seller	Rs In Cr
Index Futures	Net Buy	3197.15
Stock Futures	Net Sell	-1155.59
Net Future Position	Net Buy	2041.56
Index Options	Net Buy	176.27
Stock Options	Net Sell	-118.72
Net Options Position	Net Buy	57.55
FII In cash Segment	Net Sell	-2153.35
DII In cash Segment	Net Buy	1553.66
Net Cash Position	Net Sell	-599.69

Technical Levels for Nifty 50 Companies

Company	Closing 24-03-2020	Buy/Sell Trigger	Resistance 1	Resistance 2	Support 1	Support 2
ADANI PORTS	231.75	227.7	242.8	253.85	216.65	201.55
ASIAN PAINT	1524.85	1525.37	1597.48	1670.12	1452.73	1380.62
AXIS BANK	303.15	310.55	330.1	357.05	283.6	264.05
BAJAJ-AUTO	1937.15	1927.9	2067.15	2197.15	1797.9	1658.65
BAJAJ FINSV	4497.75	4579.33	4998.42	5499.08	4078.67	3659.58
BAJFINANCE	2474.2	2382.5	2660.35	2846.5	2196.35	1918.5
BHARTIARTL	404.05	414.02	427.88	451.72	390.18	376.32
BPCL	262.85	265.95	279.9	296.95	248.9	234.95
BRITANNIA	2364.7	2308.87	2505.83	2646.97	2167.73	1970.77
CIPLA	377.45	386.58	400.62	423.78	363.42	349.38
COALINDIA	127.85	129.43	133.42	138.98	123.87	119.88
DRREDDY	2857.95	2873.02	2944.93	3031.92	2786.03	2714.12
EICHERMOT	14208.5	14214.5	14549	14889.5	13874	13539.5
GAIL	76.45	78.03	80.92	85.38	73.57	70.68
GRASIM	400.1	417	441	481.9	376.1	352.1
HCLTECH	442.05	437.58	463.32	484.58	416.32	390.58
HDFC	1505.1	1542.75	1612.05	1719	1435.8	1366.5
HDFCBANK	767.7	772.15	805.55	843.4	734.3	700.9
HEROMOTOCO	1627.05	1618.72	1762.43	1897.82	1483.33	1339.62
HINDALCO	88.75	89.52	94.03	99.32	84.23	79.72
HINDUNILVR	2027.85	2009.6	2089.2	2150.55	1948.25	1868.65
ICICIBANK	296.5	289.93	311.57	326.63	274.87	253.23
INDUSINDBK	312.35	302.63	369.72	427.08	245.27	178.18
INFRA TEL	141.95	141.25	151.5	161.05	131.7	121.45
INFY	589.8	570.98	619.97	650.13	540.82	491.83
IOC	79.7	80.45	83.25	86.8	76.9	74.1
ITC	149.7	153.6	159.8	169.9	143.5	137.3
JSWSTEEL	147.1	147.48	154.62	162.13	139.97	132.83
KOTAK BANK	1152.9	1126.33	1211.57	1270.23	1067.67	982.43
LT	707.9	711.88	751.77	795.63	668.02	628.13
M&M	269	281.1	297.8	326.6	252.3	235.6
MARUTI	4486.45	4362.15	4694.3	4902.15	4154.3	3822.15
NESTLEIND	13478.35	13189.12	14178.23	14878.12	12489.23	11500.12
NTPC	77.55	77.4	79.75	81.95	75.2	72.85
ONGC	62.5	62.43	64.77	67.03	60.17	57.83
POWERGRID	147.3	149.97	154.53	161.77	142.73	138.17
RELIANCE	943.4	936.4	977	1010.6	902.8	862.2
SBIN	183.2	182.9	192.25	201.3	173.85	164.5
SUNPHARMA	335.15	337.72	345.43	355.72	327.43	319.72
TATAMOTORS	68.55	67.85	72.2	75.85	64.2	59.85
TATASTEEL	271.9	272.05	285.5	299.1	258.45	245
TCS	1703.15	1702	1771.15	1839.15	1634	1564.85
TECHM	503.5	508.15	529.3	555.1	482.35	461.2
TITAN	816.1	798.28	875.67	935.23	738.72	661.33
ULTRACEMCO	3018.1	3074.25	3181.05	3344	2911.3	2804.5
UPL	262.05	262.85	276.2	290.35	248.7	235.35
VEDL	62.8	64.53	66.72	70.63	60.62	58.43
WIPRO	176.35	175.38	182.72	189.08	169.02	161.68
ZEEL	119.15	122.43	127.72	136.28	113.87	108.58
--	--	--	--	--	--	--

(Source – IRIS)

Guru Call: From the expert's desk				
Company	Reco Date	Reco Price (Buy on dips)	High till date	Return%
Aditiya Birla Capital	22-Nov-19	95.75	115.35	20.47%
Asian Paints Ltd.	30-Mar-17	1068.10	1916.70	79.45%
Avenue Supermarts Ltd.	31-Jul-17	898.55	2560.00	184.90%
Axis Bank Ltd.	10-Apr-18	519.30	827.75	59.40%
Bajaj Finance Ltd.	11-Oct-18	2271.00	4923.40	116.79%
Bajaj Finserv Ltd	1-Nov-16	3416.80	9950.00	191.21%
Bajaj Holdings And Investment Ltd	19-May-16	1499.10	3950.00	163.49%
Bandhan Bank Ltd.	19-Dec-18	556.40	650.00	16.82%
Bharat Petroleum Corporation Ltd.	23-Oct-19	531.50	549.00	3.29%
Century Textile and Industries Ltd	25-Nov-16	326.00	656.90	101.50%
Cipla Ltd	20-Mar-17	597.30	678.45	13.59%
Colgate Palmolive	16-Sep-19	1314.00	1642.60	25.01%
Container Corporation	22-Nov-19	577.00	603.00	4.51%
Dabur India	22-Oct-19	466.00	525.00	12.66%
DLF Ltd	10-Apr-19	194.30	265.90	36.85%
Emami Limited	26-Jun-19	290.35	357.70	23.20%
Godrej Industries Ltd.	12-Feb-18	550.70	657.60	19.41%
Godrej Properties Ltd.	19-Dec-18	685.30	1189.25	73.54%
Grasim Industries Ltd.	31-May-17	1132.50	1331.00	17.53%
Havells India Ltd.	8-Dec-17	525.75	806.85	53.47%
Housing Development Finance Corp Ltd	19-Dec-17	1720.00	2499.90	45.34%
HDFC Asset Management Company Ltd.	19-Dec-18	1572.90	3844.00	144.39%
HDFC Bank Limited	10-Nov-16	639.00	1305.50	104.30%
HDFC Life Insurance Co Ltd	19-Jan-18	485.05	646.40	33.26%
Hindustan Unilever Ltd.	13-Nov-17	1290.70	2308.20	78.83%
ICICI Bank Ltd.	6-Apr-18	278.65	552.20	98.17%
ICICI Prudential Life Insurance Company Ltd.	28-Jun-18	375.80	537.30	42.97%
ICICI Lombard General Insurance	19-Sep-19	1154.90	1440.40	24.72%
Infosys Ltd.	17-Aug-17	487.60	847.00	73.71%
Kansai Nerolac Paints	16-Dec-19	529.85	551.00	3.99%
Kotak Mahindra Bank Ltd	10-Nov-16	822.10	1740.00	111.65%
Mahindra & Mahindra Ltd.	5-Jun-17	709.25	993.00	40.01%
Manappuram Finance Ltd.	24-Apr-18	119.20	194.80	63.42%
Mahanagar Gas	15-Nov-19	1029.00	1246.20	21.11%
Marico Ltd.	4-Apr-18	325.00	404.00	24.31%
Nestle India Ltd.	27-Sep-18	9729.40	16835.15	73.03%
Oberoi Realty Ltd.	23-Nov-17	508.60	641.70	26.17%
Phoenix Mills Limited	7-Jul-19	655.15	979.00	49.43%
Pidilite Industries Limited	4-Oct-16	681.60	1661.00	143.69%
Prestige Estates Projects Limited	6-Jun-19	286.70	426.00	48.59%
Nam-India	25-Nov-18	377.00	452.90	20.13%
Rites Ltd.	19-Dec-18	226.96	331.00	45.84%
RBL Bank	22-Nov-19	334.00	391.20	17.13%
State Bank Of India	28-Aug-18	308.00	373.80	21.36%
Shipping Corporation	22-Nov-19	64.00	65.95	3.05%
Tata Chemicals Limited	24-Dec-19	296.89	339.70	14.42%
Tata Consumer	29-Jun-17	149.15	408.00	173.55%
Tata Consultancy Services Ltd.	8-Jan-18	1344.60	2296.20	70.77%
Trent Ltd.	19-Dec-18	348.40	794.00	127.90%
Ultratech Cement Ltd.	19-Dec-18	4084.60	4904.95	20.08%
Voltas Ltd.	27-Mar-18	613.90	741.00	20.70%
Whirlpool Of India Ltd.	7-Dec-16	872.25	2555.00	192.92%
Zee Entertainment	22-Nov-19	345.00	362.00	4.93%

NIFTY 50 STOCKS BELOW 200SMA

SCRIP NAME	SMA 200	CLOSING (24-03-2020)
INFY	746.82	589.80
WIPRO	249.82	176.35
RELIANCE	1361.56	943.40
ZEEL	293.31	119.15
LT	1351.60	707.90
ITC	241.86	149.70
HCLTECH	549.76	442.05
TATASTEEL	413.79	271.90
SBIN	309.51	183.20
GRASIM	763.51	400.10
TATAMOTORS	150.21	68.55
CIPLA	474.47	377.45
M&M	550.27	269.00
HDFC	2207.41	1505.10
HINDALCO	189.59	88.75
BPCL	432.93	262.85
ICICIBANK	465.19	296.50
HDFCBANK	1197.28	767.70
HEROMOTOCO	2467.91	1627.05
SUNPHARMA	415.96	335.15
BRITANNIA	2935.83	2364.70
ASIANPAINT	1667.75	1524.85
IOC	130.36	79.70
AXISBANK	711.43	303.15
ONGC	128.12	62.50
TITAN	1185.82	816.10
VEDL	145.92	62.80
UPL	570.25	262.05
GAIL	127.30	76.45
SHREECEM	20798.54	16980.00
EICHERMOT	19190.63	14208.50
INDUSINDBK	1340.88	312.35
BAJFINANCE	3863.90	2474.20
BHARTIARTL	411.63	404.05
ADANIPTS	377.47	231.75
POWERGRID	194.88	147.30
ULTRACEMCO	4239.89	3018.10
TCS	2132.29	1703.15
KOTAKBANK	1567.73	1152.90
TECHM	730.31	503.50
JSWSTEEL	246.45	147.10
NTPC	118.90	77.55
MARUTI	6648.20	4486.45
BAJAJ-AUTO	2932.71	1937.15
BAJAJFINSV	8379.03	4497.75
NESTLEIND	13798.46	13478.35
COALINDIA	201.78	127.85
INFRADEL	244.08	141.95

Weekly Expiry Most Active Nifty Call Option

Symbol	Expiry Date	Strike Price	Highest Open Interest (OI)
NIFTY	26-Mar-2020	12000	1889175
NIFTY	26-Mar-2020	10000	1757475
NIFTY	26-Mar-2020	9000	1692525

Weekly Expiry Most Active Nifty Put Option

Symbol	Expiry Date	Strike Price	Highest Open Interest (OI)
NIFTY	26-Mar-2020	7000	1684950
NIFTY	26-Mar-2020	7500	1566750
NIFTY	26-Mar-2020	8500	1498575

Securities in Ban For Trade Date 25-03-2020

ADANIENT, JINDALSTEL, JUSTDIAL.

Bulk Deals (BSE)

N.A

Bulk Deals (NSE)

Deal Date	Scrip Name	Client Name	Deal Type	Quantity	Price
24-Mar-20	IndusInd Bank Ltd.	ROUTE ONE FUND I LP	BUY	4643000	328.40
24-Mar-20	Tata Motors DVR 'A' Ord	POST OFFICE LIFE INSURANCE FUND	BUY	2809690	30.14
24-Mar-20	Thyrocare Tech Ltd	NALANDA INDIA EQUITY FUND LIMITED	BUY	1096371	498.40
24-Mar-20	The Andhra Sugars Ltd	BAJAJ FINANCE LIMITED	SELL	463685	125.69
24-Mar-20	Thyrocare Tech Ltd	HDFC MUTUAL FUND - HDFC CAPITAL BUILDER VALUE FUND	SELL	1014408	500.00

Note- Executed on 24th Mar 2020. Bulk Deal Buy/Sell done by fund house is considered.

Research Analyst Registration No.	Contact	Website	mail Id
INH000002764	SMS: 'Arihant' to 56677	www.arihantcapital.com	arihant.research@arihantcapital.com

**Arihant is Forbes Asia's '200 Best under a \$Billion' Company
'Best Emerging Commodities Broker' awarded by UTV Bloomberg**

Disclaimer: This document has been prepared by Arihant Capital Markets Limited (hereinafter called as Arihant) and its subsidiaries and associated companies. This document does not constitute an offer or solicitation for the purchase and sale of any financial instrument by Arihant. Receipt and review of this document constitutes your agreement not to circulate, redistribute, retransmit or disclose to others the contents, opinions, conclusion, or information contained herein. This document has been prepared and issued on the basis of publicly available information, internally developed data and other sources believed to be reliable. Whilst meticulous care has been taken to ensure that the facts stated are accurate and opinions given are fair and reasonable, neither the analyst nor any employee of our company is in any way is responsible for its contents and nor is its accuracy or completeness guaranteed. This document is prepared for assistance only and is not intended to be and must not alone be taken as the basis for an investment decision. All recipients of this material should before dealing and or transacting in any of the products referred to in this material make their own investigation, seek appropriate professional advice. The investments discussed in this material may not be suitable for all investors. The recipient alone shall be fully responsible/are liable for any decision taken on the basis of this material. Arihant Capital Markets Ltd (including its affiliates) or its officers, directors, personnel and employees, including persons involved in the preparation or issuance of this material may; (a) from time to time, have positions in, and buy or sell or (b) be engaged in any other transaction and earn brokerage or other compensation in the financial instruments/products discussed herein or act as advisor or lender/borrower in respect of such securities/financial instruments/products or have other potential conflict of interest with respect to any recommendation and related information and opinions. The said persons may have acted upon and/or in a manner contradictory with the information contained here and may have a position or be otherwise interested in the investment referred to in this document before its publication. The user of this report assumes the entire risk of any use made of this data/report. Arihant especially states that it has no financial liability, whatsoever, to the users of this report.

Arihant Capital Markets Ltd

#1011 Solitaire Corporate Park Building No.10 1st Floor
 Andheri Ghatkopar Link Road Chakala Andheri (E) Mumbai-400093
 T. 022-42254800. Fax: 022-42254880
www.arihantcapital.com