

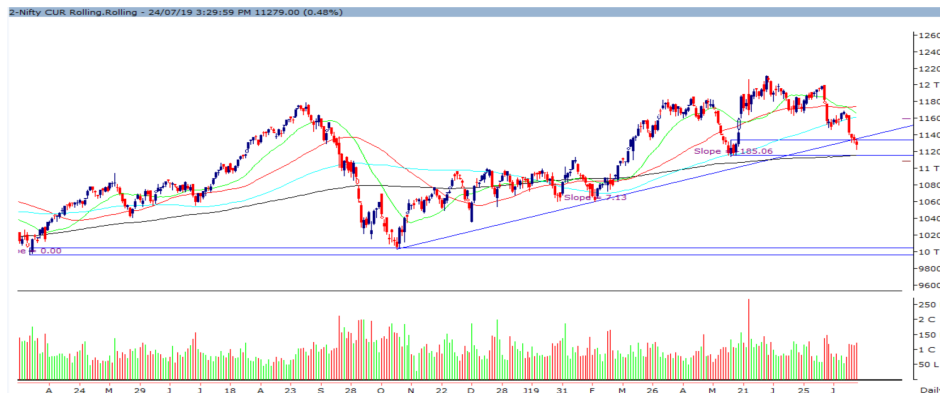
Thursday, 25th July, 2019

Indian Indices	Last Price	(%) Chg
BSE	37847.65	-0.36
NSE	11271.30	-0.53
World Indices	Last Price	(%) Chg
Dow Jones	27269.97	-0.29
Nasdaq	8321.50	0.85
Nikkei	21781.85	0.33
Hang Seng	28588.98	0.23
FTSE	7501.46	-0.73
Commodity	Last Price	(%) Chg
GOLD(\$/ounce)	1423.30	-0.02
Silver (\$/Ounce)	16.65	-0.43
Crude (\$/BBL)	63.37	0.30
Aluminium spot (\$/mt)	1825.50	0.00
Copper SPOT (\$/mt)	5992.75	-0.10
Lead Spot (\$/MT)	2075.75	0.02
Natural gas \$/MMBtu	2.23	0.46
Currency	Last Price	(%) Chg
USD-INR	69.00	0.04
EUR-INR	76.98	-0.29
Bond	Last Price	(%) Chg
India 10 Yr Bond yield	6.43	-0.42

52 Wk High (A group)			52 Wk Low (A group)		
Company	Close Price	52 Wk High	Company	Close Price	52 Wk Low
POWERG	209	213	APOLLOT	163	162
--	--	--	BHARATF	431	421
--	--	--	GLENMA	417	416
--	--	--	HINDZIN	218	217
--	--	--	M&MFIN	304	289

Source: BSE

Market Technical Outlook



Nifty opened on a subdued note traded in a narrow range with negative bias to close in red. On the daily chart we are observing that prices have tested the demand zone (shown above in the graph by parallel line). Hence a pull back from current level cannot be ruled out.

Outlook: In coming trading session if Nifty opens lower in the range of 11240 to 11221 levels then one can initiate long with a stop loss of 11200 for a target of 11301 – 11320 levels.

News for stocks under our Fundamental coverage

YES BANK	ICRA has downgraded Basel III Compliant Tier I and Tier II bonds with a negative outlook.
OBEROI REALTY	Revenue down by 32.1% to Rs 603.3 cr. Net profit down by 50.8% to Rs 152.1 cr. Ebitda down 49% to Rs 235.3 cr. Margin at 39% vs 52%. (YoY)

Foreign Institutional Investments (FII's) Activities

Name of Segment	Net Buyer/seller	Rs In Cr
Index Futures	Net Sell	-1262.69
Stock Futures	Net Sell	-186.69
Net Future Position	Net Sell	-1449.37
Index Options	Net Sell	-1775.76
Stock Options	Net Buy	28.94
Net Options Position	Net Sell	-1746.82
FII In cash Segment	Net Sell	-1393.71
DII In cash Segment	Net Buy	2140.26
Net Cash Position	Net Buy	746.55

Technical Levels for Nifty 50 Companies

Company	Closing 24-07-2019	Buy/Sell Trigger	Resistance 1	Resistance 2	Support 1	Support 2
ADANI PORTS	381	386	395	409	372	364
ASIAN PAINT	1483	1457	1520	1556	1421	1359
AXIS BANK	712	718	727	742	704	695
BAJAJ-AUTO	2523	2516	2550	2577	2489	2455
BAJAJ FINSV	7065	7085	7204	7342	6947	6828
BAJ FINANCE	3174	3201	3267	3360	3108	3042
BHARTIARTL	339	340	344	349	335	331
BPCL	349	351	357	364	343	337
CIPLA	2641	2667	2714	2787	2594	2547
COALINDIA	519	522	526	534	514	510
DRREDDY	217	217	219	221	215	213
EICHER MOT	2599	2588	2622	2644	2566	2532
GAIL	16381	16570	16966	17550	15986	15590
GRASIM	137	137	139	141	135	133
HCLTECH	878	877	887	896	868	857
HDFC	1021	1016	1030	1039	1007	993
HDFC BANK	2184	2171	2202	2220	2153	2122
HEROMOTOCO	2281	2275	2299	2317	2257	2233
HINDALCO	2403	2431	2465	2527	2369	2334
HINDPETRO	197	199	202	207	194	191
HINDUNILVR	1729	1713	1748	1766	1694	1660
IBULHSGFIN	612	622	639	666	595	579
ICICIBANK	409	407	413	418	403	397
INDUSINDBK	1362	1381	1408	1454	1335	1308
INFRA TEL	264	264	267	270	261	258
INFY	786	788	792	798	782	778
IOC	148	147	149	151	146	143
ITC	271	271	274	276	268	265
JSWSTEEL	255	255	264	272	247	238
KOTAK BANK	1497	1495	1513	1528	1479	1461
LT	1387	1395	1413	1439	1369	1351
M&M	550	551	557	563	545	539
MARUTI	5768	5786	5847	5926	5707	5646
NTPC	132	132	133	135	131	129
ONGC	144	144	145	147	142	141
POWERGRID	210	210	212	215	208	206
RELIANCE	1259	1264	1274	1289	1249	1239
SBIN	340	340	344	349	336	332
SUNPHARMA	426	427	431	437	421	416
TATAMOTORS	151	153	156	160	149	146
TATASTEEL	446	451	458	471	438	431
TCS	2097	2098	2120	2142	2075	2054
TECHM	660	664	676	692	648	636
TITAN	1087	1093	1105	1122	1076	1064
ULTRACEMCO	4443	4475	4521	4599	4397	4352
UPL	617	625	641	665	601	585
VEDL	165	165	169	172	161	157
WIPRO	264	264	266	268	262	260
YES BANK	89	90	92	96	87	85
ZEEL	380	374	389	399	364	349

(Source – IRIS)

Guru Call: From the expert's desk

Company	Reco Date	Reco Price (Buy on dips)	High till date	Return%
Asian Paints Ltd.	30-Mar-17	1068.1	1529	43.15%
Avenue Supermarts Ltd.	31-Jul-17	898.55	1699	89.08%
Axis Bank Ltd.	10-Apr-18	519.3	827.75	59.40%
Bajaj Finance Ltd.	11-Oct-18	2271	3693.25	62.63%
Bajaj Finserv Ltd	1-Nov-16	3416.8	8557.85	150.46%
Bajaj Holdings And Investment Ltd	19-May-16	1499.1	3800	153.49%
Bandhan Bank Ltd.	19-Dec-18	556.4	636	14.31%
Century Textile and Industries Ltd	25-Nov-16	739.3	1471	98.97%
Cipla Ltd	20-Mar-17	597.3	678.5	13.59%
DLF Ltd	10-Apr-18	194.3	202.65	4.30%
Emami Limited	26-Jun-19	290.35	326	12.28%
Godrej Industries Ltd.	12-Feb-18	550.7	657.6	19.41%
Godrej Properties Ltd.	19-Dec-18	685.3	1014.8	48.08%
Grasim Industries Ltd.	31-May-17	1132.5	1331	17.53%
Havells India Ltd.	8-Dec-17	525.75	806.85	53.47%
Housing Development Finance Corp Ltd	19-Dec-17	1720	2235	29.94%
HDFC Asset Management Company Ltd.	19-Dec-18	1572.9	2070	31.60%
HDFC Bank Limited	10-Nov-16	1251.3	2494.5	99.35%
HDFC Life Insurance Co Ltd	19-Jan-18	485.05	548.3	13.04%
Hindustan Unilever Ltd.	13-Nov-17	1290.7	1870	44.88%
ICICI Bank Ltd.	6-Apr-18	278.65	443.9	59.30%
ICICI Prudential Life Insurance Company Ltd.	28-Jun-18	375.8	428	13.89%
Infosys Ltd.	17-Aug-17	487.6	773	58.53%
Kotak Mahindra Bank Ltd	10-Nov-16	822.1	1555	89.15%
Mahindra & Mahindra Ltd.	5-Jun-17	709.25	993	40.01%
Manappuram Finance Ltd.	24-Apr-18	119.2	144.95	21.60%
Marico Ltd.	4-Apr-18	325	396.6	22.03%
Nestle India Ltd.	27-Sep-18	9729.4	11950	22.82%
Oberoi Realty Ltd.	23-Nov-17	508.6	621.7	22.24%
Phoenix Mills Limited	7-July-19	655.15	660	0.07%
Pidilite Industries Limited	4-Oct-16	681.6	1313	92.63%
Prestige Estates Projects Limited	6-Jun-18	286.7	283.5	-1.12%
Rites Ltd.	19-Dec-18	283.7	301.4	6.24%
State Bank Of India	28-Aug-18	308	365	18.51%
Tata Global Beverages Ltd.	29-Jun-17	149.15	328.8	120.45%
Tata Consultancy Services Ltd.	8-Jan-18	1344.6	2292	70.46%
Trent Ltd.	19-Dec-18	348.4	449.05	28.89%
Ultratech Cement Ltd.	19-Dec-18	4084.6	4904	20.06%
Voltas Ltd.	27-Mar-18	613.9	658.4	7.25%
Whirlpool Of India Ltd.	7-Dec-16	872.25	1955	124.13%

NIFTY 50 STOCKS BELOW 200SMA

SCRIP NAME	SMA 200	CLOSING (24-07-2019)
WIPRO	265.17	264.20
ZEEL	415.34	379.60
ITC	284.29	270.85
HCLTECH	1036.03	1021.30
HINDUNILVR	1732.73	1728.65
TATASTEEL	511.88	446.00
DRREDDY	2639.20	2599.05
TATAMOTORS	179.08	151.25
CIPLA	547.61	518.75
M&M	691.07	550.00
HINDALCO	209.51	197.25
BPCL	350.20	349.10
HEROMOTOCO	2765.69	2403.40
SUNPHARMA	456.47	425.55
BRITANNIA	2954.27	2641.45
ONGC	154.78	143.60
VEDL	183.25	165.05
GAIL	168.75	136.65
EICHERMOT	21083.89	16381.05
INDUSINDBK	1553.50	1362.00
TECHM	741.03	660.45
JSWSTEEL	295.91	255.25
MARUTI	6958.74	5768.00
YESBANK	186.67	89.15
BAJAJ-AUTO	2803.69	2522.60
COALINDIA	244.91	216.85
INFRATEL	279.16	264.15
IBULHSGFIN	744.90	611.70

Securities in Ban For Trade Date 25-07-2019

DISHTV, IDBI.

Bulk Deals (BSE)

N/A.

Bulk Deals (NSE)

Deal Date	Scrip Name	Client Name	Deal Type	Quantity	Price
24-Jul-19	SBI Life Insurance Co Ltd	VALUE LINE PTE LTD	SELL	6500000	775.06

 Note- Executed on 24th July 2019. Bulk Deal Buy/Sell done by fund house is considered.

Research Analyst Registration No.

INH000002764

Contact

SMS: 'Arihant' to 56677

Website

www.arihantcapital.com

mail Id

research@arihantcapital.com

**Arihant is Forbes Asia's '200 Best under a \$Billion' Company
'Best Emerging Commodities Broker' awarded by UTV Bloomberg**

Disclaimer: This document has been prepared by Arihant Capital Markets Limited (hereinafter called as Arihant) and its subsidiaries and associated companies. This document does not constitute an offer or solicitation for the purchase and sale of any financial instrument by Arihant. Receipt and review of this document constitutes your agreement not to circulate, redistribute, retransmit or disclose to others the contents, opinions, conclusion, or information contained herein. This document has been prepared and issued on the basis of publicly available information, internally developed data and other sources believed to be reliable. Whilst meticulous care has been taken to ensure that the facts stated are accurate and opinions given are fair and reasonable, neither the analyst nor any employee of our company is in any way is responsible for its contents and nor is its accuracy or completeness guaranteed. This document is prepared for assistance only and is not intended to be and must not alone be taken as the basis for an investment decision. All recipients of this material should before dealing and or transacting in any of the products referred to in this material make their own investigation, seek appropriate professional advice. The investments discussed in this material may not be suitable for all investors. The recipient alone shall be fully responsible/are liable for any decision taken on the basis of this material. Arihant Capital Markets Ltd (including its affiliates) or its officers, directors, personnel and employees, including persons involved in the preparation or issuance of this material may; (a) from time to time, have positions in, and buy or sell or (b) be engaged in any other transaction and earn brokerage or other compensation in the financial instruments/products discussed herein or act as advisor or lender/borrower in respect of such securities/financial instruments/products or have other potential conflict of interest with respect to any recommendation and related information and opinions. The said persons may have acted upon and/or in a manner contradictory with the information contained here and may have a position or be otherwise interested in the investment referred to in this document before its publication. The user of this report assumes the entire risk of any use made of this data/report. Arihant especially states that it has no financial liability, whatsoever, to the users of this report.

Arihant Capital Markets Ltd

#1011 Solitaire Corporate Park Building No.10 1st Floor
Andheri Ghatkopar Link Road Chakala Andheri (E) Mumbai-400093
T. 022-42254800. Fax: 022-42254880
www.arihantcapital.com