

To join our research group on TELEGRAM, please click on the links - <https://bit.ly/37T17JR> and <https://bit.ly/2svtU7k>

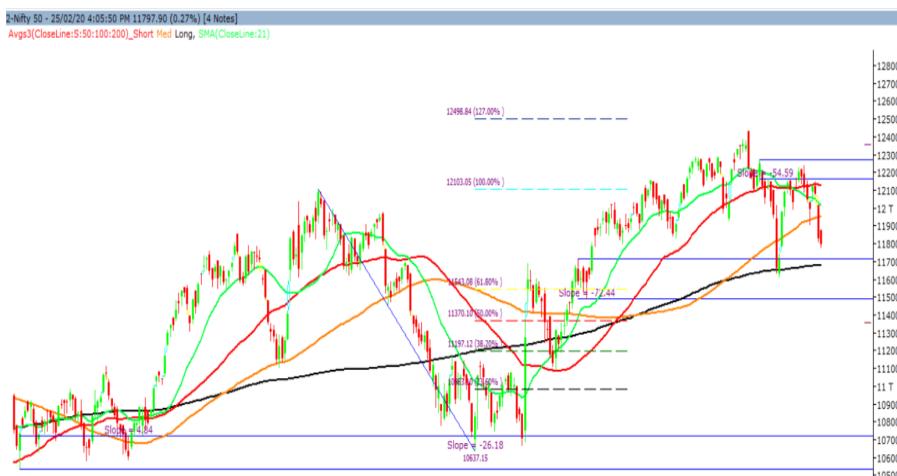
Wednesday, 26<sup>th</sup> February, 2020

Indian Indices	Last Price	(%) Chg
BSE	40281.20	-0.20
NSE	11813.20	-0.14
World Indices		
Dow Jones	27081.36	-3.15
Nasdaq	8965.61	-2.77
Nikkei	22351.89	-1.12
Hang Seng	26672.16	-0.82
FTSE	7017.88	-1.94
Commodity	Last Price	(%) Chg
GOLD(\$/ounce)	1643.40	-0.40
Silver (\$/Ounce)	18.06	-0.69
Crude (\$/BBL)	55.26	0.56
Aluminium spot (\$/mt)	1704.00	0.04
Copper SPOT (\$/mt)	5691.75	0.22
Lead Spot (\$/MT)	1846.75	-0.28
Natural gas \$/MMBtu	1.84	-0.49
Currency	Last Price	(%) Chg
USD-INR	71.89	-0.15
EUR-INR	77.91	-0.04
Bond	Last Price	(%) Chg
India 10 Yr Bond yield	6.35	-0.17

52 Wk High (A group)			52 Wk Low (A group)		
Company	Close Price	52 Wk High	Company	Close Price	52 Wk Low
MINDTR	1051	1061	CANBK	162	162
MUTHO	943	954	DBCORP	117	117
TRENT	766	804	DCBBA	161	160
--	--	--	GSFC	66	65
--	--	--	HERO	2184	2165

Source: BSE

### Market Technical Outlook



Nifty opened higher but was unable to sustain the opening gains which led the indices to close in red. On the daily chart, we are observing that for two consecutive trading sessions we are witnessing a close below the 100 days SMA (11948). At present Nifty has strong support at the upward gap area of 11749 to 11783 from where a bounce cannot be ruled out. On the upside 11850 – 11900 may act as resistance for the day.

**We reiterate our stance that one needs to adopt cautiously approach at current level. However, stock specific activity is likely to continue.**

### News for stocks

<b>BANDHANBANK</b>	RBI allowed Bandhan Bank to open branches without its prior approval, lifting a ban imposed on the lender for failing to reduce promoter ownership below the mandated 40%.
<b>TRAI Data</b>	Vodafone Idea lost 36,44,453 users in December. Bharti Airtel lost 11,050 users in December. Reliance Jio added 82,308 users in Dec.

### Foreign Institutional Investments (FII's) Activities

Name of Segment	Net Buyer/seller	Rs In Cr
Index Futures	Net Buy	1470.07
Stock Futures	Net Sell	-1553.14
<b>Net Future Position</b>	<b>Net Sell</b>	<b>-83.07</b>
Index Options	Net Sell	-1306.92
Stock Options	Net Buy	50.49
<b>Net Options Position</b>	<b>Net Sell</b>	<b>-1256.43</b>
FII In cash Segment	Net Sell	-2315.07
DII In cash Segment	Net Buy	1565.28
<b>Net Cash Position</b>	<b>Net Sell</b>	<b>-749.79</b>

**Technical Levels for Nifty 50 Companies**

Company	Closing 25-02-2020	Buy/Sell Trigger	Resistance 1	Resistance 2	Support 1	Support 2
ADANI PORTS	358.40	359.57	363.53	368.67	354.43	350.47
ASIAN PAINT	1826.10	1829.95	1839.70	1853.30	1816.35	1806.60
AXIS BANK	728.75	727.60	733.15	737.55	723.20	717.65
BAJAJ-AUTO	2947.40	2961.80	2992.60	3037.80	2916.60	2885.80
BAJAJ FINSV	9525.00	9475.37	9599.63	9674.27	9400.73	9276.47
BAJ FINANCE	4825.95	4819.95	4855.90	4885.85	4790.00	4754.05
BHARTIARTL	535.25	534.72	538.48	541.72	531.48	527.72
BPCL	456.75	460.73	466.57	476.38	450.92	445.08
BRITANNIA	3033.55	3043.18	3068.37	3103.18	3008.37	2983.18
CIPLA	425.80	425.67	431.33	436.87	420.13	414.47
COALINDIA	175.10	176.00	177.80	180.50	173.30	171.50
DRREDDY	3086.90	3108.52	3160.68	3234.47	3034.73	2982.57
EICHER MOT	17532.30	17694.43	18067.87	18603.43	17158.87	16785.43
GAIL	114.00	115.35	117.25	120.50	112.10	110.20
GRASIM	720.40	722.80	730.50	740.60	712.70	705.00
HCLTECH	582.45	584.38	593.77	605.08	573.07	563.68
HDFC	2302.60	2302.78	2320.57	2338.53	2284.82	2267.03
HDFC BANK	1200.30	1202.43	1206.87	1213.43	1195.87	1191.43
HEROMOTOCO	2184.15	2187.40	2210.75	2237.35	2160.80	2137.45
HINDALCO	174.45	176.65	179.25	184.05	171.85	169.25
HINDUNILVR	2233.60	2246.35	2266.95	2300.30	2213.00	2192.40
ICICI BANK	530.95	531.68	538.07	545.18	524.57	518.18
INDUSINDBK	1153.85	1158.48	1178.17	1202.48	1134.17	1114.48
INFRA TEL	216.30	215.32	222.88	229.47	208.73	201.17
INFY	798.40	799.93	804.47	810.53	793.87	789.33
IOC	110.45	111.17	112.23	114.02	109.38	108.32
ITC	201.80	202.90	204.30	206.80	200.40	199.00
JSW STEEL	262.60	262.60	266.80	271.00	258.40	254.20
KOTAK BANK	1675.80	1677.95	1687.55	1699.30	1666.20	1656.60
LT	1242.05	1249.28	1258.42	1274.78	1232.92	1223.78
M&M	508.95	511.52	516.93	524.92	503.53	498.12
MARUTI	6414.55	6433.70	6490.85	6567.15	6357.40	6300.25
NESTLE IND	16380.50	16410.23	16511.12	16641.73	16279.62	16178.73
NTPC	110.10	110.73	111.82	113.53	109.02	107.93
ONGC	97.55	98.35	99.45	101.35	96.45	95.35
POWERGRID	186.15	186.40	187.45	188.75	185.10	184.05
RELIANCE	1416.40	1425.93	1441.87	1467.33	1400.47	1384.53
SBIN	326.80	325.72	329.23	331.67	323.28	319.77
SUN PHARMA	388.90	392.20	399.10	409.30	382.00	375.10
TATA MOTORS	149.90	150.25	153.05	156.20	147.10	144.30
TATA STEEL	421.30	420.42	426.43	431.57	415.28	409.27
TCS	2156.15	2147.93	2184.87	2213.58	2119.22	2082.28
TECHM	822.10	819.32	829.58	837.07	811.83	801.57
TITAN	1260.10	1267.88	1278.97	1297.83	1249.02	1237.93
ULTRACEMCO	4344.00	4358.25	4385.75	4427.50	4316.50	4289.00
UPL	566.35	568.70	575.30	584.25	559.75	553.15
VEDL	132.70	133.55	135.05	137.40	131.20	129.70
WIPRO	244.10	244.40	246.35	248.60	242.15	240.20
YES BANK	35.15	35.30	35.85	36.55	34.60	34.05
ZEEL	251.90	252.20	254.70	257.50	249.40	246.90

(Source – IRIS)

**Guru Call: From the expert's desk**

Company	Reco Date	Reco Price (Buy on dips)	High till date	Return%
Aditya Birla Capital	22-Nov-19	95.75	115.35	20.47%
Asian Paints Ltd.	30-Mar-17	1068.10	1916.70	79.45%
Avenue Supermarts Ltd.	31-Jul-17	898.55	2560.00	184.90%
Axis Bank Ltd.	10-Apr-18	519.30	827.75	59.40%
Bajaj Finance Ltd.	11-Oct-18	2271.00	4923.40	116.79%
Bajaj Finserv Ltd	1-Nov-16	3416.80	9950.00	191.21%
Bajaj Holdings And Investment Ltd	19-May-16	1499.10	3950.00	163.49%
Bandhan Bank Ltd.	19-Dec-18	556.40	650.00	16.82%
Bharat Petroleum Corporation Ltd.	23-Oct-19	531.50	549.00	3.29%
Century Textile and Industries Ltd	25-Nov-16	326.00	656.90	101.50%
Cipla Ltd	20-Mar-17	597.30	678.45	13.59%
Colgate Palmolive	16-Sep-19	1314.00	1642.60	25.01%
Container Corporation	22-Nov-19	577.00	603.00	4.51%
Dabur India	22-Oct-19	466.00	523.25	12.29%
DLF Ltd	10-Apr-19	194.30	265.90	36.85%
Emami Limited	26-Jun-19	290.35	357.70	23.20%
Godrej Industries Ltd.	12-Feb-18	550.70	657.60	19.41%
Godrej Properties Ltd.	19-Dec-18	685.30	1189.25	73.54%
Grasim Industries Ltd.	31-May-17	1132.50	1331.00	17.53%
Havells India Ltd.	8-Dec-17	525.75	806.85	53.47%
Housing Development Finance Corp Ltd	19-Dec-17	1720.00	2499.90	45.34%
HDFC Asset Management Company Ltd.	19-Dec-18	1572.90	3844.00	144.39%
HDFC Bank Limited	10-Nov-16	639.00	1305.50	104.30%
HDFC Life Insurance Co Ltd	19-Jan-18	485.05	646.40	33.26%
Hindustan Unilever Ltd.	13-Nov-17	1290.70	2308.20	78.83%
ICICI Bank Ltd.	6-Apr-18	278.65	552.20	98.17%
ICICI Prudential Life Insurance Company Ltd.	28-Jun-18	375.80	537.30	42.97%
ICICI Lombard General Insurance	19-Sep-19	1154.90	1440.40	24.72%
Infosys Ltd.	17-Aug-17	487.60	847.00	73.71%
Kansai Nerolac Paints	16-Dec-19	529.85	551.00	3.99%
Kotak Mahindra Bank Ltd	10-Nov-16	822.10	1740.00	111.65%
Mahindra & Mahindra Ltd.	5-Jun-17	709.25	993.00	40.01%
Manappuram Finance Ltd.	24-Apr-18	119.20	194.80	63.42%
Mahanagar Gas	15-Nov-19	1029.00	1246.20	21.11%
Marico Ltd.	4-Apr-18	325.00	404.00	24.31%
Nestle India Ltd.	27-Sep-18	9729.40	16831.50	73.00%
Oberoi Realty Ltd.	23-Nov-17	508.60	641.70	26.17%
Phoenix Mills Limited	7-Jul-19	655.15	913.85	39.49%
Pidilite Industries Limited	4-Oct-16	681.60	1607.00	135.77%
Prestige Estates Projects Limited	6-Jun-19	286.70	426.00	48.59%
Nam-India	25-Nov-18	377.00	452.90	20.13%
Rites Ltd.	19-Dec-18	226.96	331.00	45.84%
RBL Bank	22-Nov-19	334.00	391.20	17.13%
State Bank Of India	28-Aug-18	308.00	373.80	21.36%
Shipping Corporation	22-Nov-19	64.00	65.95	3.05%
Tata Chemicals Limited	24-Dec-19	682.80	779.80	14.21%
Tata Global Beverages Ltd.	29-Jun-17	149.15	408.00	173.55%
Tata Consultancy Services Ltd.	8-Jan-18	1344.60	2296.20	70.77%
Trent Ltd.	19-Dec-18	348.40	794.00	127.90%
Ultratech Cement Ltd.	19-Dec-18	4084.60	4904.95	20.08%
Voltas Ltd.	27-Mar-18	613.90	741.00	20.70%
Whirlpool Of India Ltd.	7-Dec-16	872.25	2555.00	192.92%
Zee Entertainment	22-Nov-19	345.00	362.00	4.93%

**NIFTY 50 STOCKS BELOW 200SMA**

SCRIP NAME	SMA 200	CLOSING (25-02-2020)
WIPRO	257.76	244.1
ZEEL	308.69	251.9
LT	1390.66	1242.05
ITC	253.27	201.8
TATASTEEL	428.64	421.3
GRASIM	789.31	720.4
TATAMOTORS	157.53	149.9
CIPLA	488.89	425.8
M&M	571.69	508.95
HINDALCO	195.65	174.45
HDFCBANK	1210.35	1200.3
HEROMOTOCO	2538.04	2184.15
SUNPHARMA	420.02	388.9
IOC	135.95	110.45
AXISBANK	730.34	728.75
ONGC	137.03	97.55
VEDL	152.35	132.7
UPL	591.64	566.35
GAIL	134.96	114
EICHERMOT	19540.29	17532.3
INDUSINDBK	1408.09	1153.85
ADANIPTS	385.82	358.4
POWERGRID	196.17	186.15
NTPC	122.02	110.1
MARUTI	6747.28	6414.55
YESBANK	73.59	35.15
BAJAJ-AUTO	2979.95	2947.4
COALINDIA	210.12	175.1
INFRATEL	251.1	216.3

**Bulk Deals (BSE)**

N/A

**Bulk Deals (NSE)**

Deal Date	Scrip Name	Client Name	Deal Type	Quantity	Price
25-Feb-20	Goldiam International Lim	GOLDIAM INTERNATIONAL LIMITED	BUY	394339	155.46
25-Feb-20	The India Cements Limited	DAMANI GOPIKISHAN S	BUY	8522428	82.70
25-Feb-20	Tata Chemicals Ltd.	TATA SONS PRIVATE LIMITED	BUY	1621075	749.62
25-Feb-20	Goldiam International Lim	MINESH JORMALBHAI MEHTA	SELL	140501	155.67

 Note- Executed on 25<sup>th</sup> Feb 2020. Bulk Deal Buy/Sell done by fund house is considered.

**Securities in Ban For Trade Date 26-02-2020**

YESBANK

**Weekly Expiry Most Active Nifty Call Option**

Symbol	Expiry Date	Strike Price	Highest Open Interest (OI)
NIFTY	27-Feb-20	12000	5268075
NIFTY	27-Feb-20	12200	3995325
NIFTY	27-Feb-20	12100	3808575

**Weekly Expiry Most Active Nifty Put Option**

Symbol	Expiry Date	Strike Price	Highest Open Interest (OI)
NIFTY	27-Feb-20	11800	3415800
NIFTY	27-Feb-20	11700	2796750
NIFTY	27-Feb-20	12000	2382150

**Research Analyst Registration No.**

INH000002764

**Contact**

SMS: 'Arihant' to 56677

**Website**
[www.arihantcapital.com](http://www.arihantcapital.com)
**mail Id**
[arihant.research@arihantcapital.com](mailto:arihant.research@arihantcapital.com)

**Arihant is Forbes Asia's '200 Best under a \$Billion' Company  
 'Best Emerging Commodities Broker' awarded by UTV Bloomberg**

**Disclaimer:** This document has been prepared by Arihant Capital Markets Limited (hereinafter called as Arihant) and its subsidiaries and associated companies. This document does not constitute an offer or solicitation for the purchase and sale of any financial instrument by Arihant. Receipt and review of this document constitutes your agreement not to circulate, redistribute, retransmit or disclose to others the contents, opinions, conclusion, or information contained herein. This document has been prepared and issued on the basis of publicly available information, internally developed data and other sources believed to be reliable. Whilst meticulous care has been taken to ensure that the facts stated are accurate and opinions given are fair and reasonable, neither the analyst nor any employee of our company is in any way is responsible for its contents and nor is its accuracy or completeness guaranteed. This document is prepared for assistance only and is not intended to be and must not alone be taken as the basis for an investment decision. All recipients of this material should before dealing and or transacting in any of the products referred to in this material make their own investigation, seek appropriate professional advice. The investments discussed in this material may not be suitable for all investors. The recipient alone shall be fully responsible/are liable for any decision taken on the basis of this material. Arihant Capital Markets Ltd (including its affiliates) or its officers, directors, personnel and employees, including persons involved in the preparation or issuance of this material may; (a) from time to time, have positions in, and buy or sell or (b) be engaged in any other transaction and earn brokerage or other compensation in the financial instruments/products discussed herein or act as advisor or lender/borrower in respect of such securities/financial instruments/products or have other potential conflict of interest with respect to any recommendation and related information and opinions. The said persons may have acted upon and/or in a manner contradictory with the information contained here and may have a position or be otherwise interested in the investment referred to in this document before its publication. The user of this report assumes the entire risk of any use made of this data/report. Arihant especially states that it has no financial liability, whatsoever, to the users of this report.

## Arihant Capital Markets Ltd

#1011 Solitaire Corporate Park Building No.10 1<sup>st</sup> Floor  
 Andheri Ghatkopar Link Road Chakala Andheri (E) Mumbai-400093  
 T. 022-42254800. Fax: 022-42254880  
[www.arihantcapital.com](http://www.arihantcapital.com)