

To join our research group on TELEGRAM, please click on the links - <https://bit.ly/37T17JR> and <https://bit.ly/2svtU7k>

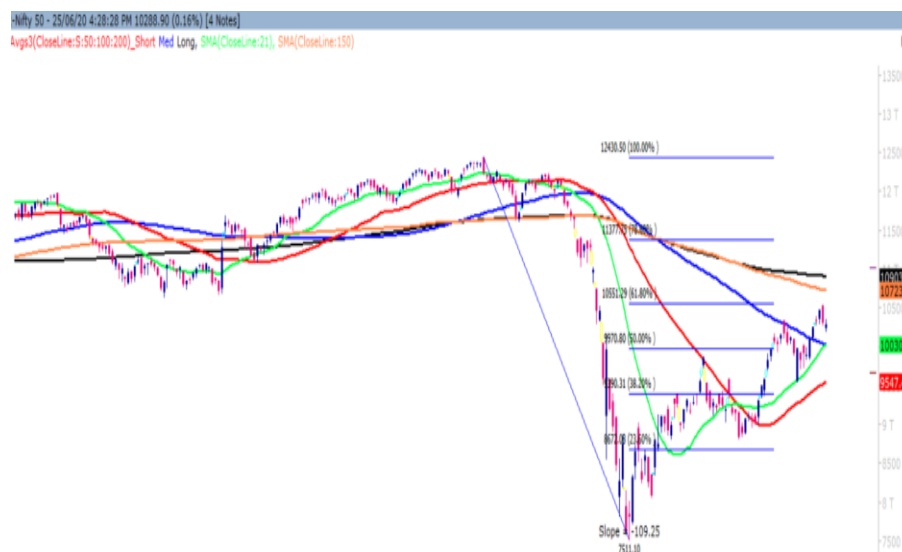
Friday, 26th June, 2020

Indian Indices	Last Price	(%) Chg
BSE	34842.10	-0.08
NSE	10288.90	-0.16
World Indices	Last Price	(%) Chg
Dow Jones	25745.60	1.18
Nasdaq	10017.00	1.09
Nikkei	22474.65	0.97
Hang Seng	24667.49	-0.46
FTSE	6147.14	0.38
Commodity	Last Price	(%) Chg
GOLD(\$/ounce)	1771.80	0.07
Silver (\$/Ounce)	17.88	-0.06
Crude (\$/BBL)	41.53	1.17
Aluminium spot (\$/mt)	1572.75	0.06
Copper SPOT (\$/mt)	5939.00	0.06
Lead Spot (\$/MT)	1786.75	0.10
Natural gas \$/MMBtu	1.53	-0.97
Currency	Last Price	(%) Chg
USD-INR	75.64	-0.01
EUR-INR	84.81	-0.80
Bond	Last Price	(%) Chg
India 10 Yr Bond yield	5.89	-0.46

52 Wk High (A group)			52 Wk Low (A group)		
Company	Close Price	52 Wk High	Company	Close Price	52 Wk Low
BIOCON	404	406	--	--	--
COROMA	751	760	--	--	--
GUJGAS	308	316	--	--	--
INFIBEAM	65.7	68.5	--	--	--
RALLIS	271	279	--	--	--

Source: BSE

Market Technical Outlook



Nifty opened lower but recovered some of its losses in the latter half of the session to close in red. On the daily chart, we are observing that prices traded below the low (10281) of a bearish Engulfing pattern but managed to close above it. In coming trading session if Nifty trades above 10361 level then it is likely to test 10450 – 10500 levels. On the downside 10194 – 10120 level may act as support for the day.

We still maintain our view that buying may emerge at the demand zone of 10200 – 10070. Hence cautiously positive approach at current level should be adopted as stock specific move is likely to continue.

News for stocks

--	--
--	--

Foreign Institutional Investments (FII's) Activities

Name of Segment	Net Buyer/seller	Rs In Cr
Index Futures	Net Sell	-1001.83
Stock Futures	Net Buy	734.18
Net Future Position	Net Sell	-267.65
Index Options	Net Buy	597.14
Stock Options	Net Sell	-262.62
Net Options Position	Net Buy	334.52
FII In cash Segment	Net Sell	-1050.61
DII In cash Segment	Net Sell	-255.59
Net Cash Position	Net Sell	-1306.20

Guru Call: From the expert's desk

Company	Reco Date	Reco Price (Buy on dips)	High till date	Return%
Aditiya Birla Capital	22-Nov-19	95.75	115.35	20.47%
Asian Paints Ltd.	30-Mar-17	1068.10	1916.70	79.45%
Avenue Supermarts Ltd.	31-Jul-17	898.55	2560.00	184.90%
Axis Bank Ltd.	10-Apr-18	519.30	827.75	59.40%
Bajaj Finance Ltd.	11-Oct-18	2271.00	4923.40	116.79%
Bajaj Finserv Ltd	1-Nov-16	3416.80	9950.00	191.21%
Bajaj Holdings And Investment Ltd	19-May-16	1499.10	3950.00	163.49%
Bandhan Bank Ltd.	19-Dec-18	556.40	650.00	16.82%
Bharat Petroleum Corporation Ltd.	23-Oct-19	531.50	549.00	3.29%
Century Textile and Industries Ltd	25-Nov-16	326.00	656.90	101.50%
Cipla Ltd	20-Mar-17	597.30	678.45	13.59%
Colgate Palmolive	16-Sep-19	1314.00	1642.60	25.01%
Container Corporation	22-Nov-19	577.00	603.00	4.51%
Dabur India	22-Oct-19	466.00	525.00	12.66%
DLF Ltd	10-Apr-19	194.30	265.90	36.85%
Emami Limited	26-Jun-19	290.35	357.70	23.20%
Godrej Industries Ltd.	12-Feb-18	550.70	657.60	19.41%
Godrej Properties Ltd.	19-Dec-18	685.30	1189.25	73.54%
Grasim Industries Ltd.	31-May-17	1132.50	1331.00	17.53%
Havells India Ltd.	8-Dec-17	525.75	806.85	53.47%
Housing Development Finance Corp Ltd	19-Dec-17	1720.00	2499.90	45.34%
HDFC Asset Management Company Ltd.	19-Dec-18	1572.90	3844.00	144.39%
HDFC Bank Limited	10-Nov-16	639.00	1305.50	104.30%
HDFC Life Insurance Co Ltd	19-Jan-18	485.05	646.40	33.26%
Hindustan Unilever Ltd.	13-Nov-17	1290.70	2308.20	78.83%
ICICI Bank Ltd.	6-Apr-18	278.65	552.20	98.17%
ICICI Prudential Life Insurance Company Ltd.	28-Jun-18	375.80	537.30	42.97%
ICICI Lombard General Insurance	19-Sep-19	1154.90	1440.40	24.72%
Infosys Ltd.	17-Aug-17	487.60	847.00	73.71%
Kansai Nerolac Paints	16-Dec-19	529.85	551.00	3.99%
Kotak Mahindra Bank Ltd	10-Nov-16	822.10	1740.00	111.65%
Mahindra & Mahindra Ltd.	5-Jun-17	709.25	993.00	40.01%
Manappuram Finance Ltd.	24-Apr-18	119.20	194.80	63.42%
Mahanagar Gas	15-Nov-19	1029.00	1246.20	21.11%
Marico Ltd.	4-Apr-18	325.00	404.00	24.31%
Nestle India Ltd.	27-Sep-18	9729.40	16835.15	73.03%
Oberoi Realty Ltd.	23-Nov-17	508.60	641.70	26.17%
Phoenix Mills Limited	7-Jul-19	655.15	979.00	49.43%
Pidilite Industries Limited	4-Oct-16	681.60	1661.00	143.69%
Prestige Estates Projects Limited	6-Jun-19	286.70	426.00	48.59%
Nam-India	25-Nov-18	377.00	452.90	20.13%
Rites Ltd.	19-Dec-18	226.96	331.00	45.84%
RBL Bank	22-Nov-19	334.00	391.20	17.13%
State Bank Of India	28-Aug-18	308.00	373.80	21.36%
Shipping Corporation	22-Nov-19	64.00	65.95	3.05%
Tata Chemicals Limited	24-Dec-19	296.89	339.70	14.42%
Tata Consumer	29-Jun-17	149.15	408.00	173.55%
Tata Consultancy Services Ltd.	8-Jan-18	1344.60	2296.20	70.77%
Trent Ltd.	19-Dec-18	348.40	794.00	127.90%
Ultratech Cement Ltd.	19-Dec-18	4084.60	4904.95	20.08%
Voltas Ltd.	27-Mar-18	613.90	741.00	20.70%
Whirlpool Of India Ltd.	7-Dec-16	872.25	2555.00	192.92%
Zee Entertainment	22-Nov-19	345.00	362.00	4.93%

Technical Levels for Nifty 50 Companies

Company	Closing 25-06-2020	Buy/Sell Trigger	Resistance 1	Resistance 2	Support 1	Support 2
ADANI PORTS	344.00	345.90	349.60	355.20	340.30	336.60
ASIAN PAINT	1689.00	1706.38	1729.62	1770.23	1665.77	1642.53
AXIS BANK	421.70	420.25	430.15	438.60	411.80	401.90
BAJAJ-AUTO	2820.45	2827.72	2882.73	2945.02	2765.43	2710.42
BAJAJ FINSV	6021.15	6022.13	6124.02	6226.88	5919.27	5817.38
BAJ FINANCE	3005.35	2967.45	3083.90	3162.45	2888.90	2772.45
BHARTIARTL	559.00	557.57	565.13	571.27	551.43	543.87
BPCL	370.25	373.95	380.60	390.95	363.60	356.95
BRITANNIA	3450.40	3448.27	3476.53	3502.67	3422.13	3393.87
CIPLA	634.90	635.35	641.55	648.20	628.70	622.50
COALINDIA	140.40	140.80	143.25	146.10	137.95	135.50
DRREDDY	4006.60	4008.05	4039.55	4072.50	3975.10	3943.60
EICHER MOT	18090.70	18128.55	18337.10	18583.50	17882.15	17673.60
GAIL	103.10	104.20	105.90	108.70	101.40	99.70
GRASIM	607.45	612.68	621.32	635.18	598.82	590.18
HCLTECH	550.05	552.92	557.83	565.62	545.13	540.22
HDFC	1777.80	1783.57	1805.23	1832.67	1756.13	1734.47
HDFC BANK	1028.75	1028.25	1049.50	1070.25	1007.50	986.25
HEROMOTOCO	2559.70	2532.95	2611.75	2663.80	2480.90	2402.10
HINDALCO	146.60	147.83	151.07	155.53	143.37	140.13
HINDUNILVR	2173.15	2158.35	2204.70	2236.25	2126.80	2080.45
ICICIBANK	351.00	348.37	358.23	365.47	341.13	331.27
INDUSINDBK	475.15	475.70	490.40	505.65	460.45	445.75
INFRA TEL	228.45	226.28	234.57	240.68	220.17	211.88
INFY	700.50	699.87	706.23	711.97	694.13	687.77
IOC	85.05	85.95	87.20	89.35	83.80	82.55
ITC	202.10	199.08	206.52	210.93	194.67	187.23
JSW STEEL	193.55	193.97	196.93	200.32	190.58	187.62
KOTAK BANK	1381.70	1365.48	1405.97	1430.23	1341.22	1300.73
LT	943.10	948.05	959.85	976.60	931.30	919.50
M&M	507.25	508.98	514.62	521.98	501.62	495.98
MARUTI	5762.30	5753.37	5855.73	5949.17	5659.93	5557.57
NESTLE IND	16787.00	16734.00	16903.00	17019.00	16618.00	16449.00
NTPC	96.10	96.33	98.32	100.53	94.12	92.13
ONGC	81.60	81.87	83.73	85.87	79.73	77.87
POWERGRID	179.35	179.00	183.65	187.95	174.70	170.05
RELIANCE	1717.90	1726.65	1740.25	1762.60	1704.30	1690.70
SBIN	185.25	184.15	187.90	190.55	181.50	177.75
SHREECEM	22068.80	22192.30	22495.60	22922.40	21765.50	21462.20
SUN PHARMA	487.65	485.72	494.43	501.22	478.93	470.22
TATAMOTORS	103.80	103.92	106.18	108.57	101.53	99.27
TATA STEEL	323.10	323.83	326.67	330.23	320.27	317.43
TCS	2016.10	2028.45	2047.65	2079.20	1996.90	1977.70
TECHM	554.15	557.27	562.48	570.82	548.93	543.72
TITAN	977.60	981.72	989.88	1002.17	969.43	961.27
ULTRACEMCO	3802.35	3819.70	3857.65	3912.95	3764.40	3726.45
UPL	442.90	445.02	452.58	462.27	435.33	427.77
VEDL	111.25	110.50	113.00	114.75	108.75	106.25
WIPRO	218.20	218.50	221.70	225.20	215.00	211.80
ZEEL	172.35	172.52	176.23	180.12	168.63	164.92

NIFTY 50 STOCKS BELOW 200SMA

SCRIP NAME	SMA 200	CLOSING (25-06-2020)
INFY	718.95	700.50
WIPRO	227.03	218.20
ZEEL	235.06	172.75
LT	1177.28	943.10
ITC	215.77	202.10
TATASTEEL	368.14	323.10
SBIN	262.76	185.60
GRASIM	671.56	607.45
TATAMOTORS	131.85	103.80
HDFC	2057.75	1777.80
HINDALCO	168.71	147.85
BPCL	427.17	370.25
ICICIBANK	439.59	350.55
HDFCBANK	1125.00	1035.00
ASIANPAINT	1726.17	1689.00
IOC	111.41	85.05
AXISBANK	607.93	421.70
ONGC	106.52	81.60
TITAN	1113.16	977.60
VEDL	124.36	111.25
UPL	499.59	442.90
GAIL	111.47	103.10
EICHERMOT	18255.80	18090.70
INDUSINDBK	1031.99	475.15
BAJFINANCE	3516.54	3005.35
ADANI PORTS	348.89	344.00
POWERGRID	182.38	179.35
ULTRACEMCO	3976.36	3799.85
TCS	2047.75	2016.10
KOTAKBANK	1494.03	1381.70
TECHM	682.72	554.05
JSWSTEEL	223.24	193.55
NTPC	107.49	96.10
MARUTI	6340.86	5762.30
BAJAJ-AUTO	2862.13	2820.45
BAJAJFINSV	7528.06	6021.15
COALINDIA	174.35	140.40

Securities in Ban For Trade Date 26-06-2020

NIL

Bulk Deals (BSE)

N/A.

Bulk Deals (NSE)

Deal Date	Scrip Name	Client Name	Deal Type	Quantity	Price
25-Jun-20	Tourism Finance Corp	BEACON TRUSTEESHIP LIMITED	SELL	414290	35.77
25-Jun-20	Tourism Finance Corp	DOVETAIL INDIA FUND CLASS 6 SHARES	SELL	1023271	35.50

 Note- Executed on 25th Jun 2020. Bulk Deal Buy/Sell done by fund house is considered.

Weekly Expiry Most Active Nifty Call Option

Symbol	Expiry Date	Strike Price	Highest Open Interest (OI)
NIFTY	02-Jul-2020	10500	1319850
NIFTY	02-Jul-2020	11000	1285275
NIFTY	02-Jul-2020	10400	986400

Weekly Expiry Most Active Nifty Put Option

Symbol	Expiry Date	Strike Price	Highest Open Interest (OI)
NIFTY	02-Jul-2020	10000	1383750
NIFTY	02-Jul-2020	9000	875475
NIFTY	02-Jul-2020	10100	793500

Research Analyst Registration No.

INH000002764

Contact

SMS: 'Arihant' to 56677

Website
www.arihantcapital.com
mail Id
arihant.research@arihantcapital.com

Arihant is Forbes Asia's '200 Best under a \$Billion' Company
'Best Emerging Commodities Broker' awarded by UTV Bloomberg

Disclaimer: This document has been prepared by Arihant Capital Markets Limited (hereinafter called as Arihant) and its subsidiaries and associated companies. This document does not constitute an offer or solicitation for the purchase and sale of any financial instrument by Arihant. Receipt and review of this document constitutes your agreement not to circulate, redistribute, retransmit or disclose to others the contents, opinions, conclusion, or information contained herein. This document has been prepared and issued on the basis of publicly available information, internally developed data and other sources believed to be reliable. Whilst meticulous care has been taken to ensure that the facts stated are accurate and opinions given are fair and reasonable, neither the analyst nor any employee of our company is in any way is responsible for its contents and nor is its accuracy or completeness guaranteed. This document is prepared for assistance only and is not intended to be and must not alone be taken as the basis for an investment decision. All recipients of this material should before dealing and or transacting in any of the products referred to in this material make their own investigation, seek appropriate professional advice. The investments discussed in this material may not be suitable for all investors. The recipient alone shall be fully responsible/are liable for any decision taken on the basis of this material. Arihant Capital Markets Ltd (including its affiliates) or its officers, directors, personnel and employees, including persons involved in the preparation or issuance of this material may; (a) from time to time, have positions in, and buy or sell or (b) be engaged in any other transaction and earn brokerage or other compensation in the financial instruments/products discussed herein or act as advisor or lender/borrower in respect of such securities/financial instruments/products or have other potential conflict of interest with respect to any recommendation and related information and opinions. The said persons may have acted upon and/or in a manner contradictory with the information contained here and may have a position or be otherwise interested in the investment referred to in this document before its publication. The user of this report assumes the entire risk of any use made of this data/report. Arihant especially states that it has no financial liability, whatsoever, to the users of this report.

Arihant Capital Markets Ltd

#1011 Solitaire Corporate Park Building No.10 1st Floor
 Andheri Ghatkopar Link Road Chakala Andheri (E) Mumbai-400093
 T. 022-42254800. Fax: 022-42254880
www.arihantcapital.com