

To join our research group on TELEGRAM, please click on the links - <https://bit.ly/2Rt4NyS> and <https://bit.ly/3ciqvDn>

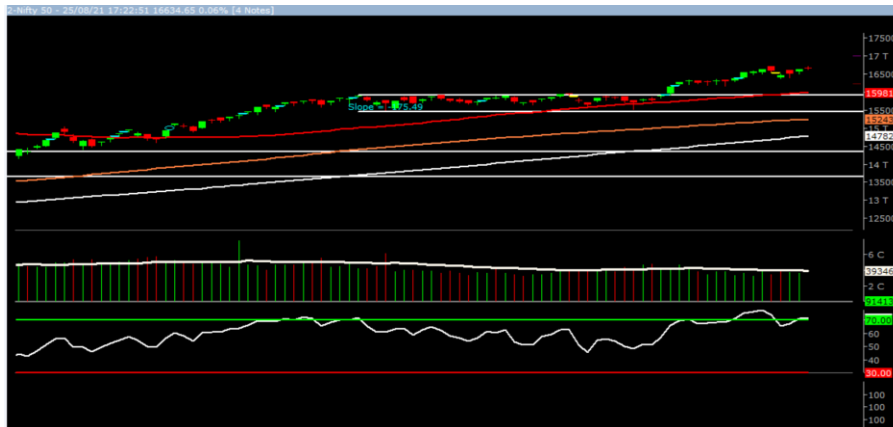
Thursday, 26th Aug, 2021

Indian Indices	Last Price	(%) Chg
NSE	16634.65	0.06
BSE	55944.21	-0.03
World Indices	Last Price	(%) Chg
Dow Jones	35405.50	0.11
Nasdaq	15041.86	0.15
Nikkei	27693.42	-0.11
Hang Seng	25456.63	-0.92
FTSE	7150.12	0.34
Commodity	Last Price	(%) Chg
GOLD(\$/ounce)	1789.40	-0.09
Silver (\$/Ounce)	23.80	0.08
Crude (\$/BBL)	71.83	-0.58
Aluminium spot (\$/mt)	2612.00	-0.24
Copper SPOT (\$/mt)	9318.75	-0.30
Lead Spot (\$/MT)	2308.25	-0.14
Natural gas \$/MMBtu	3.92	0.62
Currency	Last Price	(%) Chg
USD-INR	74.15	0.07
EUR-INR	87.24	0.01
Bond		
India 10 Yr Bond yield	6.24	-0.14

52 Wk High (A group)			52 Wk Low (A group)		
Company	Close Price	52 Wk High	Company	Close Price	52 Wk Low
BAJAJELE	1173	1238	AMRAJA	675	675
BAJFIN	6942	7052	--	--	--
BAJHOLD	4170	4261	--	--	--
COFORG	4988	5248	--	--	--
TCS	3659	3697	--	--	--

Source: BSE

Market Technical Outlook



Nifty opened higher made all-time high and witness some profit booking to close marginally in green. On the daily chart we are observing three narrow range body formations with higher highs this suggests upside momentum. In coming trading session if nifty for first hour trades above 16712 level then it may test 16780 - 16810 levels. On the downside, 16510- 16450 levels may act as support for the day.

We still continue to maintain our stance that stock specific activity is likely to continue.

Foreign Institutional Investments (FII's) Activities

Name of Segment	Net Buyer/seller	Rs In Cr
Index Futures	Net Buy	78.02
Stock Futures	Net Buy	818.05
Net Future Position	Net Buy	896.07
Index Options	Net Buy	2340.71
Stock Options	Net Buy	115.80
Net Options Position	Net Buy	2456.51
FII In cash Segment	Net Sell	-1071.83
DII In cash Segment	Net Sell	-151.39
Net Cash Position	Net Sell	-1223.22

Guru Call: From the expert's desk

Company	Reco Date	Reco Price (Buy on dips)	High till date	Return%
Accelya Solutions India Ltd	10-Jun-21	1203.90	1539.40	27.87%
Aditya Birla Capital Ltd	13-Aug-21	206.60	210.95	2.11%
Aditya Birla Fashion and Retail Ltd	08-Feb-21	164.40	231.65	40.91%
Alkem	08-Jul-20	2427.00	3558.90	46.64%
Apcotex Industries Limited	13-Aug-21	342.90	350.05	2.09%
Asian Paints Ltd.	30-Mar-17	1068.10	3179.50	197.68%
Astec LifeSciences Limited	09-Jul-21	1360.70	1487.00	9.28%
Avenue Supermarts Ltd.	31-Jul-17	898.55	3448.95	283.84%
Axis Bank Ltd.	10-Apr-18	519.30	827.75	59.40%
Bajaj Finserv Ltd	1-Nov-16	3416.80	13110.00	283.69%
Bajaj Holdings And Investment Ltd	19-May-16	1499.10	4060.00	170.83%
Birla Corporation Limited	28-Jun-21	1240.00	1450.80	17.00%
Britannia	12-June-20	3366.00	4010.00	19.13%
Cadila	03-Apr-20	274.00	673.70	145.88%
CAMS	08-Oct-20	1334.90	3740.65	180.22%
CDSL	17-Sep-20	485.90	1579.00	224.96%
Century Textile and Industries Ltd	25-Nov-16	750.40	1471.20	96.06%
CESC Ltd	08-Jun-21	758.20	870.90	14.86%
CG Power and Industrial Solutions Ltd	10-Feb-21	45.25	91.95	103.20%
Chola finance	25-Sep-20	238.70	600.95	151.76%
Chola Holding	23-Sep-20	391.80	711.00	81.47%
Cipla Ltd	20-Mar-17	597.30	997.00	66.92%
Colgate Palmolive	16-Sep-19	1314.00	1794.85	36.59%
Dabur India	22-Oct-19	466.00	605.00	29.83%
DFM Foods Ltd	03-Feb-21	409.05	453.80	10.94%
DLF Ltd	10-Apr-19	194.30	338.80	74.37%
Dr Reddy	04-Aug-20	4530.00	5614.60	23.94%
Emami Limited	26-Jun-19	290.35	578.50	99.24%
Finolex Cables Ltd	08-Feb-21	368.80	557.70	51.22%
Firstsource Solutions Ltd	13-Aug-21	201.10	209.35	4.10%
Fortis	14-Jul-20	127.00	253.90	99.92%
Gati Ltd	13-Aug-21	148.90	154.20	3.56%
Gillette India Limited	11-Jun-21	5847.00	6249.00	6.88%
Glaxosmithkline Pharmaceuticals Ltd	27-Aug-20	1455.75	1807.50	24.16%
Godrej Consumer Products Limited	16-Jun-20	634.00	980.70	54.68%
HDFC Asset Management Company Ltd.	19-Dec-18	1572.90	3844.00	144.39%
HDFC Bank Limited	10-Nov-16	639.00	1641.00	156.81%
HDFC Life Insurance Co Ltd	19-Jan-18	485.05	746.00	53.80%
Hero Motocorp Ltd	29-Sep-20	3174.95	3629.05	14.30%
Hindustan Unilever Ltd.	13-Nov-17	1290.70	2614.30	102.55%
Housing Development Finance Corp Ltd	19-Dec-17	1720.00	2896.00	68.37%
ICICI Bank Ltd.	06-Apr-18	278.65	679.40	143.82%
ICICI Lombard General Insurance	19-Sep-19	1154.90	1626.45	40.83%
ICICI Prudential Life Insurance Company Ltd.	28-Jun-18	375.80	660.20	75.68%
ICICI Securities Ltd	24-Sep-20	466.65	802.00	71.86%
Indusindbnk	08-Jun-20	451.00	1119.50	148.23%
Infosys Ltd.	17-Aug-17	487.60	1596.85	227.49%
INOX Leisure Ltd	13-Aug-21	327.80	332.70	1.49%
Ion Exchange (India) Ltd	01-June-21	1464.95	2947.00	101.17%
Jubilant Ingrevia Ltd	22-Jul-21	623.00	640.00	2.73%
Kotak Mahindra Bank Ltd	10-Nov-16	822.10	2049.00	149.24%
L&T Finance Holdings Ltd	03-Dec-20	84.05	113.40	34.92%

NIFTY 50 STOCKS BELOW 200SMA

SCRIP NAME	SMA 200	CLOSING (25-08-2021)
ITC	207.46	206.4
DRREDDY	4968.63	4548.95
M&M	780.57	772.05
HEROMOTOCO	3044.09	2673.95
SHREECEM	26764.3	26288.25
EICHERMOT	2605.69	2579.5
KOTAKBANK	1815.41	1697.2
MARUTI	7208.2	6711.45
BAJAJ-AUTO	3759.78	3689.65
COALINDIA	139.44	138.85
--	--	--
--	--	--

Weekly Expiry Most Active Nifty Call Option

Symbol	Expiry Date	Strike Price	Highest Open Interest (Contracts)
NIFTY	26-Aug-2021	16700	1,36,665
NIFTY	26-Aug-2021	16800	1,14,140
NIFTY	26-Aug-2021	17000	1,05,721

Weekly Expiry Most Active Nifty Put Option

Symbol	Expiry Date	Strike Price	Highest Open Interest (Contracts)
NIFTY	26-Aug-2021	16500	1,44,405
NIFTY	26-Aug-2021	16600	1,01,081
NIFTY	26-Aug-2021	16000	93,369

Securities in Ban For Trade Date 26-08-2021

IDEA, NATIONALUM, NMDC, SAIL

Bulk Deals (NSE)

Deal Date	Scrip Name	Client Name	Deal Type	Quantity	Price
25-Aug-21	ASTRON	APPLE WEIGHINFRA LIMITED .	BUY	300000	59.00
25-Aug-21	HIRECT	CASSINI PARTNERS L.P.	BUY	98612	181.90
25-Aug-21	JUBLPHARMA	JHUNJHUNWALA REKHA RAKESH	BUY	2000000	594.35
25-Aug-21	JUBLPHARMA	JHUNJHUNWALA RAKESH RADHEYSHYAM	BUY	2500000	594.35
25-Aug-21	LASA	SHREE VASUDEV EXIM	BUY	114011	80.84
25-Aug-21	REFEX	NISHANT BANTHIA	BUY	193000	151.56
25-Aug-21	CAPACITE	THINK INDIA OPPORTUNITIES MASTER FUND LP	SELL	616553	144.61
25-Aug-21	JUBLPHARMA	RARE ENTERPRISES	SELL	4025000	594.35
25-Aug-21	LASA	SHREE VASUDEV EXIM	SELL	301715	80.41

Bulk Deals (BSE)

Deal Date	Scrip Name	Client Name	Deal Type	Quantity	Price
25-Aug-21	BAJAJCON	GOLDMAN SACHS FUNDS - GOLDMAN SACHS INDIA EQUITY PORTFOLIO	B	3566539	245.55
25-Aug-21	BAJAJCON	GOLDMAN SACHS ASSET MANAGEMENT LLC A/C GOLDMAN SACHS INDIA	S	3566539	245.55
25-Aug-21	DELTACORP	GOLDMAN SACHS FUNDS - GOLDMAN SACHS INDIA EQUITY PORTFOLIO	B	2936041	168.45
25-Aug-21	DELTACORP	GOLDMAN SACHS ASSET MANAGEMENT LLC A/C GOLDMAN SACHS INDIA	S	2936041	168.45
25-Aug-21	GREENPLY	SHOWAN INVESTMENT PRIVATE LIMITED	B	6000000	177.75
25-Aug-21	GREENPLY	PRIME HOLDINGS PRIVATE LIMITED	S	6,000,000	177.75
25-Aug-21	GRINDWELL	GOLDMAN SACHS FUNDS - GOLDMAN SACHS INDIA EQUITY PORTFOLIO	B	1,034,082	1,259.75
25-Aug-21	GRINDWELL	GOLDMAN SACHS ASSET MANAGEMENT LLC A/C GOLDMAN SACHS INDIA	S	1,034,082	1,259.75
25-Aug-21	LASA	SHREE VASUDEV EXIM	B	338,428	81.85
25-Aug-21	MTARTECH	GOLDMAN SACHS FUNDS - GOLDMAN SACHS INDIA EQUITY PORTFOLIO	B	381,136	1,191.35
25-Aug-21	MTARTECH	GOLDMAN SACHS ASSET MANAGEMENT LLC A/C GOLDMAN SACHS INDIA	S	381136	1,191.35
25-Aug-21	SPANDANA	GOLDMAN SACHS FUNDS - GOLDMAN SACHS INDIA EQUITY PORTFOLIO	B	756395	619.30
25-Aug-21	SPANDANA	GOLDMAN SACHS ASSET MANAGEMENT LLC A/C GOLDMAN SACHS INDIA F	S	756395	619.3
25-Aug-21	SUDARSCHEM	GOLDMAN SACHS FUNDS - GOLDMAN SACHS INDIA EQUITY PORTFOLIO	B	911341	566.5
25-Aug-21	SUDARSCHEM	GOLDMAN SACHS ASSET MANAGEMENT LLC A/C GOLDMAN SACHS INDIA	S	911341	566.5
25-Aug-21	TEAMLEASE	GOLDMAN SACHS FUNDS - GOLDMAN SACHS INDIA EQUITY PORTFOLIO	B	321386	4010.75
25-Aug-21	TEAMLEASE	GOLDMAN SACHS ASSET MANAGEMENT LLC A/C GOLDMAN SACHS INDIA	S	321386	4010.75

Note- Executed on 25th Aug 2021. Bulk Deal Buy/Sell done by fund house is considered

Research Analyst Registration No.	Contact	Website	mail Id
INH000002764	SMS: 'Arihant' to 56677	www.arihantcapital.com	arihant.research@arihantcapital.com

**Arihant is Forbes Asia's '200 Best under a \$Billion' Company
'Best Emerging Commodities Broker' awarded by UTV Bloomberg**

Disclaimer: This document has been prepared by Arihant Capital Markets Limited (hereinafter called as Arihant) and its subsidiaries and associated companies. This document does not constitute an offer or solicitation for the purchase and sale of any financial instrument by Arihant. Receipt and review of this document constitutes your agreement not to circulate, redistribute, retransmit or disclose to others the contents, opinions, conclusion, or information contained herein. This document has been prepared and issued on the basis of publicly available information, internally developed data and other sources believed to be reliable. Whilst meticulous care has been taken to ensure that the facts stated are accurate and opinions given are fair and reasonable, neither the analyst nor any employee of our company is in any way is responsible for its contents and nor is its accuracy or completeness guaranteed. This document is prepared for assistance only and is not intended to be and must not alone be taken as the basis for an investment decision. All recipients of this material should before dealing and or transacting in any of the products referred to in this material make their own investigation, seek appropriate professional advice. The investments discussed in this material may not be suitable for all investors. The recipient alone shall be fully responsible/are liable for any decision taken on the basis of this material. Arihant Capital Markets Ltd (including its affiliates) or its officers, directors, personnel and employees, including persons involved in the preparation or issuance of this material may; (a) from time to time, have positions in, and buy or sell or (b) be engaged in any other transaction and earn brokerage or other compensation in the financial instruments/products discussed herein or act as advisor or lender/borrower in respect of such securities/financial instruments/products or have other potential conflict of interest with respect to any recommendation and related information and opinions. The said persons may have acted upon and/or in a manner contradictory with the information contained here and may have a position or be otherwise interested in the investment referred to in this document before its publication. The user of this report assumes the entire risk of any use made of this data/report. Arihant especially states that it has no financial liability, whatsoever, to the users of this report.

Arihant Capital Markets Ltd

#1011 Solitaire Corporate Park Building No.10 1st Floor
Andheri Ghatkopar Link Road Chakala Andheri (E) Mumbai-400093
T. 022-42254800. Fax: 022-42254880
www.arihantcapital.com