

To join our research group on TELEGRAM, please click on the links - <https://bit.ly/37T17JR> and <https://bit.ly/2svtU7k>

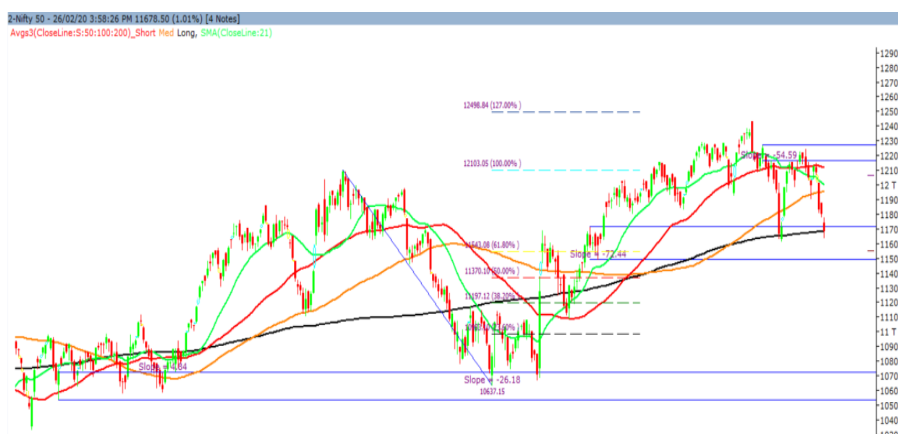
Thursday, 27th February, 2020

Indian Indices	Last Price	(%) Chg
BSE	39888.96	-0.97
NSE	11678.50	-1.01
World Indices		
Dow Jones	26957.59	-0.46
Nasdaq	8980.78	0.17
Nikkei	22035.09	-1.74
Hang Seng	26453.88	-0.91
FTSE	7042.47	-1.94
Commodity	Last Price	(%) Chg
GOLD(\$/ounce)	1651.80	0.53
Silver (\$/Ounce)	17.98	0.79
Crude (\$/BBL)	52.66	-1.44
Aluminium spot (\$/mt)	1697.25	-0.21
Copper SPOT (\$/mt)	5671.25	0.17
Lead Spot (\$/MT)	1826.25	0.30
Natural gas \$/MMBtu	1.81	-1.63
Currency	Last Price	(%) Chg
USD-INR	71.89	-0.32
EUR-INR	78.41	0.15
Bond	Last Price	(%) Chg
India 10 Yr Bond yield	6.34	-0.30

52 Wk High (A group)			52 Wk Low (A group)		
Company	Close Price	52 Wk High	Company	Close Price	52 Wk Low
SANOFI	7114	7637	BANKIND	56.8	56.5
--	--	--	BHEL	33.2	33.1
--	--	--	CANBK	159	159
--	--	--	DBCORP	117	116
--	--	--	FRETAIL	319	316

Source: BSE

Market Technical Outlook



Nifty opened down with a gap and traded with negative bias throughout the day with choppiness to close in red. On the daily chart, we are observing that prices have breached the 200-day SMA (11680) and have marginally closed below it. Further, we are witnessing that prices for second time tested the demand zone of 11714 to 11646 (Shown above in the graph). Hence, the said demand zone holds significance. Any close below the mentioned demand zone would intensify selling pressure. However a bounce from current level to 11750 – 11800 cannot be ruled out.

We maintain our stance that one needs to adopt cautiously approach at current level.

News for stocks

HINDUNILVR	HUL said the Chandigarh bench of the National Company Law Tribunal (NCLT) has approved its merger with GlaxoSmithKline Consumer Healthcare Ltd. The company is yet to notify the effective date of merger
BITES	The Government proposed to sell 1.25 crore shares (5% equity) in the company via offer for sale with an option to sell an additional 5% stake. The floor price for the offer has been fixed at Rs 298 per share, a discount of 6.6% to the current market price.

Foreign Institutional Investments (FII's) Activities

Name of Segment	Net Buyer/seller	Rs In Cr
Index Futures	Net Sell	-1262.06
Stock Futures	Net Sell	-1477.38
Net Future Position	Net Sell	-2739.44
Index Options	Net Buy	1740.57
Stock Options	Net Buy	224.53
Net Options Position	Net Buy	1965.10
FII In cash Segment	Net Sell	-3336.60
DII In cash Segment	Net Buy	2785.67
Net Cash Position	Net Sell	-550.93

Technical Levels for Nifty 50 Companies

Company	Closing 26-02-2020	Buy/Sell Trigger	Resistance 1	Resistance 2	Support 1	Support 2
ADANI PORTS	358.40	357.93	362.97	367.53	353.37	348.33
ASIAN PAINT	1826.65	1830.55	1841.10	1855.55	1816.10	1805.55
AXIS BANK	729.40	729.05	736.10	742.80	722.35	715.30
BAJAJ-AUTO	2946.60	2946.87	2973.73	3000.87	2919.73	2892.87
BAJAJ FINSV	9387.00	9413.97	9467.93	9548.87	9333.03	9279.07
BAJ FINANCE	4810.00	4805.00	4842.75	4875.50	4772.25	4734.50
BHARTIARTL	535.95	531.88	543.47	550.98	524.37	512.78
BPCL	448.80	450.52	457.83	466.87	441.48	434.17
BRITANNIA	3041.35	3042.65	3068.60	3095.85	3015.40	2989.45
CIPLA	422.20	417.67	429.53	436.87	410.33	398.47
COALINDIA	173.80	174.73	176.82	179.83	171.72	169.63
DRREDDY	3075.35	3083.72	3107.13	3138.92	3051.93	3028.52
EICHER MOT	17156.95	17264.12	17492.83	17828.72	16928.23	16699.52
GAIL	108.05	109.92	112.23	116.42	105.73	103.42
GRASIM	702.80	708.33	716.67	730.53	694.47	686.13
HCLTECH	583.60	582.72	589.93	596.27	576.38	569.17
HDFC	2281.45	2281.50	2309.45	2337.45	2253.50	2225.55
HDFC BANK	1199.25	1196.53	1207.42	1215.58	1188.37	1177.48
HEROMOTOCO	2142.55	2157.85	2179.70	2216.85	2120.70	2098.85
HINDALCO	169.90	170.28	172.82	175.73	167.37	164.83
HINDUNILVR	2236.20	2231.42	2260.48	2284.77	2207.13	2178.07
ICICIBANK	523.70	525.08	527.97	532.23	520.82	517.93
INDUSINDBK	1135.00	1136.73	1148.27	1161.53	1123.47	1111.93
INFRA TEL	218.75	217.05	223.10	227.45	212.70	206.65
INFY	782.75	788.23	795.97	809.18	775.02	767.28
IOC	108.35	109.22	110.43	112.52	107.13	105.92
ITC	198.60	198.95	201.60	204.60	195.95	193.30
JSW STEEL	260.80	260.02	264.48	268.17	256.33	251.87
KOTAK BANK	1666.50	1667.07	1677.13	1687.77	1656.43	1646.37
LT	1211.15	1218.38	1230.77	1250.38	1198.77	1186.38
M&M	503.00	505.15	510.30	517.60	497.85	492.70
MARUTI	6234.85	6263.25	6340.45	6446.05	6157.65	6080.45
NESTLE IND	16240.15	16311.73	16473.42	16706.68	16078.47	15916.78
NTPC	109.10	109.63	111.02	112.93	107.72	106.33
ONGC	95.80	96.60	97.70	99.60	94.70	93.60
POWERGRID	185.85	186.07	188.18	190.52	183.73	181.62
RELIANCE	1392.00	1397.23	1407.12	1422.23	1382.12	1372.23
SBIN	328.20	327.73	331.27	334.33	324.67	321.13
SUN PHARMA	374.70	378.05	383.60	392.50	369.15	363.60
TATAMOTORS	144.55	145.38	147.07	149.58	142.87	141.18
TATA STEEL	416.30	415.67	420.03	423.77	411.93	407.57
TCS	2123.60	2133.48	2154.02	2184.43	2103.07	2082.53
TECHM	811.45	815.05	821.90	832.35	804.60	797.75
TITAN	1255.10	1255.73	1266.37	1277.63	1244.47	1233.83
ULTRACEMCO	4341.50	4350.48	4414.92	4488.33	4277.07	4212.63
UPL	563.00	562.93	569.87	576.73	556.07	549.13
VEDL	130.25	131.10	132.85	135.45	128.50	126.75
WIPRO	239.90	240.58	242.77	245.63	237.72	235.53
YES BANK	36.55	36.02	37.58	38.62	34.98	33.42
ZEEL	251.40	250.65	254.30	257.20	247.75	244.10

(Source – IRIS)

Guru Call: From the expert's desk

Company	Reco Date	Reco Price (Buy on dips)	High till date	Return%
Aditiya Birla Capital	22-Nov-19	95.75	115.35	20.47%
Asian Paints Ltd.	30-Mar-17	1068.10	1916.70	79.45%
Avenue Supermarts Ltd.	31-Jul-17	898.55	2560.00	184.90%
Axis Bank Ltd.	10-Apr-18	519.30	827.75	59.40%
Bajaj Finance Ltd.	11-Oct-18	2271.00	4923.40	116.79%
Bajaj Finserv Ltd	1-Nov-16	3416.80	9950.00	191.21%
Bajaj Holdings And Investment Ltd	19-May-16	1499.10	3950.00	163.49%
Bandhan Bank Ltd.	19-Dec-18	556.40	650.00	16.82%
Bharat Petroleum Corporation Ltd.	23-Oct-19	531.50	549.00	3.29%
Century Textile and Industries Ltd	25-Nov-16	326.00	656.90	101.50%
Cipla Ltd	20-Mar-17	597.30	678.45	13.59%
Colgate Palmolive	16-Sep-19	1314.00	1642.60	25.01%
Container Corporation	22-Nov-19	577.00	603.00	4.51%
Dabur India	22-Oct-19	466.00	523.25	12.29%
DLF Ltd	10-Apr-19	194.30	265.90	36.85%
Emami Limited	26-Jun-19	290.35	357.70	23.20%
Godrej Industries Ltd.	12-Feb-18	550.70	657.60	19.41%
Godrej Properties Ltd.	19-Dec-18	685.30	1189.25	73.54%
Grasim Industries Ltd.	31-May-17	1132.50	1331.00	17.53%
Havells India Ltd.	8-Dec-17	525.75	806.85	53.47%
Housing Development Finance Corp Ltd	19-Dec-17	1720.00	2499.90	45.34%
HDFC Asset Management Company Ltd.	19-Dec-18	1572.90	3844.00	144.39%
HDFC Bank Limited	10-Nov-16	639.00	1305.50	104.30%
HDFC Life Insurance Co Ltd	19-Jan-18	485.05	646.40	33.26%
Hindustan Unilever Ltd.	13-Nov-17	1290.70	2308.20	78.83%
ICICI Bank Ltd.	6-Apr-18	278.65	552.20	98.17%
ICICI Prudential Life Insurance Company Ltd.	28-Jun-18	375.80	537.30	42.97%
ICICI Lombard General Insurance	19-Sep-19	1154.90	1440.40	24.72%
Infosys Ltd.	17-Aug-17	487.60	847.00	73.71%
Kansai Nerolac Paints	16-Dec-19	529.85	551.00	3.99%
Kotak Mahindra Bank Ltd	10-Nov-16	822.10	1740.00	111.65%
Mahindra & Mahindra Ltd.	5-Jun-17	709.25	993.00	40.01%
Manappuram Finance Ltd.	24-Apr-18	119.20	194.80	63.42%
Mahanagar Gas	15-Nov-19	1029.00	1246.20	21.11%
Marico Ltd.	4-Apr-18	325.00	404.00	24.31%
Nestle India Ltd.	27-Sep-18	9729.40	16831.50	73.00%
Oberoi Realty Ltd.	23-Nov-17	508.60	641.70	26.17%
Phoenix Mills Limited	7-Jul-19	655.15	913.85	39.49%
Pidilite Industries Limited	4-Oct-16	681.60	1607.00	135.77%
Prestige Estates Projects Limited	6-Jun-19	286.70	426.00	48.59%
Nam-India	25-Nov-18	377.00	452.90	20.13%
Rites Ltd.	19-Dec-18	226.96	331.00	45.84%
RBL Bank	22-Nov-19	334.00	391.20	17.13%
State Bank Of India	28-Aug-18	308.00	373.80	21.36%
Shipping Corporation	22-Nov-19	64.00	65.95	3.05%
Tata Chemicals Limited	24-Dec-19	682.80	779.80	14.21%
Tata Global Beverages Ltd.	29-Jun-17	149.15	408.00	173.55%
Tata Consultancy Services Ltd.	8-Jan-18	1344.60	2296.20	70.77%
Trent Ltd.	19-Dec-18	348.40	794.00	127.90%
Ultratech Cement Ltd.	19-Dec-18	4084.60	4904.95	20.08%
Voltas Ltd.	27-Mar-18	613.90	741.00	20.70%
Whirlpool Of India Ltd.	7-Dec-16	872.25	2555.00	192.92%
Zee Entertainment	22-Nov-19	345.00	362.00	4.93%

NIFTY 50 STOCKS BELOW 200SMA

SCRIP NAME	SMA 200	CLOSING (26-02-2020)
WIPRO	257.50	239.90
ZEEL	308.29	251.40
LT	1389.91	1211.15
ITC	252.76	198.60
TATASTEEL	428.10	416.30
GRASIM	788.47	702.80
TATAMOTORS	157.32	144.55
CIPLA	488.22	422.20
M&M	571.10	503.00
HINDALCO	195.50	169.90
HDFCBANK	1210.58	1199.25
HEROMOTOCO	2536.25	2142.55
SUNPHARMA	419.70	374.70
IOC	135.73	108.35
AXISBANK	730.31	729.40
ONGC	136.66	95.80
VEDL	152.20	130.25
UPL	591.25	563.00
GAIL	134.66	108.05
EICHERMOT	19524.40	17156.95
INDUSINDBK	1406.32	1135.00
ADANIPTS	385.76	358.40
POWERGRID	196.15	185.85
TCS	2153.80	2123.60
NTPC	121.92	109.10
MARUTI	6745.21	6234.85
YESBANK	72.97	36.55
BAJAJ-AUTO	2979.89	2946.60
COALINDIA	209.75	173.80
INFRADEL	250.86	218.75

Bulk Deals (BSE)

Deal Date	Scrip Name	Client Name	Deal Type	Quantity	Price
26-Feb-20	INDIACEM	GOPIKISHAN SHIVKISHAN DAMANI	B	1592130	98.59
26-Feb-20	SADBHAV	BLUE DAIMOND PROPERTIES PRIVATE LIMITED	B	4200000	74.99
26-Feb-20	SADBHAV	ADITYA BIRLA SUN LIFE MUTUAL FUND	S	2692974	75.00

Bulk Deals (NSE)

Deal Date	Scrip Name	Client Name	Deal Type	Quantity	Price
26-Feb-20	Goldiam International Lim	GOLDIAM INTERNATIONAL LIMITED	BUY	243663	154.86
26-Feb-20	The India Cements Limited	RADHAKISHAN SHIVKISHAN DAMANI	BUY	2725468	104.16
26-Feb-20	The India Cements Limited	DAMANI GOPIKISHAN S	BUY	8371516	98.42
26-Feb-20	Sadbhav Engineering Limit	ACCOUNT YES SECURITIES INDIA LIMITED - ERROR	BUY	888046	79.46
26-Feb-20	Tata Chemicals Ltd.	TATA SONS PRIVATE LIMITED	BUY	1496738	742.44
26-Feb-20	Sadbhav Engineering Limit	ACCOUNT YES SECURITIES INDIA LIMITED - ERROR	SELL	888046	74.50
26-Feb-20	Sadbhav Engineering Limit	HDFC STANDARD LIFE INSURANCE CO LTD	SELL	890100	80.13

Note- Executed on 26th Feb 2020. Bulk Deal Buy/Sell done by fund house is considered.

Securities in Ban For Trade Date 27-02-2020
YESBANK
Weekly Expiry Most Active Nifty Call Option

Symbol	Expiry Date	Strike Price	Highest Open Interest (OI)
NIFTY	27-Feb-20	12000	4732800
NIFTY	27-Feb-20	11900	3549900
NIFTY	27-Feb-20	11800	3216375

Weekly Expiry Most Active Nifty Put Option

Symbol	Expiry Date	Strike Price	Highest Open Interest (OI)
NIFTY	27-Feb-20	11700	3033450
NIFTY	27-Feb-20	11600	2779725
NIFTY	27-Feb-20	11500	2434575

Research Analyst Registration No.
INH000002764
Contact
SMS: 'Arihant' to 56677
Website
www.arihantcapital.com
mail Id
arihant.research@arihantcapital.com

Arihant is Forbes Asia's '200 Best under a \$Billion' Company
'Best Emerging Commodities Broker' awarded by UTV Bloomberg

Disclaimer: This document has been prepared by Arihant Capital Markets Limited (hereinafter called as Arihant) and its subsidiaries and associated companies. This document does not constitute an offer or solicitation for the purchase and sale of any financial instrument by Arihant. Receipt and review of this document constitutes your agreement not to circulate, redistribute, retransmit or disclose to others the contents, opinions, conclusion, or information contained herein. This document has been prepared and issued on the basis of publicly available information, internally developed data and other sources believed to be reliable. Whilst meticulous care has been taken to ensure that the facts stated are accurate and opinions given are fair and reasonable, neither the analyst nor any employee of our company is in any way is responsible for its contents and nor is its accuracy or completeness guaranteed. This document is prepared for assistance only and is not intended to be and must not alone be taken as the basis for an investment decision. All recipients of this material should before dealing and or transacting in any of the products referred to in this material make their own investigation, seek appropriate professional advice. The investments discussed in this material may not be suitable for all investors. The recipient alone shall be fully responsible/are liable for any decision taken on the basis of this material. Arihant Capital Markets Ltd (including its affiliates) or its officers, directors, personnel and employees, including persons involved in the preparation or issuance of this material may; (a) from time to time, have positions in, and buy or sell or (b) be engaged in any other transaction and earn brokerage or other compensation in the financial instruments/products discussed herein or act as advisor or lender/borrower in respect of such securities/financial instruments/products or have other potential conflict of interest with respect to any recommendation and related information and opinions. The said persons may have acted upon and/or in a manner contradictory with the information contained here and may have a position or be otherwise interested in the investment referred to in this document before its publication. The user of this report assumes the entire risk of any use made of this data/report. Arihant especially states that it has no financial liability, whatsoever, to the users of this report.

Arihant Capital Markets Ltd

#1011 Solitaire Corporate Park Building No.10 1st Floor
 Andheri Ghatkopar Link Road Chakala Andheri (E) Mumbai-400093
 T. 022-42254800. Fax: 022-42254880
www.arihantcapital.com