

To join our research group on TELEGRAM, please click on the links - <https://bit.ly/37T17JR> and <https://bit.ly/2svtU7k>

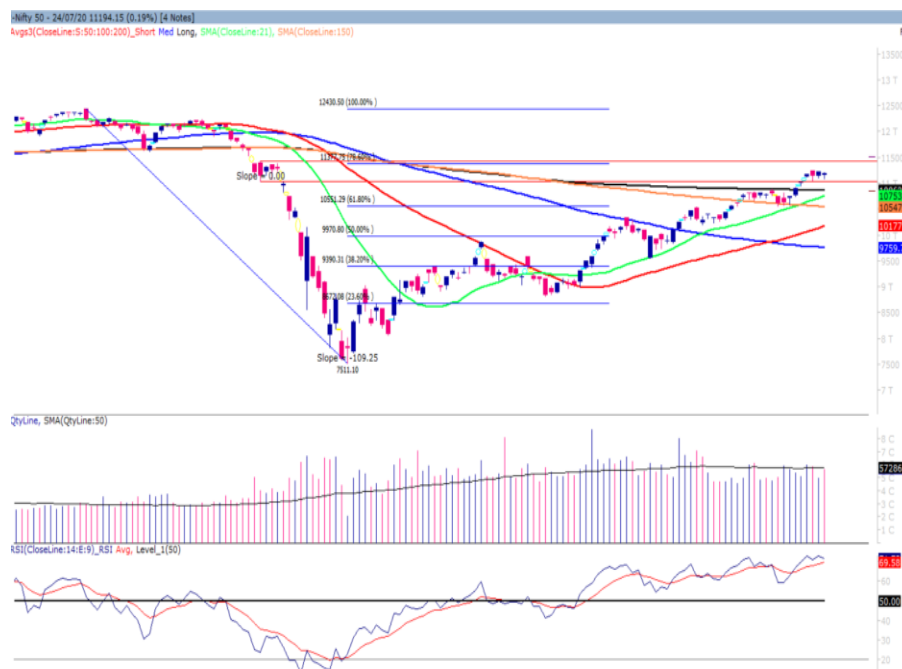
Monday, 27th July, 2020

Indian Indices	Last Price	(%) Chg
BSE	38128.90	-0.03
NSE	11194.15	-0.19
World Indices	Last Price	(%) Chg
Dow Jones	26469.88	-0.68
Nasdaq	10363.18	-0.94
Nikkei	22632.65	-0.53
Hang Seng	24759.60	0.24
FTSE	6123.82	-1.41
Commodity	Last Price	(%) Chg
GOLD(\$/ounce)	1917.80	1.07
Silver (\$/Ounce)	23.32	2.04
Crude (\$/BBL)	43.12	-0.51
Aluminium spot (\$/mt)	1702.50	0.28
Copper SPOT (\$/mt)	6454.50	0.80
Lead Spot (\$/MT)	1820.50	0.51
Natural gas \$/MMBtu	1.78	-1.55
Currency	Last Price	(%) Chg
USD-INR	74.85	0.02
EUR-INR	86.69	0.02
Bond	Last Price	(%) Chg
India 10 Yr Bond yield	5.82	0.33

52 Wk High (A group)			52 Wk Low (A group)		
Company	Close Price	52 Wk High	Company	Close Price	52 Wk Low
HCL	680	684	--	--	--
INFIBEAM	73.5	75.5	--	--	--
MPHASIS	1118	1173	--	--	--
GRANULES	303	311	--	--	--
MUTHOOT	1302	1345	--	--	--

Source: BSE

Market Technical Outlook



Nifty opened on a subdued and traded in a narrow range with negative bias throughout the day to close in red. We still maintain our stance that prices have entered the supply zone of 11036 to 11433 (shown in red in the above graph). At present we are witness sideways movement which gives no clear direction of trend. However, there is no sign of weakness but there is a possibility that profit booking near those level cannot be ruled out. In coming trading session if prices trade above 11230 level then it may test 11350 -11420 levels. On the downside, 11100 – 11000 levels may act as support for the day.

We still maintain our stance that Nifty is trading within the supply zone of 11050 – 11433 levels where profit booking cannot be ruled out. Hence, cautiously positive approach at current level should be adopted. However, stock specific move is likely to continue.

Foreign Institutional Investments (FII's) Activities

Name of Segment	Net Buyer/seller	Rs In Cr
Index Futures	Net Sell	-1196.47
Stock Futures	Net Sell	-1209.92
Net Future Position	Net Sell	-2406.39
Index Options	Net Sell	-690.93
Stock Options	Net Buy	145.69
Net Options Position	Net Sell	-545.24
FII In cash Segment	Net Buy	409.88
DII In cash Segment	Net Sell	-1002.98
Net Cash Position	Net Sell	-593.10

Guru Call: From the expert's desk

Company	Reco Date	Reco Price (Buy on dips)	High till date	Return%
Aditya Birla Capital	22-Nov-19	95.75	115.35	20.47%
Asian Paints Ltd.	30-Mar-17	1068.10	1916.70	79.45%
Avenue Supermarts Ltd.	31-Jul-17	898.55	2560.00	184.90%
Axis Bank Ltd.	10-Apr-18	519.30	827.75	59.40%
Bajaj Finance Ltd.	11-Oct-18	2271.00	4923.40	116.79%
Bajaj Finserv Ltd	1-Nov-16	3416.80	9950.00	191.21%
Bajaj Holdings And Investment Ltd	19-May-16	1499.10	3950.00	163.49%
Bandhan Bank Ltd.	19-Dec-18	556.40	650.00	16.82%
Bharat Petroleum Corporation Ltd.	23-Oct-19	531.50	549.00	3.29%
Century Textile and Industries Ltd	25-Nov-16	326.00	656.90	101.50%
Cipla Ltd	20-Mar-17	597.30	678.45	13.59%
Colgate Palmolive	16-Sep-19	1314.00	1642.60	25.01%
Container Corporation	22-Nov-19	577.00	603.00	4.51%
Dabur India	22-Oct-19	466.00	525.00	12.66%
DLF Ltd	10-Apr-19	194.30	265.90	36.85%
Emami Limited	26-Jun-19	290.35	357.70	23.20%
Godrej Industries Ltd.	12-Feb-18	550.70	657.60	19.41%
Godrej Properties Ltd.	19-Dec-18	685.30	1189.25	73.54%
Grasim Industries Ltd.	31-May-17	1132.50	1331.00	17.53%
Havells India Ltd.	8-Dec-17	525.75	806.85	53.47%
Housing Development Finance Corp Ltd	19-Dec-17	1720.00	2499.90	45.34%
HDFC Asset Management Company Ltd.	19-Dec-18	1572.90	3844.00	144.39%
HDFC Bank Limited	10-Nov-16	639.00	1305.50	104.30%
HDFC Life Insurance Co Ltd	19-Jan-18	485.05	646.40	33.26%
Hindustan Unilever Ltd.	13-Nov-17	1290.70	2308.20	78.83%
ICICI Bank Ltd.	6-Apr-18	278.65	552.20	98.17%
ICICI Prudential Life Insurance Company Ltd.	28-Jun-18	375.80	537.30	42.97%
ICICI Lombard General Insurance	19-Sep-19	1154.90	1440.40	24.72%
Infosys Ltd.	17-Aug-17	487.60	847.00	73.71%
Kansai Nerolac Paints	16-Dec-19	529.85	551.00	3.99%
Kotak Mahindra Bank Ltd	10-Nov-16	822.10	1740.00	111.65%
Mahindra & Mahindra Ltd.	5-Jun-17	709.25	993.00	40.01%
Manappuram Finance Ltd.	24-Apr-18	119.20	194.80	63.42%
Mahanagar Gas	15-Nov-19	1029.00	1246.20	21.11%
Marico Ltd.	4-Apr-18	325.00	404.00	24.31%
Nestle India Ltd.	27-Sep-18	9729.40	16835.15	73.03%
Oberoi Realty Ltd.	23-Nov-17	508.60	641.70	26.17%
Phoenix Mills Limited	7-Jul-19	655.15	979.00	49.43%
Pidilite Industries Limited	4-Oct-16	681.60	1661.00	143.69%
Prestige Estates Projects Limited	6-Jun-19	286.70	426.00	48.59%
Nam-India	25-Nov-18	377.00	452.90	20.13%
Rites Ltd.	19-Dec-18	226.96	331.00	45.84%
RBL Bank	22-Nov-19	334.00	391.20	17.13%
State Bank Of India	28-Aug-18	308.00	373.80	21.36%
Shipping Corporation	22-Nov-19	64.00	65.95	3.05%
Tata Chemicals Limited	24-Dec-19	296.89	339.70	14.42%
Tata Consumer	29-Jun-17	149.15	408.00	173.55%
Tata Consultancy Services Ltd.	8-Jan-18	1344.60	2296.20	70.77%
Trent Ltd.	19-Dec-18	348.40	794.00	127.90%
Ultratech Cement Ltd.	19-Dec-18	4084.60	4904.95	20.08%
Voltas Ltd.	27-Mar-18	613.90	741.00	20.70%
Whirlpool Of India Ltd.	7-Dec-16	872.25	2555.00	192.92%
Zee Entertainment	22-Nov-19	345.00	362.00	4.93%

Technical Levels for Nifty 50 Companies

Company	Closing 24-07-2020	Buy/Sell Trigger	Resistance 1	Resistance 2	Support 1	Support 2
ADANI PORTS	309.4	309.57	313.78	318.17	305.18	300.97
ASIAN PAINT	1712.05	1707.02	1732.03	1752.02	1687.03	1662.02
AXIS BANK	445.6	447.92	454.28	462.97	439.23	432.87
BAJAJ-AUTO	2985.5	2997.83	3017.67	3049.83	2965.67	2945.83
BAJAJ FINSV	6270.3	6283.43	6341.87	6413.43	6211.87	6153.43
BAJ FINANCE	3251.85	3253.95	3287.9	3323.95	3217.9	3183.95
BHARTIARTL	559.45	560.75	566.1	572.75	554.1	548.75
BPCL	448.4	452.4	459.5	470.6	441.3	434.2
BRITANNIA	3818.45	3812.12	3856.23	3894.02	3774.33	3730.22
CIPLA	666.05	668.42	678.63	691.22	655.83	645.62
COALINDIA	131.6	131.5	133	134.4	130.1	128.6
DRREDDY	4065.95	4099.17	4146.68	4227.42	4018.43	3970.92
EICHER MOT	20800.35	20623.78	21047.57	21294.78	20376.57	19952.78
GAIL	99.55	100.28	101.77	103.98	98.07	96.58
GRASIM	582.7	587.03	592.47	602.23	577.27	571.83
HCLTECH	679.95	668.55	696.2	712.45	652.3	624.65
HDFC	1841.3	1838.7	1860.4	1879.5	1819.6	1797.9
HDFC BANK	1119.1	1114.42	1127.58	1136.07	1105.93	1092.77
HEROMOTOCO	2740.7	2754.6	2781.1	2821.5	2714.2	2687.7
HINDALCO	156.2	157.15	160	163.8	153.35	150.5
HINDUNILVR	2209.3	2199.12	2230.18	2251.07	2178.23	2147.17
ICICIBANK	381.8	380.88	389.62	397.43	373.07	364.33
INDUSINDBK	522.25	519.65	539.3	556.35	502.6	482.95
INFRA TEL	195.7	196	199.7	203.7	192	188.3
INFY	922.85	917.28	931.32	939.78	908.82	894.78
IOC	92.8	93.07	94.33	95.87	91.53	90.27
ITC	199.6	199.53	201.77	203.93	197.37	195.13
JSW STEEL	205	206.62	209.98	214.97	201.63	198.27
KOTAK BANK	1350	1352.2	1362.8	1375.6	1339.4	1328.8
LT	904.4	905.65	913.25	922.1	896.8	889.2
M&M	598.7	596.58	603.07	607.43	592.22	585.73
MARUTI	6000.7	5993.38	6054.67	6108.63	5939.42	5878.13
NESTLE IND	17251.85	17207.28	17454.57	17657.28	17004.57	16757.28
NTPC	89.4	89.48	90.42	91.43	88.47	87.53
ONGC	81	81.22	82.18	83.37	80.03	79.07
POWERGRID	182	181.3	183.95	185.9	179.35	176.7
RELIANCE	2146.15	2122.32	2186.83	2227.52	2081.63	2017.12
SBIN	191.95	192.97	195.28	198.62	189.63	187.32
SHREECEM	21332.75	21364.25	21568.5	21804.25	21128.5	20924.25
SUN PHARMA	485.6	488.22	495.18	504.77	478.63	471.67
TATAMOTORS	103.75	103.98	105.27	106.78	102.47	101.18
TATA STEEL	346.1	346.15	349.75	353.4	342.5	338.9
TCS	2157.4	2148.5	2171.9	2186.4	2134	2110.6
TECHM	652.6	644.42	663.58	674.57	633.43	614.27
TITAN	1057.6	1052.1	1071.5	1085.4	1038.2	1018.8
ULTRACEMCO	3782.5	3785.63	3835.92	3889.33	3732.22	3681.93
UPL	454.15	453.08	462.07	469.98	445.17	436.18
VEDL	112.05	111.87	113.98	115.92	109.93	107.82
WIPRO	270.55	269.3	273.05	275.55	266.8	263.05
ZEEL	151.7	153.72	156.93	162.17	148.48	145.27

NIFTY 50 STOCKS BELOW 200SMA

SCRIP NAME	SMA 200	CLOSING (24-07-2020)
ZEEL	219.49	151.7
LT	1129.09	904.9
ITC	210.63	199.6
TATASTEEL	366.23	346.1
SBIN	253.14	191.95
GRASIM	660.35	583.05
TATAMOTORS	129.9	103.75
HDFC	2035.8	1841
HINDALCO	164.98	156.2
ICICIBANK	434.14	381.8
ASIANPAINT	1733.48	1712.05
IOC	106.66	92.8
AXISBANK	583.02	445.6
ONGC	101.5	81
TITAN	1093.48	1057.6
VEDL	120.21	112.05
UPL	485.93	454.15
GAIL	108.26	99.6
INDUSINDBK	940.75	522.25
BAJFINANCE	3468.03	3251.85
ADANI PORTS	343.3	309.4
ULTRACEMCO	3951.1	3782.5
KOTAKBANK	1475.25	1350
TECHM	670.43	652.6
JSWSTEEL	220.37	205
NTPC	104.44	89.3
MARUTI	6287.27	5990.3
BAJAJFINSV	7381.28	6270.3
COALINDIA	167.72	131.6
INFRA TEL	218.59	196.25
--	--	--
--	--	--
--	--	--
--	--	--

Weekly Expiry Most Active Nifty Call Option

Symbol	Expiry Date	Strike Price	Highest Open Interest (OI)
NIFTY	30-Jul-2020	11300	4,385,025
NIFTY	30-Jul-2020	11250	3,985,575
NIFTY	30-Jul-2020	11500	2,313,900

Weekly Expiry Most Active Nifty Put Option

Symbol	Expiry Date	Strike Price	Highest Open Interest (OI)
NIFTY	30-Jul-2020	11000	4,433,625
NIFTY	30-Jul-2020	11200	4,344,750
NIFTY	30-Jul-2020	11100	4,008,000

Securities in Ban For Trade Date 27-07-2020

ADANIEN, BHEL, GLENMARK, GMRINFRA, IBULHSGFIN, IDEA, NATIONALUM, RBLBANK, SAIL, SUNTV

Bulk Deals (BSE)

Deal Date	Scrip Name	Client Name	Deal Type	Quantity	Price
24-Jul-20	SEQUENT	AGNUS HOLDINGS PRIVATE LIMITED	B	4425000	110.50
24-Jul-20	SEQUENT	JSRAMAPRASAD JSRAMAPRASAD	S	1825000	110.50
24-Jul-20	SEQUENT	PRONOMZ VENTURES LLP	S	2600000	110.50

Bulk Deals (NSE)

Deal Date	Scrip Name	Client Name	Deal Type	Quantity	Price
24-Jul-20	PARAGMILK	GOLDMAN SACHS INTERNATIONAL EQUITY FUND	SELL	1150770	85.10

Note- Executed on 24th Jul 2020. Bulk Deal Buy/Sell done by fund house is considered.

Research Analyst Registration No.

INH000002764

Contact

SMS: 'Arihant' to 56677

Website
www.arihantcapital.com
mail Id
arihant.research@arihantcapital.com

**Arihant is Forbes Asia's '200 Best under a \$Billion' Company
 'Best Emerging Commodities Broker' awarded by UTV Bloomberg**

Disclaimer: This document has been prepared by Arihant Capital Markets Limited (hereinafter called as Arihant) and its subsidiaries and associated companies. This document does not constitute an offer or solicitation for the purchase and sale of any financial instrument by Arihant. Receipt and review of this document constitutes your agreement not to circulate, redistribute, retransmit or disclose to others the contents, opinions, conclusion, or information contained herein. This document has been prepared and issued on the basis of publicly available information, internally developed data and other sources believed to be reliable. Whilst meticulous care has been taken to ensure that the facts stated are accurate and opinions given are fair and reasonable, neither the analyst nor any employee of our company is in any way is responsible for its contents and nor is its accuracy or completeness guaranteed. This document is prepared for assistance only and is not intended to be and must not alone be taken as the basis for an investment decision. All recipients of this material should before dealing and or transacting in any of the products referred to in this material make their own investigation, seek appropriate professional advice. The investments discussed in this material may not be suitable for all investors. The recipient alone shall be fully responsible/are liable for any decision taken on the basis of this material. Arihant Capital Markets Ltd (including its affiliates) or its officers, directors, personnel and employees, including persons involved in the preparation or issuance of this material may; (a) from time to time, have positions in, and buy or sell or (b) be engaged in any other transaction and earn brokerage or other compensation in the financial instruments/products discussed herein or act as advisor or lender/borrower in respect of such securities/financial instruments/products or have other potential conflict of interest with respect to any recommendation and related information and opinions. The said persons may have acted upon and/or in a manner contradictory with the information contained here and may have a position or be otherwise interested in the investment referred to in this document before its publication. The user of this report assumes the entire risk of any use made of this data/report. Arihant especially states that it has no financial liability, whatsoever, to the users of this report.

Arihant Capital Markets Ltd

#1011 Solitaire Corporate Park Building No.10 1st Floor
 Andheri Ghatkopar Link Road Chakala Andheri (E) Mumbai-400093
 T. 022-42254800. Fax: 022-42254880
www.arihantcapital.com