

To join our research group on TELEGRAM, please click on the links - <https://bit.ly/2Rt4NyS> and <https://bit.ly/3ciqvDn>

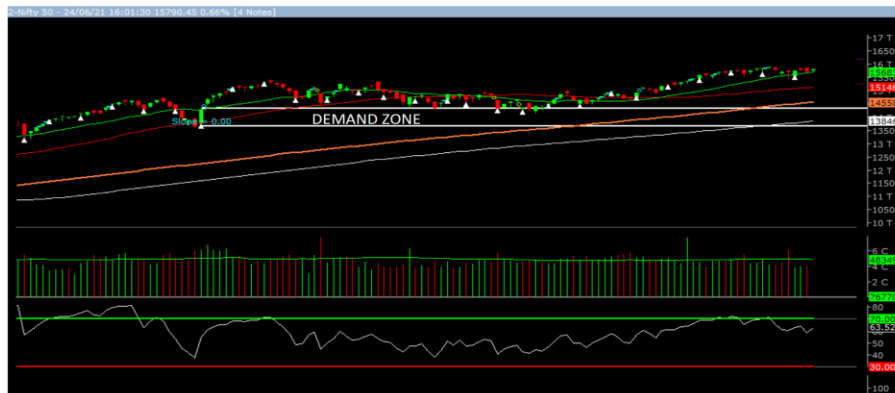
Monday, 28<sup>th</sup> June, 2021

Indian Indices	Last Price	(%) Chg
NSE	15860.35	0.44
BSE	52925.04	0.43
World Indices	Last Price	(%) Chg
Dow Jones	34433.84	0.69
Nasdaq	14360.39	-0.06
Nikkei	28984.93	-0.28
Hang Seng	--	--
FTSE	7136.07	0.37
Commodity	Last Price	(%) Chg
GOLD(\$/ounce)	1774.80	-0.17
Silver (\$/Ounce)	25.96	-0.49
Crude (\$/BBL)	76.17	-0.01
Aluminium spot (\$/mt)	2473.25	-0.90
Copper SPOT (\$/mt)	9388.50	-0.47
Lead Spot (\$/MT)	2194.25	-1.68
Natural gas \$/MMBtu	3.55	0.85
Currency	Last Price	(%) Chg
USD-INR	74.22	0.03
EUR-INR	88.66	0.05
Bond	Last Price	(%) Chg
India 10 Yr Bond yield	6.03	0.27

52 Wk High (A group)			52 Wk Low (A group)		
Company	Close Price	52 Wk High	Company	Close Price	52 Wk Low
APOLOHSP	3438	3464	--	--	--
BALRMCHI	350	363	--	--	--
BFUTILITI	526	538	--	--	--
BHARATELE	175	175	--	--	--
COFORGE	4080	4155	--	--	--

Source: BSE

### Market Technical Outlook



Nifty, opened higher, traded with choppiness but finally managed to close in green. We continue to maintain our stance that on the daily chart we are observing series of narrow range body formation which suggests that markets are cautiously positive at current level. In coming trading session if Nifty for first hour trades 15870 level then it may test 15950 - 16150 levels. On the downside, 15760- 15680 levels may act as support for the day.

**We still maintain our stance that stock specific activity is likely to continue in small and Mid-cap stocks.**

### Foreign Institutional Investments (FII's) Activities

Name of Segment	Net Buyer/seller	Rs In Cr
Index Futures	Net Sell	-857.72
Stock Futures	Net Buy	43.50
<b>Net Future Position</b>	<b>Net Sell</b>	<b>-814.22</b>
Index Options	Net Sell	-147.01
Stock Options	Net Sell	-297.05
<b>Net Options Position</b>	<b>Net Sell</b>	<b>-444.06</b>
FII In cash Segment	Net Sell	-678.84
DII In cash Segment	Net Buy	1832.76
<b>Net Cash Position</b>	<b>Net Buy</b>	<b>1153.92</b>

**Guru Call: From the expert's desk**

Company	Reco Date	Reco Price (Buy on dips)	High till date	Return%
Aarti drugs	21-Aug-20	783.00	1026.95	31.16%
Aditya Birla Fashion and Retail Ltd	08-Feb-21	164.40	172.25	4.77%
Aegis Logistics	11-Sep-20	204.05	318.95	56.31%
Ajanta Pharma	04-Aug-20	1661.05	1878.00	13.06%
Alkem	08-Jul-20	2427.00	3551.50	46.33%
Asian Paints Ltd.	30-Mar-17	1068.10	2873.45	169.02%
Avenue Supermarts Ltd.	31-Jul-17	898.55	3242.00	260.80%
Axis Bank Ltd.	10-Apr-18	519.30	827.75	59.40%
Bajaj Consumer Care Ltd	03-Feb-21	255.80	284.00	11.02%
Bajaj Finance Ltd.	11-Oct-18	2271.00	5822.20	156.37%
Bajaj Finserv Ltd	1-Nov-16	3416.80	10579.00	209.62%
Bajaj Holdings And Investment Ltd	19-May-16	1499.10	3950.00	163.49%
Bajaj-Auto	12-Jun-20	2782.00	4361.40	56.77%
Bandhan Bank Ltd.	19-Dec-18	556.40	650.00	16.82%
Berger Paints India Ltd	07-Dec-20	672.20	822.95	22.43%
Bharti Airtel Limited	03-Dec-20	479.90	623.00	29.82%
Britannia	12-June-20	3366.00	4010.00	19.13%
Cadila	03-Apr-20	274.00	509.20	85.84%
CAMS	08-Oct-20	1334.90	2023.30	51.57%
CDSL	17-Sep-20	485.90	592.90	22.02%
Ceat Limited	28-Jan-21	1541.05	1763.00	14.40%
Century Textile and Industries Ltd	25-Nov-16	326.00	656.90	101.50%
CG Power and Industrial Solutions Ltd	10-Feb-21	45.25	54.70	20.88%
Chola finance	25-Sep-20	238.70	550.75	130.73%
Chola Holding	23-Sep-20	391.80	607.00	54.93%
Cipla Ltd	20-Mar-17	597.30	878.90	47.15%
Colgate Palmolive	16-Sep-19	1314.00	1676.00	27.55%
Crompton Greaves Consumer	11-Jun-20	225.00	456.00	102.67%
Dabur India	22-Oct-19	466.00	552.55	18.57%
DFM Foods Ltd	03-Feb-21	409.05	429.60	5.02%
Divislab	04-Aug-20	2641.00	3914.95	48.24%
DLF Ltd	10-Apr-19	194.30	328.20	68.91%
Dr Reddy	04-Aug-20	4530.00	5512.65	21.69%
Emami Limited	26-Jun-19	290.35	519.95	79.08%
Finolex Cables Ltd	08-Feb-21	368.80	410.00	11.17%
Fortis	14-Jul-20	127.00	182.10	43.39%
Galaxy Surface	01-Jul-20	1557.00	2380.90	52.92%
Glaxosmithkline Pharmaceuticals Ltd	27-Aug-20	1455.75	1807.50	24.16%
Godrej Consumer Products Limited	16-Jun-20	634.00	808.35	27.50%
Godrej Industries Ltd.	12-Feb-18	550.70	657.60	19.41%
Godrej Properties Ltd	04-Dec-20	1200.30	1546.00	28.80%
HDFC Asset Management Company Ltd.	19-Dec-18	1572.90	3844.00	144.39%
HDFC Bank Limited	10-Nov-16	639.00	1641.00	156.81%
HDFC Life Insurance Co Ltd	19-Jan-18	485.05	731.00	50.71%
Hero Motocorp Ltd	29-Sep-20	3174.95	3629.05	14.30%
Hindustan Unilever Ltd.	13-Nov-17	1290.70	2614.30	102.55%
Housing Development Finance Corp Ltd	19-Dec-17	1720.00	2896.00	68.37%
ICICI Bank Ltd.	06-Apr-18	278.65	679.40	143.82%
ICICI Lombard General Insurance	19-Sep-19	1154.90	1626.45	40.83%
ICICI Prudential Life Insurance Company Ltd.	28-Jun-18	375.80	537.90	43.13%
ICICI Securities Ltd	24-Sep-20	466.65	498.80	6.89%

**Guru Call: From the expert's desk**

Company	Reco Date	Reco Price (Buy on dips)	High till date	Return%
Indusindbnk	08-Jun-20	451.00	1096.50	143.13%
Infosys Ltd.	17-Aug-17	487.60	1392.80	185.64%
Ipca Lab	11-Aug-20	2099.00	2460.00	17.20%
Jk Cement	19-Jun-20	1378.00	2915.00	111.54%
JK Lakshmi Cement	03-Jul-20	276.00	390.00	41.30%
Justdial	07-Oct-20	385.60	766.00	98.65%
Jyoti lab	05-Aug-20	132.90	166.00	24.91%
Kansai Nerolac Paints	16-Dec-19	529.85	680.00	28.34%
Kotak Mahindra Bank Ltd	10-Nov-16	822.10	2049.00	149.24%
L&T Finance Holdings Ltd	03-Dec-20	84.05	105.20	25.16%
LIC Housing Finance Limited	06-Jan-21	408.30	487.40	19.37%
Mahanagar Gas	15-Nov-19	1029.00	1246.20	21.11%
Mahindra & Mahindra Fin. Services Ltd.	08-Dec-20	175.25	224.30	27.99%
Mahindra & Mahindra Ltd.	05-Jun-17	709.25	993.00	40.01%
Manappuram Finance Ltd.	24-Apr-18	119.20	194.80	63.42%
Marico Ltd.	04-Apr-18	325.00	433.95	33.52%
Maruti Suzuki India Ltd	13-Aug-20	5988.85	8329.00	39.08%
Nam-India	25-Nov-18	377.00	452.90	20.13%
Nestle India Ltd.	27-Sep-18	9729.40	18844.00	93.68%
Oberoi Realty Ltd.	23-Nov-17	508.60	641.70	26.17%
PEL	02-Sep-20	1246.25	1931.95	55.02%
Pfizer	22-Jul-20	4150.00	5900.00	42.17%
Phoenix Mills Limited	07-Jul-19	655.15	979.00	49.43%
Pidilite Industries Limited	04-Oct-16	681.60	1842.00	170.25%
Polycab India Ltd	06-Jan-21	1176.10	1364.00	15.98%
Raymond	25-Sep-20	263.55	382.65	45.19%
RBL Bank	25-Sep-20	164.95	274.30	66.29%
Reliance	22-Apr-20	1351.00	2369.35	75.38%
Rites Ltd.	19-Dec-18	226.96	331.00	45.84%
SBI Card	16-Jul-20	719.00	1095.25	52.33%
SBI Life	20-May-20	715.00	954.50	33.50%
State Bank of India	03-Feb-21	335.95	427.70	27.31%
Sun Pharma	07-Aug-20	525.00	654.40	24.65%
Suprajit Engineering Ltd.	08-Feb-21	244.30	285.05	16.68%
Syngene	24-Sep-20	565.70	644.55	13.94%
Tata Chemicals Limited	24-Dec-19	296.89	638.90	115.20%
Tata Consultancy Services Ltd.	08-Jan-18	1344.60	3339.80	148.39%
Tata Consumer	29-Jun-17	149.15	645.70	332.92%
Trent Ltd.	19-Dec-18	348.40	844.90	142.51%
Ultratech Cement Ltd.	19-Dec-18	4084.60	6589.00	61.31%
Voltas Ltd.	27-Mar-18	613.90	1132.00	84.39%
Whirlpool Of India Ltd.	07-Dec-16	872.25	2787.00	219.52%
Zee Entertainment	22-Nov-19	345.00	362.00	4.93%

**NIFTY 50 STOCKS BELOW 200SMA**

SCRIP NAME	SMA 200	CLOSING (25-06-2021)
HEROMOTOCO	3092.86	2939.2
KOTAKBANK	1740.78	1735
--	--	--
--	--	--
--	--	--
--	--	--
--	--	--
--	--	--

**Weekly Expiry Most Active Nifty Call Option**

Symbol	Expiry Date	Strike Price	Highest Open Interest (Contracts)
NIFTY	01-July-2021	16000	42,530
NIFTY	01-July-2021	16500	35,849
NIFTY	01-July-2021	16200	33,340

**Weekly Expiry Most Active Nifty Put Option**

Symbol	Expiry Date	Strike Price	Highest Open Interest (Contracts)
NIFTY	01-July-2021	15000	44,607
NIFTY	01-July-2021	15700	32,592
NIFTY	01-July-2021	15800	32,385

**Securities in Ban For Trade Date 28-06-2021**

N/A

**IPO Listing Today**
**Company Name: Dodla Dairy Limited IPO, BSE Code: 543306, NSE Symbol: DODLA, Issue Price: Rs 428 per share, Series: EQ**
**Company Name: Krishna Institute of Medical Sciences Limited, BSE Code: 543308, NSE Symbol: KIMS, Issue Price: Rs 825 per share, Series: EQ**
**Bulk Deals (BSE)**

Deal Date	Scrip Name	Client Name	Deal Type	Quantity	Price
25-Jun-21	DCMSRMIND	ABAKKUS ASSET MANAGER LLP	B	117922	361.00
25-Jun-21	DCMSRMIND	ABAKKUS EMERGING OPPORTUNITIES FUND - 1	B	518000	361.00
25-Jun-21	DCMSRMIND	RUCHIT BHARAT PATEL	S	142603	371.00
25-Jun-21	DCMSRMIND	FINQUEST FINANCIAL SOLUTIONS PVT. LTD.	S	238129	361.00
25-Jun-21	DCMSRMIND	MINAL BHARAT PATEL	S	397032	361.87
25-Jun-21	DHANVARSHA	CITRUS GLOBAL ARBITRAGE FUND	B	140,000	799.99
25-Jun-21	IWEL	ENAM SECURITIES	B	549,518	276.20
25-Jun-21	IWEL	MEENU MANGAL JAINBHANSHALI	S	549,518	276.20

**Bulk Deals (BSE)**

N/A

**Note- Executed on 25<sup>th</sup> June 2021. Bulk Deal Buy/Sell done by fund house is considered**

Research Analyst Registration No.	Contact	Website	mail Id
INH000002764	SMS: 'Arihant' to 56677	<a href="http://www.arihantcapital.com">www.arihantcapital.com</a>	<a href="mailto:arihant.research@arihantcapital.com">arihant.research@arihantcapital.com</a>

**Arihant is Forbes Asia's '200 Best under a \$Billion' Company  
 'Best Emerging Commodities Broker' awarded by UTV Bloomberg**

**Disclaimer:** This document has been prepared by Arihant Capital Markets Limited (hereinafter called as Arihant) and its subsidiaries and associated companies. This document does not constitute an offer or solicitation for the purchase and sale of any financial instrument by Arihant. Receipt and review of this document constitutes your agreement not to circulate, redistribute, retransmit or disclose to others the contents, opinions, conclusion, or information contained herein. This document has been prepared and issued on the basis of publicly available information, internally developed data and other sources believed to be reliable. Whilst meticulous care has been taken to ensure that the facts stated are accurate and opinions given are fair and reasonable, neither the analyst nor any employee of our company is in any way is responsible for its contents and nor is its accuracy or completeness guaranteed. This document is prepared for assistance only and is not intended to be and must not alone be taken as the basis for an investment decision. All recipients of this material should before dealing and or transacting in any of the products referred to in this material make their own investigation, seek appropriate professional advice. The investments discussed in this material may not be suitable for all investors. The recipient alone shall be fully responsible/are liable for any decision taken on the basis of this material. Arihant Capital Markets Ltd (including its affiliates) or its officers, directors, personnel and employees, including persons involved in the preparation or issuance of this material may; (a) from time to time, have positions in, and buy or sell or (b) be engaged in any other transaction and earn brokerage or other compensation in the financial instruments/products discussed herein or act as advisor or lender/borrower in respect of such securities/financial instruments/products or have other potential conflict of interest with respect to any recommendation and related information and opinions. The said persons may have acted upon and/or in a manner contradictory with the information contained here and may have a position or be otherwise interested in the investment referred to in this document before its publication. The user of this report assumes the entire risk of any use made of this data/report. Arihant especially states that it has no financial liability, whatsoever, to the users of this report.

**Arihant Capital Markets Ltd**

#1011 Solitaire Corporate Park Building No.10 1<sup>st</sup> Floor  
 Andheri Ghatkopar Link Road Chakala Andheri (E) Mumbai-400093  
 T. 022-42254800. Fax: 022-42254880  
[www.arihantcapital.com](http://www.arihantcapital.com)