

To join our research group on TELEGRAM, please click on the links - <https://bit.ly/37T17JR> and <https://bit.ly/2svtU7k>

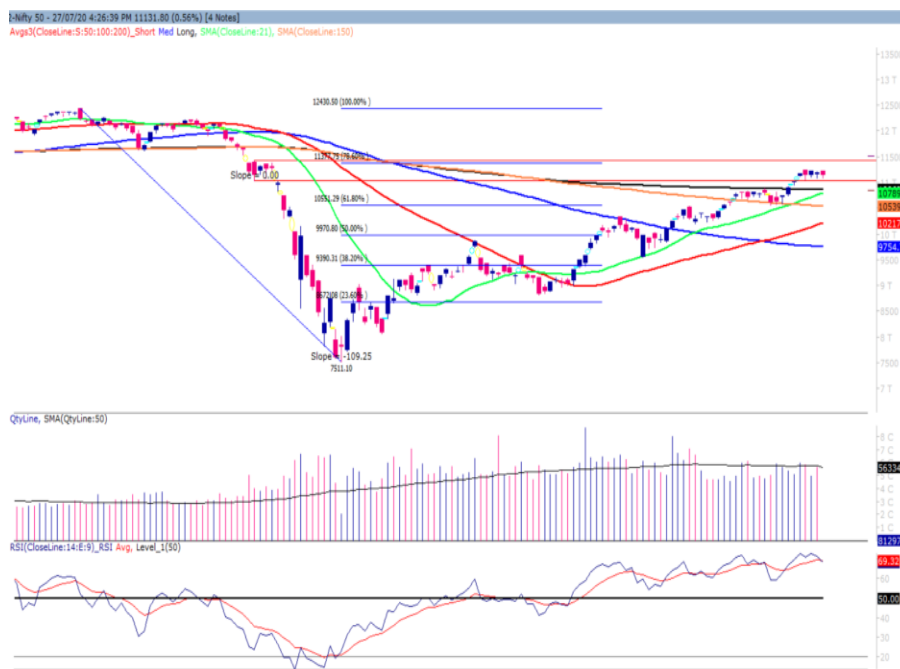
Tuesday, 28<sup>th</sup> July, 2020

Indian Indices	Last Price	(%) Chg
BSE	37934.73	-0.51
NSE	11131.80	-0.56
World Indices	Last Price	(%) Chg
Dow Jones	26584.77	0.43
Nasdaq	10536.27	1.67
Nikkei	22792.76	0.34
Hang Seng	24833.17	0.93
FTSE	6104.88	-0.31
Commodity	Last Price	(%) Chg
GOLD(\$/ounce)	1966.60	1.84
Silver (\$/Ounce)	26.02	6.20
Crude (\$/BBL)	43.65	0.55
Aluminium spot (\$/mt)	1715.50	0.34
Copper SPOT (\$/mt)	6490.25	0.94
Lead Spot (\$/MT)	1862.50	0.30
Natural gas \$/MMBtu	1.73	-0.17
Currency	Last Price	(%) Chg
USD-INR	74.81	-0.06
EUR-INR	87.68	1.14
Bond	Last Price	(%) Chg
India 10 Yr Bond yield	5.86	0.74

52 Wk High (A group)			52 Wk Low (A group)		
Company	Close Price	52 Wk High	Company	Close Price	52 Wk Low
COROMAN	789	829	--	--	--
HCLTECH	701	704	--	--	--
MPHASIS	1128	1206	--	--	--
INFOSYS	947	952	--	--	--
JUBILANT	736	760	--	--	--

Source: BSE

### Market Technical Outlook



Nifty opened higher but was unable to sustain the opening gains which led the indices to close in red. We still maintain our stance that prices have entered the supply zone of 11036 to 11433 (shown in red in the above graph). At present we are witnessing sideways movement which gives no clear direction of trend. However, there is no sign of weakness but there is a possibility that profit booking near those level cannot be ruled out. In coming trading session if prices trade above 11199 level then it may test 11350 -11420 levels. On the downside, 11100 – 11000 levels may act as support for the day.

**We maintain our stance that Nifty is trading within the supply zone of 11050 – 11433 levels where profit booking cannot be ruled out. Hence, cautiously positive approach at current level should be adopted. However, stock specific move is likely to continue.**

### Foreign Institutional Investments (FII's) Activities

Name of Segment	Net Buyer/seller	Rs In Cr
Index Futures	Net Buy	499.92
Stock Futures	Net Sell	-147.80
<b>Net Future Position</b>	<b>Net Buy</b>	<b>352.12</b>
Index Options	Net Buy	206.80
Stock Options	Net Buy	115.87
<b>Net Options Position</b>	<b>Net Buy</b>	<b>322.67</b>
FII In cash Segment	Net Sell	-453.31
DII In cash Segment	Net Sell	-977.88
<b>Net Cash Position</b>	<b>Net Sell</b>	<b>-1431.19</b>

**Guru Call: From the expert's desk**

Company	Reco Date	Reco Price (Buy on dips)	High till date	Return%
Aditiya Birla Capital	22-Nov-19	95.75	115.35	20.47%
Asian Paints Ltd.	30-Mar-17	1068.10	1916.70	79.45%
Avenue Supermarts Ltd.	31-Jul-17	898.55	2560.00	184.90%
Axis Bank Ltd.	10-Apr-18	519.30	827.75	59.40%
Bajaj Finance Ltd.	11-Oct-18	2271.00	4923.40	116.79%
Bajaj Finserv Ltd	1-Nov-16	3416.80	9950.00	191.21%
Bajaj Holdings And Investment Ltd	19-May-16	1499.10	3950.00	163.49%
Bandhan Bank Ltd.	19-Dec-18	556.40	650.00	16.82%
Bharat Petroleum Corporation Ltd.	23-Oct-19	531.50	549.00	3.29%
Century Textile and Industries Ltd	25-Nov-16	326.00	656.90	101.50%
Cipla Ltd	20-Mar-17	597.30	678.45	13.59%
Colgate Palmolive	16-Sep-19	1314.00	1642.60	25.01%
Container Corporation	22-Nov-19	577.00	603.00	4.51%
Dabur India	22-Oct-19	466.00	525.00	12.66%
DLF Ltd	10-Apr-19	194.30	265.90	36.85%
Emami Limited	26-Jun-19	290.35	357.70	23.20%
Godrej Industries Ltd.	12-Feb-18	550.70	657.60	19.41%
Godrej Properties Ltd.	19-Dec-18	685.30	1189.25	73.54%
Grasim Industries Ltd.	31-May-17	1132.50	1331.00	17.53%
Havells India Ltd.	8-Dec-17	525.75	806.85	53.47%
Housing Development Finance Corp Ltd	19-Dec-17	1720.00	2499.90	45.34%
HDFC Asset Management Company Ltd.	19-Dec-18	1572.90	3844.00	144.39%
HDFC Bank Limited	10-Nov-16	639.00	1305.50	104.30%
HDFC Life Insurance Co Ltd	19-Jan-18	485.05	646.40	33.26%
Hindustan Unilever Ltd.	13-Nov-17	1290.70	2308.20	78.83%
ICICI Bank Ltd.	6-Apr-18	278.65	552.20	98.17%
ICICI Prudential Life Insurance Company Ltd.	28-Jun-18	375.80	537.30	42.97%
ICICI Lombard General Insurance	19-Sep-19	1154.90	1440.40	24.72%
Infosys Ltd.	17-Aug-17	487.60	847.00	73.71%
Kansai Nerolac Paints	16-Dec-19	529.85	551.00	3.99%
Kotak Mahindra Bank Ltd	10-Nov-16	822.10	1740.00	111.65%
Mahindra & Mahindra Ltd.	5-Jun-17	709.25	993.00	40.01%
Manappuram Finance Ltd.	24-Apr-18	119.20	194.80	63.42%
Mahanagar Gas	15-Nov-19	1029.00	1246.20	21.11%
Marico Ltd.	4-Apr-18	325.00	404.00	24.31%
Nestle India Ltd.	27-Sep-18	9729.40	16835.15	73.03%
Oberoi Realty Ltd.	23-Nov-17	508.60	641.70	26.17%
Phoenix Mills Limited	7-Jul-19	655.15	979.00	49.43%
Pidilite Industries Limited	4-Oct-16	681.60	1661.00	143.69%
Prestige Estates Projects Limited	6-Jun-19	286.70	426.00	48.59%
Nam-India	25-Nov-18	377.00	452.90	20.13%
Rites Ltd.	19-Dec-18	226.96	331.00	45.84%
RBL Bank	22-Nov-19	334.00	391.20	17.13%
State Bank Of India	28-Aug-18	308.00	373.80	21.36%
Shipping Corporation	22-Nov-19	64.00	65.95	3.05%
Tata Chemicals Limited	24-Dec-19	296.89	339.70	14.42%
Tata Consumer	29-Jun-17	149.15	408.00	173.55%
Tata Consultancy Services Ltd.	8-Jan-18	1344.60	2296.20	70.77%
Trent Ltd.	19-Dec-18	348.40	794.00	127.90%
Ultratech Cement Ltd.	19-Dec-18	4084.60	4904.95	20.08%
Voltas Ltd.	27-Mar-18	613.90	741.00	20.70%
Whirlpool Of India Ltd.	7-Dec-16	872.25	2555.00	192.92%
Zee Entertainment	22-Nov-19	345.00	362.00	4.93%

## Technical Levels for Nifty 50 Companies

Company	Closing 27-07-2020	Buy/Sell Trigger	Resistance 1	Resistance 2	Support 1	Support 2
ADANIPTS	309.05	305.92	313.83	318.62	301.13	293.22
ASIANPAINT	1778.15	1761.12	1805.03	1831.92	1734.23	1690.32
AXISBANK	431.55	436.48	443.07	454.58	424.97	418.38
BAJAJ-AUTO	3020.5	2996.52	3058.98	3097.47	2958.03	2895.57
BAJAJFINSV	6173.2	6208.02	6280.23	6387.27	6100.98	6028.77
BAJFINANCE	3171.15	3201.12	3250.03	3328.92	3122.23	3073.32
BHARTIARTL	559.5	555.8	567.45	575.4	547.85	536.2
BPCL	457.7	456.1	468.2	478.7	445.6	433.5
BRITANNIA	3777.35	3795.45	3828.5	3879.65	3744.3	3711.25
CIPLA	652.9	659.08	667.77	682.63	644.22	635.53
COALINDIA	129.95	130.37	131.38	132.82	128.93	127.92
DRREDDY	4015.7	4021.43	4079.92	4144.13	3957.22	3898.73
EICHERMOT	20537.7	20595.9	20791.8	21045.9	20341.8	20145.9
GAIL	97.5	98.5	99.75	102	96.25	95
GRASIM	570.8	574.75	581.05	591.3	564.5	558.2
HCLTECH	701.1	694	711.5	721.9	683.6	666.1
HDFC	1850.75	1845.57	1867.13	1883.52	1829.18	1807.62
HDFCBANK	1079.5	1085.95	1096.55	1113.6	1068.9	1058.3
HEROMOTOCO	2743.6	2730.33	2772.27	2800.93	2701.67	2659.73
HINDALCO	158.2	157.53	160.47	162.73	155.27	152.33
HINDUNILVR	2221.5	2214.07	2243.38	2265.27	2192.18	2162.87
ICICIBANK	358.5	366.97	377.33	396.17	348.13	337.77
INDUSINDBK	506.65	511.83	518.67	530.68	499.82	492.98
INFRADEL	194.25	194.17	197.33	200.42	191.08	187.92
INFY	948.45	939.97	961.28	974.12	927.13	905.82
IOC	93.75	93.6	95.8	97.85	91.55	89.35
ITC	196.4	197.35	199.55	202.7	194.2	192
JSWSTEEL	206.95	205.18	210.27	213.58	201.87	196.78
KOTAKBANK	1322.6	1337.42	1364.68	1406.77	1295.33	1268.07
LT	903.8	905.03	913.77	923.73	895.07	886.33
M&M	594.4	594.13	600.27	606.13	588.27	582.13
MARUTI	6043.3	6011.4	6094.75	6146.2	5959.95	5876.6
NESTLEIND	17350.25	17325.7	17439.5	17528.75	17236.45	17122.65
NTPC	87.65	88.17	89.08	90.52	86.73	85.82
ONGC	80.8	80.97	81.83	82.87	79.93	79.07
POWERGRID	180.9	180.4	182.05	183.2	179.25	177.6
RELIANCE	2156.2	2160.97	2194.03	2231.87	2123.13	2090.07
SBIN	187.15	188.95	191.4	195.65	184.7	182.25
SHREECEM	21113.85	21239.93	21463.92	21813.98	20889.87	20665.88
SUNPHARMA	475.5	477.37	485.73	495.97	467.13	458.77
TATAMOTORS	101.7	102.5	103.7	105.7	100.5	99.3
TATASTEEL	352.85	350.33	356.42	359.98	346.77	340.68
TCS	2206.8	2195.1	2226.7	2246.6	2175.2	2143.6
TECHM	664.55	659.7	676.6	688.65	647.65	630.75
TITAN	1042.1	1051.32	1063.28	1084.47	1030.13	1018.17
ULTRACEMCO	3860.1	3847.37	3913.73	3967.37	3793.73	3727.37
UPL	445.8	447.68	455.12	464.43	438.37	430.93
VEDL	109.85	110.8	112.3	114.75	108.35	106.85
WIPRO	268.85	269.73	272.32	275.78	266.27	263.68
ZEEL	145.4	148.37	152.13	158.87	141.63	137.87

**NIFTY 50 STOCKS BELOW 200SMA**

SCRIP NAME	SMA 200	CLOSING (27-07-2020)
ZEEL	219.04	145.4
LT	1126.48	903.8
ITC	210.33	196.4
TATASTEEL	366.33	352.85
SBIN	252.83	187.15
GRASIM	659.93	570.8
TATAMOTORS	129.81	101.7
HDFC	2035.17	1850.75
HINDALCO	164.86	158.2
ICICIBANK	433.86	358.5
HDFCBANK	1116.67	1079.5
IOC	106.38	93.75
AXISBANK	581.89	431.55
ONGC	101.25	80.8
TITAN	1092.44	1042.1
VEDL	120.04	109.85
UPL	485.24	445.8
GAIL	108.09	97.5
INDUSINDBK	936.96	506.65
BAJFINANCE	3464.36	3171.15
ADANI PORTS	342.87	309.05
ULTRACEMCO	3950.5	3860.1
KOTAKBANK	1474.05	1322.6
TECHM	670.21	664.55
JSWSTEEL	220.33	206.95
NTPC	104.29	87.65
MARUTI	6284.29	6043.3
BAJAJFINSV	7370.65	6173.2
COALINDIA	167.44	129.95
INFRA TEL	218.33	194.25
--	--	--
--	--	--
--	--	--
--	--	--
--	--	--

**Weekly Expiry Most Active Nifty Call Option**

Symbol	Expiry Date	Strike Price	Highest Open Interest (OI)
NIFTY	30-Jul-2020	11500	4,514,475
NIFTY	30-Jul-2020	11200	4,096,725
NIFTY	30-Jul-2020	11300	2,909,100

**Weekly Expiry Most Active Nifty Put Option**

Symbol	Expiry Date	Strike Price	Highest Open Interest (OI)
NIFTY	30-Jul-2020	11000	4,211,325
NIFTY	30-Jul-2020	10000	3,615,900
NIFTY	30-Jul-2020	10500	3,022,275

**Securities in Ban For Trade Date 28-07-2020**

ADANI ENT, BHEL, CANBK, GMRINFRA, IBULHSGFIN, IDEA, INDUSINDBK, RBLBANK, SAIL.

**Bulk Deals (BSE)**

Deal Date	Scrip Name	Client Name	Deal Type	Quantity	Price
27-Jul-20	BESTAGRO	RESONANCE OPPORTUNITIES FUND	B	112000	610.35
27-Jul-20	RAYMOND	GAGANDEEP CONSULTANCY PRIVATE LIMITED	B	450000	249.45

**Bulk Deals (NSE)**

N/A

 Note- Executed on 27<sup>th</sup> Jul 2020. Bulk Deal Buy/Sell done by fund house is considered.

Research Analyst Registration No.

INH000002764

Contact

SMS: 'Arihant' to 56677

Website

[www.arihantcapital.com](http://www.arihantcapital.com)

mail Id

[arihant.research@arihantcapital.com](mailto:arihant.research@arihantcapital.com)

**Arihant is Forbes Asia's '200 Best under a \$Billion' Company  
 'Best Emerging Commodities Broker' awarded by UTV Bloomberg**

**Disclaimer:** This document has been prepared by Arihant Capital Markets Limited (hereinafter called as Arihant) and its subsidiaries and associated companies. This document does not constitute an offer or solicitation for the purchase and sale of any financial instrument by Arihant. Receipt and review of this document constitutes your agreement not to circulate, redistribute, retransmit or disclose to others the contents, opinions, conclusion, or information contained herein. This document has been prepared and issued on the basis of publicly available information, internally developed data and other sources believed to be reliable. Whilst meticulous care has been taken to ensure that the facts stated are accurate and opinions given are fair and reasonable, neither the analyst nor any employee of our company is in any way is responsible for its contents and nor is its accuracy or completeness guaranteed. This document is prepared for assistance only and is not intended to be and must not alone be taken as the basis for an investment decision. All recipients of this material should before dealing and or transacting in any of the products referred to in this material make their own investigation, seek appropriate professional advice. The investments discussed in this material may not be suitable for all investors. The recipient alone shall be fully responsible/are liable for any decision taken on the basis of this material. Arihant Capital Markets Ltd (including its affiliates) or its officers, directors, personnel and employees, including persons involved in the preparation or issuance of this material may; (a) from time to time, have positions in, and buy or sell or (b) be engaged in any other transaction and earn brokerage or other compensation in the financial instruments/products discussed herein or act as advisor or lender/borrower in respect of such securities/financial instruments/products or have other potential conflict of interest with respect to any recommendation and related information and opinions. The said persons may have acted upon and/or in a manner contradictory with the information contained here and may have a position or be otherwise interested in the investment referred to in this document before its publication. The user of this report assumes the entire risk of any use made of this data/report. Arihant especially states that it has no financial liability, whatsoever, to the users of this report.

## Arihant Capital Markets Ltd

#1011 Solitaire Corporate Park Building No.10 1<sup>st</sup> Floor  
 Andheri Ghatkopar Link Road Chakala Andheri (E) Mumbai-400093  
 T. 022-42254800. Fax: 022-42254880  
[www.arihantcapital.com](http://www.arihantcapital.com)