

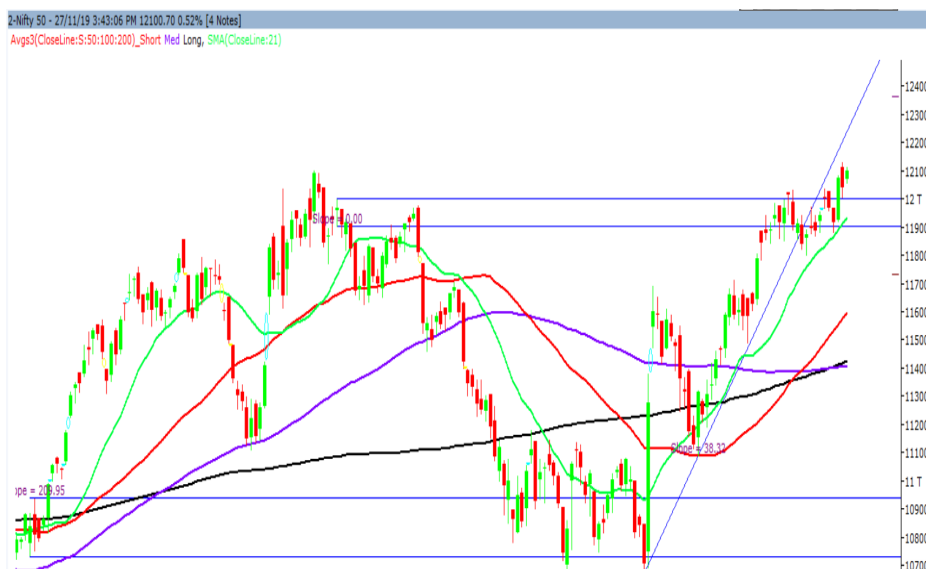
Thursday, 28th November, 2019

Indian Indices	Last Price	(%) Chg
BSE	41020.61	0.49
NSE	12100.70	0.52
World Indices		
Dow Jones	28164.00	0.15
Nasdaq	8705.17	0.66
Nikkei	23453.96	0.07
Hang Seng	26954.08	0.00
FTSE	7429.78	0.36
Commodity	Last Price	(%) Chg
GOLD(\$/ounce)	1455.70	0.16
Silver (\$/Ounce)	16.94	0.17
Crude (\$/BBL)	64.04	-0.20
Aluminium spot (\$/mt)	1766.50	-0.32
Copper SPOT (\$/mt)	5922.75	-0.37
Lead Spot (\$/MT)	1950.00	0.36
Natural gas \$/MMBtu	2.49	-1.42
Currency	Last Price	(%) Chg
USD-INR	71.54	-0.23
EUR-INR	78.91	-0.24
Bond	Last Price	(%) Chg
India 10 Yr Bond yield	6.46	-0.15

52 Wk High (A group)			52 Wk Low (A group)		
Company	Close Price	52 Wk High	Company	Close Price	52 Wk Low
BAJAJFIN	9253	9260	ALBK	23.1	23.0
DIVISLAB	1811	1819	CHENPET	128	126
DRREDD	2955	2990	JAINIRIGA	10.5	10.4
GODFREY	1335	1354	MPHASIS	832	828
PIIND	1474	1482	--	--	--

Source: BSE

Market Technical Outlook



Nifty opened higher trades in a narrow range with positive bias to close in green. On the daily chart we are observing an inside day formation which suggests that markets are circumspect at current level. We maintain our stance that there is no sign of weakness at present and stock specific activity is likely to continue.

In coming trading session if Nifty opens lower in the range of 12086 – 12063 then, go long, with a stop loss of 12054 for a target of 12113 – 12122 – 12136 levels.

News for stocks

BSE	BSE approved sale of 41.8 lakh shares (4 percent stake) in CDSL via OFS worth up to Rs 85.69 crore. Floor Price set at Rs 205 per share.
CIPLA	Cipla's arm Cipla (EU) has increased its stake in its Sri Lanka arm from 60% to 100%.

Foreign Institutional Investments (FII's) Activities

Name of Segment	Net Buyer/seller	Rs In Cr
Index Futures	Net Sell	-370.81
Stock Futures	Net Buy	529.21
Net Future Position	Net Buy	158.40
Index Options	Net Buy	74.66
Stock Options	Net Buy	69.24
Net Options Position	Net Buy	143.90
FII In cash Segment	Net Buy	42.93
DII In cash Segment	Net Buy	439.51
Net Cash Position	Net Buy	482.44

Technical Levels for Nifty 50 Companies

Company	Closing 27-11-2019	Buy/Sell Trigger	Resistance 1	Resistance 2	Support 1	Support 2
ADANIPTS	372.95	371.52	375.78	378.62	368.68	364.42
ASIANPAINT	1715.35	1716.98	1729.37	1743.38	1702.97	1690.58
AXISBANK	752.90	755.02	761.63	770.37	746.28	739.67
BAJAJ-AUTO	3212.05	3203.10	3226.20	3240.35	3188.95	3165.85
BAJAJFINSV	9228.45	9203.35	9285.40	9342.35	9146.40	9064.35
BAJFINANCE	4118.35	4112.75	4130.50	4142.65	4100.60	4082.85
BHARTIARTL	433.35	432.25	438.10	442.85	427.50	421.65
BPCL	505.90	501.05	514.10	522.30	492.85	479.80
BRITANNIA	3091.10	3083.70	3107.40	3123.70	3067.40	3043.70
CIPLA	468.00	469.18	473.82	479.63	463.37	458.73
COALINDIA	201.00	199.63	203.07	205.13	197.57	194.13
DRREDDY	2972.00	2968.75	2995.20	3018.40	2945.55	2919.10
EICHERMOT	23021.65	23098.02	23323.63	23625.62	22796.04	22570.42
GAIL	124.45	124.80	126.15	127.85	123.10	121.75
GRASIM	788.10	791.97	798.93	809.77	781.13	774.17
HCLTECH	1128.25	1123.88	1138.77	1149.28	1113.37	1098.48
HDFC	2336.30	2332.23	2356.07	2375.83	2312.47	2288.63
HDFCBANK	1278.40	1278.45	1285.70	1293.00	1271.15	1263.90
HEROMOTOCO	2523.25	2516.27	2540.98	2558.72	2498.53	2473.82
HINDALCO	203.00	201.97	204.53	206.07	200.43	197.87
HINDUNILVR	2093.25	2083.00	2110.15	2127.05	2066.10	2038.95
ICICIBANK	505.50	508.55	512.80	520.10	501.25	497.00
INDUSINDBK	1526.35	1523.92	1539.83	1553.32	1510.43	1494.52
INFRADEL	225.30	229.65	236.05	246.80	218.90	212.50
INFY	695.75	694.50	698.90	702.05	691.35	686.95
IOC	131.10	130.60	132.15	133.20	129.55	128.00
ITC	246.95	247.87	249.13	251.32	245.68	244.42
JSWSTEEL	252.95	254.25	256.60	260.25	250.60	248.25
KOTAKBANK	1617.90	1614.53	1627.37	1636.83	1605.07	1592.23
LT	1335.50	1339.88	1365.62	1395.73	1309.77	1284.03
M&M	539.95	543.15	551.30	562.65	531.80	523.65
MARUTI	7294.40	7253.67	7340.73	7387.07	7207.33	7120.27
NESTLEIND	14562.70	14496.52	14766.18	14969.67	14293.03	14023.37
NTPC	115.75	116.17	116.88	118.02	115.03	114.32
ONGC	132.65	131.75	133.95	135.25	130.45	128.25
POWERGRID	195.10	195.07	196.03	196.97	194.13	193.17
RELIANCE	1569.85	1567.15	1578.20	1586.55	1558.80	1547.75
SBIN	343.55	341.05	348.05	352.55	336.55	329.55
SUNPHARMA	458.75	455.77	463.98	469.22	450.53	442.32
TATAMOTORS	165.90	166.73	168.47	171.03	164.17	162.43
TATASTEEL	421.35	422.52	425.83	430.32	418.03	414.72
TCS	2054.30	2057.52	2068.48	2082.67	2043.33	2032.37
TECHM	767.55	764.82	772.28	777.02	760.08	752.62
TITAN	1167.15	1170.22	1179.43	1191.72	1157.93	1148.72
ULTRACEMCO	4234.65	4202.77	4281.88	4329.12	4155.53	4076.42
UPL	551.85	550.32	556.43	561.02	545.73	539.62
VEDL	146.95	146.80	148.95	150.95	144.80	142.65
WIPRO	240.05	239.67	241.28	242.52	238.43	236.82
YESBANK	68.25	67.63	69.62	70.98	66.27	64.28
ZEEL	319.50	320.27	329.13	338.77	310.63	301.77

(Source – IRIS)

Guru Call: From the expert's desk

Company	Reco Date	Reco Price (Buy on dips)	High till date	Return%
Aditya Birla Capital	22-Nov-19	95.75	101	5.48%
Asian Paints Ltd.	30-Mar-17	1068.1	1834	71.71%
Avenue Supermarts Ltd.	31-Jul-17	898.55	2010	123.69%
Axis Bank Ltd.	10-Apr-18	519.3	827	59.25%
Bajaj Finance Ltd.	11-Oct-18	2271	4280	88.46%
Bajaj Finserv Ltd	1-Nov-16	3416.8	9140	167.50%
Bajaj Holdings And Investment Ltd	19-May-16	1499.1	3903	160.36%
Bandhan Bank Ltd.	19-Dec-18	556.4	650	16.82%
Bharat Petroleum Corporation Ltd.	23-Oct-19	531.5	549	3.29%
Century Textile and Industries Ltd	25-Nov-16	326	468	43.56%
Cipla Ltd	20-Mar-17	597.3	678.5	13.59%
Colgate Palmolive	16-Sep-19	1314	1642	24.96%
Container Corporation	22-Nov-19	577	575	-0.35%
Dabur India	22-Oct-19	466	487	4.51%
DLF Ltd	10-Apr-19	194.3	219	12.71%
Emami Limited	26-Jun-19	290.35	355	22.27%
Godrej Industries Ltd.	12-Feb-18	550.7	657.6	19.41%
Godrej Properties Ltd.	19-Dec-18	685.3	1119.6	63.37%
Grasim Industries Ltd.	31-May-17	1132.5	1331	17.53%
Havells India Ltd.	8-Dec-17	525.75	806.85	53.47%
Housing Development Finance Corp Ltd	19-Dec-17	1720	2357.9	37.08%
HDFC Asset Management Company Ltd.	19-Dec-18	1572.9	3844	144.39%
HDFC Bank Limited	10-Nov-16	639	1287	101.41%
HDFC Life Insurance Co Ltd	19-Jan-18	485.05	646	33.18%
Hindustan Unilever Ltd.	13-Nov-17	1290.7	2190	69.68%
ICICI Bank Ltd.	6-Apr-18	278.65	509	82.67%
ICICI Prudential Life Insurance Company Ltd.	28-Jun-18	375.8	537	42.90%
ICICI Lombard General Insurance	19-Sep-19	1154.9	1399	21.14%
Infosys Ltd.	17-Aug-17	487.6	847	73.71%
Kotak Mahindra Bank Ltd	10-Nov-16	822.1	1683	104.72%
Mahindra & Mahindra Ltd.	5-Jun-17	709.25	993	40.01%
Manappuram Finance Ltd.	24-Apr-18	119.2	173	45.13%
Mahanagar Gas	15-Nov-19	1029	1058	2.82%
Marico Ltd.	4-Apr-18	325	404	24.31%
Nestle India Ltd.	27-Sep-18	9729.4	15146	55.67%
Oberoi Realty Ltd.	23-Nov-17	508.6	641.7	26.17%
Phoenix Mills Limited	7-Jul-19	655.15	767	17.07%
Pidilite Industries Limited	4-Oct-16	681.6	1493	119.04%
Prestige Estates Projects Limited	6-Jun-19	286.7	326	13.71%
Reliance Nippon	25-Nov-18	377	379.5	0.06%
Rites Ltd.	19-Dec-18	226.96	324	42.76%
RBL Bank	22-Nov-19	334	363	8.68%
State Bank Of India	28-Aug-18	308	373.8	21.36%
Shipping Corporation	22-Nov-19	64	63	-1.56%
Tata Global Beverages Ltd.	29-Jun-17	149.15	328.8	120.45%
Tata Consultancy Services Ltd.	8-Jan-18	1344.6	2296	70.76%
Trent Ltd.	19-Dec-18	348.4	567.9	63.00%
Ultratech Cement Ltd.	19-Dec-18	4084.6	4904	20.06%
Voltas Ltd.	27-Mar-18	613.9	725	18.10%
Whirlpool Of India Ltd.	7-Dec-16	872.25	2339	168.16%
Zee Entertainment	22-Nov-19	345	362	4.93%

NIFTY 50 STOCKS BELOW 200SMA

SCRIP NAME	SMA 200	CLOSING (27-11-2019)
INFY	747.82	695.75
WIPRO	267.08	240.05
ZEEL	357.38	319.50
LT	1399.33	1335.50
ITC	271.86	246.95
TATASTEEL	448.40	421.35
GRASIM	803.21	788.10
CIPLA	514.24	468.00
M&M	611.00	539.95
HEROMOTOCO	2628.56	2523.25
IOC	144.54	131.10
ONGC	147.80	132.65
VEDL	160.01	146.95
UPL	599.43	551.85
GAIL	150.39	124.45
ADANI PORTS	381.82	372.95
POWERGRID	196.18	195.10
TCS	2120.19	2054.30
JSWSTEEL	258.65	252.95
NTPC	125.51	115.75
YESBANK	131.76	68.25
COALINDIA	223.00	201.00
INFRA TEL	270.06	225.30

Securities in Ban For Trade Date 28-11-2019

YESBANK.

Weekly Expiry Most Active Nifty Call Option

Symbol	Expiry Date	Strike Price	Highest Open Interest (OI)
NIFTY	28-Nov-19	12100	2990175
NIFTY	28-Nov-19	12200	2542425
NIFTY	28-Nov-19	12000	2158500

Weekly Expiry Most Active Nifty Put Option

Symbol	Expiry Date	Strike Price	Highest Open Interest (OI)
NIFTY	28-Nov-19	12000	4548300
NIFTY	28-Nov-19	11900	2888025
NIFTY	28-Nov-19	12100	2664450

Bulk Deals (BSE)

Deal Date	Scrip Name	Client Name	Deal Type	Quantity	Price
27-Nov-19	IIFLSEC	ABAKKUS GROWTH FUND -1	B	6000000	24.00
27-Nov-19	IIFLSEC	ABAKKUS EMERGING OPPORTUNITIES FUND - 1	B	2712220	24.00
27-Nov-19	IIFLSEC	WF ASIAN RECONNAISSANCE FUND LTD	S	9515355	24.00
27-Nov-19	LEMONTREE	WF ASIAN RECONNAISSANCE FUND LIMITED	B	10000000	60.00
27-Nov-19	LEMONTREE	RJ CORP LIMITED	S	11000000	60.01

Bulk Deals (NSE)

Deal Date	Scrip Name	Client Name	Deal Type	Quantity	Price
27-Nov-19	Reliance Infrastructu Ltd	AXIS TRUSTEE SERVICES LIMITED	SELL	1675662	27.30
27-Nov-19	Reliance Infrastructu Ltd	KBC EQUITY FUND	SELL	2240025	27.86

Note- Executed on 27th Nov 2019. Bulk Deal Buy/Sell done by fund house is considered.

Research Analyst Registration No.

INH000002764

Contact

SMS: 'Arihant' to 56677

Website
www.arihantcapital.com
mail Id
arihant.research@arihantcapital.com

Arihant is Forbes Asia's '200 Best under a \$Billion' Company
'Best Emerging Commodities Broker' awarded by UTV Bloomberg

Disclaimer: This document has been prepared by Arihant Capital Markets Limited (hereinafter called as Arihant) and its subsidiaries and associated companies. This document does not constitute an offer or solicitation for the purchase and sale of any financial instrument by Arihant. Receipt and review of this document constitutes your agreement not to circulate, redistribute, retransmit or disclose to others the contents, opinions, conclusion, or information contained herein. This document has been prepared and issued on the basis of publicly available information, internally developed data and other sources believed to be reliable. Whilst meticulous care has been taken to ensure that the facts stated are accurate and opinions given are fair and reasonable, neither the analyst nor any employee of our company is in any way is responsible for its contents and nor is its accuracy or completeness guaranteed. This document is prepared for assistance only and is not intended to be and must not alone be taken as the basis for an investment decision. All recipients of this material should before dealing and or transacting in any of the products referred to in this material make their own investigation, seek appropriate professional advice. The investments discussed in this material may not be suitable for all investors. The recipient alone shall be fully responsible/are liable for any decision taken on the basis of this material. Arihant Capital Markets Ltd (including its affiliates) or its officers, directors, personnel and employees, including persons involved in the preparation or issuance of this material may; (a) from time to time, have positions in, and buy or sell or (b) be engaged in any other transaction and earn brokerage or other compensation in the financial instruments/products discussed herein or act as advisor or lender/borrower in respect of such securities/financial instruments/products or have other potential conflict of interest with respect to any recommendation and related information and opinions. The said persons may have acted upon and/or in a manner contradictory with the information contained here and may have a position or be otherwise interested in the investment referred to in this document before its publication. The user of this report assumes the entire risk of any use made of this data/report. Arihant especially states that it has no financial liability, whatsoever, to the users of this report.

Arihant Capital Markets Ltd

#1011 Solitaire Corporate Park Building No.10 1st Floor
 Andheri Ghatkopar Link Road Chakala Andheri (E) Mumbai-400093
 T. 022-42254800. Fax: 022-42254880
www.arihantcapital.com