

To join our research group on TELEGRAM, please click on the links - <https://bit.ly/37T17JR> and <https://bit.ly/2svtU7k>

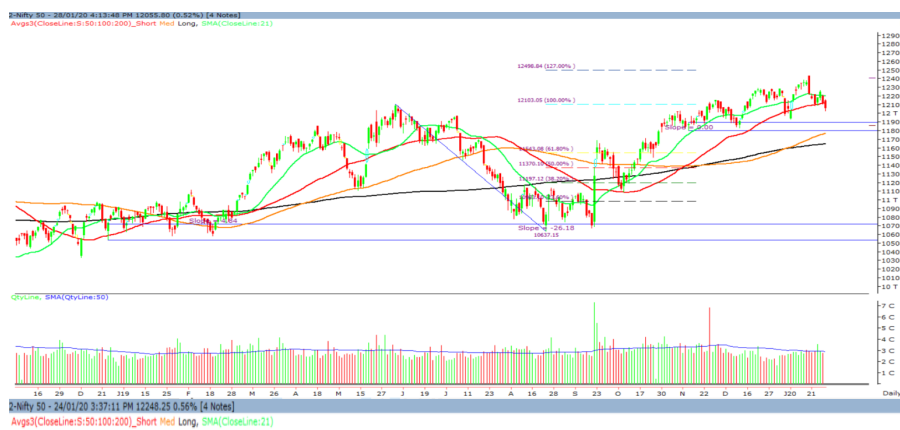
Wednesday, 29th January, 2020

Indian Indices	Last Price	(%) Chg
BSE	40966.86	-0.46
NSE	12060.25	-0.48
World Indices		
Dow Jones	28722.85	0.66
Nasdaq	9269.68	1.43
Nikkei	23319.40	0.43
Hang Seng	27220.49	-2.62
FTSE	7480.69	0.93
Commodity	Last Price	(%) Chg
GOLD(\$/ounce)	1562.50	-0.47
Silver (\$/Ounce)	17.38	-0.48
Crude (\$/BBL)	60.16	1.09
Aluminium spot (\$/mt)	1755.75	0.19
Copper SPOT (\$/mt)	5728.25	0.47
Lead Spot (\$/MT)	1893.00	0.24
Natural gas \$/MMBtu	1.92	0.42
Currency	Last Price	(%) Chg
USD-INR	71.36	-0.13
EUR-INR	78.65	-0.21
Bond	Last Price	(%) Chg
India 10 Yr Bond yield	6.57	0.35

52 Wk High (A group)			52 Wk Low (A group)		
Company	Close Price	52 Wk High	Company	Close Price	52 Wk Low
APLL	632	639	ITC	230	230
ATUL	4895	5030	--	--	--
COROMAN	612	622	--	--	--
DIVISLA	1945	1951	--	--	--
LALPATH	1772	1795	--	--	--

Source: BSE

Market Technical Outlook



Nifty opened higher but was unable to sustain the opening gains and selling intensified as the day progressed which led the indices to close in red. On the daily chart we are observing that prices have convincingly closed below the 50-day SMA (12117). This clearly reflects that the uptrend has come under pressure. On the downside Nifty may test 11977 – 11905 – 11861 levels. **Hence, one needs to adopt cautious approach at current level.**

In coming trading session if Nifty opens in the range of 12087 – 12140 then go short SL 12210 for a target of 12022 – 12001 – 11969 levels.

News for stocks

MARUTI	Maruti Suzuki reported 5.07% YoY rise in profit at Rs 1,565 crore for the December quarter compared with Rs 1,489 crore in the same quarter last year
TCS	Tata Sons has started the process of arranging funds for paying off statutory dues of Rs 13,823 crore owed by Tata Teleservices. It will most likely bank on the group flagship TCS for sourcing funds in case it has to pay the dues immediately

Foreign Institutional Investments (FII's) Activities

Name of Segment	Net Buyer/seller	Rs In Cr
Index Futures	Net Sell	-540.79
Stock Futures	Net Sell	-1011.41
Net Future Position	Net Sell	-1552.20
Index Options	Net Sell	-549.11
Stock Options	Net Buy	53.97
Net Options Position	Net Sell	-495.14
FII In cash Segment	Net Sell	-1357.56
DII In cash Segment	Net Buy	711.70
Net Cash Position	Net Sell	-645.86

Technical Levels for Nifty 50 Companies

Company	Closing 28-01-2020	Buy/Sell Trigger	Resistance 1	Resistance 2	Support 1	Support 2
ADANI PORTS	372.95	374.88	379.57	386.18	368.27	363.58
ASIAN PAINT	1779.1	1782.03	1791.07	1803.03	1770.07	1761.03
AXIS BANK	737.15	739.55	744.1	751.05	732.6	728.05
BAJAJ-AUTO	3060.9	3072.83	3097.67	3134.43	3036.07	3011.23
BAJAJ FINSV	9631.3	9623.77	9717.53	9803.77	9537.53	9443.77
BAJ FINANCE	4213	4204.05	4257.95	4302.9	4159.1	4105.2
BHARTIARTL	491.25	497.25	508.4	525.55	480.1	468.95
BPCL	480.95	476.93	486.27	491.58	471.62	462.28
BRITANNIA	3181.25	3175.88	3215.27	3249.28	3141.87	3102.48
CIPLA	464.7	463.88	468.82	472.93	459.77	454.83
COALINDIA	189.15	190.6	192.8	196.45	186.95	184.75
DRREDDY	3189.15	3198.95	3240.15	3291.15	3147.95	3106.75
EICHER MOT	21086.65	21062.88	21250.77	21414.88	20898.77	20710.88
GAIL	126.15	126.27	127.33	128.52	125.08	124.02
GRASIM	808.9	810	822.75	836.6	796.15	783.4
HCLTECH	601.45	600.47	608.33	615.22	593.58	585.72
HDFC	2431.6	2437.77	2465.53	2499.47	2403.83	2376.07
HDFC BANK	1223.2	1221.42	1229.58	1235.97	1215.03	1206.87
HEROMOTOCO	2468.85	2472.6	2505.2	2541.55	2436.25	2403.65
HINDALCO	196	196.53	198.87	201.73	193.67	191.33
HINDUNILVR	2060.6	2056.1	2069.5	2078.4	2047.2	2033.8
ICICIBANK	528.2	531.08	537.72	547.23	521.57	514.93
INDUSINDBK	1254.75	1259.97	1279.68	1304.62	1235.03	1215.32
INFRA TEL	237.6	238.07	243.48	249.37	232.18	226.77
INFY	778	777.27	782.53	787.07	772.73	767.47
IOC	117.9	117.95	119.55	121.2	116.3	114.7
ITC	230.75	232.38	234.27	237.78	228.87	226.98
JSW STEEL	255.25	256.2	260.8	266.35	250.65	246.05
KOTAK BANK	1626.05	1624.77	1639.28	1652.52	1611.53	1597.02
LT	1346.65	1346.55	1355.1	1363.55	1338.1	1329.55
M&M	572.5	576.92	585.33	598.17	564.08	555.67
MARUTI	6997.05	7060	7157	7316.95	6900.05	6803.05
NESTLE IND	15416.65	15497.82	15628.83	15841.02	15285.63	15154.62
NTPC	112.05	112.23	113.57	115.08	110.72	109.38
ONGC	116.6	116.63	117.67	118.73	115.57	114.53
POWERGRID	190.45	190.85	192.6	194.75	188.7	186.95
RELIANCE	1471.75	1481.78	1499.97	1528.18	1453.57	1435.38
SBIN	315.1	315.38	319.72	324.33	310.77	306.43
SUN PHARMA	452.9	454.48	460.92	468.93	446.47	440.03
TATAMOTORS	176.1	178.43	181.97	187.83	172.57	169.03
TATA STEEL	446.25	450.08	458.17	470.08	438.17	430.08
TCS	2183.75	2174.52	2197.03	2210.32	2161.23	2138.72
TECHM	794.25	791.53	798.47	802.68	787.32	780.38
TITAN	1195	1202.27	1216.23	1237.47	1181.03	1167.07
ULTRACEMCO	4609.05	4636.45	4688.4	4767.75	4557.1	4505.15
UPL	536.95	539.38	545.57	554.18	530.77	524.58
VEDL	142.2	143.83	146.12	150.03	139.92	137.63
WIPRO	244.05	243.98	246.17	248.28	241.87	239.68
YES BANK	41.65	42.07	42.88	44.12	40.83	40.02
ZEEL	272.5	275.3	278.85	285.2	268.95	265.4

(Source – IRIS)

Guru Call: From the expert's desk

ort

Company	Reco Date	Reco Price (Buy on dips)	High till date	Return%
Aditya Birla Capital	22-Nov-19	95.75	115.35	20.47%
Asian Paints Ltd.	30-Mar-17	1068.1	1862.25	74.35%
Avenue Supermarts Ltd.	31-Jul-17	898.55	2010	123.69%
Axis Bank Ltd.	10-Apr-18	519.3	827.75	59.40%
Bajaj Finance Ltd.	11-Oct-18	2271	4295.75	89.16%
Bajaj Finserv Ltd	1-Nov-16	3416.8	9764.35	185.77%
Bajaj Holdings And Investment Ltd	19-May-16	1499.1	3903.95	160.42%
Bandhan Bank Ltd.	19-Dec-18	556.4	650	16.82%
Bharat Petroleum Corporation Ltd.	23-Oct-19	531.5	549	3.29%
Century Textile and Industries Ltd	25-Nov-16	326	634	94.48%
Cipla Ltd	20-Mar-17	597.3	678.45	13.59%
Colgate Palmolive	16-Sep-19	1314	1642.6	25.01%
Container Corporation	22-Nov-19	577	603	4.51%
Dabur India	22-Oct-19	466	501	7.51%
DLF Ltd	10-Apr-19	194.3	265.9	36.85%
Emami Limited	26-Jun-19	290.35	357.7	23.20%
Godrej Industries Ltd.	12-Feb-18	550.7	657.6	19.41%
Godrej Properties Ltd.	19-Dec-18	685.3	1119.6	63.37%
Grasim Industries Ltd.	31-May-17	1132.5	1331	17.53%
Havells India Ltd.	8-Dec-17	525.75	806.85	53.47%
Housing Development Finance Corp Ltd	19-Dec-17	1720	2499.9	45.34%
HDFC Asset Management Company Ltd.	19-Dec-18	1572.9	3844	144.39%
HDFC Bank Limited	10-Nov-16	639	1305.5	104.30%
HDFC Life Insurance Co Ltd	19-Jan-18	485.05	646.4	33.26%
Hindustan Unilever Ltd.	13-Nov-17	1290.7	2190	69.68%
ICICI Bank Ltd.	6-Apr-18	278.65	552.2	98.17%
ICICI Prudential Life Insurance Company Ltd.	28-Jun-18	375.8	537.3	42.97%
ICICI Lombard General Insurance	19-Sep-19	1154.9	1440.4	24.72%
Infosys Ltd.	17-Aug-17	487.6	847	73.71%
Kansai Nerolac Paints	16-Dec-19	529.85	551	3.99%
Kotak Mahindra Bank Ltd	10-Nov-16	822.1	1734.8	111.02%
Mahindra & Mahindra Ltd.	5-Jun-17	709.25	993	40.01%
Manappuram Finance Ltd.	24-Apr-18	119.2	189	58.56%
Mahanagar Gas	15-Nov-19	1029	1198	16.42%
Marico Ltd.	4-Apr-18	325	404	24.31%
Nestle India Ltd.	27-Sep-18	9729.4	15850	62.91%
Oberoi Realty Ltd.	23-Nov-17	508.6	641.7	26.17%
Phoenix Mills Limited	7-Jul-19	655.15	900	37.37%
Pidilite Industries Limited	4-Oct-16	681.6	1493.5	119.12%
Prestige Estates Projects Limited	6-Jun-19	286.7	426	48.59%
Reliance Nippon	25-Nov-18	377	386.4	2.49%
Rites Ltd.	19-Dec-18	226.96	324.8	43.11%
RBL Bank	22-Nov-19	334	391.2	17.13%
State Bank Of India	28-Aug-18	308	373.8	21.36%
Shipping Corporation	22-Nov-19	64	65.95	3.05%
Tata Chemicals Limited	24-Dec-19	682.8	762	11.60%
Tata Global Beverages Ltd.	29-Jun-17	149.15	399.45	167.82%
Tata Consultancy Services Ltd.	8-Jan-18	1344.6	2296.2	70.77%
Trent Ltd.	19-Dec-18	348.4	611.95	75.65%
Ultratech Cement Ltd.	19-Dec-18	4084.6	4904.95	20.08%
Voltas Ltd.	27-Mar-18	613.9	730.95	19.07%
Whirlpool Of India Ltd.	7-Dec-16	872.25	2510	187.76%
Zee Entertainment	22-Nov-19	345	362	4.93%

NIFTY 50 STOCKS BELOW 200SMA

SCRIP NAME	SMA 200	CLOSING (28-01-2020)
WIPRO	261.94	244.05
ZEEL	324.97	272.5
LT	1397.1	1346.65
ITC	262.05	230.75
SBIN	316.8	315.1
CIPLA	499.89	464.7
M&M	583.59	572.5
HINDALCO	197.36	196
HEROMOTOCO	2562.92	2468.85
IOC	140.05	117.9
ONGC	142.78	116.6
VEDL	156.13	142.2
UPL	598.88	536.95
GAIL	140.16	126.15
INDUSINDBK	1453.85	1254.75
ADANI PORTS	387.55	372.95
POWERGRID	196.76	190.45
JSWSTEEL	255.26	255.25
NTPC	124.29	112.05
YESBANK	93.34	41.65
COALINDIA	216.92	189.15
INFRA TEL	257.04	237.6

Bulk Deals (BSE)

Deal Date	Scrip Name	Client Name	Deal Type	Quantity	Price
28-Jan-20	GATI	ALLCARGO LOGISTICS LIMITED	B	9100000	74.82
28-Jan-20	GATI	MAHENDRA INVESTMENT ADVISORS PRIVATE LIMITED	S	2590209	75.00
28-Jan-20	GATI	TCI FINANCE LIMITED	S	3179385	75.00
28-Jan-20	LAOPALA	HDFC MUTUAL FUND	B	700000	190.00
28-Jan-20	NH	DSP MUTUAL FUND	B	1183000	340.00
28-Jan-20	NH	SBI MUTUAL FUND	B	6,541,745	340.00
28-Jan-20	NH	CDC GROUP PLC	S	8,174,432	340.00

Bulk Deals (NSE)

N/A

 Note- Executed on 28th Jan 2020. Bulk Deal Buy/Sell done by fund house is considered.

Weekly Expiry Most Active Nifty Call Option

Symbol	Expiry Date	Strike Price	Highest Open Interest (OI)
NIFTY	30-Jan-19	12200	6148125
NIFTY	30-Jan-19	12300	4557225
NIFTY	30-Jan-19	12500	4057050

Weekly Expiry Most Active Nifty Put Option

Symbol	Expiry Date	Strike Price	Highest Open Interest (OI)
NIFTY	30-Jan-19	12000	4038900
NIFTY	30-Jan-19	11500	2963250
NIFTY	30-Jan-19	11800	2506200

Securities in Ban For Trade Date 29-01-2020

NIL

Research Analyst Registration No.	Contact	Website	mail Id
INH000002764	SMS: 'Arihant' to 56677	www.arihantcapital.com	arihant.research@arihantcapital.com

**Arihant is Forbes Asia's '200 Best under a \$Billion' Company
'Best Emerging Commodities Broker' awarded by UTV Bloomberg**

Disclaimer: This document has been prepared by Arihant Capital Markets Limited (hereinafter called as Arihant) and its subsidiaries and associated companies. This document does not constitute an offer or solicitation for the purchase and sale of any financial instrument by Arihant. Receipt and review of this document constitutes your agreement not to circulate, redistribute, retransmit or disclose to others the contents, opinions, conclusion, or information contained herein. This document has been prepared and issued on the basis of publicly available information, internally developed data and other sources believed to be reliable. Whilst meticulous care has been taken to ensure that the facts stated are accurate and opinions given are fair and reasonable, neither the analyst nor any employee of our company is in any way is responsible for its contents and nor is its accuracy or completeness guaranteed. This document is prepared for assistance only and is not intended to be and must not alone be taken as the basis for an investment decision. All recipients of this material should before dealing and or transacting in any of the products referred to in this material make their own investigation, seek appropriate professional advice. The investments discussed in this material may not be suitable for all investors. The recipient alone shall be fully responsible/are liable for any decision taken on the basis of this material. Arihant Capital Markets Ltd (including its affiliates) or its officers, directors, personnel and employees, including persons involved in the preparation or issuance of this material may; (a) from time to time, have positions in, and buy or sell or (b) be engaged in any other transaction and earn brokerage or other compensation in the financial instruments/products discussed herein or act as advisor or lender/borrower in respect of such securities/financial instruments/products or have other potential conflict of interest with respect to any recommendation and related information and opinions. The said persons may have acted upon and/or in a manner contradictory with the information contained here and may have a position or be otherwise interested in the investment referred to in this document before its publication. The user of this report assumes the entire risk of any use made of this data/report. Arihant especially states that it has no financial liability, whatsoever, to the users of this report.

Arihant Capital Markets Ltd

#1011 Solitaire Corporate Park Building No.10 1st Floor
 Andheri Ghatkopar Link Road Chakala Andheri (E) Mumbai-400093
 T. 022-42254800. Fax: 022-42254880
www.arihantcapital.com