

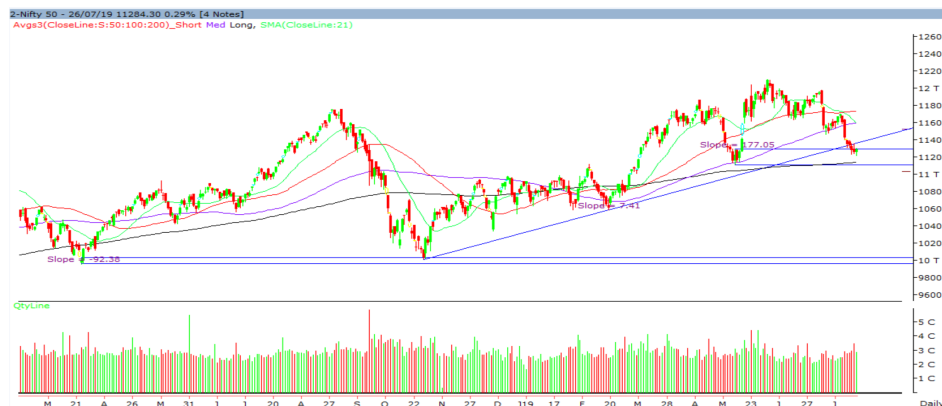
Monday, 29th July, 2019

Indian Indices	Last Price	(%) Chg
BSE	37882.79	0.14
NSE	11284.30	0.29
World Indices	Last Price	(%) Chg
Dow Jones	27192.45	0.19
Nasdaq	8330.21	1.11
Nikkei	21538.20	-0.55
Hang Seng	28072.33	-1.15
FTSE	7549.06	0.80
Commodity	Last Price	(%) Chg
GOLD(\$/ounce)	1422.20	0.20
Silver (\$/Ounce)	16.42	0.17
Crude (\$/BBL)	63.25	-0.33
Aluminium spot (\$/mt)	1806.25	0.08
Copper SPOT (\$/mt)	5967.00	0.04
Lead Spot (\$/MT)	2069.00	-0.16
Natural gas \$/MMBtu	2.16	0.33
Currency	Last Price	(%) Chg
USD-INR	68.91	-0.119
EUR-INR	76.74	-0.28
Bond	Last Price	(%) Chg
India 10 Yr Bond yield	6.52	0.21

52 Wk High (A group)			52 Wk Low (A group)		
Company	Close Price	52 Wk High	Company	Close Price	52 Wk Low
ASIANPA	1524	1530	APOLLOT	163	160
--	--	--	BALRISIN	720	701
--	--	--	ESCORTS	473	467
--	--	--	HINDZIN	225	216
--	--	--	MARUTI	5805	5685

Source: BSE

Market Technical Outlook



Nifty opened higher traded with choppiness but finally managed to close in green. On the daily chart we are observing that prices are very close to 200-day SMA(11135). Further, prices are trading within the demand zone (shown above in the graph by parallel line). Hence a pull back from current level cannot be ruled out.

Outlook: In coming trading session if Nifty opens lower in the range of 11261 to 11240 levels then one can initiate long with a stop loss of 11204 for a target of 11307 - 11344 levels.

News for stocks under our Fundamental coverage

MARUTI SUZUKI	Maruti Suzuki introduced CNG Variant in Ertiga and Tour M.
--	--

Foreign Institutional Investments (FII's) Activities

Name of Segment	Net Buyer/seller	Rs In Cr
Index Futures	Net Sell	-1049.20
Stock Futures	Net Buy	720.88
Net Future Position	Net Sell	-328.33
Index Options	Net Buy	1007.39
Stock Options	Net Buy	126.30
Net Options Position	Net Buy	1133.69
FII In cash Segment	Net Sell	-1503.26
DII In cash Segment	Net Buy	1917.52
Net Cash Position	Net Buy	414.26

Technical Levels for Nifty 50 Companies

Company	Closing 26-07-2019	Buy/Sell Trigger	Resistance 1	Resistance 2	Support 1	Support 2
ADANI PORTS	382	381	385	388	378	374
ASIAN PAINT	1526	1514	1543	1559	1498	1469
AXIS BANK	730	727	735	740	722	714
BAJAJ-AUTO	2619	2602	2697	2775	2523	2428
BAJAJ FINSV	7233	7054	7477	7721	6810	6388
BAJ FINANCE	3265	3179	3364	3463	3080	2895
BHARTIARTL	335	334	340	345	329	323
BPCL	344	341	348	352	337	331
CIPLA	2668	2657	2697	2725	2628	2588
COALINDIA	532	533	539	545	527	522
DRREDDY	211	210	214	217	206	202
EICHERMOT	2705	2680	2739	2773	2646	2588
GAIL	17187	16997	17667	18147	16517	15847
GRASIM	133	134	135	137	132	130
HCLTECH	875	874	881	887	868	861
HDFC	1001	1004	1010	1018	995	989
HDFC BANK	2166	2174	2189	2213	2151	2136
HEROMOTOCO	2277	2281	2290	2302	2269	2260
HINDALCO	2467	2440	2514	2562	2393	2319
HINDPETRO	198	197	200	202	195	193
HINDUNILVR	1731	1731	1742	1753	1719	1708
IBULHSGFIN	624	626	638	652	612	600
ICICIBANK	416	415	421	425	410	404
INDUSINDBK	1416	1408	1429	1443	1394	1373
INFRA TEL	270	268	274	277	265	260
INFY	787	788	794	801	781	775
IOC	142	143	145	148	140	138
ITC	270	269	272	274	268	265
JSWSTEEL	250	250	253	256	247	244
KOTAK BANK	1512	1502	1528	1543	1487	1461
LT	1392	1384	1405	1418	1371	1350
M&M	564	559	572	580	551	537
MARUTI	5806	5815	5946	6086	5675	5544
NTPC	129	129	130	131	128	127
ONGC	142	143	144	146	141	140
POWERGRID	212	212	214	216	210	208
RELIANCE	1214	1222	1234	1255	1202	1190
SBIN	343	343	346	349	340	337
SUNPHARMA	440	438	444	448	435	429
TATAMOTORS	147	145	152	157	140	133
TATASTEEL	446	443	451	456	438	431
TCS	2109	2111	2128	2146	2093	2076
TECHM	644	645	649	655	639	635
TITAN	1106	1101	1118	1130	1089	1071
ULTRACEMCO	4501	4484	4543	4586	4441	4382
UPL	602	600	612	622	590	579
VEDL	164	168	172	181	159	154
WIPRO	264	263	265	267	261	259
YES BANK	96	93	100	103	90	84
ZEEL	404	400	410	415	394	384

(Source – IRIS)

Guru Call: From the expert's desk

Company	Reco Date	Reco Price (Buy on dips)	High till date	Return%
Asian Paints Ltd.	30-Mar-17	1068.1	1529	43.15%
Avenue Supermarts Ltd.	31-Jul-17	898.55	1699	89.08%
Axis Bank Ltd.	10-Apr-18	519.3	827.75	59.40%
Bajaj Finance Ltd.	11-Oct-18	2271	3693.25	62.63%
Bajaj Finserv Ltd	1-Nov-16	3416.8	8557.85	150.46%
Bajaj Holdings And Investment Ltd	19-May-16	1499.1	3800	153.49%
Bandhan Bank Ltd.	19-Dec-18	556.4	636	14.31%
Century Textile and Industries Ltd	25-Nov-16	739.3	1471	98.97%
Cipla Ltd	20-Mar-17	597.3	678.5	13.59%
DLF Ltd	10-Apr-18	194.3	202.65	4.30%
Emami Limited	26-Jun-19	290.35	326	12.28%
Godrej Industries Ltd.	12-Feb-18	550.7	657.6	19.41%
Godrej Properties Ltd.	19-Dec-18	685.3	1014.8	48.08%
Grasim Industries Ltd.	31-May-17	1132.5	1331	17.53%
Havells India Ltd.	8-Dec-17	525.75	806.85	53.47%
Housing Development Finance Corp Ltd	19-Dec-17	1720	2235	29.94%
HDFC Asset Management Company Ltd.	19-Dec-18	1572.9	2070	31.60%
HDFC Bank Limited	10-Nov-16	1251.3	2494.5	99.35%
HDFC Life Insurance Co Ltd	19-Jan-18	485.05	548.3	13.04%
Hindustan Unilever Ltd.	13-Nov-17	1290.7	1870	44.88%
ICICI Bank Ltd.	6-Apr-18	278.65	443.9	59.30%
ICICI Prudential Life Insurance Company Ltd.	28-Jun-18	375.8	428	13.89%
Infosys Ltd.	17-Aug-17	487.6	773	58.53%
Kotak Mahindra Bank Ltd	10-Nov-16	822.1	1555	89.15%
Mahindra & Mahindra Ltd.	5-Jun-17	709.25	993	40.01%
Manappuram Finance Ltd.	24-Apr-18	119.2	144.95	21.60%
Marico Ltd.	4-Apr-18	325	396.6	22.03%
Nestle India Ltd.	27-Sep-18	9729.4	11950	22.82%
Oberoi Realty Ltd.	23-Nov-17	508.6	621.7	22.24%
Phoenix Mills Limited	7-July-19	655.15	660	0.07%
Pidilite Industries Limited	4-Oct-16	681.6	1313	92.63%
Prestige Estates Projects Limited	6-Jun-18	286.7	283.5	-1.12%
Rites Ltd.	19-Dec-18	283.7	301.4	6.24%
State Bank Of India	28-Aug-18	308	365	18.51%
Tata Global Beverages Ltd.	29-Jun-17	149.15	328.8	120.45%
Tata Consultancy Services Ltd.	8-Jan-18	1344.6	2292	70.46%
Trent Ltd.	19-Dec-18	348.4	449.05	28.89%
Ultratech Cement Ltd.	19-Dec-18	4084.6	4904	20.06%
Voltas Ltd.	27-Mar-18	613.9	658.4	7.25%
Whirlpool Of India Ltd.	7-Dec-16	872.25	1955	124.13%

NIFTY 50 STOCKS BELOW 200SMA

SCRIP NAME	SMA 200	CLOSING (26-07-2019)
WIPRO	265.35	263.60
RELIANCE	1229.91	1213.80
ZEEL	414.93	403.90
ITC	284.07	270.40
HCLTECH	1035.25	1001.45
HINDUNILVR	1734.10	1730.65
TATASTEEL	510.50	445.50
TATAMOTORS	178.28	147.15
CIPLA	546.49	532.10
M&M	688.70	564.45
HINDALCO	208.96	198.00
BPCL	350.07	343.80
HEROMOTOCO	2761.58	2467.30
SUNPHARMA	454.76	439.95
BRITANNIA	2952.56	2668.45
IOC	145.14	141.80
ONGC	154.44	141.90
VEDL	182.53	164.10
GAIL	168.22	132.95
EICHERMOT	21026.29	17186.55
INDUSINDBK	1551.39	1415.50
TECHM	740.16	643.50
JSWSTEEL	294.60	249.70
MARUTI	6944.33	5805.65
YESBANK	185.45	96.05
BAJAJ-AUTO	2802.58	2618.65
COALINDIA	244.26	210.65
INFRATEL	279.28	270.20
IBULHSGFIN	741.61	624.35

Securities in Ban For Trade Date 29-07-2019

NIL

Bulk Deals (BSE)

Deal Date	Scrip Name	Client Name	Deal Type	Quantity	Price
26-Jul-19	ESSARSHPNG	INDIA OPPORTUNITIES GROWTH FUND LTD - PINWOOD STRATEGY	B	7400000	9.50
26-Jul-19	ESSARSHPNG	CITOC INVESTMENT SERVICES LLP	S	7364883	9.50

Bulk Deals (NSE)

Deal Date	Scrip Name	Client Name	Deal Type	Quantity	Price
26-Jul-19	Tejas Networks Limited	HDFC MUTUAL FUND - HDFC GROWTH FUND	BUY	3000000	84.00
26-Jul-19	Tejas Networks Limited	EMERGING MARKETS STOCK COMMON TRUST FUND	SELL	482031	84.32
26-Jul-19	Tejas Networks Limited	COLUMBIA EMERGING MARKETS FUND E407698	SELL	1845804	84.32
26-Jul-19	Tejas Networks Limited	COLUMBIA VARIABLE PORTFOLIO-EMERGING MARKETS OPPORTUNITY FUND	SELL	669865	84.32

 Note- Executed on 26th July 2019. Bulk Deal Buy/Sell done by fund house is considered.

Research Analyst Registration No.	Contact	Website	mail Id
INH000002764	SMS: 'Arihant' to 56677	www.arihantcapital.com	research@arihantcapital.com

**Arihant is Forbes Asia’s ‘200 Best under a \$Billion’ Company
‘Best Emerging Commodities Broker’ awarded by UTV Bloomberg**

Disclaimer: This document has been prepared by Arihant Capital Markets Limited (hereinafter called as Arihant) and its subsidiaries and associated companies. This document does not constitute an offer or solicitation for the purchase and sale of any financial instrument by Arihant. Receipt and review of this document constitutes your agreement not to circulate, redistribute, retransmit or disclose to others the contents, opinions, conclusion, or information contained herein. This document has been prepared and issued on the basis of publicly available information, internally developed data and other sources believed to be reliable. Whilst meticulous care has been taken to ensure that the facts stated are accurate and opinions given are fair and reasonable, neither the analyst nor any employee of our company is in any way is responsible for its contents and nor is its accuracy or completeness guaranteed. This document is prepared for assistance only and is not intended to be and must not alone be taken as the basis for an investment decision. All recipients of this material should before dealing and or transacting in any of the products referred to in this material make their own investigation, seek appropriate professional advice. The investments discussed in this material may not be suitable for all investors. The recipient alone shall be fully responsible/are liable for any decision taken on the basis of this material. Arihant Capital Markets Ltd (including its affiliates) or its officers, directors, personnel and employees, including persons involved in the preparation or issuance of this material may; (a) from time to time, have positions in, and buy or sell or (b) be engaged in any other transaction and earn brokerage or other compensation in the financial instruments/products discussed herein or act as advisor or lender/borrower in respect of such securities/financial instruments/products or have other potential conflict of interest with respect to any recommendation and related information and opinions. The said persons may have acted upon and/or in a manner contradictory with the information contained here and may have a position or be otherwise interested in the investment referred to in this document before its publication. The user of this report assumes the entire risk of any use made of this data/report. Arihant especially states that it has no financial liability, whatsoever, to the users of this report.

Arihant Capital Markets Ltd
 #1011 Solitaire Corporate Park Building No.10 1st Floor
 Andheri Ghatkopar Link Road Chakala Andheri (E) Mumbai-400093
 T. 022-42254800. Fax: 022-42254880
www.arihantcapital.com