

To join our research group on TELEGRAM, please click on the links - <https://bit.ly/37T17JR> and <https://bit.ly/2svtU7k>

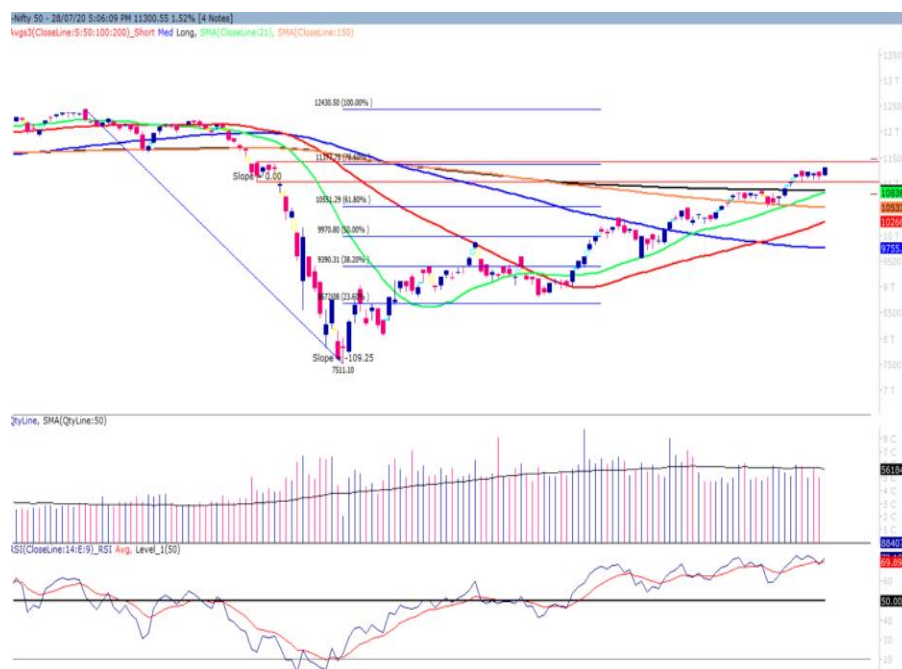
Wednesday, 29th July, 2020

Indian Indices	Last Price	(%) Chg
BSE	38492.95	1.47
NSE	11300.55	1.52
World Indices	Last Price	(%) Chg
Dow Jones	26379.28	-0.77
Nasdaq	10402.09	-1.27
Nikkei	22479.05	-0.79
Hang Seng	24886.72	0.46
FTSE	6129.26	0.40
Commodity	Last Price	(%) Chg
GOLD(\$/ounce)	1949.70	0.26
Silver (\$/Ounce)	24.32	0.08
Crude (\$/BBL)	43.34	0.28
Aluminium spot (\$/mt)	1724.00	-0.13
Copper SPOT (\$/mt)	6463.50	-0.08
Lead Spot (\$/MT)	1867.75	0.32
Natural gas \$/MMBtu	1.85	-0.59
Currency	Last Price	(%) Chg
USD-INR	74.83	0.02
EUR-INR	87.83	0.18
Bond	Last Price	(%) Chg
India 10 Yr Bond yield	5.85	-0.10

52 Wk High (A group)			52 Wk Low (A group)		
Company	Close Price	52 Wk High	Company	Close Price	52 Wk Low
BIRLASOFT	117	119	--	--	--
HCLTECH	712	715	--	--	--
M&M	620	624	--	--	--
INFOSYS	962	967	--	--	--
MINDTREE	1051	1064	--	--	--

Source: BSE

Market Technical Outlook



Nifty opened higher and momentum on the upside intensified as the day progressed which led Nifty to close in green. We still maintain our stance that prices have entered the supply zone of 11036 to 11433 (shown in red in the above graph). At present we are witnessing four days range breakout and prices have formed a bull candle. In coming trading session if prices trade above 11320 levels then it may test 11400 - 11500 levels. On the downside, 11100 - 11000 levels may act as support for the day.

We maintain our stance that Nifty is trading within the supply zone of 11050 - 11433. Any move above 11433 level would propel Nifty to test 11500 - 11600 levels in couple of weeks.

Foreign Institutional Investments (FII's) Activities

Name of Segment	Net Buyer/seller	Rs In Cr
Index Futures	Net Buy	993.10
Stock Futures	Net Buy	362.82
Net Future Position	Net Buy	1355.92
Index Options	Net Sell	-568.85
Stock Options	Net Sell	-51.70
Net Options Position	Net Sell	-620.55
FII In cash Segment	Net Buy	245.95
DII In cash Segment	Net Sell	-1017.40
Net Cash Position	Net Sell	-771.45

Guru Call: From the expert's desk
ort

Company	Reco Date	Reco Price (Buy on dips)	High till date	Return%
Aditiya Birla Capital	22-Nov-19	95.75	115.35	20.47%
Asian Paints Ltd.	30-Mar-17	1068.10	1916.70	79.45%
Avenue Supermarts Ltd.	31-Jul-17	898.55	2560.00	184.90%
Axis Bank Ltd.	10-Apr-18	519.30	827.75	59.40%
Bajaj Finance Ltd.	11-Oct-18	2271.00	4923.40	116.79%
Bajaj Finserv Ltd	1-Nov-16	3416.80	9950.00	191.21%
Bajaj Holdings And Investment Ltd	19-May-16	1499.10	3950.00	163.49%
Bandhan Bank Ltd.	19-Dec-18	556.40	650.00	16.82%
Bharat Petroleum Corporation Ltd.	23-Oct-19	531.50	549.00	3.29%
Century Textile and Industries Ltd	25-Nov-16	326.00	656.90	101.50%
Cipla Ltd	20-Mar-17	597.30	678.45	13.59%
Colgate Palmolive	16-Sep-19	1314.00	1642.60	25.01%
Container Corporation	22-Nov-19	577.00	603.00	4.51%
Dabur India	22-Oct-19	466.00	525.00	12.66%
DLF Ltd	10-Apr-19	194.30	265.90	36.85%
Emami Limited	26-Jun-19	290.35	357.70	23.20%
Godrej Industries Ltd.	12-Feb-18	550.70	657.60	19.41%
Godrej Properties Ltd.	19-Dec-18	685.30	1189.25	73.54%
Grasim Industries Ltd.	31-May-17	1132.50	1331.00	17.53%
Havells India Ltd.	8-Dec-17	525.75	806.85	53.47%
Housing Development Finance Corp Ltd	19-Dec-17	1720.00	2499.90	45.34%
HDFC Asset Management Company Ltd.	19-Dec-18	1572.90	3844.00	144.39%
HDFC Bank Limited	10-Nov-16	639.00	1305.50	104.30%
HDFC Life Insurance Co Ltd	19-Jan-18	485.05	646.40	33.26%
Hindustan Unilever Ltd.	13-Nov-17	1290.70	2308.20	78.83%
ICICI Bank Ltd.	6-Apr-18	278.65	552.20	98.17%
ICICI Prudential Life Insurance Company Ltd.	28-Jun-18	375.80	537.30	42.97%
ICICI Lombard General Insurance	19-Sep-19	1154.90	1440.40	24.72%
Infosys Ltd.	17-Aug-17	487.60	847.00	73.71%
Kansai Nerolac Paints	16-Dec-19	529.85	551.00	3.99%
Kotak Mahindra Bank Ltd	10-Nov-16	822.10	1740.00	111.65%
Mahindra & Mahindra Ltd.	5-Jun-17	709.25	993.00	40.01%
Manappuram Finance Ltd.	24-Apr-18	119.20	194.80	63.42%
Mahanagar Gas	15-Nov-19	1029.00	1246.20	21.11%
Marico Ltd.	4-Apr-18	325.00	404.00	24.31%
Nestle India Ltd.	27-Sep-18	9729.40	16835.15	73.03%
Oberoi Realty Ltd.	23-Nov-17	508.60	641.70	26.17%
Phoenix Mills Limited	7-Jul-19	655.15	979.00	49.43%
Pidilite Industries Limited	4-Oct-16	681.60	1661.00	143.69%
Prestige Estates Projects Limited	6-Jun-19	286.70	426.00	48.59%
Nam-India	25-Nov-18	377.00	452.90	20.13%
Rites Ltd.	19-Dec-18	226.96	331.00	45.84%
RBL Bank	22-Nov-19	334.00	391.20	17.13%
State Bank Of India	28-Aug-18	308.00	373.80	21.36%
Shipping Corporation	22-Nov-19	64.00	65.95	3.05%
Tata Chemicals Limited	24-Dec-19	296.89	339.70	14.42%
Tata Consumer	29-Jun-17	149.15	408.00	173.55%
Tata Consultancy Services Ltd.	8-Jan-18	1344.60	2296.20	70.77%
Trent Ltd.	19-Dec-18	348.40	794.00	127.90%
Ultratech Cement Ltd.	19-Dec-18	4084.60	4904.95	20.08%
Voltas Ltd.	27-Mar-18	613.90	741.00	20.70%
Whirlpool Of India Ltd.	7-Dec-16	872.25	2555.00	192.92%
Zee Entertainment	22-Nov-19	345.00	362.00	4.93%

Technical Levels for Nifty 50 Companies

Company	Closing 28-07-2020	Buy/Sell Trigger	Resistance 1	Resistance 2	Support 1	Support 2
ADANI PORTS	318.6	315.55	323.05	327.5	311.1	303.6
ASIAN PAINT	1759.65	1767.78	1784.52	1809.38	1742.92	1726.18
AXIS BANK	437.05	433.82	443.23	449.42	427.63	418.22
BAJAJ-AUTO	3119.35	3089.12	3160.23	3201.12	3048.23	2977.12
BAJAJ FINSV	6342.8	6301.38	6428.77	6514.73	6215.42	6088.03
BAJ FINANCE	3239.6	3220.27	3279.33	3319.07	3180.53	3121.47
BHARTIARTL	564.6	564.72	574.13	583.67	555.18	545.77
BPCL	461.5	464.07	471.13	480.77	454.43	447.37
BRITANNIA	3774.75	3789.37	3815.38	3856.02	3748.73	3722.72
CIPLA	662.6	657.53	670.82	679.03	649.32	636.03
COALINDIA	130.45	129.92	131.28	132.12	129.08	127.72
DRREDDY	4051.35	4050.23	4093.12	4134.88	4008.47	3965.58
EICHERMOT	21053.25	20923.82	21297.63	21542.02	20679.43	20305.62
GAIL	97.6	97.53	98.57	99.53	96.57	95.53
GRASIM	596.25	586.4	607.8	619.35	574.85	553.45
HCLTECH	712.45	708.07	720.43	728.42	700.08	687.72
HDFC	1897.35	1882.95	1921.4	1945.45	1858.9	1820.45
HDFC BANK	1086.65	1080.18	1100.87	1115.08	1065.97	1045.28
HEROMOTOCO	2841.25	2812.1	2879.15	2917.05	2774.2	2707.15
HINDALCO	164.7	162.83	167.12	169.53	160.42	156.13
HINDUNILVR	2242.55	2232.83	2254.62	2266.68	2220.77	2198.98
ICICIBANK	352.1	352.68	362.17	372.23	342.62	333.13
INDUSINDBK	526.95	522.45	533.5	540.05	515.9	504.85
INFRA TEL	190.5	191.1	194.45	198.4	187.15	183.8
INFY	962.85	957.2	973.2	983.55	946.85	930.85
IOC	93.4	93.77	94.88	96.37	92.28	91.17
ITC	195.4	196.37	197.68	199.97	194.08	192.77
JSW STEEL	214.9	212.7	217.95	221	209.65	204.4
KOTAK BANK	1384.05	1368.42	1417.43	1450.82	1335.03	1286.02
LT	913.5	909.83	920.67	927.83	902.67	891.83
M&M	620.35	611.63	634.52	648.68	597.47	574.58
MARUTI	6282.8	6211.43	6391.72	6500.63	6102.52	5922.23
NESTLE IND	17095.4	17192.58	17377.47	17659.54	16910.52	16725.63
NTPC	88.55	88.08	89.27	89.98	87.37	86.18
ONGC	79.9	80.15	81	82.1	79.05	78.2
POWERGRID	181.9	181.15	183.6	185.3	179.45	177
RELIANCE	2177.7	2174.12	2197.58	2217.47	2154.23	2130.77
SBIN	189.45	188.57	191.38	193.32	186.63	183.82
SHREECEM	21915.75	21681.92	22253.83	22591.92	21343.83	20771.92
SUN PHARMA	482.6	479.87	486.48	490.37	475.98	469.37
TATAMOTORS	106.45	105.22	108.43	110.42	103.23	100.02
TATA STEEL	358.5	357.08	361.42	364.33	354.17	349.83
TCS	2309.75	2281.58	2348.17	2386.58	2243.17	2176.58
TECHM	684.35	684.7	702.4	720.45	666.65	648.95
TITAN	1052.7	1045.4	1062.25	1071.8	1035.85	1019
ULTRACEMCO	4136.35	4070.5	4278.85	4421.35	3928	3719.65
UPL	448.95	447.47	453.43	457.92	442.98	437.02
VEDL	110.85	110.82	111.93	113.02	109.73	108.62
WIPRO	275.45	273.83	278.37	281.28	270.92	266.38
ZEEL	144.4	144.5	147.9	151.4	141	137.6

NIFTY 50 STOCKS BELOW 200SMA

SCRIP NAME	SMA 200	CLOSING (28-07-2020)
ZEEL	218.5	144.4
LT	1124.06	913.5
ITC	210.05	195.4
TATASTEEL	366.5	358.5
SBIN	252.53	189.45
GRASIM	659.66	596.25
TATAMOTORS	129.76	106.45
HDFC	2034.81	1897.35
HINDALCO	164.77	164.7
ICICIBANK	433.54	352.1
HDFCBANK	1116.17	1086.65
IOC	106.1	93.4
AXISBANK	580.71	437.05
ONGC	101.02	79.9
TITAN	1091.41	1052.7
VEDL	119.88	110.85
UPL	484.58	448.95
GAIL	107.92	97.6
INDUSINDBK	933.39	526.95
BAJFINANCE	3461.05	3239.6
ADANI PORTS	342.49	318.6
KOTAKBANK	1473.19	1384.05
JSWSTEEL	220.36	214.9
NTPC	104.16	88.55
BAJAJFINSV	7361.26	6342.8
COALINDIA	167.17	130.45
INFRA TEL	218.06	190.5
--	--	--
--	--	--
--	--	--
--	--	--
--	--	--
--	--	--
--	--	--
--	--	--
--	--	--

Weekly Expiry Most Active Nifty Call Option

Symbol	Expiry Date	Strike Price	Highest Open Interest (OI)
NIFTY	30-Jul-2020	11500	4,258,050
NIFTY	30-Jul-2020	11300	3,080,025
NIFTY	30-Jul-2020	11400	2,504,325

Weekly Expiry Most Active Nifty Put Option

Symbol	Expiry Date	Strike Price	Highest Open Interest (OI)
NIFTY	30-Jul-2020	11000	5,080,950
NIFTY	30-Jul-2020	11200	3,505,575
NIFTY	30-Jul-2020	10000	3,169,800

Securities in Ban For Trade Date 29-07-2020

CANBK, IBULHSGFIN, IDEA, INDUSINDBK.

Bulk Deals (BSE)

N/A

Bulk Deals (NSE)

N/A

Note- Executed on 28th Jul 2020. Bulk Deal Buy/Sell done by fund house is considered.

Research Analyst Registration No.	Contact	Website	mail Id
INH000002764	SMS: 'Arihant' to 56677	www.arihantcapital.com	arihant.research@arihantcapital.com

**Arihant is Forbes Asia's '200 Best under a \$Billion' Company
 'Best Emerging Commodities Broker' awarded by UTV Bloomberg**

Disclaimer: This document has been prepared by Arihant Capital Markets Limited (hereinafter called as Arihant) and its subsidiaries and associated companies. This document does not constitute an offer or solicitation for the purchase and sale of any financial instrument by Arihant. Receipt and review of this document constitutes your agreement not to circulate, redistribute, retransmit or disclose to others the contents, opinions, conclusion, or information contained herein. This document has been prepared and issued on the basis of publicly available information, internally developed data and other sources believed to be reliable. Whilst meticulous care has been taken to ensure that the facts stated are accurate and opinions given are fair and reasonable, neither the analyst nor any employee of our company is in any way is responsible for its contents and nor is its accuracy or completeness guaranteed. This document is prepared for assistance only and is not intended to be and must not alone be taken as the basis for an investment decision. All recipients of this material should before dealing and or transacting in any of the products referred to in this material make their own investigation, seek appropriate professional advice. The investments discussed in this material may not be suitable for all investors. The recipient alone shall be fully responsible/are liable for any decision taken on the basis of this material. Arihant Capital Markets Ltd (including its affiliates) or its officers, directors, personnel and employees, including persons involved in the preparation or issuance of this material may; (a) from time to time, have positions in, and buy or sell or (b) be engaged in any other transaction and earn brokerage or other compensation in the financial instruments/products discussed herein or act as advisor or lender/borrower in respect of such securities/financial instruments/products or have other potential conflict of interest with respect to any recommendation and related information and opinions. The said persons may have acted upon and/or in a manner contradictory with the information contained here and may have a position or be otherwise interested in the investment referred to in this document before its publication. The user of this report assumes the entire risk of any use made of this data/report. Arihant especially states that it has no financial liability, whatsoever, to the users of this report.

Arihant Capital Markets Ltd

#1011 Solitaire Corporate Park Building No.10 1st Floor
 Andheri Ghatkopar Link Road Chakala Andheri (E) Mumbai-400093
 T. 022-42254800. Fax: 022-42254880
www.arihantcapital.com