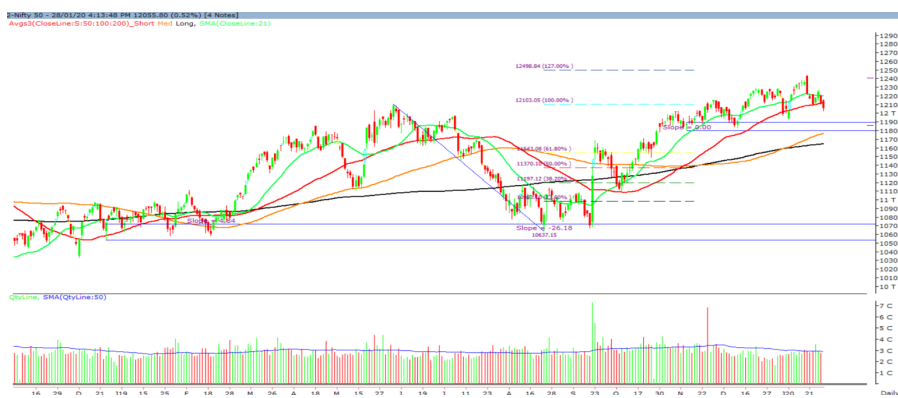


To join our research group on TELEGRAM, please click on the links - <https://bit.ly/37T17JR> and <https://bit.ly/2svtU7k>

Thursday, 30th January, 2020

Indian Indices	Last Price	(%) Chg
BSE	41198.66	0.57
NSE	12129.50	0.61
World Indices		
Dow Jones	28734.45	0.04
Nasdaq	9275.16	0.06
Nikkei	23028.91	-1.51
Hang Seng	26825.85	-1.17
FTSE	7483.57	0.04
Commodity	Last Price	(%) Chg
GOLD(\$/ounce)	1580.00	0.61
Silver (\$/Ounce)	17.60	0.62
Crude (\$/BBL)	59.59	-0.37
Aluminium spot (\$/mt)	1740.25	-0.06
Copper SPOT (\$/mt)	5624.50	-0.45
Lead Spot (\$/MT)	1828.75	-0.26
Natural gas \$/MMBtu	1.87	0.38
Currency	Last Price	(%) Chg
USD-INR	71.45	-0.13
EUR-INR	78.78	-0.23
Bond	Last Price	(%) Chg
India 10 Yr Bond yield	6.57	-0.08

Market Technical Outlook



Nifty opened higher traded in a narrow range with positive bias throughout the day to close in green. On the daily chart we are observing that prices have closed marginally above the 50-day SMA (12122). Hence, going forward 12100 on closing basis would remain crucial level, if breach then further selling may emerge. **Hence, as long as 12100 holds one should adopt cautiously positive approach at current level as stock specific activity is likely to emerge. Since, Nifty has marginally closed above 50-day SMA (12122) we are forced to give two scenario**

- 1) If Nifty opens in the range of 12088 – 12063 one can initiate long with a stop loss of 12050 for a target of 12144 – 12154 - 12179 levels.
- 2) If Nifty opens higher in the range of 12144 – 12154 then go short with a stop loss of 12170 for a target of 12113 – 12088 - 12056 levels.

News for stocks

PIDILITE	Pidilite Industries reported strong performance during Q3FY20. Revenue for the quarter up by 4.3% while EBITDA grew by 35.8% on YoY basis. PAT grew by 58% YoY to Rs 346 cr
MOIL	MOIL received environmental clearance for enhancement of production capacity from 90,000 TPA to 203,200 TPA for its manganese ore mine at Maharashtra.

Foreign Institutional Investments (FII's) Activities

Name of Segment	Net Buyer/seller	Rs In Cr
Index Futures	Net Buy	440.31
Stock Futures	Net Buy	890.86
Net Future Position	Net Buy	1331.17
Index Options	Net Sell	-425.49
Stock Options	Net Buy	21.85
Net Options Position	Net Sell	403.64
FII In cash Segment	Net Sell	-1014.27
DII In cash Segment	Net Buy	1520.90
Net Cash Position	Net Buy	506.63

52 Wk High (A group)			52 Wk Low (A group)		
Company	Close Price	52 Wk High	Company	Close Price	52 Wk Low
ADANI	231	238	OILIN	140	136
APLL	632	641	--	--	--
BAJFINAN	4421	4444	--	--	--
BERGER	573	574	--	--	--
COROMAN	615	623	--	--	--

Source: BSE

Technical Levels for Nifty 50 Companies

Company	Closing 29-01-2020	Buy/Sell Trigger	Resistance 1	Resistance 2	Support 1	Support 2
ADANI PORTS	383.35	381.62	389.48	395.62	375.48	367.62
ASIAN PAINT	1796.95	1793.93	1806.87	1816.78	1784.02	1771.08
AXIS BANK	735.25	738.1	742.65	750.05	730.7	726.15
BAJAJ-AUTO	3091.85	3083.62	3107.23	3122.62	3068.23	3044.62
BAJAJ FINSV	9894.25	9824.08	9999.17	10104.08	9719.17	9544.08
BAJ FINANCE	4419	4359.37	4503.63	4588.27	4274.73	4130.47
BHARTIARTL	490.25	493.3	498.35	506.45	485.2	480.15
BPCL	479.05	480.87	485.08	491.12	474.83	470.62
BRITANNIA	3214.2	3216.58	3243.12	3272.03	3187.67	3161.13
CIPLA	461.55	463.1	465.85	470.15	458.8	456.05
COALINDIA	191.05	190.68	193.37	195.68	188.37	185.68
DRREDDY	3148.25	3149.77	3200.33	3252.42	3097.68	3047.12
EICHER MOT	20192.25	20509.42	20918.83	21645.42	19782.83	19373.42
GAIL	126.25	126.9	128.2	130.15	124.95	123.65
GRASIM	802.3	808.38	816.77	831.23	793.92	785.53
HCLTECH	608.85	607.52	612.83	616.82	603.53	598.22
HDFC	2404.25	2417.25	2434.5	2464.75	2387	2369.75
HDFC BANK	1235.85	1233.37	1244.48	1253.12	1224.73	1213.62
HEROMOTOCO	2486.35	2488.78	2507.57	2528.78	2467.57	2448.78
HINDALCO	197.75	198.42	199.73	201.72	196.43	195.12
HINDUNILVR	2074.2	2074.02	2085.98	2097.77	2062.23	2050.27
ICICIBANK	526.6	528.9	532.5	538.4	523	519.4
INDUSINDBK	1258.25	1261.98	1272.97	1287.68	1247.27	1236.28
INFRA TEL	245.2	243.48	248.62	252.03	240.07	234.93
INFY	789.7	788.92	793.58	797.47	785.03	780.37
IOC	118.3	118.68	119.57	120.83	117.42	116.53
ITC	236.65	235.15	239.15	241.65	232.65	228.65
JSW STEEL	261.25	261.38	264.47	267.68	258.17	255.08
KOTAK BANK	1640.45	1636.57	1650.08	1659.72	1626.93	1613.42
LT	1365.7	1364.25	1376.4	1387.1	1353.55	1341.4
M&M	577.75	576.87	581.58	585.42	573.03	568.32
MARUTI	7010.3	7033.85	7092.7	7175.1	6951.45	6892.6
NESTLE IND	15866.75	15735.57	16031.13	16195.52	15571.18	15275.62
NTPC	113.2	113.28	114.82	116.43	111.67	110.13
ONGC	117.65	117.42	118.38	119.12	116.68	115.72
POWERGRID	192.4	191.82	194.38	196.37	189.83	187.27
RELIANCE	1479.85	1479.43	1494.82	1509.78	1464.47	1449.08
SBIN	316.45	317.23	318.92	321.38	314.77	313.08
SUN PHARMA	450.1	452.1	454.75	459.4	447.45	444.8
TATAMOTORS	188.05	185.17	191.78	195.52	181.43	174.82
TATA STEEL	452.2	453.83	458.07	463.93	447.97	443.73
TCS	2154.6	2163.85	2177.7	2200.8	2140.75	2126.9
TECHM	804.15	801.63	809.72	815.28	796.07	787.98
TITAN	1186.2	1191.9	1202.2	1218.2	1175.9	1165.6
ULTRACEMCO	4568.2	4593.73	4627.97	4687.73	4533.97	4499.73
UPL	542.15	541.7	546.35	550.55	537.5	532.85
VEDL	142.2	143.17	144.43	146.67	140.93	139.67
WIPRO	246.75	245.8	248.35	249.95	244.2	241.65
YES BANK	41.2	41.52	42.03	42.87	40.68	40.17
ZEEL	274.25	274.32	277.03	279.82	271.53	268.82

(Source – IRIS)

Guru Call: From the expert's desk

ort

Company	Reco Date	Reco Price (Buy on dips)	High till date	Return%
Aditya Birla Capital	22-Nov-19	95.75	115.35	20.47%
Asian Paints Ltd.	30-Mar-17	1068.1	1862.25	74.35%
Avenue Supermarts Ltd.	31-Jul-17	898.55	2010	123.69%
Axis Bank Ltd.	10-Apr-18	519.3	827.75	59.40%
Bajaj Finance Ltd.	11-Oct-18	2271	4295.75	89.16%
Bajaj Finserv Ltd	1-Nov-16	3416.8	9764.35	185.77%
Bajaj Holdings And Investment Ltd	19-May-16	1499.1	3903.95	160.42%
Bandhan Bank Ltd.	19-Dec-18	556.4	650	16.82%
Bharat Petroleum Corporation Ltd.	23-Oct-19	531.5	549	3.29%
Century Textile and Industries Ltd	25-Nov-16	326	634	94.48%
Cipla Ltd	20-Mar-17	597.3	678.45	13.59%
Colgate Palmolive	16-Sep-19	1314	1642.6	25.01%
Container Corporation	22-Nov-19	577	603	4.51%
Dabur India	22-Oct-19	466	501	7.51%
DLF Ltd	10-Apr-19	194.3	265.9	36.85%
Emami Limited	26-Jun-19	290.35	357.7	23.20%
Godrej Industries Ltd.	12-Feb-18	550.7	657.6	19.41%
Godrej Properties Ltd.	19-Dec-18	685.3	1119.6	63.37%
Grasim Industries Ltd.	31-May-17	1132.5	1331	17.53%
Havells India Ltd.	8-Dec-17	525.75	806.85	53.47%
Housing Development Finance Corp Ltd	19-Dec-17	1720	2499.9	45.34%
HDFC Asset Management Company Ltd.	19-Dec-18	1572.9	3844	144.39%
HDFC Bank Limited	10-Nov-16	639	1305.5	104.30%
HDFC Life Insurance Co Ltd	19-Jan-18	485.05	646.4	33.26%
Hindustan Unilever Ltd.	13-Nov-17	1290.7	2190	69.68%
ICICI Bank Ltd.	6-Apr-18	278.65	552.2	98.17%
ICICI Prudential Life Insurance Company Ltd.	28-Jun-18	375.8	537.3	42.97%
ICICI Lombard General Insurance	19-Sep-19	1154.9	1440.4	24.72%
Infosys Ltd.	17-Aug-17	487.6	847	73.71%
Kansai Nerolac Paints	16-Dec-19	529.85	551	3.99%
Kotak Mahindra Bank Ltd	10-Nov-16	822.1	1734.8	111.02%
Mahindra & Mahindra Ltd.	5-Jun-17	709.25	993	40.01%
Manappuram Finance Ltd.	24-Apr-18	119.2	189	58.56%
Mahanagar Gas	15-Nov-19	1029	1198	16.42%
Marico Ltd.	4-Apr-18	325	404	24.31%
Nestle India Ltd.	27-Sep-18	9729.4	15850	62.91%
Oberoi Realty Ltd.	23-Nov-17	508.6	641.7	26.17%
Phoenix Mills Limited	7-Jul-19	655.15	900	37.37%
Pidilite Industries Limited	4-Oct-16	681.6	1493.5	119.12%
Prestige Estates Projects Limited	6-Jun-19	286.7	426	48.59%
Reliance Nippon	25-Nov-18	377	386.4	2.49%
Rites Ltd.	19-Dec-18	226.96	324.8	43.11%
RBL Bank	22-Nov-19	334	391.2	17.13%
State Bank Of India	28-Aug-18	308	373.8	21.36%
Shipping Corporation	22-Nov-19	64	65.95	3.05%
Tata Chemicals Limited	24-Dec-19	682.8	762	11.60%
Tata Global Beverages Ltd.	29-Jun-17	149.15	399.45	167.82%
Tata Consultancy Services Ltd.	8-Jan-18	1344.6	2296.2	70.77%
Trent Ltd.	19-Dec-18	348.4	611.95	75.65%
Ultratech Cement Ltd.	19-Dec-18	4084.6	4904.95	20.08%
Voltas Ltd.	27-Mar-18	613.9	730.95	19.07%
Whirlpool Of India Ltd.	7-Dec-16	872.25	2510	187.76%
Zee Entertainment	22-Nov-19	345	362	4.93%

NIFTY 50 STOCKS BELOW 200SMA

SCRIP NAME	SMA 200	CLOSING (29-01-2020)
WIPRO	261.88	246.75
ZEEL	324.25	273.6
LT	1397.08	1365.7
ITC	261.76	236.65
SBIN	316.77	316.45
CIPLA	499.59	461.25
M&M	583.21	577.75
HEROMOTOCO	2562.17	2486.35
IOC	139.87	118.3
ONGC	142.59	117.65
VEDL	155.9	142.15
UPL	598.49	542.15
GAIL	139.92	126.25
INDUSINDBK	1451.46	1258.25
ADANI PORTS	387.57	383.35
POWERGRID	196.72	192.4
NTPC	124.17	113.2
YESBANK	92.21	41.2
COALINDIA	216.7	191.05
INFRA TEL	256.68	245.2

Bulk Deals (BSE)

Deal Date	Scrip Name	Client Name	Deal Type	Quantity	Price
29-Jan-20	CCL	SMALLCAP WORLD FUND INC	S	1072916	207.69
29-Jan-20	CCL	NORGES BANK ON ACCOUNT OF THE GOVERNMENT PENSION FUND GLOBAL	B	2030481	199.00
29-Jan-20	CCL	SMALLCAP WORLD FUND INC	S	3337553	199.22

Bulk Deals (NSE)

Deal Date	Scrip Name	Client Name	Deal Type	Quantity	Price
29-Jan-20	Aptech Limited	WALL STREET CAPITAL MARKETS PRIVATE LIMITED	BUY	250000	166.09
29-Jan-20	CCL Products (I) Ltd	SMALLCAP WORLD FUND INC	SELL	2102382	206.74

Note- Executed on 29th Jan 2020. Bulk Deal Buy/Sell done by fund house is considered.

Weekly Expiry Most Active Nifty Call Option

Symbol	Expiry Date	Strike Price	Highest Open Interest (OI)
NIFTY	30-Jan-19	12200	5283525
NIFTY	30-Jan-19	12300	4209825
NIFTY	30-Jan-19	12500	2942250

Weekly Expiry Most Active Nifty Put Option

Symbol	Expiry Date	Strike Price	Highest Open Interest (OI)
NIFTY	30-Jan-19	12000	3547575
NIFTY	30-Jan-19	11500	2748225
NIFTY	30-Jan-19	12100	2755275

Securities in Ban For Trade Date 30-01-2020

NIL

Research Analyst Registration No.	Contact	Website	mail Id
INH000002764	SMS: 'Arihant' to 56677	www.arihantcapital.com	arihant.research@arihantcapital.com

**Arihant is Forbes Asia's '200 Best under a \$Billion' Company
'Best Emerging Commodities Broker' awarded by UTV Bloomberg**

Disclaimer: This document has been prepared by Arihant Capital Markets Limited (hereinafter called as Arihant) and its subsidiaries and associated companies. This document does not constitute an offer or solicitation for the purchase and sale of any financial instrument by Arihant. Receipt and review of this document constitutes your agreement not to circulate, redistribute, retransmit or disclose to others the contents, opinions, conclusion, or information contained herein. This document has been prepared and issued on the basis of publicly available information, internally developed data and other sources believed to be reliable. Whilst meticulous care has been taken to ensure that the facts stated are accurate and opinions given are fair and reasonable, neither the analyst nor any employee of our company is in any way is responsible for its contents and nor is its accuracy or completeness guaranteed. This document is prepared for assistance only and is not intended to be and must not alone be taken as the basis for an investment decision. All recipients of this material should before dealing and or transacting in any of the products referred to in this material make their own investigation, seek appropriate professional advice. The investments discussed in this material may not be suitable for all investors. The recipient alone shall be fully responsible/are liable for any decision taken on the basis of this material. Arihant Capital Markets Ltd (including its affiliates) or its officers, directors, personnel and employees, including persons involved in the preparation or issuance of this material may; (a) from time to time, have positions in, and buy or sell or (b) be engaged in any other transaction and earn brokerage or other compensation in the financial instruments/products discussed herein or act as advisor or lender/borrower in respect of such securities/financial instruments/products or have other potential conflict of interest with respect to any recommendation and related information and opinions. The said persons may have acted upon and/or in a manner contradictory with the information contained here and may have a position or be otherwise interested in the investment referred to in this document before its publication. The user of this report assumes the entire risk of any use made of this data/report. Arihant especially states that it has no financial liability, whatsoever, to the users of this report.

Arihant Capital Markets Ltd

#1011 Solitaire Corporate Park Building No.10 1st Floor
 Andheri Ghatkopar Link Road Chakala Andheri (E) Mumbai-400093
 T. 022-42254800. Fax: 022-42254880
www.arihantcapital.com