

To join our research group on TELEGRAM, please click on the links - <https://bit.ly/37T17JR> and <https://bit.ly/2svtU7k>

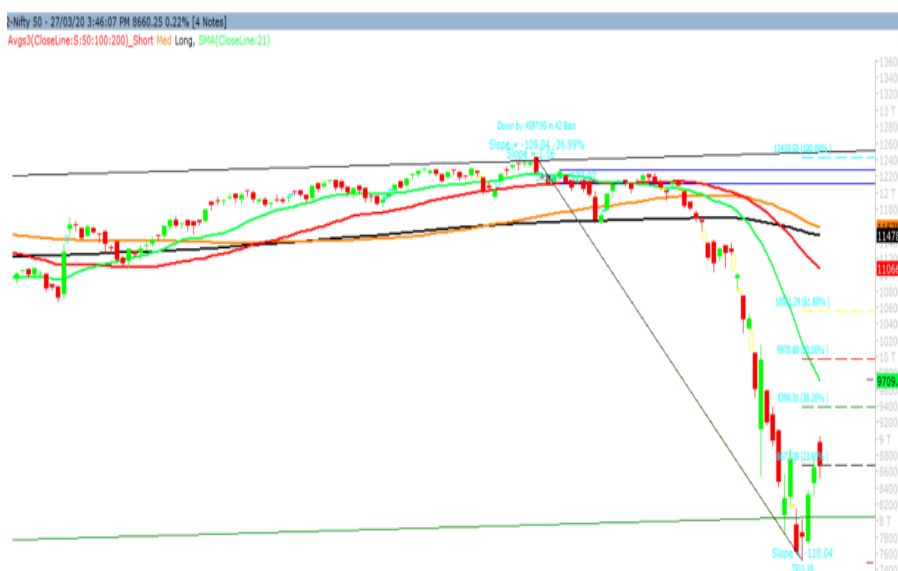
Monday, 30th March, 2020

Indian Indices	Last Price	(%) Chg
BSE	29815.59	-0.44
NSE	8660.25	0.22
World Indices	Last Price	(%) Chg
Dow Jones	21636.78	-4.06
Nasdaq	7502.38	-3.79
Nikkei	18754.78	-3.31
Hang Seng	23155.07	-1.36
FTSE	5510.33	-5.25
Commodity	Last Price	(%) Chg
GOLD(\$/ounce)	1632.70	0.47
Silver (\$/Ounce)	14.14	-2.71
Crude (\$/BBL)	26.63	-4.72
Aluminium spot (\$/mt)	1543.00	-0.53
Copper SPOT (\$/mt)	4762.75	-1.04
Lead Spot (\$/MT)	1685.75	-0.27
Natural gas \$/MMBtu	1.62	-2.99
Currency	Last Price	(%) Chg
USD-INR	75.86	-0.41
EUR-INR	83.30	0.61
Bond	Last Price	(%) Chg
India 10 Yr Bond yield	6.14	-1.30

52 Wk High (A group)			52 Wk Low (A group)		
Company	Close Price	52 Wk High	Company	Close Price	52 Wk Low
--	--	--	CUMMINS	359	350
--	--	--	FRETAIL	87.2	87.2
--	--	--	SOBHA	130	129
--	--	--	SAIL	21.1	21.0
--	--	--	TVSMOTOR	304	298

Source: BSE

Market Technical Outlook



Nifty opened higher traded with choppiness but finally managed to close in red. On the daily chart, we are observing a bear candle which has closed marginally below the 8672 (23% Fibonacci level) Shown above in the graph. In coming trading session if Nifty trades above 8900 level then it is likely to test 9100 – 9200 levels. On the downside, 8500 – 8300 remains crucial support. **We still maintain our stance that temporary bottom may be in place and a pullback rally is in offing. However, trend remains down hence at higher levels we may witness selling pressure. Hence cautiously positive approach should be adopted at current level.**

News for stocks

--	--
--	--

Foreign Institutional Investments (FII's) Activities

Name of Segment	Net Buyer/seller	Rs In Cr
Index Futures	Net Sell	-29.19
Stock Futures	Net Buy	482.32
Net Future Position	Net Buy	453.13
Index Options	Net Buy	336.45
Stock Options	Net Buy	11.97
Net Options Position	Net Buy	348.42
FII In cash Segment	Net Buy	355.78
DII In cash Segment	Net Buy	1703.72
Net Cash Position	Net Buy	2059.50

Technical Levels for Nifty 50 Companies

Company	Closing 27-03-2020	Buy/Sell Trigger	Resistance 1	Resistance 2	Support 1	Support 2
ADANI PORTS	251.30	251.63	259.27	267.23	243.67	236.03
ASIAN PAINT	1604.15	1606.53	1662.87	1721.58	1547.82	1491.48
AXIS BANK	359.75	374.42	394.78	429.82	339.38	319.02
BAJAJ-AUTO	2053.45	2075.87	2144.58	2235.72	1984.73	1916.02
BAJAJ FINSV	4890.60	5075.20	5475.40	6060.20	4490.40	4090.20
BAJFINANCE	2542.30	2694.10	2888.20	3234.10	2348.20	2154.10
BHARTIARTL	448.95	453.75	470.00	491.05	432.70	416.45
BPCL	278.75	285.65	297.10	315.45	267.30	255.85
BRITANNIA	2529.25	2581.07	2657.13	2785.02	2453.18	2377.12
CIPLA	407.65	403.53	415.12	422.58	396.07	384.48
COALINDIA	131.70	129.88	134.77	137.83	126.82	121.93
DRREDDY	2916.50	2936.52	3026.93	3137.37	2826.08	2735.67
EICHERMOT	14319.80	14571.93	15143.87	15967.93	13747.87	13175.93
GAIL	69.50	71.25	73.40	77.30	67.35	65.20
GRASIM	460.90	467.18	487.52	514.13	440.57	420.23
HCLTECH	430.65	436.20	451.90	473.15	414.95	399.25
HDFC	1754.00	1771.23	1832.42	1910.83	1692.82	1631.63
HDFCBANK	904.45	921.73	971.37	1038.28	854.82	805.18
HEROMOTOCO	1661.20	1710.72	1780.83	1900.47	1591.08	1520.97
HINDALCO	91.55	93.72	97.13	102.72	88.13	84.72
HINDUNILVR	2140.55	2176.23	2231.97	2323.38	2084.82	2029.08
ICICIBANK	339.85	341.80	357.60	375.35	324.05	308.25
INDUSINDBK	411.10	447.33	502.32	593.53	356.12	301.13
INFRA TEL	156.80	158.43	163.37	169.93	151.87	146.93
INFY	652.70	656.62	670.98	689.27	638.33	623.97
IOC	76.90	77.70	79.35	81.80	75.25	73.60
ITC	163.20	161.40	167.80	172.40	156.80	150.40
JSWSTEEL	151.45	151.37	156.53	161.62	146.28	141.12
KOTAK BANK	1399.10	1407.88	1441.22	1483.33	1365.77	1332.43
LT	837.05	846.35	880.70	924.35	802.70	768.35
M&M	294.50	293.43	306.07	317.63	281.87	269.23
MARUTI	4646.10	4779.20	5003.40	5360.70	4421.90	4197.70
NESTLEIND	15108.60	15147.53	15495.07	15881.53	14761.07	14413.53
NTPC	83.00	82.55	84.85	86.70	80.70	78.40
ONGC	64.45	64.42	66.03	67.62	62.83	61.22
POWERGRID	160.00	160.97	165.28	170.57	155.68	151.37
RELIANCE	1065.60	1073.03	1099.87	1134.13	1038.77	1011.93
SBIN	195.95	200.95	206.90	217.85	190.00	184.05
SUNPHARMA	338.25	341.25	349.50	360.75	330.00	321.75
TATAMOTORS	70.70	71.98	74.62	78.53	68.07	65.43
TATASTEEL	277.25	282.23	290.27	303.28	269.22	261.18
TCS	1824.50	1808.30	1866.20	1907.90	1766.60	1708.70
TECHM	504.10	513.63	529.27	554.43	488.47	472.83
TITAN	937.05	932.68	969.37	1001.68	900.37	863.68
ULTRACEMCO	3143.60	3212.00	3321.60	3499.60	3034.00	2924.40
UPL	322.20	324.50	333.70	345.20	313.00	303.80
VEDL	63.75	65.20	67.40	71.05	61.55	59.35
WIPRO	183.50	184.83	188.17	192.83	180.17	176.83
YESBANK	26.35	28.53	31.07	35.78	23.82	21.28
ZEEL	128.05	131.23	135.47	142.88	123.82	119.58

(Source – IRIS)

Guru Call: From the expert's desk

Company	Reco Date	Reco Price (Buy on dips)	High till date	Return%
Aditiya Birla Capital	22-Nov-19	95.75	115.35	20.47%
Asian Paints Ltd.	30-Mar-17	1068.10	1916.70	79.45%
Avenue Supermarts Ltd.	31-Jul-17	898.55	2560.00	184.90%
Axis Bank Ltd.	10-Apr-18	519.30	827.75	59.40%
Bajaj Finance Ltd.	11-Oct-18	2271.00	4923.40	116.79%
Bajaj Finserv Ltd	1-Nov-16	3416.80	9950.00	191.21%
Bajaj Holdings And Investment Ltd	19-May-16	1499.10	3950.00	163.49%
Bandhan Bank Ltd.	19-Dec-18	556.40	650.00	16.82%
Bharat Petroleum Corporation Ltd.	23-Oct-19	531.50	549.00	3.29%
Century Textile and Industries Ltd	25-Nov-16	326.00	656.90	101.50%
Cipla Ltd	20-Mar-17	597.30	678.45	13.59%
Colgate Palmolive	16-Sep-19	1314.00	1642.60	25.01%
Container Corporation	22-Nov-19	577.00	603.00	4.51%
Dabur India	22-Oct-19	466.00	525.00	12.66%
DLF Ltd	10-Apr-19	194.30	265.90	36.85%
Emami Limited	26-Jun-19	290.35	357.70	23.20%
Godrej Industries Ltd.	12-Feb-18	550.70	657.60	19.41%
Godrej Properties Ltd.	19-Dec-18	685.30	1189.25	73.54%
Grasim Industries Ltd.	31-May-17	1132.50	1331.00	17.53%
Havells India Ltd.	8-Dec-17	525.75	806.85	53.47%
Housing Development Finance Corp Ltd	19-Dec-17	1720.00	2499.90	45.34%
HDFC Asset Management Company Ltd.	19-Dec-18	1572.90	3844.00	144.39%
HDFC Bank Limited	10-Nov-16	639.00	1305.50	104.30%
HDFC Life Insurance Co Ltd	19-Jan-18	485.05	646.40	33.26%
Hindustan Unilever Ltd.	13-Nov-17	1290.70	2308.20	78.83%
ICICI Bank Ltd.	6-Apr-18	278.65	552.20	98.17%
ICICI Prudential Life Insurance Company Ltd.	28-Jun-18	375.80	537.30	42.97%
ICICI Lombard General Insurance	19-Sep-19	1154.90	1440.40	24.72%
Infosys Ltd.	17-Aug-17	487.60	847.00	73.71%
Kansai Nerolac Paints	16-Dec-19	529.85	551.00	3.99%
Kotak Mahindra Bank Ltd	10-Nov-16	822.10	1740.00	111.65%
Mahindra & Mahindra Ltd.	5-Jun-17	709.25	993.00	40.01%
Manappuram Finance Ltd.	24-Apr-18	119.20	194.80	63.42%
Mahanagar Gas	15-Nov-19	1029.00	1246.20	21.11%
Marico Ltd.	4-Apr-18	325.00	404.00	24.31%
Nestle India Ltd.	27-Sep-18	9729.40	16835.15	73.03%
Oberoi Realty Ltd.	23-Nov-17	508.60	641.70	26.17%
Phoenix Mills Limited	7-Jul-19	655.15	979.00	49.43%
Pidilite Industries Limited	4-Oct-16	681.60	1661.00	143.69%
Prestige Estates Projects Limited	6-Jun-19	286.70	426.00	48.59%
Nam-India	25-Nov-18	377.00	452.90	20.13%
Rites Ltd.	19-Dec-18	226.96	331.00	45.84%
RBL Bank	22-Nov-19	334.00	391.20	17.13%
State Bank Of India	28-Aug-18	308.00	373.80	21.36%
Shipping Corporation	22-Nov-19	64.00	65.95	3.05%
Tata Chemicals Limited	24-Dec-19	296.89	339.70	14.42%
Tata Consumer	29-Jun-17	149.15	408.00	173.55%
Tata Consultancy Services Ltd.	8-Jan-18	1344.60	2296.20	70.77%
Trent Ltd.	19-Dec-18	348.40	794.00	127.90%
Ultratech Cement Ltd.	19-Dec-18	4084.60	4904.95	20.08%
Voltas Ltd.	27-Mar-18	613.90	741.00	20.70%
Whirlpool Of India Ltd.	7-Dec-16	872.25	2555.00	192.92%
Zee Entertainment	22-Nov-19	345.00	362.00	4.93%

NIFTY 50 STOCKS BELOW 200SMA

SCRIP NAME	SMA 200	CLOSING (27-03-2020)
INFY	745.28	652.70
WIPRO	248.13	183.50
RELIANCE	1357.66	1065.60
ZEEL	290.08	128.05
LT	1340.81	837.05
ITC	240.05	163.20
HCLTECH	548.33	430.65
TATASTEEL	410.72	277.25
SBIN	307.24	195.95
GRASIM	757.29	460.90
TATAMOTORS	148.71	70.70
CIPLA	471.97	407.65
M&M	544.92	294.50
HDFC	2199.99	1754.00
HINDALCO	188.06	91.55
BPCL	431.06	278.75
ICICIBANK	463.88	339.85
HDFCBANK	1192.28	904.45
HEROMOTOCO	2452.04	1661.20
SUNPHARMA	415.01	338.25
BRITANNIA	2929.86	2529.25
ASIANPAINT	1670.48	1604.15
IOC	129.06	76.90
AXISBANK	704.39	359.75
ONGC	126.53	64.45
TITAN	1180.62	937.05
VEDL	144.42	63.75
UPL	564.75	322.20
GAIL	125.92	69.50
SHREECEM	20749.04	17666.25
EICHERMOT	19107.98	14319.80
INDUSINDBK	1323.05	411.10
BAJFINANCE	3851.04	2542.30
ADANIPTS	374.86	251.30
POWERGRID	194.33	160.00
ULTRACEMCO	4218.72	3143.60
TCS	2126.46	1824.50
KOTAKBANK	1565.25	1399.10
TECHM	726.86	504.10
JSWSTEEL	244.69	151.45
NTPC	118.08	83.00
MARUTI	6615.90	4646.10
BAJAJ-AUTO	2918.57	2053.45
BAJAJFINSV	8330.17	4890.60
COALINDIA	199.69	131.70
INFRADEL	242.25	156.80

Weekly Expiry Most Active Nifty Call Option

Symbol	Expiry Date	Strike Price	Highest Open Interest (OI)
NIFTY	01-Apr-2020	10000	1363800
NIFTY	01-Apr-2020	9500	1027800
NIFTY	01-Apr-2020	10500	810675

Weekly Expiry Most Active Nifty Put Option

Symbol	Expiry Date	Strike Price	Highest Open Interest (OI)
NIFTY	01-Apr-2020	8000	994200
NIFTY	01-Apr-2020	7000	920775
NIFTY	01-Apr-2020	8500	848775

Securities in Ban For Trade Date 30-03-2020

NIL

Bulk Deals (BSE)

Deal Date	Scrip Name	Client Name	Deal Type	Quantity	Price
27-Mar-20	HDFCLIFE	STANDARD LIFE (MAURITIUS HOLDINGS) 2006 LTD	S	50000000	441.24
27-Mar-20	LEMONTREE	WF ASIAN RECONNAISSANCE FUND LIMITED	B	5167305	23.64
27-Mar-20	PACL	HDFC BANK LIMITED	S	141919	25.50

Bulk Deals (NSE)

Deal Date	Scrip Name	Client Name	Deal Type	Quantity	Price
27-Mar-20	MATRIMONY	GOLDMAN SACHS INDIA LTD	SELL	484902	280.02
27-Mar-20	MCX	WF ASIAN SMALLER COMPANIES FUND LIMITED	BUY	300000	1,044.65
27-Mar-20	SUPRAJIT	HDFC MUTUAL FUND (HDFC SMALL AND MID CAP FUND)	BUY	3000000	122.00

Note- Executed on 27th Mar 2020. Bulk Deal Buy/Sell done by fund house is considered.

Research Analyst Registration No.	Contact	Website	mail Id
INH000002764	SMS: 'Arihant' to 56677	www.arihantcapital.com	arihant.research@arihantcapital.com

**Arihant is Forbes Asia's '200 Best under a \$Billion' Company
'Best Emerging Commodities Broker' awarded by UTV Bloomberg**

Disclaimer: This document has been prepared by Arihant Capital Markets Limited (hereinafter called as Arihant) and its subsidiaries and associated companies. This document does not constitute an offer or solicitation for the purchase and sale of any financial instrument by Arihant. Receipt and review of this document constitutes your agreement not to circulate, redistribute, retransmit or disclose to others the contents, opinions, conclusion, or information contained herein. This document has been prepared and issued on the basis of publicly available information, internally developed data and other sources believed to be reliable. Whilst meticulous care has been taken to ensure that the facts stated are accurate and opinions given are fair and reasonable, neither the analyst nor any employee of our company is in any way is responsible for its contents and nor is its accuracy or completeness guaranteed. This document is prepared for assistance only and is not intended to be and must not alone be taken as the basis for an investment decision. All recipients of this material should before dealing and or transacting in any of the products referred to in this material make their own investigation, seek appropriate professional advice. The investments discussed in this material may not be suitable for all investors. The recipient alone shall be fully responsible/are liable for any decision taken on the basis of this material. Arihant Capital Markets Ltd (including its affiliates) or its officers, directors, personnel and employees, including persons involved in the preparation or issuance of this material may; (a) from time to time, have positions in, and buy or sell or (b) be engaged in any other transaction and earn brokerage or other compensation in the financial instruments/products discussed herein or act as advisor or lender/borrower in respect of such securities/financial instruments/products or have other potential conflict of interest with respect to any recommendation and related information and opinions. The said persons may have acted upon and/or in a manner contradictory with the information contained here and may have a position or be otherwise interested in the investment referred to in this document before its publication. The user of this report assumes the entire risk of any use made of this data/report. Arihant especially states that it has no financial liability, whatsoever, to the users of this report.

Arihant Capital Markets Ltd

#1011 Solitaire Corporate Park Building No.10 1st Floor
 Andheri Ghatkopar Link Road Chakala Andheri (E) Mumbai-400093
 T. 022-42254800. Fax: 022-42254880
www.arihantcapital.com