

To join our research group on TELEGRAM, please click on the links - <https://bit.ly/37T17JR> and <https://bit.ly/2svtU7k>

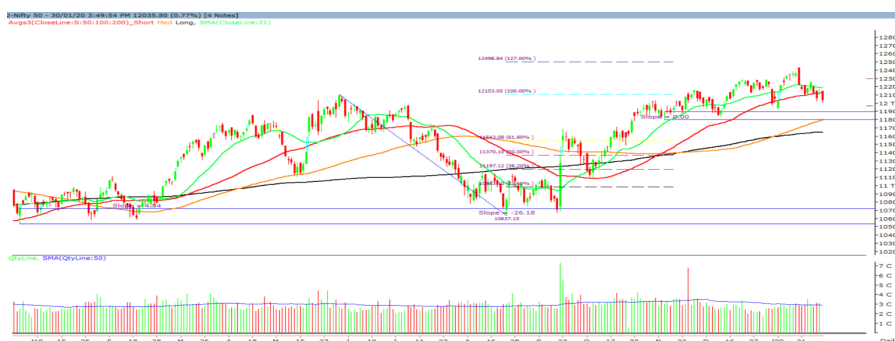
Friday, 31st January, 2020

Indian Indices	Last Price	(%) Chg
BSE	40913.82	-0.69
NSE	12035.80	-0.77
World Indices		
Dow Jones	28859.44	0.43
Nasdaq	9298.93	0.26
Nikkei	23200.38	0.97
Hang Seng	26540.36	0.34
FTSE	7381.96	-1.36
Commodity	Last Price	(%) Chg
GOLD(\$/ounce)	1572.20	-0.71
Silver (\$/Ounce)	17.83	-0.90
Crude (\$/BBL)	58.30	1.69
Aluminium spot (\$/mt)	1736.25	0.40
Copper SPOT (\$/mt)	5641.75	1.31
Lead Spot (\$/MT)	1844.50	0.89
Natural gas \$/MMBtu	1.82	-0.27
Currency	Last Price	(%) Chg
USD-INR	71.68	0.29
EUR-INR	79.13	0.44
Bond	Last Price	(%) Chg
India 10 Yr Bond yield	6.55	-0.15

52 Wk High (A group)			52 Wk Low (A group)		
Company	Close Price	52 Wk High	Company	Close Price	52 Wk Low
APLL	639	643	ONGC	115	115
BAJFINAN	4362	4485	--	--	--
BERGER	568	579	--	--	--
BERGER	573	574	--	--	--
CGCONSU	266	273	--	--	--

Source: BSE

Market Technical Outlook



Nifty opened higher but was unable to sustain the opening gains and selling pressure intensified as the day progressed which led the indices to close in red. On the daily chart for two consecutive trading session indices closed below the 50-day SMA which suggests that the undertone in the market has turned negative. On the downside Nifty is likely to test 1997 – 11905 – 11861 levels. **At present one needs to adopt cautious approach at current levels.**

News for stocks

WIPRO	Wipro CEO Abidali Neemuchwala has resigned due to family commitments but that he would stay on until a successor was appointed
KOTAKBANK	Bank of India gave in-principle acceptance for promoters voting rights in the Bank to be capped to 20% of paid-up voting equity share capital until March 31 and 15% of paid rose voting equity share capital from April 1, 2020

Foreign Institutional Investments (FII's) Activities

Name of Segment	Net Buyer/seller	Rs In Cr
Index Futures	Net Sell	-1534.23
Stock Futures	Net Buy	175.24
Net Future Position	Net Sell	-1358.99
Index Options	Net Buy	3875.15
Stock Options	Net Buy	113.70
Net Options Position	Net Buy	2629.86
FII In cash Segment	Net Sell	-962.28
DII In cash Segment	Net Buy	292.35
Net Cash Position	Net Sell	669.93

Technical Levels for Nifty 50 Companies

Company	Closing 30-01-2020	Buy/Sell Trigger	Resistance 1	Resistance 2	Support 1	Support 2
ADANI PORTS	378	379.52	382.18	395.62	375.33	372.67
ASIAN PAINT	1805	1799.97	1813.93	1816.78	1791.03	1777.07
AXIS BANK	730.9	731.53	735.77	750.05	726.67	722.43
BAJAJ-AUTO	3145.5	3123.87	3206.63	3122.62	3062.73	2979.97
BAJAJ FINSV	9639.65	9731	9858.65	10104.08	9512	9384.35
BAJ FINANCE	4364.3	4398.05	4451.25	4588.27	4311.1	4257.9
BHARTIARTL	489.8	487.6	495.1	506.45	482.3	474.8
BPCL	469.65	473.1	481.05	491.12	461.7	453.75
BRITANNIA	3210.7	3212.62	3232.78	3272.03	3190.53	3170.37
CIPLA	451	452.78	459.22	470.15	444.57	438.13
COALINDIA	187.95	189.27	191.03	195.68	186.18	184.42
DRREDDY	3154.85	3147.8	3177.05	3252.42	3125.6	3096.35
EICHER MOT	20340.3	20373.43	20546.87	21645.42	20166.87	19993.43
GAIL	123.35	124.37	125.73	130.15	121.98	120.62
GRASIM	791.25	795.83	804.42	831.23	782.67	774.08
HCLTECH	607.85	608.45	613.25	616.82	603.05	598.25
HDFC	2415	2410.2	2433.5	2464.75	2391.7	2368.4
HDFC BANK	1226.05	1227.4	1237.6	1253.12	1215.85	1205.65
HEROMOTOCO	2482.3	2489.43	2514.87	2528.78	2456.87	2431.43
HINDALCO	193.45	194.63	196.57	201.72	191.52	189.58
HINDUNILVR	2058.1	2061.85	2074.25	2097.77	2045.7	2033.3
ICICIBANK	532.2	530.1	536.05	538.4	526.25	520.3
INDUSINDBK	1231.5	1235.68	1249.82	1287.68	1217.37	1203.23
INFRA TEL	246.15	245.62	250.03	252.03	241.73	237.32
INFY	780.7	782.8	787.6	797.47	775.9	771.1
IOC	117.15	117.77	119.33	120.83	115.58	114.02
ITC	234.05	234.68	236.37	241.65	232.37	230.68
JSW STEEL	256.95	258.1	260.95	267.68	254.1	251.25
KOTAK BANK	1628.25	1628.68	1639.87	1659.72	1617.07	1605.88
LT	1370.2	1366.67	1380.33	1387.1	1356.53	1342.87
M&M	567.85	573.08	582.32	585.42	558.62	549.38
MARUTI	7020.45	7016.82	7052.63	7175.1	6984.63	6948.82
NESTLE IND	15520.8	15600.97	15730.68	16195.52	15391.08	15261.37
NTPC	113.65	113.5	114.95	116.43	112.2	110.75
ONGC	115.6	116.05	117.1	119.12	114.55	113.5
POWERGRID	194.4	193.68	195.97	196.37	192.12	189.83
RELIANCE	1443.75	1454.48	1468.97	1509.78	1429.27	1414.78
SBIN	310.7	311.03	316.42	321.38	305.32	299.93
SUN PHARMA	442.1	445.38	450.47	459.4	437.02	431.93
TATAMOTORS	186.2	187.67	191.08	195.52	182.78	179.37
TATA STEEL	448.55	448.13	454.87	463.93	441.82	435.08
TCS	2137.85	2142.62	2160.23	2200.8	2120.23	2102.62
TECHM	791.35	794.43	804.87	815.28	780.92	770.48
TITAN	1179.25	1182.32	1188.43	1218.2	1173.13	1167.02
ULTRACEMCO	4486	4512.88	4561.62	4687.73	4437.27	4388.53
UPL	544.15	544.87	550.63	550.55	538.38	532.62
VEDL	140.95	141.38	142.97	146.67	139.37	137.78
WIPRO	240.7	242.83	245.47	249.95	238.07	235.43
YES BANK	39.05	39.48	40.42	42.87	38.12	37.18
ZEEL	267.85	269.48	272.92	279.82	264.42	260.98

(Source – IRIS)

Guru Call: From the expert's desk

ort

Company	Reco Date	Reco Price (Buy on dips)	High till date	Return%
Aditya Birla Capital	22-Nov-19	95.75	115.35	20.47%
Asian Paints Ltd.	30-Mar-17	1068.1	1862.25	74.35%
Avenue Supermarts Ltd.	31-Jul-17	898.55	2010	123.69%
Axis Bank Ltd.	10-Apr-18	519.3	827.75	59.40%
Bajaj Finance Ltd.	11-Oct-18	2271	4295.75	89.16%
Bajaj Finserv Ltd	1-Nov-16	3416.8	9764.35	185.77%
Bajaj Holdings And Investment Ltd	19-May-16	1499.1	3903.95	160.42%
Bandhan Bank Ltd.	19-Dec-18	556.4	650	16.82%
Bharat Petroleum Corporation Ltd.	23-Oct-19	531.5	549	3.29%
Century Textile and Industries Ltd	25-Nov-16	326	634	94.48%
Cipla Ltd	20-Mar-17	597.3	678.45	13.59%
Colgate Palmolive	16-Sep-19	1314	1642.6	25.01%
Container Corporation	22-Nov-19	577	603	4.51%
Dabur India	22-Oct-19	466	501	7.51%
DLF Ltd	10-Apr-19	194.3	265.9	36.85%
Emami Limited	26-Jun-19	290.35	357.7	23.20%
Godrej Industries Ltd.	12-Feb-18	550.7	657.6	19.41%
Godrej Properties Ltd.	19-Dec-18	685.3	1119.6	63.37%
Grasim Industries Ltd.	31-May-17	1132.5	1331	17.53%
Havells India Ltd.	8-Dec-17	525.75	806.85	53.47%
Housing Development Finance Corp Ltd	19-Dec-17	1720	2499.9	45.34%
HDFC Asset Management Company Ltd.	19-Dec-18	1572.9	3844	144.39%
HDFC Bank Limited	10-Nov-16	639	1305.5	104.30%
HDFC Life Insurance Co Ltd	19-Jan-18	485.05	646.4	33.26%
Hindustan Unilever Ltd.	13-Nov-17	1290.7	2190	69.68%
ICICI Bank Ltd.	6-Apr-18	278.65	552.2	98.17%
ICICI Prudential Life Insurance Company Ltd.	28-Jun-18	375.8	537.3	42.97%
ICICI Lombard General Insurance	19-Sep-19	1154.9	1440.4	24.72%
Infosys Ltd.	17-Aug-17	487.6	847	73.71%
Kansai Nerolac Paints	16-Dec-19	529.85	551	3.99%
Kotak Mahindra Bank Ltd	10-Nov-16	822.1	1734.8	111.02%
Mahindra & Mahindra Ltd.	5-Jun-17	709.25	993	40.01%
Manappuram Finance Ltd.	24-Apr-18	119.2	189	58.56%
Mahanagar Gas	15-Nov-19	1029	1198	16.42%
Marico Ltd.	4-Apr-18	325	404	24.31%
Nestle India Ltd.	27-Sep-18	9729.4	15850	62.91%
Oberoi Realty Ltd.	23-Nov-17	508.6	641.7	26.17%
Phoenix Mills Limited	7-Jul-19	655.15	900	37.37%
Pidilite Industries Limited	4-Oct-16	681.6	1493.5	119.12%
Prestige Estates Projects Limited	6-Jun-19	286.7	426	48.59%
Reliance Nippon	25-Nov-18	377	386.4	2.49%
Rites Ltd.	19-Dec-18	226.96	324.8	43.11%
RBL Bank	22-Nov-19	334	391.2	17.13%
State Bank Of India	28-Aug-18	308	373.8	21.36%
Shipping Corporation	22-Nov-19	64	65.95	3.05%
Tata Chemicals Limited	24-Dec-19	682.8	762	11.60%
Tata Global Beverages Ltd.	29-Jun-17	149.15	399.45	167.82%
Tata Consultancy Services Ltd.	8-Jan-18	1344.6	2296.2	70.77%
Trent Ltd.	19-Dec-18	348.4	611.95	75.65%
Ultratech Cement Ltd.	19-Dec-18	4084.6	4904.95	20.08%
Voltas Ltd.	27-Mar-18	613.9	730.95	19.07%
Whirlpool Of India Ltd.	7-Dec-16	872.25	2510	187.76%
Zee Entertainment	22-Nov-19	345	362	4.93%

NIFTY 50 STOCKS BELOW 200SMA

SCRIP NAME	SMA 200	CLOSING (30-01-2020)
WIPRO	261.77	240.7
ZEEL	323.53	267.85
LT	1397.07	1370.2
ITC	261.46	234.05
SBIN	316.74	310.7
GRASIM	799.76	791.25
CIPLA	499.18	451
M&M	582.76	567.85
HINDALCO	197.19	193.45
HEROMOTOCO	2561.49	2482.3
IOC	139.66	117.15
AXISBANK	732.43	730.9
ONGC	142.38	115.6
TITAN	1181.36	1179.25
VEDL	155.65	140.95
UPL	598.07	544.15
GAIL	139.67	123.35
INDUSINDBK	1448.78	1231.5
ADANIPTS	387.52	378
POWERGRID	196.71	194.4
TCS	2152.51	2137.85
NTPC	124.07	113.65
YESBANK	91.07	39.05
COALINDIA	216.46	187.95
INFRADEL	256.33	246.15

Bulk Deals (BSE)

Deal Date	Scrip Name	Client Name	Deal Type	Quantity	Price
30-Jan-20	GAYAPROJ	AUTHUM INVESTMENT & INFRASTRUCTURE LIMITED	S	2000000	60.00
30-Jan-20	GAYAPROJ	SILVERTOSS SHOPPERS PRIVATE LIMITED	B	4001000	58.42

Bulk Deals (NSE)

Deal Date	Scrip Name	Client Name	Deal Type	Quantity	Price
30-Jan-20	Multi Commodity Exchange	COLLEGE RETIREMENT EQUITY FUND	SELL	332531	1,285.62

Note- Executed on 30th Jan 2020. Bulk Deal Buy/Sell done by fund house is considered.

Weekly Expiry Most Active Nifty Call Option

Symbol	Expiry Date	Strike Price	Highest Open Interest (OI)
NIFTY	06-Feb-20	12300	1369650
NIFTY	06-Feb-20	13000	1353525
NIFTY	06-Feb-20	12200	1150425

Weekly Expiry Most Active Nifty Put Option

Symbol	Expiry Date	Strike Price	Highest Open Interest (OI)
NIFTY	06-Feb-20	12000	1234875
NIFTY	06-Feb-20	11900	773850
NIFTY	06-Feb-20	11700	752850

Securities in Ban For Trade Date 31-01-2020

NIL

Research Analyst Registration No.	Contact	Website	mail Id
INH000002764	SMS: 'Arihant' to 56677	www.arihantcapital.com	arihant.research@arihantcapital.com

**Arihant is Forbes Asia's '200 Best under a \$Billion' Company
'Best Emerging Commodities Broker' awarded by UTV Bloomberg**

Disclaimer: This document has been prepared by Arihant Capital Markets Limited (hereinafter called as Arihant) and its subsidiaries and associated companies. This document does not constitute an offer or solicitation for the purchase and sale of any financial instrument by Arihant. Receipt and review of this document constitutes your agreement not to circulate, redistribute, retransmit or disclose to others the contents, opinions, conclusion, or information contained herein. This document has been prepared and issued on the basis of publicly available information, internally developed data and other sources believed to be reliable. Whilst meticulous care has been taken to ensure that the facts stated are accurate and opinions given are fair and reasonable, neither the analyst nor any employee of our company is in any way is responsible for its contents and nor is its accuracy or completeness guaranteed. This document is prepared for assistance only and is not intended to be and must not alone be taken as the basis for an investment decision. All recipients of this material should before dealing and or transacting in any of the products referred to in this material make their own investigation, seek appropriate professional advice. The investments discussed in this material may not be suitable for all investors. The recipient alone shall be fully responsible/are liable for any decision taken on the basis of this material. Arihant Capital Markets Ltd (including its affiliates) or its officers, directors, personnel and employees, including persons involved in the preparation or issuance of this material may; (a) from time to time, have positions in, and buy or sell or (b) be engaged in any other transaction and earn brokerage or other compensation in the financial instruments/products discussed herein or act as advisor or lender/borrower in respect of such securities/financial instruments/products or have other potential conflict of interest with respect to any recommendation and related information and opinions. The said persons may have acted upon and/or in a manner contradictory with the information contained here and may have a position or be otherwise interested in the investment referred to in this document before its publication. The user of this report assumes the entire risk of any use made of this data/report. Arihant especially states that it has no financial liability, whatsoever, to the users of this report.

Arihant Capital Markets Ltd

#1011 Solitaire Corporate Park Building No.10 1st Floor
 Andheri Ghatkopar Link Road Chakala Andheri (E) Mumbai-400093
 T. 022-42254800. Fax: 022-42254880
www.arihantcapital.com