

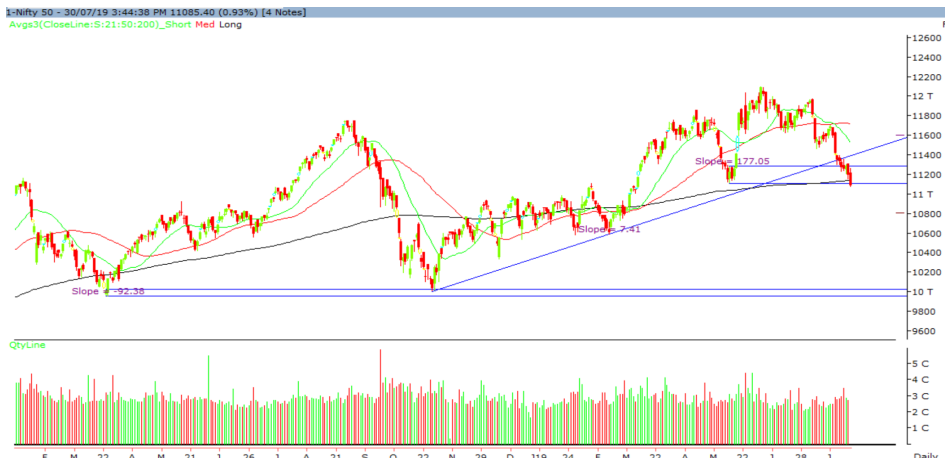
Wednesday, 31<sup>st</sup> July, 2019

Indian Indices	Last Price	(%) Chg
BSE	37397.24	-0.77
NSE	11085.40	-0.93
World Indices	Last Price	(%) Chg
Dow Jones	27198.02	-0.09
Nasdaq	8273.61	-0.24
Nikkei	21497.99	-0.97
Hang Seng	27803.26	-1.21
FTSE	7646.77	-0.52
Commodity	Last Price	(%) Chg
GOLD(\$/ounce)	1428.80	-0.06
Silver (\$/Ounce)	16.51	-0.29
Crude (\$/BBL)	65.23	0.79
Aluminium spot (\$/mt)	1814.25	0.65
Copper SPOT (\$/mt)	5958.50	0.34
Lead Spot (\$/MT)	1999.75	0.00
Natural gas \$/MMBtu	2.14	0.00
Currency	Last Price	(%) Chg
USD-INR	69.05	0.12
EUR-INR	77.15	0.31
Bond	Last Price	(%) Chg
India 10 Yr Bond yield	6.38	-0.36

52 Wk High (A group)			52 Wk Low (A group)		
Company	Close Price	52 Wk High	Company	Close Price	52 Wk Low
--	--	--	APOLLOT	149.6	149
--	--	--	BHARATFO	417	414
--	--	--	ESCORTS	461	457
--	--	--	HINDZIN	214	213
--	--	--	MARUTI	5507	5490

Source: BSE

### Market Technical Outlook



Nifty opened higher but were unable to sustain higher levels which led the indices to close in red. On the daily chart, we are observing that prices breached the demand zone and have closed below the 200-day SMA (11143). This suggests weakness going forward.

**Outlook:** In coming trading session if Nifty opens higher in the range of 11131 to 11200 keep a stop loss of 11305 for a target of 10964 – 10890 - 10837 levels.

### News for stocks under our Fundamental coverage

<b>BANDHAN BANK</b>	Equity shareholders approved the amalgamation of Gruh Finance with the bank
<b>MARUTI SUZUKI</b>	The company stated that Ertiga (Petrol) has now become BS-VI compliant with effect from July 30. The company said that all variants of Ertiga (Petrol) will see a price increase. Revised price of the afore mentioned car to vary from Rs 7.54 lakh to Rs 10.05 lakh

### Foreign Institutional Investments (FII's) Activities

Name of Segment	Net Buyer/seller	Rs In Cr
Index Futures	Net Buy	939.21
Stock Futures	Net Buy	1198.77
<b>Net Future Position</b>	Net Buy	<b>2137.98</b>
Index Options	Net Buy	545.86
Stock Options	Net Buy	5.90
<b>Net Options Position</b>	Net Buy	<b>551.76</b>
FII In cash Segment	Net Sell	-644.59
DII In cash Segment	Net Buy	1079.72
<b>Net Cash Position</b>	<b>Net Buy</b>	<b>435.13</b>

**Technical Levels for Nifty 50 Companies**

Company	Closing 30-07-2019	Buy/Sell Trigger	Resistance 1	Resistance 2	Support 1	Support 2
ADANIPTS	373	375	379	384	370	366
ASIANPAINT	1509	1513	1523	1537	1499	1489
AXISBANK	708	712	723	739	696	685
BAJAJ-AUTO	2464	2475	2504	2544	2435	2405
BAJAJFINSV	7078	7131	7205	7332	7003	6929
BAJFINANCE	3250	3260	3289	3328	3221	3192
BHARTIARTL	346	343	351	356	338	330
BPCL	336	338	341	347	332	329
CIPLA	2617	2636	2679	2740	2574	2531
COALINDIA	520	524	530	540	514	508
DRREDDY	200	201	205	210	196	193
EICHERMOT	2560	2601	2653	2745	2508	2456
GAIL	16164	16299	16589	17015	15874	15584
GRASIM	129	130	132	134	128	126
HCLTECH	763	779	800	838	741	720
HDFC	1024	1021	1030	1037	1014	1004
HDFCBANK	2127	2133	2153	2178	2108	2088
HEROMOTOCO	2252	2254	2269	2286	2238	2223
HINDALCO	2259	2310	2374	2489	2195	2130
HINDPETRO	190	191	194	197	188	185
HINDUNILVR	1720	1720	1735	1749	1705	1690
IBULHSGFIN	524	540	564	604	500	476
ICICIBANK	425	429	435	445	419	413
INDUSINDBK	1337	1368	1417	1497	1287	1238
INFRADEL	250	251	258	266	243	237
INFY	793	793	797	802	788	784
IOC	134	135	137	141	131	129
ITC	269	269	270	272	267	265
JSWSTEEL	230	233	246	261	218	205
KOTAKBANK	1499	1497	1511	1523	1485	1472
LT	1376	1381	1389	1401	1368	1360
M&M	549	553	558	566	544	539
MARUTI	5507	5548	5604	5701	5451	5395
NTPC	127	127	129	130	126	125
ONGC	139	140	141	143	137	136
POWERGRID	208	208	210	211	207	205
RELIANCE	1181	1192	1209	1236	1165	1148
SBIN	328	333	341	354	320	313
SUNPHARMA	410	419	433	455	396	383
TATAMOTORS	133	135	138	142	131	128
TATASTEEL	415	421	436	457	400	385
TCS	2179	2162	2203	2226	2138	2097
TECHM	640	641	649	658	632	624
TITAN	1079	1082	1091	1103	1070	1060
ULTRACEMCO	4318	4342	4383	4448	4277	4236
UPL	574	579	588	603	564	554
VEDL	151	153	156	162	147	144
WIPRO	262	263	264	267	261	259
YESBANK	86	88	95	103	79	73
ZEEL	381	384	389	398	376	371

(Source – IRIS)

**Guru Call: From the expert's desk**

Company	Reco Date	Reco Price (Buy on dips)	High till date	Return%
Asian Paints Ltd.	30-Mar-17	1068.1	1529	43.15%
Avenue Supermarts Ltd.	31-Jul-17	898.55	1699	89.08%
Axis Bank Ltd.	10-Apr-18	519.3	827.75	59.40%
Bajaj Finance Ltd.	11-Oct-18	2271	3693.25	62.63%
Bajaj Finserv Ltd	1-Nov-16	3416.8	8557.85	150.46%
Bajaj Holdings And Investment Ltd	19-May-16	1499.1	3800	153.49%
Bandhan Bank Ltd.	19-Dec-18	556.4	636	14.31%
Century Textile and Industries Ltd	25-Nov-16	739.3	1471	98.97%
Cipla Ltd	20-Mar-17	597.3	678.5	13.59%
DLF Ltd	10-Apr-18	194.3	202.65	4.30%
Emami Limited	26-Jun-19	290.35	326	12.28%
Godrej Industries Ltd.	12-Feb-18	550.7	657.6	19.41%
Godrej Properties Ltd.	19-Dec-18	685.3	1014.8	48.08%
Grasim Industries Ltd.	31-May-17	1132.5	1331	17.53%
Havells India Ltd.	8-Dec-17	525.75	806.85	53.47%
Housing Development Finance Corp Ltd	19-Dec-17	1720	2235	29.94%
HDFC Asset Management Company Ltd.	19-Dec-18	1572.9	2070	31.60%
HDFC Bank Limited	10-Nov-16	1251.3	2494.5	99.35%
HDFC Life Insurance Co Ltd	19-Jan-18	485.05	548.3	13.04%
Hindustan Unilever Ltd.	13-Nov-17	1290.7	1870	44.88%
ICICI Bank Ltd.	6-Apr-18	278.65	443.9	59.30%
ICICI Prudential Life Insurance Company Ltd.	28-Jun-18	375.8	428	13.89%
Infosys Ltd.	17-Aug-17	487.6	773	58.53%
Kotak Mahindra Bank Ltd	10-Nov-16	822.1	1555	89.15%
Mahindra & Mahindra Ltd.	5-Jun-17	709.25	993	40.01%
Manappuram Finance Ltd.	24-Apr-18	119.2	144.95	21.60%
Marico Ltd.	4-Apr-18	325	396.6	22.03%
Nestle India Ltd.	27-Sep-18	9729.4	11950	22.82%
Oberoi Realty Ltd.	23-Nov-17	508.6	621.7	22.24%
Phoenix Mills Limited	7-July-19	655.15	660	0.07%
Pidilite Industries Limited	4-Oct-16	681.6	1313	92.63%
Prestige Estates Projects Limited	6-Jun-18	286.7	283.5	-1.12%
Rites Ltd.	19-Dec-18	283.7	301.4	6.24%
State Bank Of India	28-Aug-18	308	365	18.51%
Tata Global Beverages Ltd.	29-Jun-17	149.15	328.8	120.45%
Tata Consultancy Services Ltd.	8-Jan-18	1344.6	2292	70.46%
Trent Ltd.	19-Dec-18	348.4	449.05	28.89%
Ultratech Cement Ltd.	19-Dec-18	4084.6	4904	20.06%
Voltas Ltd.	27-Mar-18	613.9	658.4	7.25%
Whirlpool Of India Ltd.	7-Dec-16	872.25	1955	124.13%

**NIFTY 50 STOCKS BELOW 200SMA**

SCRIP NAME	SMA 200	CLOSING (30-07-2019)
WIPRO	265.56	262.30
RELIANCE	1231.08	1180.90
ZEEL	414.59	381.10
LT	1384.02	1376.35
ITC	284.00	268.90
HCLTECH	1034.66	1023.60
HINDUNILVR	1735.68	1719.90
TATASTEEL	509.10	415.05
DRREDDY	2644.08	2560.00
GRASIM	840.94	762.55
TATAMOTORS	177.49	133.45
CIPLA	545.33	520.00
M&M	686.49	548.75
HINDALCO	208.56	190.10
BPCL	350.81	335.50
HEROMOTOCO	2756.82	2258.80
SUNPHARMA	452.96	410.35
BRITANNIA	2951.53	2617.05
IOC	145.29	133.50
ONGC	154.35	138.75
VEDL	181.87	150.60
GAIL	167.83	129.15
EICHERMOT	20972.42	16163.55
INDUSINDBK	1549.20	1337.30
TECHM	739.55	640.25
JSWSTEEL	293.24	230.25
NTPC	127.48	127.20
MARUTI	6930.70	5507.15
YESBANK	184.22	86.05
BAJAJ-AUTO	2801.70	2463.85
COALINDIA	243.63	199.55
INFRADEL	279.18	249.55
IBULHSGFIN	737.77	523.90

**Securities in Ban For Trade Date 31-07-2019**

NIL.

**Bulk Deals (BSE)**

N/A.

**Bulk Deals (NSE)**

Deal Date	Scrip Name	Client Name	Deal Type	Quantity	Price
30-Jul-19	JUBILANT LIFE SCIENCE LTD	RARE ENTERPRISES	BUY	2013626	436.23
30-Jul-19	JUBILANT LIFE SCIENCE LTD	EAST BRIDGE CAPITAL MASTER FUND LIMITED	BUY	1250000	435.00
30-Jul-19	JUBILANT LIFE SCIENCE LTD	RARE ENTERPRISES	SELL	263626	435.75
30-Jul-19	Spentex Industries Ltd	CITIGROUP VENTURE CAPITAL INTERNATIONAL GROWTH PARTNERSHIP MAURITIUS LTD	SELL	2018570	0.36

 Note- Executed on 30<sup>th</sup> July 2019. Bulk Deal Buy/Sell done by fund house is considered.

## Research Analyst Registration No.

INH000002764

## Contact

SMS: 'Arihant' to 56677

## Website

[www.arihantcapital.com](http://www.arihantcapital.com)

## mail Id

[research@arihantcapital.com](mailto:research@arihantcapital.com)

**Arihant is Forbes Asia's '200 Best under a \$Billion' Company  
'Best Emerging Commodities Broker' awarded by UTV Bloomberg**

**Disclaimer:** This document has been prepared by Arihant Capital Markets Limited (hereinafter called as Arihant) and its subsidiaries and associated companies. This document does not constitute an offer or solicitation for the purchase and sale of any financial instrument by Arihant. Receipt and review of this document constitutes your agreement not to circulate, redistribute, retransmit or disclose to others the contents, opinions, conclusion, or information contained herein. This document has been prepared and issued on the basis of publicly available information, internally developed data and other sources believed to be reliable. Whilst meticulous care has been taken to ensure that the facts stated are accurate and opinions given are fair and reasonable, neither the analyst nor any employee of our company is in any way is responsible for its contents and nor is its accuracy or completeness guaranteed. This document is prepared for assistance only and is not intended to be and must not alone be taken as the basis for an investment decision. All recipients of this material should before dealing and or transacting in any of the products referred to in this material make their own investigation, seek appropriate professional advice. The investments discussed in this material may not be suitable for all investors. The recipient alone shall be fully responsible/are liable for any decision taken on the basis of this material. Arihant Capital Markets Ltd (including its affiliates) or its officers, directors, personnel and employees, including persons involved in the preparation or issuance of this material may; (a) from time to time, have positions in, and buy or sell or (b) be engaged in any other transaction and earn brokerage or other compensation in the financial instruments/products discussed herein or act as advisor or lender/borrower in respect of such securities/financial instruments/products or have other potential conflict of interest with respect to any recommendation and related information and opinions. The said persons may have acted upon and/or in a manner contradictory with the information contained here and may have a position or be otherwise interested in the investment referred to in this document before its publication. The user of this report assumes the entire risk of any use made of this data/report. Arihant especially states that it has no financial liability, whatsoever, to the users of this report.

## Arihant Capital Markets Ltd

#1011 Solitaire Corporate Park Building No.10 1<sup>st</sup> Floor  
Andheri Ghatkopar Link Road Chakala Andheri (E) Mumbai-400093  
T. 022-42254800. Fax: 022-42254880  
[www.arihantcapital.com](http://www.arihantcapital.com)