

To join our research group on TELEGRAM, please click on the links - <https://bit.ly/2Rt4NyS> and <https://bit.ly/3ciqvDn>

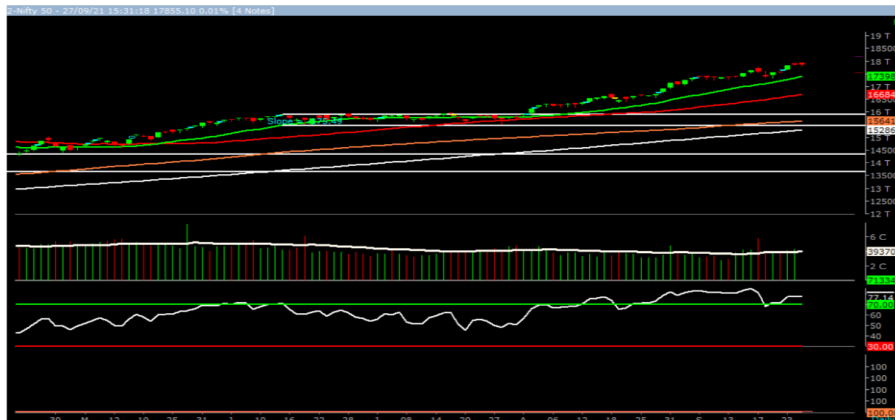
Wednesday, 29th Sep 2021

Indian Indices	Last Price	(%) Chg
NSE	17734.15	-0.68
BSE	59587.62	-0.82
World Indices	Last Price	(%) Chg
Dow Jones	34299.99	-1.63
Nasdaq	14546.68	-2.83
Nikkei	29442.14	-2.46
Hang Seng	24333.57	-0.68
FTSE	7028.10	-0.50
Commodity	Last Price	(%) Chg
GOLD(\$/ounce)	1741.10	0.21
Silver (\$/Ounce)	22.56	0.41
Crude (\$/BBL)	77.24	-1.42
Aluminium spot (\$/mt)	2910.00	-0.77
Copper SPOT (\$/mt)	9260.00	0.03
Lead Spot (\$/MT)	2171.25	0.44
Natural gas \$/MMBtu	5.85	-0.53
Currency	Last Price	(%) Chg
USD-INR	74.10	-0.07
EUR-INR	86.61	-0.05
Bond		
India 10 Yr Bond yield	6.22	0.31

52 Wk High (A group)			52 Wk Low (A group)		
Company	Close Price	52 Wk High	Company	Close Price	52 Wk Low
BHRTELEC	210	212	--	--	--
CGPOWER	113	113	--	--	--
COALIND	174	176	--	--	--
DELTCORP	257	260	--	--	--
FINOLEX	208	209	--	--	--

Source: BSE

Market Technical Outlook



Nifty opened higher but was unable to sustain the opening gains and momentum on the downside intensified as the day progressed. However, in the final hour of the trade witness some recover from day's low to close in red. On the daily chart we are observing that prices came close to 21-daySMA (17448) by making a low of 17576. At present, 17448 is immediate support for the prices. In coming trading session if Nifty for first hour trades above 17810 level then it may test 17900 – 18000 levels. On the downside, 17650 - 17550 levels.

We still continue to maintain our stance that stock specific activity is likely to continue.

Foreign Institutional Investments (FII's) Activities

Name of Segment	Net Buyer/seller	Rs In Cr
Index Futures	Net Sell	-2205.36
Stock Futures	Net Sell	-2340.54
Net Future Position	Net Sell	-4545.90
Index Options	Net Buy	9082.24
Stock Options	Net Sell	-679.59
Net Options Position	Net Buy	8402.65
FII In cash Segment	Net Sell	-1957.70
DII In cash Segment	Net Buy	161.45
Net Cash Position	Net Sell	-1796.25

Guru Call: From the expert's desk

Company	Reco Date	Reco Price (Buy on dips)	High till date	Return%
Accelya Solutions India Ltd	10-Jun-21	1203.90	1539.40	27.87%
Aditya Birla Capital Ltd	13-Aug-21	206.60	210.95	2.11%
Aditya Birla Fashion and Retail Ltd	08-Feb-21	164.40	231.65	40.91%
Alkem	08-Jul-20	2427.00	3558.90	46.64%
Apcotex Industries Limited	13-Aug-21	342.90	350.05	2.09%
Asian Paints Ltd.	30-Mar-17	1068.10	3179.50	197.68%
Astec LifeSciences Limited	09-Jul-21	1360.70	1487.00	9.28%
Avenue Supermarts Ltd.	31-Jul-17	898.55	3448.95	283.84%
Axis Bank Ltd.	10-Apr-18	519.30	827.75	59.40%
Bajaj Finserv Ltd	1-Nov-16	3416.80	13110.00	283.69%
Bajaj Holdings And Investment Ltd	19-May-16	1499.10	4060.00	170.83%
Birla Corporation Limited	28-Jun-21	1240.00	1450.80	17.00%
Britannia	12-June-20	3366.00	4010.00	19.13%
Cadila	03-Apr-20	274.00	673.70	145.88%
CAMS	08-Oct-20	1334.90	3740.65	180.22%
CDSL	17-Sep-20	485.90	1579.00	224.96%
Century Textile and Industries Ltd	25-Nov-16	750.40	1471.20	96.06%
CESC Ltd	08-Jun-21	758.20	870.90	14.86%
CG Power and Industrial Solutions Ltd	10-Feb-21	45.25	91.95	103.20%
Chola finance	25-Sep-20	238.70	600.95	151.76%
Chola Holding	23-Sep-20	391.80	711.00	81.47%
Cipla Ltd	20-Mar-17	597.30	997.00	66.92%
Colgate Palmolive	16-Sep-19	1314.00	1794.85	36.59%
Dabur India	22-Oct-19	466.00	605.00	29.83%
DFM Foods Ltd	03-Feb-21	409.05	453.80	10.94%
DLF Ltd	10-Apr-19	194.30	338.80	74.37%
Dr Reddy	04-Aug-20	4530.00	5614.60	23.94%
Emami Limited	26-Jun-19	290.35	578.50	99.24%
Finolex Cables Ltd	08-Feb-21	368.80	557.70	51.22%
Firstsource Solutions Ltd	13-Aug-21	201.10	209.35	4.10%
Fortis	14-Jul-20	127.00	253.90	99.92%
Gati Ltd	13-Aug-21	148.90	154.20	3.56%
Gillette India Limited	11-Jun-21	5847.00	6249.00	6.88%
Glaxosmithkline Pharmaceuticals Ltd	27-Aug-20	1455.75	1807.50	24.16%
Godrej Consumer Products Limited	16-Jun-20	634.00	980.70	54.68%
HDFC Asset Management Company Ltd.	19-Dec-18	1572.90	3844.00	144.39%
HDFC Bank Limited	10-Nov-16	639.00	1641.00	156.81%
HDFC Life Insurance Co Ltd	19-Jan-18	485.05	746.00	53.80%
Hero Motocorp Ltd	29-Sep-20	3174.95	3629.05	14.30%
Hindustan Unilever Ltd.	13-Nov-17	1290.70	2614.30	102.55%
Housing Development Finance Corp Ltd	19-Dec-17	1720.00	2896.00	68.37%
ICICI Bank Ltd.	06-Apr-18	278.65	679.40	143.82%
ICICI Lombard General Insurance	19-Sep-19	1154.90	1626.45	40.83%
ICICI Prudential Life Insurance Company Ltd.	28-Jun-18	375.80	660.20	75.68%
ICICI Securities Ltd	24-Sep-20	466.65	802.00	71.86%
Indusindbnk	08-Jun-20	451.00	1119.50	148.23%
Infosys Ltd.	17-Aug-17	487.60	1596.85	227.49%
INOX Leisure Ltd	13-Aug-21	327.80	332.70	1.49%
Ion Exchange (India) Ltd	01-June-21	1464.95	2947.00	101.17%
Jubilant Ingrevia Ltd	22-Jul-21	623.00	640.00	2.73%
Kotak Mahindra Bank Ltd	10-Nov-16	822.10	2049.00	149.24%
L&T Finance Holdings Ltd	03-Dec-20	84.05	113.40	34.92%

Guru Call: From the expert's desk

Company	Reco Date	Reco Price (Buy on dips)	High till date	Return%
LIC Housing Finance Limited	06-Jan-21	408.30	542.45	32.86%
Mahanagar Gas	15-Nov-19	1029.00	1284.40	24.82%
Mahindra & Mahindra Ltd.	05-Jun-17	709.25	993.00	40.01%
Marico Ltd.	04-Apr-18	325.00	549.60	69.11%
Maruti Suzuki India Ltd	13-Aug-20	5988.85	8329.00	39.08%
Nestle India Ltd.	27-Sep-18	9729.40	18844.00	93.68%
NRB Bearings Limited	18-Jun-21	134.30	154.40	14.97%
Oberoi Realty Ltd.	23-Nov-17	508.60	729.00	43.33%
Oracle Financial Services Software Ltd.	13-Aug-21	4618.45	4789.00	3.69%
PEL	02-Sep-20	1246.25	2520.90	102.28%
Phoenix Mills Limited	07-Jul-19	655.15	979.00	49.43%
Pidilite Industries Limited	04-Oct-16	681.60	2333.95	242.42%
Poonawalla Fincorp Ltd	13-Aug-21	175.45	197.85	12.77%
Procter & Gamble Hygiene & Health Care	13-Aug-21	12869.65	13004.95	1.05%
PVR Limited	13-Aug-21	1412.25	1445.00	2.32%
Raymond	25-Sep-20	263.55	473.90	79.81%
RBL Bank	25-Sep-20	164.95	274.30	66.29%
Reliance	22-Apr-20	1351.00	2369.35	75.38%
Rites Ltd.	19-Dec-18	226.96	331.00	45.84%
SBI Card	16-Jul-20	719.00	1139.50	58.48%
SBI Life	20-May-20	715.00	1064.95	48.94%
Shilpa Medicare Ltd	20-Jul-21	661.75	668.90	1.08%
Shree Renuka Sugars Limited	13-Aug-21	26.80	28.10	4.85%
Solar Industries India Ltd	13-Aug-21	1760.05	1775.00	0.85%
State Bank of India	03-Feb-21	335.95	441.95	31.55%
Sun Pharma	07-Aug-20	525.00	721.85	37.50%
Sun TV Network Ltd.	13-Aug-21	525.35	538.00	2.41%
Syngene International Ltd	24-Sep-20	565.70	700.00	23.74%
Tata Chemicals Limited	24-Dec-19	296.89	833.95	180.90%
Tata Coffee Ltd.	28-Jun-21	183.35	198.65	8.34%
Tata Consultancy Services Ltd.	08-Jan-18	1344.60	3399.65	152.84%
Tata Consumer	29-Jun-17	149.15	786.85	427.56%
Trent Ltd.	19-Dec-18	348.40	947.95	172.09%
Ultratech Cement Ltd.	19-Dec-18	4084.60	7544.00	84.69%
UTI Asset Management Company Ltd	13-Aug-21	1043.75	1147.00	9.89%
Vedanta Ltd	28-Jun-21	260.80	276.15	5.89%
Voltas Ltd.	27-Mar-18	613.90	1132.00	84.39%
Whirlpool Of India Ltd.	07-Dec-16	872.25	2787.00	219.52%
Wipro Limited	13-Aug-21	615.50	639.20	3.85%
Zee Entertainment	22-Nov-19	345.00	362.00	4.93%
Zensar Technologies Limited	13-Aug-21	417.90	461.50	10.43
--	--	--	--	--
--	--	--	--	--
--	--	--	--	--
--	--	--	--	--
--	--	--	--	--
--	--	--	--	--
--	--	--	--	--
--	--	--	--	--
--	--	--	--	--
--	--	--	--	--
--	--	--	--	--
--	--	--	--	--
--	--	--	--	--
--	--	--	--	--
--	--	--	--	--
--	--	--	--	--
--	--	--	--	--
--	--	--	--	--
--	--	--	--	--
--	--	--	--	--

NIFTY 50 STOCKS BELOW 200SMA

SCRIP NAME	SMA 200	CLOSING (28-09-2021)
DRREDDY	4965.98	4833.15
BPCL	438.71	429.6
HEROMOTOCO	3017.02	2920.55
--	--	--
--	--	--
--	--	--
--	--	--
--	--	--
--	--	--
--	--	--
--	--	--

Weekly Expiry Most Active Nifty Call Option

Symbol	Expiry Date	Strike Price	Highest Open Interest (Contracts)
NIFTY	30-Sep-2021	18000	1,66,882
NIFTY	30-Sep-2021	17900	1,33,677
NIFTY	30-Sep-2021	18500	1,23,472

Weekly Expiry Most Active Nifty Put Option

Symbol	Expiry Date	Strike Price	Highest Open Interest (Contracts)
NIFTY	30-Sep-2021	17000	1,02,860
NIFTY	30-Sep-2021	17500	89,550
NIFTY	30-Sep-2021	17600	70,905

Securities in Ban For Trade Date 29-09-2021

IDEA, SAIL, SUNTV, ZEEL

Bulk Deals (NSE)

Deal Date	Scrip Name	Client Name	Deal Type	Quantity	Price
28-Sep-21	AWHCL	TATA AIG GENERAL INSURANCE CO LTD	BUY	275000	361.68
28-Sep-21	AWHCL	AUTHUM INVESTMENT & INFRASTRUCTURE LIMITED	BUY	500000	367.75
28-Sep-21	DUDIGITAL	AVIATOR GLOBAL INVESTMENT FUND	BUY	50000	104.62
28-Sep-21	MCLEODRUSS	KAVITA KHAITAN	BUY	4000391	31.11
28-Sep-21	AWHCL	CAMBRIDGE (MAURITIUS) LIMITED	SELL	1379604	358.20
28-Sep-21	AWHCL	GUILDFORD (MAURITIUS) LIMITED	SELL	3070746	353.21
28-Sep-21	BHAGERIA	BODAL CHEMICALS LTD	SELL	250000	259.35
28-Sep-21	MCLEODRUSS	INDUSIND BANK LTD CLIENT A/C	SELL	5000000	31.15
28-Sep-21	WEBELSOLAR	ANTARA INDIA EVERGREEN FUND LTD	SELL	388140	68.40
28-Sep-21	WEBELSOLAR	INDIA MAX INVESTMENT FUND	SELL	659946	67.76

Bulk Deals (BSE)

Deal Date	Scrip Name	Client Name	Deal Type	Quantity	Price
28-Sep-21	AWHCL	CAMBRIDGE (MAURITIUS) LIMITED	S	243460	360.10
28-Sep-21	AWHCL	GUILDFORD (MAURITIUS) LIMITED	S	541897	357.33
28-Sep-21	INOXWIND	INOX LEASING AND FINANCE LIMITED	B	4450000	102.50
28-Sep-21	INOXWIND	SIDDHAPAVAN TRADING LLP	S	4450000	102.50
28-Sep-21	STOVEKRAFT	GOLDMAN SACHS ASSET MGT L P A/C G S TRUST-	B	957763	943.35
28-Sep-21	STOVEKRAFT	GOLDMAN SACHS ASSET MGT L P A/C G S TRUST-	S	957,763	943.35
28-Sep-21	WEBELSOLAR	INDIA MAX INVESTMENT FUND	S	378,092	67.80

Note- Executed on 28th Sep 2021. Bulk Deal Buy/Sell done by fund house is considered

Research Analyst Registration No.

INH000002764

Contact

SMS: 'Arihant' to 56677

Website

www.arihantcapital.com

mail Id

arihant.research@arihantcapital.com

**Arihant is Forbes Asia's '200 Best under a \$Billion' Company
'Best Emerging Commodities Broker' awarded by UTV Bloomberg**

Disclaimer: This document has been prepared by Arihant Capital Markets Limited (hereinafter called as Arihant) and its subsidiaries and associated companies. This document does not constitute an offer or solicitation for the purchase and sale of any financial instrument by Arihant. Receipt and review of this document constitutes your agreement not to circulate, redistribute, retransmit or disclose to others the contents, opinions, conclusion, or information contained herein. This document has been prepared and issued on the basis of publicly available information, internally developed data and other sources believed to be reliable. Whilst meticulous care has been taken to ensure that the facts stated are accurate and opinions given are fair and reasonable, neither the analyst nor any employee of our company is in any way is responsible for its contents and nor is its accuracy or completeness guaranteed. This document is prepared for assistance only and is not intended to be and must not alone be taken as the basis for an investment decision. All recipients of this material should before dealing and or transacting in any of the products referred to in this material make their own investigation, seek appropriate professional advice. The investments discussed in this material may not be suitable for all investors. The recipient alone shall be fully responsible/are liable for any decision taken on the basis of this material. Arihant Capital Markets Ltd (including its affiliates) or its officers, directors, personnel and employees, including persons involved in the preparation or issuance of this material may; (a) from time to time, have positions in, and buy or sell or (b) be engaged in any other transaction and earn brokerage or other compensation in the financial instruments/products discussed herein or act as advisor or lender/borrower in respect of such securities/financial instruments/products or have other potential conflict of interest with respect to any recommendation and related information and opinions. The said persons may have acted upon and/or in a manner contradictory with the information contained here and may have a position or be otherwise interested in the investment referred to in this document before its publication. The user of this report assumes the entire risk of any use made of this data/report. Arihant especially states that it has no financial liability, whatsoever, to the users of this report.

Arihant Capital Markets Ltd

#1011 Solitaire Corporate Park Building No.10 1st Floor
 Andheri Ghatkopar Link Road Chakala Andheri (E) Mumbai-400093
 T. 022-42254800. Fax: 022-42254880
www.arihantcapital.com