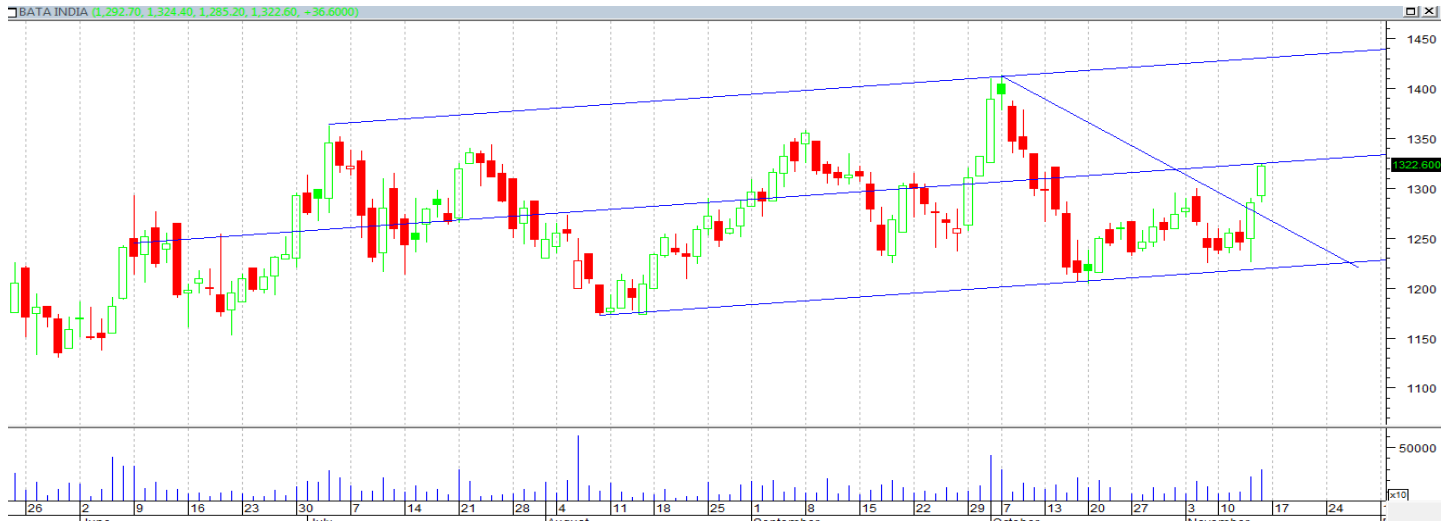




BUY: Bata India CMP: 1313.65

Target: 1400-1430-1474

Stop Loss: 1220



On the daily chart,

- The stock has bounced from the lower trendline of the channel.
- At present prices have given a strong breakout from a downward sloping trendline.
- Any move above the median line of the channel would propel the momentum on the upside.

One can buy the stock at current price or on a decline up to 1285 level with a stop loss of 1220 for a target of 1400 – 1430 – 1474 levels.

Disclaimer: This document has been prepared by Arihant Capital Markets Limited (hereinafter called as Arihant) and its subsidiaries and associated companies. This document does not constitute an offer or solicitation for the purchase and sale of any financial instrument by Arihant. Receipt and review of this document constitutes your agreement not to circulate, redistribute, retransmit or disclose to others the contents, opinions, conclusion, or information contained herein. This document has been prepared and issued on the basis of publicly available information, internally developed data and other sources believed to be reliable. Whilst meticulous care has been taken to ensure that the facts stated are accurate and opinions given are fair and reasonable, neither the analyst nor any employee of our company is in any way is responsible for its contents and nor is its accuracy or completeness guaranteed. This document is prepared for assistance only and is not intended to be and must not alone be taken as the basis for an investment decision. All recipients of this material should before dealing and or transacting in any of the products referred to in this material make their own investigation, seek appropriate professional advice. The investments discussed in this material may not be suitable for all investors. The recipient alone shall be fully responsible/are liable for any decision taken on the basis of this material. Arihant Capital Markets Ltd (including its affiliates) or its officers, directors, personnel and employees, including persons involved in the preparation or issuance of this material may; (a) from time to time, have positions in, and buy or sell or (b) be engaged in any other transaction and earn brokerage or other compensation in the financial instruments/products discussed herein or act as advisor or lender/borrower in respect of such securities/financial instruments/products or have other potential conflict of interest with respect to any recommendation and related information and opinions. The said persons may have acted upon and/or in a manner contradictory with the information contained here and may have a position or be otherwise interested in the investment referred to in this document before its publication. The user of this report assumes the entire risk of any use made of this data / Report. Arihant especially states that it has no financial liability, whatsoever, to the users of this Report.

Arihant Capital Markets Ltd.

#1011, Solitaire Corporate Park, Building No.10, 1st Floor,
Andheri Ghatkopar Link Road, Chakala, Andheri (E), Mumbai-400093

www.arihantcapital.com