

To join our research group on TELEGRAM, please click on the links - <https://bit.ly/3JTeFcc> and <https://bit.ly/3TNulgc>

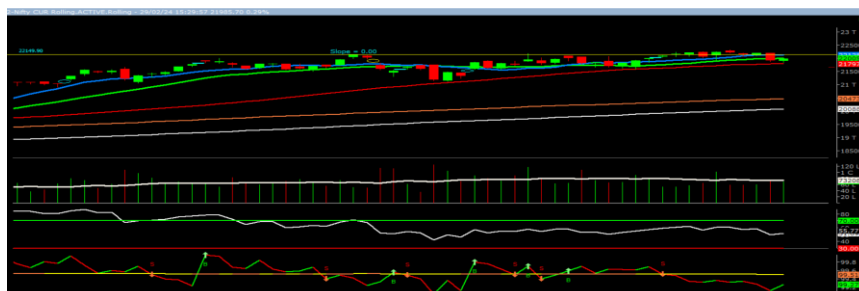
Friday, 01st Mar 2024

Indian Indices	Last Price	(%) Chg
NSE	21982.80	0.14
BSE	72500.30	0.27
World Indices	Last Price	(%) Chg
Dow Jones	38996.39	0.12
Nasdaq	16091.92	0.90
Nikkei	39896.50	1.81
Hang Seng	16569.00	1.08
FTSE	7630.02	0.07
Commodity	Last Price	(%) Chg
GOLD(\$/ounce)	2054.45	-0.01
Silver (\$/Ounce)	22.93	0.23
Crude (\$/BBL)	78.53	0.35
Aluminium spot (\$/mt)	2222.00	-0.09
Copper SPOT (\$/mt)	8493.00	0.11
Zinc (\$/MT)	2427.50	0.19
Natural gas \$/MMBtu	1.84	-0.27
Currency	Last Price	(%) Chg
USDINR	82.91	0.02
EURINR	89.83	0.01
Bond		
India 10 Yr Bond yield	7.07	0.17

52 Wk High (A group)			52 Wk Low (A group)		
Company	Close Price	52 Wk High	Company	Close Price	52 Wk Low
BAJAJHLDNG	9310	9354	ATUL	6220	6005
GET_D	919	919	PAGEIND	34304	34000
GODFRYPHLP	2959	3001	--	--	--
INDUSTOWER	252	255	--	--	--
INTELLECT	1109	1120	--	--	--

Source: BSE

Market Technical Outlook



Nifty opened lower but witness upside momentum in the final hour of the trading session to close in green. At present, prices have closed marginally below the 20-days SMA (22005) and formed a narrow range body formation. This suggests indecisiveness prevailing at current level. In coming trading session if nifty trades above 22030 then it may test 22100 – 22190 levels. On the downside, 21870 - 21770 levels may act as support for the day.

Broadly, we are of the opinion that 21700 on daily closing basis is a make or break level. Hence, one needs to adopt cautiously positive approach at current level.

Foreign Institutional Investments (FII's) Activities

Name of Segment	Net Buyer/seller	Rs In Cr
Index Futures	Net Seller	-896.04
Stock Futures	Net Seller	-4181.14
Net Future Position	Net Seller	-5077.18
Index Options	Net Seller	-334.71
Stock Options	Net Seller	-2465.93
Net Options Position	Net Seller	-2800.64
FII In cash Segment	Net Buyer	3568.11
DII In cash Segment	Net Seller	-230.21
Net Cash Position	Net Buyer	3337.9

Guru Call: From the expert's desk

Company	Reco Date	Reco Price (Buy on dips)	High till date	Return%
Adani Power	20-Apr-22	235	345	46.6%
Adani Wilmar Ltd	20-Apr-22	668	878	31.5%
Aditya Birla Capital Ltd	13-Aug-21	124	139	12.5%
Aditya Birla Fashion and Retail Ltd	8-Feb-21	164	322	95.9%
Apcotex Industries Limited	13-Aug-21	343	679	98.0%
Asian Paints Ltd.	30-Mar-17	1068	3590	236.1%
Avenue Supermarts Ltd.	31-Jul-17	899	5900	556.6%
Axis Bank Ltd.	10-Apr-18	519	867	67.0%
Bajaj Finance Ltd	20-Apr-22	7033	7295	3.7%
Bajaj Finserv Ltd	1-Nov-16	3417	19325	465.6%
Bajaj Holdings And Investment Ltd	19-May-16	1499	6598	340.1%
CDSL	17-Sep-20	486	1734	256.9%
Chola finance	25-Sep-20	239	770	222.6%
Chola Holding	23-Sep-20	392	763	94.7%
Cipla Ltd	20-Mar-17	597	1083	81.3%
Colgate Palmolive	16-Sep-19	1314	1823	38.7%
D. P. Abhushan Ltd	20-Apr-22	396	495	25.0%
Dabur India	22-Oct-19	466	659	41.4%
DLF Ltd	10-Apr-19	194	450	131.6%
Dr Reddy	4-Aug-20	4530	5615	24.0%
Emami Limited	26-Jun-19	290	622	114.2%
Finolex Cables Ltd	8-Feb-21	130	268	106.2%
Fortis	14-Jul-20	127	314	147.2%
Godawari Power	20-Apr-22	455	482	6.0%
Godrej Consumer Products Limited	16-Jun-20	634	1138	79.5%
HDFC Asset Management Company Ltd.	19-Dec-18	1573	3844	144.4%
HDFC Bank Limited	10-Nov-16	639	1725	170.0%
HDFC Life Insurance Co Ltd	19-Jan-18	485	776	60.0%
Heritage Foods Ltd	20-Apr-22	330	354	7.2%
Hero Motocorp Ltd	29-Sep-20	3175	3629	14.3%
Hindustan Unilever Ltd.	13-Nov-17	1291	2859	121.5%
Housing Development Finance Corp Ltd	19-Dec-17	1720	3365	95.6%
ICICI Bank Ltd.	6-Apr-18	279	867	211.1%
ICICI Lombard General Insurance	19-Sep-19	1155	1675	45.0%
ICICI Prudential Life Insurance Company Ltd.	28-Jun-18	376	724	92.7%
ICICI Securities Ltd	24-Sep-20	467	896	92.0%
Indusindbnk	8-Jun-20	451	1242	175.4%
Infosys Ltd.	17-Aug-17	488	1954	300.7%
Kotak Mahindra Bank Ltd	10-Nov-16	822	2253	174.1%
Linde India	20-Apr-22	3499	3649	4.3%
Marico Ltd.	4-Apr-18	325	608	87.1%
Maruti Suzuki India Ltd	13-Aug-20	5989	9050	51.1%
Oberoi Realty Ltd.	23-Nov-17	509	1052	106.8%
PEL	2-Sep-20	1246	3015	141.9%
Phoenix Mills Limited	7-Jul-19	655	1200	83.2%
Poonawalla Fincorp Ltd	13-Aug-21	175	344	96.1%
Procter & Gamble Hygiene & Health Care	13-Aug-21	12870	16466	27.9%
Raymond	25-Sep-20	264	1280	385.7%
Reliance	22-Apr-20	1351	2856	111.4%
SBI Life	20-May-20	715	1293	80.8%
Shree Renuka Sugars Limited	13-Aug-21	27	63	135.1%
Spectrum Electrical	18-Apr-22	98	103	5.0%

Weekly Expiry Most Active Nifty Call Option

Symbol	Expiry Date	Strike Price	Highest Open Interest (Contracts)
NIFTY	07-Mar-2024	23,000	85,661
NIFTY	07-Mar-2024	22,000	73,318
NIFTY	07-Mar-2024	22,200	67,650

Weekly Expiry Most Active Nifty Put Option

Symbol	Expiry Date	Strike Price	Highest Open Interest (Contracts)
NIFTY	07-Mar-2024	21,000	88,963
NIFTY	07-Mar-2024	22,000	70,384
NIFTY	07-Mar-2024	21,800	60,305

Securities in Ban For Trade Date: 01-03-2024

Nil

Bulk Deals (BSE)

Deal Date	Scrip Name	Client Name	Deal Type	Quantity	Price
29-Feb-24	DISHTV	EAST BRIDGE CAPITAL MASTER FUND I LTD	B	28446351	21.05
29-Feb-24	DISHTV	BNP PARIBAS ARBITRAGE	S	28446351	21.05
29-Feb-24	PEL	BNP PARIBAS ARBITRAGE	S	1983000	898.5
29-Feb-24	PEL	EAST BRIDGE CAPITAL MASTER FUND I LTD	B	1983000	898.5
29-Feb-24	UDS	BNP PARIBAS ARBITRAGE	S	1666700	341.95
29-Feb-24	UDS	EAST BRIDGE CAPITAL MASTER FUND I LTD	B	1666700	341.95

Bulk Deals (NSE)

Deal Date	Scrip Name	Client Name	Deal Type	Quantity	Price
29-Feb-24	ADFFOODS	RELIANCE COMMERCIAL FINANCE LIMITED	BUY	690485	190
29-Feb-24	KOTYARK	JITENDRA BALDWA	BUY	95000	1295.27
29-Feb-24	LUMAXTECH	NIPPON INDIA MUTUAL FUND	BUY	2500000	450.5
29-Feb-24	PNB	BNP PARIBAS ARBITRAGE	BUY	59387	121.42
29-Feb-24	BHEL	BNP PARIBAS ARBITRAGE	SELL	35020250	227.27
29-Feb-24	GMRINFRA	BNP PARIBAS ARBITRAGE	SELL	81495842	83.91
29-Feb-24	GPTHEALTH	NOMURA SINGAPORE LIMITED	SELL	453693	202.46
29-Feb-24	KLL	NEOMILE GROWTH FUND - SERIES I	SELL	116800	87.51
29-Feb-24	LUMAXTECH	ALBULA INVESTMENT FUND LTD	SELL	3000000	450.52
29-Feb-24	NMDC	BNP PARIBAS ARBITRAGE	SELL	33236062	225.68
29-Feb-24	PNB	BNP PARIBAS ARBITRAGE	SELL	73862981	121.65
29-Feb-24	UNIONBANK	BNP PARIBAS ARBITRAGE	SELL	52165641	145.95

 Note- Executed on 29th Feb 2024. Bulk Deal Buy/Sell done by fund house is considered.

Research Analyst Registration No.	Contact	Website	mail Id
INH000002764	SMS: 'Arihant' to 56677	www.arihantcapital.com	arihant.research@arihantcapital.com

**Arihant is Forbes Asia's '200 Best under a \$Billion' Company
'Best Emerging Commodities Broker' awarded by UTV Bloomberg**

Disclaimer: This document has been prepared by Arihant Capital Markets Limited (hereinafter called as Arihant) and its subsidiaries and associated companies. This document does not constitute an offer or solicitation for the purchase and sale of any financial instrument by Arihant. Receipt and review of this document constitutes your agreement not to circulate, redistribute, retransmit or disclose to others the contents, opinions, conclusion, or information contained herein. This document has been prepared and issued on the basis of publicly available information, internally developed data and other sources believed to be reliable. Whilst meticulous care has been taken to ensure that the facts stated are accurate and opinions given are fair and reasonable, neither the analyst nor any employee of our company is in any way is responsible for its contents and nor is its accuracy or completeness guaranteed. This document is prepared for assistance only and is not intended to be and must not alone be taken as the basis for an investment decision. All recipients of this material should before dealing and or transacting in any of the products referred to in this material make their own investigation, seek appropriate professional advice. The investments discussed in this material may not be suitable for all investors. The recipient alone shall be fully responsible/are liable for any decision taken on the basis of this material. Arihant Capital Markets Ltd (including its affiliates) or its officers, directors, personnel and employees, including persons involved in the preparation or issuance of this material may; (a) from time to time, have positions in, and buy or sell or (b) be engaged in any other transaction and earn brokerage or other compensation in the financial instruments/products discussed herein or act as advisor or lender/borrower in respect of such securities/financial instruments/products or have other potential conflict of interest with respect to any recommendation and related information and opinions. The said persons may have acted upon and/or in a manner contradictory with the information contained here and may have a position or be otherwise interested in the investment referred to in this document before its publication. The user of this report assumes the entire risk of any use made of this data/report. Arihant especially states that it has no financial liability, whatsoever, to the users of this report.

Arihant Capital Markets Ltd
 #1011 Solitaire Corporate Park Building No.10 1st Floor
 Andheri Ghatkopar Link Road Chakala Andheri (E) Mumbai-400093
 T. 022-42254800. Fax: 022-42254880
www.arihantcapital.com