

To join our research group on TELEGRAM, please click on the links - <https://bit.ly/3JTeFcc> and <https://bit.ly/3TNulgc>

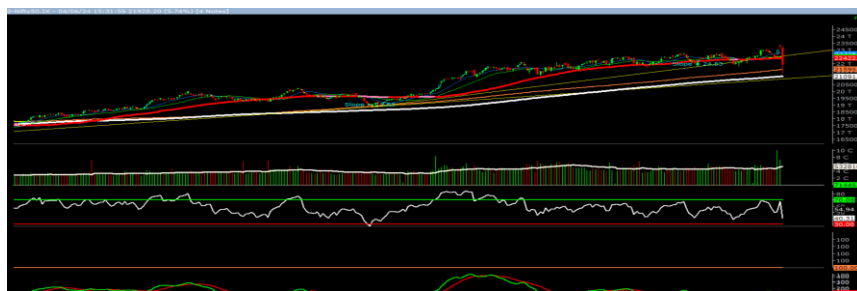
Wednesday, 05<sup>th</sup> Jun 2024

Indian Indices	Last Price	(%) Chg
NSE	21884.50	-5.93
BSE	72079.05	-5.74
World Indices	Last Price	(%) Chg
Dow Jones	38711.29	0.36
Nasdaq	16853.74	0.15
Nikkei	38479.50	-0.84
Hang Seng	18405.00	0.31
FTSE	8232.04	-0.37
Commodity	Last Price	(%) Chg
GOLD(\$/ounce)	2355.35	0.34
Silver (\$/Ounce)	29.81	0.67
Crude (\$/BBL)	73.25	0.01
Aluminium spot (\$/mt)	2656.00	-0.38
Copper SPOT (\$/mt)	9967.50	0.33
Zinc (\$/MT)	2930.50	0.02
Natural gas \$/MMBtu	2.64	1.11
Currency	Last Price	(%) Chg
USDINR	83.52	0.53
EURINR	90.85	0.31
Bond		
India 10 Yr Bond yield	7.03	1.24

52 Wk High			52 Wk Low		
Company	Close Price	52 Wk High	Company	Close Price	52 Wk Low
ABB	7700	8818	ANURAS	738	726
BRITANNIA	1581	1688	ATUL	5499	5183
CONCOR	947	1194	BATA	1332	1269
CANBK	110	129	BAJAJFINSV	1471	1419
DIXON	8863	9970	EPL	176	171

Source: Money Control (BSE 500)

### Market Technical Outlook



Nifty opened lower, and momentum on the downside intensified as the day progressed which led nifty to close deep in red. On the daily chart, we are observing a strong bear candle, which came close to the 200-days SMA (21091) by making a low of 21281. In coming trading session if nifty trades above 21980 then it may test 22050 - 22140 levels. On the downside, 21810 - 21730 levels may act as support for the day.

Since, we have seen sharp fall, which has close well below 50-days SMA (22422). One needs to adopt cautious approach at current level.

### Foreign Institutional Investments (FII's) Activities

Name of Segment	Net Buyer/seller	Rs In Cr
Index Futures	Net Seller	-9843.44
Stock Futures	Net Buyer	224.61
<b>Net Future Position</b>	<b>Net Seller</b>	<b>-9618.83</b>
Index Options	Net Seller	-11325.33
Stock Options	Net Seller	-1388.02
<b>Net Options Position</b>	<b>Net Seller</b>	<b>-12713.35</b>
FII In cash Segment	Net Seller	-12436.22
DII In cash Segment	Net Seller	-3318.98
<b>Net Cash Position</b>	<b>Net Seller</b>	<b>-15755.20</b>

**Guru Call: From the expert's desk**

Company	Reco Date	Reco Price (Buy on dips)	High till date	Return%
Adani Power	20-Apr-22	235	345	46.6%
Adani Wilmar Ltd	20-Apr-22	668	878	31.5%
Aditya Birla Capital Ltd	13-Aug-21	124	139	12.5%
Aditya Birla Fashion and Retail Ltd	8-Feb-21	164	322	95.9%
Apcotex Industries Limited	13-Aug-21	343	679	98.0%
Asian Paints Ltd.	30-Mar-17	1068	3590	236.1%
Avenue Supermarts Ltd.	31-Jul-17	899	5900	556.6%
Axis Bank Ltd.	10-Apr-18	519	867	67.0%
Bajaj Finance Ltd	20-Apr-22	7033	7295	3.7%
Bajaj Finserv Ltd	1-Nov-16	3417	19325	465.6%
Bajaj Holdings And Investment Ltd	19-May-16	1499	6598	340.1%
CDSL	17-Sep-20	486	1734	256.9%
Chola finance	25-Sep-20	239	770	222.6%
Chola Holding	23-Sep-20	392	763	94.7%
Cipla Ltd	20-Mar-17	597	1083	81.3%
Colgate Palmolive	16-Sep-19	1314	1823	38.7%
D. P. Abhushan Ltd	20-Apr-22	396	495	25.0%
Dabur India	22-Oct-19	466	659	41.4%
DLF Ltd	10-Apr-19	194	450	131.6%
Dr Reddy	4-Aug-20	4530	5615	24.0%
Emami Limited	26-Jun-19	290	622	114.2%
Finolex Cables Ltd	8-Feb-21	130	268	106.2%
Fortis	14-Jul-20	127	314	147.2%
Godawari Power	20-Apr-22	455	482	6.0%
Godrej Consumer Products Limited	16-Jun-20	634	1138	79.5%
HDFC Asset Management Company Ltd.	19-Dec-18	1573	3844	144.4%
HDFC Bank Limited	10-Nov-16	639	1725	170.0%
HDFC Life Insurance Co Ltd	19-Jan-18	485	776	60.0%
Heritage Foods Ltd	20-Apr-22	330	354	7.2%
Hero Motocorp Ltd	29-Sep-20	3175	3629	14.3%
Hindustan Unilever Ltd.	13-Nov-17	1291	2859	121.5%
Housing Development Finance Corp Ltd	19-Dec-17	1720	3365	95.6%
ICICI Bank Ltd.	6-Apr-18	279	867	211.1%
ICICI Lombard General Insurance	19-Sep-19	1155	1675	45.0%
ICICI Prudential Life Insurance Company Ltd.	28-Jun-18	376	724	92.7%
ICICI Securities Ltd	24-Sep-20	467	896	92.0%
Indusindbnk	8-Jun-20	451	1242	175.4%
Infosys Ltd.	17-Aug-17	488	1954	300.7%
Kotak Mahindra Bank Ltd	10-Nov-16	822	2253	174.1%
Linde India	20-Apr-22	3499	3649	4.3%
Marico Ltd.	4-Apr-18	325	608	87.1%
Maruti Suzuki India Ltd	13-Aug-20	5989	9050	51.1%
Oberoi Realty Ltd.	23-Nov-17	509	1052	106.8%
PEL	2-Sep-20	1246	3015	141.9%
Phoenix Mills Limited	7-Jul-19	655	1200	83.2%
Poonawalla Fincorp Ltd	13-Aug-21	175	344	96.1%
Procter & Gamble Hygiene & Health Care	13-Aug-21	12870	16466	27.9%
Raymond	25-Sep-20	264	1280	385.7%
Reliance	22-Apr-20	1351	2856	111.4%
SBI Life	20-May-20	715	1293	80.8%
Shree Renuka Sugars Limited	13-Aug-21	27	63	135.1%
Spectrum Electrical	18-Apr-22	98	103	5.0%



**Weekly Expiry Most Active Nifty Call Option**

Symbol	Expiry Date	Strike Price	Highest Open Interest (Contracts)
NIFTY	06-Jun-2024	24,700	5,41,396
NIFTY	06-Jun-2024	24,000	5,06,089
NIFTY	06-Jun-2024	23,000	3,84,227

**Weekly Expiry Most Active Nifty Put Option**

Symbol	Expiry Date	Strike Price	Highest Open Interest (Contracts)
NIFTY	06-Jun-2024	20,200	3,69,863
NIFTY	06-Jun-2024	21,000	2,95,781
NIFTY	06-Jun-2024	20,500	2,20,258

**Securities in Ban For Trade Date: 05-06-2024**

ZEEL

**Bulk Deals (BSE)**

N.A

**Bulk Deals (NSE)**

Deal Date	Scrip Name	Client Name	Deal Type	Quantity	Price
4-Jun-24	HGS	HINDUJA GROUP LIMITED	BUY	1160000	804
4-Jun-24	MCX	WF ASIAN SMALLER COMPANIES FUND LIMITED	BUY	497455	3212.43
4-Jun-24	NCC	SMALL CAP WORLD FUND INC	SELL	5402312	265.13

Note- Executed on 04<sup>th</sup> Jun 2024. Bulk Deal Buy/Sell done by fund house is considered.

Research Analyst Registration No.	Contact	Website	mail Id
INH000002764	SMS: 'Arihant' to 56677	<a href="http://www.arihantcapital.com">www.arihantcapital.com</a>	<a href="mailto:arihant.research@arihantcapital.com">arihant.research@arihantcapital.com</a>

**Arihant is Forbes Asia's '200 Best under a \$Billion' Company  
'Best Emerging Commodities Broker' awarded by UTV Bloomberg**

**Disclaimer:** This document has been prepared by Arihant Capital Markets Limited (hereinafter called as Arihant) and its subsidiaries and associated companies. This document does not constitute an offer or solicitation for the purchase and sale of any financial instrument by Arihant. Receipt and review of this document constitutes your agreement not to circulate, redistribute, retransmit or disclose to others the contents, opinions, conclusion, or information contained herein. This document has been prepared and issued on the basis of publicly available information, internally developed data and other sources believed to be reliable. Whilst meticulous care has been taken to ensure that the facts stated are accurate and opinions given are fair and reasonable, neither the analyst nor any employee of our company is in any way is responsible for its contents and nor is its accuracy or completeness guaranteed. This document is prepared for assistance only and is not intended to be and must not alone be taken as the basis for an investment decision. All recipients of this material should before dealing and or transacting in any of the products referred to in this material make their own investigation, seek appropriate professional advice. The investments discussed in this material may not be suitable for all investors. The recipient alone shall be fully responsible/are liable for any decision taken on the basis of this material. Arihant Capital Markets Ltd (including its affiliates) or its officers, directors, personnel and employees, including persons involved in the preparation or issuance of this material may; (a) from time to time, have positions in, and buy or sell or (b) be engaged in any other transaction and earn brokerage or other compensation in the financial instruments/products discussed herein or act as advisor or lender/borrower in respect of such securities/financial instruments/products or have other potential conflict of interest with respect to any recommendation and related information and opinions. The said persons may have acted upon and/or in a manner contradictory with the information contained here and may have a position or be otherwise interested in the investment referred to in this document before its publication. The user of this report assumes the entire risk of any use made of this data/report. Arihant especially states that it has no financial liability, whatsoever, to the users of this report.

**Arihant Capital Markets Ltd**

#1011 Solitaire Corporate Park Building No.10 1<sup>st</sup> Floor  
 Andheri Ghatkopar Link Road Chakala Andheri (E) Mumbai-400093  
 T. 022-42254800. Fax: 022-42254880  
[www.arihantcapital.com](http://www.arihantcapital.com)