

To join our research group on TELEGRAM, please click on the links - <https://bit.ly/3JTeFcc> and <https://bit.ly/3TNulgc>

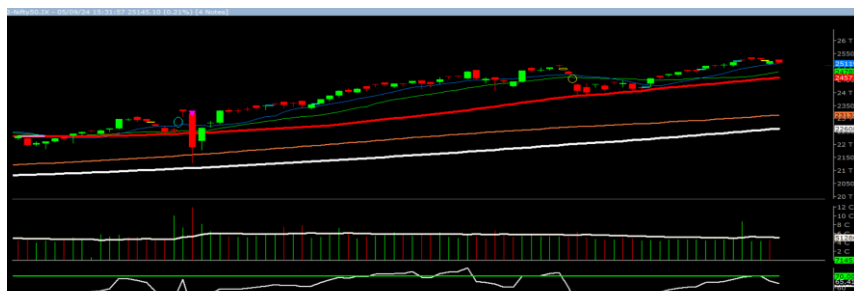
Friday, 06<sup>th</sup> Sep 2024

Indian Indices	Last Price	(%) Chg
NSE	25145.10	-0.21
BSE	82201.16	-0.18
World Indices	Last Price	(%) Chg
Dow Jones	40755.75	-0.54
Nasdaq	17127.66	0.25
Nikkei	36578.91	-0.21
Hang Seng	17444.30	-0.07
FTSE	8241.71	-0.34
Commodity	Last Price	(%) Chg
GOLD(\$/ounce)	2547.65	0.18
Silver (\$/Ounce)	29.11	0.05
Crude (\$/BBL)	69.16	0.01
Aluminium spot (\$/mt)	2379.00	-0.08
Copper SPOT (\$/mt)	9091.50	-0.14
Zinc (\$/MT)	2722.00	-0.40
Natural gas \$/MMBtu	2.25	-0.31
Currency	Last Price	(%) Chg
USDINR	83.95	-0.05
EURINR	93.32	0.01
Bond		
India 10 Yr Bond yield	6.96	1.60

52 Wk High			52 Wk Low		
Company	Close Price	52 Wk High	Company	Close Price	52 Wk Low
ALKEM	6265	6343	--	--	--
BIOCON	382	394	--	--	--
COLPAL	3648	3685	--	--	--
HINDPETRO	448	457	--	--	--
LUPIN	2280	2312	--	--	--

Source: Money Control (BSE 500)

### Market Technical Outlook



The Nifty opened higher but was unable to sustain the opening gains and selling in the latter half of the session dragged nifty to close in red. On the daily chart, we are observing prices, tested the 10-days SMA (25119) by making a low of 25127 and has closed above it. However, have managed to close well above it. In coming trading sessions, if Nifty trades above 25180 level then it may test 25265 – 25335 levels. On the downside, 25050 – 24940 levels may act as support for the day.

**Broadly, looking at the current price action it is evident that the 10-days SMA (25127) remains crucial support for the prices. Hence, one needs to adopt a cautiously positive approach at the current level, as stock-specific activity is likely to continue.**

### Foreign Institutional Investments (FII's) Activities

Name of Segment	Net Buyer/seller	Rs In Cr
Index Futures	Net Seller	-670.19
Stock Futures	Net Seller	-4200.55
<b>Net Future Position</b>	<b>Net Seller</b>	<b>-4870.74</b>
Index Options	Net Seller	-58671.10
Stock Options	Net Seller	-2698.12
<b>Net Options Position</b>	<b>Net Seller</b>	<b>-61369.22</b>
FII In cash Segment	Net Seller	-688.69
DII In cash Segment	Net Buyer	2970.74
<b>Net Cash Position</b>	<b>Net Buyer</b>	<b>2282.05</b>

**Guru Call: From the expert's desk**

Company	Reco Date	Reco Price (Buy on dips)	High till date	Return%
Adani Power	20-Apr-22	235	345	46.6%
Adani Wilmar Ltd	20-Apr-22	668	878	31.5%
Aditya Birla Capital Ltd	13-Aug-21	124	139	12.5%
Aditya Birla Fashion and Retail Ltd	8-Feb-21	164	322	95.9%
Apcotex Industries Limited	13-Aug-21	343	679	98.0%
Asian Paints Ltd.	30-Mar-17	1068	3590	236.1%
Avenue Supermarts Ltd.	31-Jul-17	899	5900	556.6%
Axis Bank Ltd.	10-Apr-18	519	867	67.0%
Bajaj Finance Ltd	20-Apr-22	7033	7295	3.7%
Bajaj Finserv Ltd	1-Nov-16	3417	19325	465.6%
Bajaj Holdings And Investment Ltd	19-May-16	1499	6598	340.1%
CDSL	17-Sep-20	486	1734	256.9%
Chola finance	25-Sep-20	239	770	222.6%
Chola Holding	23-Sep-20	392	763	94.7%
Cipla Ltd	20-Mar-17	597	1083	81.3%
Colgate Palmolive	16-Sep-19	1314	1823	38.7%
D. P. Abhushan Ltd	20-Apr-22	396	495	25.0%
Dabur India	22-Oct-19	466	659	41.4%
DLF Ltd	10-Apr-19	194	450	131.6%
Dr Reddy	4-Aug-20	4530	5615	24.0%
Emami Limited	26-Jun-19	290	622	114.2%
Finolex Cables Ltd	8-Feb-21	130	268	106.2%
Fortis	14-Jul-20	127	314	147.2%
Godawari Power	20-Apr-22	455	482	6.0%
Godrej Consumer Products Limited	16-Jun-20	634	1138	79.5%
HDFC Asset Management Company Ltd.	19-Dec-18	1573	3844	144.4%
HDFC Bank Limited	10-Nov-16	639	1725	170.0%
HDFC Life Insurance Co Ltd	19-Jan-18	485	776	60.0%
Heritage Foods Ltd	20-Apr-22	330	354	7.2%
Hero Motocorp Ltd	29-Sep-20	3175	3629	14.3%
Hindustan Unilever Ltd.	13-Nov-17	1291	2859	121.5%
Housing Development Finance Corp Ltd	19-Dec-17	1720	3365	95.6%
ICICI Bank Ltd.	6-Apr-18	279	867	211.1%
ICICI Lombard General Insurance	19-Sep-19	1155	1675	45.0%
ICICI Prudential Life Insurance Company Ltd.	28-Jun-18	376	724	92.7%
ICICI Securities Ltd	24-Sep-20	467	896	92.0%
Indusindbnk	8-Jun-20	451	1242	175.4%
Infosys Ltd.	17-Aug-17	488	1954	300.7%
Kotak Mahindra Bank Ltd	10-Nov-16	822	2253	174.1%
Linde India	20-Apr-22	3499	3649	4.3%
Marico Ltd.	4-Apr-18	325	608	87.1%
Maruti Suzuki India Ltd	13-Aug-20	5989	9050	51.1%
Oberoi Realty Ltd.	23-Nov-17	509	1052	106.8%
PEL	2-Sep-20	1246	3015	141.9%
Phoenix Mills Limited	7-Jul-19	655	1200	83.2%
Poonawalla Fincorp Ltd	13-Aug-21	175	344	96.1%
Procter & Gamble Hygiene & Health Care	13-Aug-21	12870	16466	27.9%
Raymond	25-Sep-20	264	1280	385.7%
Reliance	22-Apr-20	1351	2856	111.4%
SBI Life	20-May-20	715	1293	80.8%
Shree Renuka Sugars Limited	13-Aug-21	27	63	135.1%
Spectrum Electrical	18-Apr-22	98	103	5.0%



**Weekly Expiry Most Active Nifty Call Option**

Symbol	Expiry Date	Strike Price	Highest Open Interest (Contracts)
NIFTY	12-Sep-2024	26,000	2,72,038
NIFTY	12-Sep-2024	25,200	1,49,437
NIFTY	12-Sep-2024	25,500	1,37,312

**Weekly Expiry Most Active Nifty Put Option**

Symbol	Expiry Date	Strike Price	Highest Open Interest (Contracts)
NIFTY	12-Sep-2024	25,000	1,58,585
NIFTY	12-Sep-2024	24,000	1,57,159
NIFTY	12-Sep-2024	24,500	1,43,293

**Securities in Ban For Trade Date: 06-09-2024**

ABFRL, BALRAMCHIN, BANDHANBNK, BIOCON, CHAMBLFERT, HINDCOPPER, RBLBANK

**Bulk Deals (BSE)**

Deal Date	Scrip Name	Client Name	Deal Type	Quantity	Price
5-Sep-24	FORBESCO	INDIA DISCOVERY FUND LIMITED	SELL	131,434	631.09
5-Sep-24	GOKAKTEX	INDIA DISCOVERY FUND LIMITED	SELL	200,610	199.00
5-Sep-24	GOKAKTEX	BRIDGE INDIA FUND	BUY	200,610	199.00
5-Sep-24	SEIL	LEGENDS GLOBAL OPPORTUNITIES (SINGAPORE) PTE. LTD.	BUY	3277714	119.16
5-Sep-24	SEIL	LGOF GLOBAL OPPORTUNITIES LIMITED	SELL	2277714	118.85
5-Sep-24	SEIL	NEW LEAINA INVESTMENTS LIMITED	SELL	1800000	119.32
5-Sep-24	TOTEM	ANTARA INDIA EVERGREEN FUND LTD	BUY	580000	340.5
5-Sep-24	TOTEM	INDIA DISCOVERY FUND LIMITED	SELL	837000	340.88

**Bulk Deals (NSE)**

Deal Date	Scrip Name	Client Name	Deal Type	Quantity	Price
5-Sep-24	DUGLOBAL	LEGENDS GLOBAL OPPORTUNITIES (SINGAPORE) PTE. LTD.	BUY	1550000	71.9
5-Sep-24	ECOSMOBLTY	PLUTUS WEALTH MANAGEMENT LLP	BUY	429425	473.1
5-Sep-24	MFSL	MAX VENTURES INVESTMENT HOLDINGS PRIVATE LIMITED	SELL	11000000	1107.37
5-Sep-24	RTNINDIA	LGOF GLOBAL OPPORTUNITIES LTD	SELL	11792853	81.94

Note- Executed on 05<sup>th</sup> Sep 2024. Bulk Deal Buy/Sell done by fund house is considered.

**Research Analyst Registration No.**

INH000002764

**Contact**

SMS: 'Arihant' to 56677

**Website**[www.arihantcapital.com](http://www.arihantcapital.com)**mail Id**[arihant.research@arihantcapital.com](mailto:arihant.research@arihantcapital.com)**Arihant is Forbes Asia's '200 Best under a \$Billion' Company  
'Best Emerging Commodities Broker' awarded by UTV Bloomberg**

**Disclaimer:** This document has been prepared by Arihant Capital Markets Limited (hereinafter called as Arihant) and its subsidiaries and associated companies. This document does not constitute an offer or solicitation for the purchase and sale of any financial instrument by Arihant. Receipt and review of this document constitutes your agreement not to circulate, redistribute, retransmit or disclose to others the contents, opinions, conclusion, or information contained herein. This document has been prepared and issued on the basis of publicly available information, internally developed data and other sources believed to be reliable. Whilst meticulous care has been taken to ensure that the facts stated are accurate and opinions given are fair and reasonable, neither the analyst nor any employee of our company is in any way is responsible for its contents and nor is its accuracy or completeness guaranteed. This document is prepared for assistance only and is not intended to be and must not alone be taken as the basis for an investment decision. All recipients of this material should before dealing and or transacting in any of the products referred to in this material make their own investigation, seek appropriate professional advice. The investments discussed in this material may not be suitable for all investors. The recipient alone shall be fully responsible/are liable for any decision taken on the basis of this material. Arihant Capital Markets Ltd (including its affiliates) or its officers, directors, personnel and employees, including persons involved in the preparation or issuance of this material may; (a) from time to time, have positions in, and buy or sell or (b) be engaged in any other transaction and earn brokerage or other compensation in the financial instruments/products discussed herein or act as advisor or lender/borrower in respect of such securities/financial instruments/products or have other potential conflict of interest with respect to any recommendation and related information and opinions. The said persons may have acted upon and/or in a manner contradictory with the information contained here and may have a position or be otherwise interested in the investment referred to in this document before its publication. The user of this report assumes the entire risk of any use made of this data/report. Arihant especially states that it has no financial liability, whatsoever, to the users of this report.

**Arihant Capital Markets Ltd**

#1011 Solitaire Corporate Park Building No.10 1<sup>st</sup> Floor  
Andheri Ghatkopar Link Road Chakala Andheri (E) Mumbai-400093  
T. 022-42254800. Fax: 022-42254880  
[www.arihantcapital.com](http://www.arihantcapital.com)