

To join our research group on TELEGRAM, please click on the links - <https://bit.ly/3JTeFcc> and <https://bit.ly/3TNulgc>

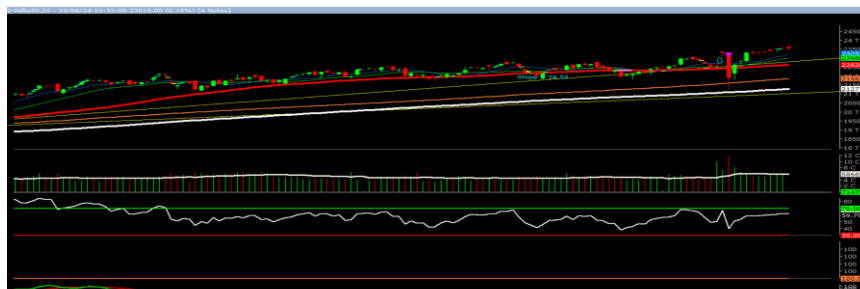
Thursday, 20<sup>th</sup> Jun 2024

Indian Indices	Last Price	(%) Chg
NSE	23516.00	-0.18
BSE	77337.59	0.05
World Indices	Last Price	(%) Chg
Dow Jones	--	--
Nasdaq	--	--
Nikkei	38374.50	-0.42
Hang Seng	18345.00	-0.26
FTSE	8205.11	0.17
Commodity	Last Price	(%) Chg
GOLD(\$/ounce)	2347.40	0.20
Silver (\$/Ounce)	30.20	1.26
Crude (\$/BBL)	80.55	-0.11
Aluminium spot (\$/mt)	2501.00	0.36
Copper SPOT (\$/mt)	9810.50	0.24
Zinc (\$/MT)	2865.00	0.03
Natural gas \$/MMBtu	2.93	0.62
Currency	Last Price	(%) Chg
USDINR	83.44	0.13
EURINR	89.70	0.25
Bond		
India 10 Yr Bond yield	6.97	-0.09

52 Wk High			52 Wk Low		
Company	Close Price	52 Wk High	Company	Close Price	52 Wk Low
AXISBANK	1226	1243	--	--	--
DMART	4935	5220	--	--	--
CIPLA	1559	1582	--	--	--
EIXDEIND	560	567	--	--	--
HAL	5313	5585	--	--	--

Source: Money Control (BSE 500)

### Market Technical Outlook



Nifty opened higher, made a new all-time high of 23664 from where selling emerge which led nifty to close in red. On the daily chart, we are observing seven consecutive narrow range body formation, which suggests that markets are circumspect at higher level. In coming trading session if nifty trades above 23570 level then it may test 23600 - 23690 levels. On the downside, 23400 - 23290 levels may act as support for the day.

At present, looking at the current price action, it is evident that a consolidation or minor pull back of prior uptrend could be possible. Hence, one can adopt cautiously positive approach at current level, as stock specific activity is likely to continue.

### Foreign Institutional Investments (FII's) Activities

Name of Segment	Net Buyer/seller	Rs In Cr
Index Futures	Net Buyer	4356.46
Stock Futures	Net Buyer	942.74
<b>Net Future Position</b>	<b>Net Buyer</b>	<b>5299.20</b>
Index Options	Net Seller	-7951.18
Stock Options	Net Buyer	105.55
<b>Net Options Position</b>	<b>Net Seller</b>	<b>-7845.63</b>
FII In cash Segment	Net Buyer	7908.36
DII In cash Segment	Net Buyer	7107.80
<b>Net Cash Position</b>	<b>Net Buyer</b>	<b>15016.16</b>

**Guru Call: From the expert's desk**

Company	Reco Date	Reco Price (Buy on dips)	High till date	Return%
Adani Power	20-Apr-22	235	345	46.6%
Adani Wilmar Ltd	20-Apr-22	668	878	31.5%
Aditya Birla Capital Ltd	13-Aug-21	124	139	12.5%
Aditya Birla Fashion and Retail Ltd	8-Feb-21	164	322	95.9%
Apcotex Industries Limited	13-Aug-21	343	679	98.0%
Asian Paints Ltd.	30-Mar-17	1068	3590	236.1%
Avenue Supermarts Ltd.	31-Jul-17	899	5900	556.6%
Axis Bank Ltd.	10-Apr-18	519	867	67.0%
Bajaj Finance Ltd	20-Apr-22	7033	7295	3.7%
Bajaj Finserv Ltd	1-Nov-16	3417	19325	465.6%
Bajaj Holdings And Investment Ltd	19-May-16	1499	6598	340.1%
CDSL	17-Sep-20	486	1734	256.9%
Chola finance	25-Sep-20	239	770	222.6%
Chola Holding	23-Sep-20	392	763	94.7%
Cipla Ltd	20-Mar-17	597	1083	81.3%
Colgate Palmolive	16-Sep-19	1314	1823	38.7%
D. P. Abhushan Ltd	20-Apr-22	396	495	25.0%
Dabur India	22-Oct-19	466	659	41.4%
DLF Ltd	10-Apr-19	194	450	131.6%
Dr Reddy	4-Aug-20	4530	5615	24.0%
Emami Limited	26-Jun-19	290	622	114.2%
Finolex Cables Ltd	8-Feb-21	130	268	106.2%
Fortis	14-Jul-20	127	314	147.2%
Godawari Power	20-Apr-22	455	482	6.0%
Godrej Consumer Products Limited	16-Jun-20	634	1138	79.5%
HDFC Asset Management Company Ltd.	19-Dec-18	1573	3844	144.4%
HDFC Bank Limited	10-Nov-16	639	1725	170.0%
HDFC Life Insurance Co Ltd	19-Jan-18	485	776	60.0%
Heritage Foods Ltd	20-Apr-22	330	354	7.2%
Hero Motocorp Ltd	29-Sep-20	3175	3629	14.3%
Hindustan Unilever Ltd.	13-Nov-17	1291	2859	121.5%
Housing Development Finance Corp Ltd	19-Dec-17	1720	3365	95.6%
ICICI Bank Ltd.	6-Apr-18	279	867	211.1%
ICICI Lombard General Insurance	19-Sep-19	1155	1675	45.0%
ICICI Prudential Life Insurance Company Ltd.	28-Jun-18	376	724	92.7%
ICICI Securities Ltd	24-Sep-20	467	896	92.0%
Indusindbnk	8-Jun-20	451	1242	175.4%
Infosys Ltd.	17-Aug-17	488	1954	300.7%
Kotak Mahindra Bank Ltd	10-Nov-16	822	2253	174.1%
Linde India	20-Apr-22	3499	3649	4.3%
Marico Ltd.	4-Apr-18	325	608	87.1%
Maruti Suzuki India Ltd	13-Aug-20	5989	9050	51.1%
Oberoi Realty Ltd.	23-Nov-17	509	1052	106.8%
PEL	2-Sep-20	1246	3015	141.9%
Phoenix Mills Limited	7-Jul-19	655	1200	83.2%
Poonawalla Fincorp Ltd	13-Aug-21	175	344	96.1%
Procter & Gamble Hygiene & Health Care	13-Aug-21	12870	16466	27.9%
Raymond	25-Sep-20	264	1280	385.7%
Reliance	22-Apr-20	1351	2856	111.4%
SBI Life	20-May-20	715	1293	80.8%
Shree Renuka Sugars Limited	13-Aug-21	27	63	135.1%
Spectrum Electrical	18-Apr-22	98	103	5.0%



**Weekly Expiry Most Active Nifty Call Option**

Symbol	Expiry Date	Strike Price	Highest Open Interest (Contracts)
NIFTY	20-Jun-2024	24,000	4,33,383
NIFTY	20-Jun-2024	23,800	2,32,836
NIFTY	20-Jun-2024	23,600	2,27,505

**Weekly Expiry Most Active Nifty Put Option**

Symbol	Expiry Date	Strike Price	Highest Open Interest (Contracts)
NIFTY	20-Jun-2024	23,000	4,03,395
NIFTY	20-Jun-2024	23,500	2,26,818
NIFTY	20-Jun-2024	23,400	2,12,806

**Securities in Ban For Trade Date: 20-06-2024**
**BALRAMCHIN, CHAMBLFERT, HAL, HINDCOPPER, INDIACEM, INDUSTOWER, PEL, SAIL**
**Bulk Deals (BSE)**

Deal Date	Scrip Name	Client Name	Deal Type	Quantity	Price
19-Jun-24	GLAND	FOSUN PHARMA INDUSTRIAL PTE. LTD.	S	9900000	1771.81
19-Jun-24	GLAND	UBS PRINCIPAL CAPITAL ASIA LIMITED	B	825000	1771.05
19-Jun-24	MARATHON	SAMCO MUTUAL FUND DYNAMIC ASSET ALLOCATION FUND	B	400000	592.44
19-Jun-24	ONEGLOBAL	EMINENCE GLOBAL FUND PCC- EUBILIA CAPITAL	B	52499	124.82
19-Jun-24	SHAILY	MOTILAL OSWAL MUTUAL FUND	B	1250000	675
19-Jun-24	SHAILY	MOTILAL OSWAL MUTUAL FUND(MOTILAL OS	B	713958	675
19-Jun-24	SHAILY	LIGHTHOUSE INDIA III EQUITY INVESTORS,LIMITED	S	2020105	675.03

**Bulk Deals (NSE)**

Deal Date	Scrip Name	Client Name	Deal Type	Quantity	Price
19-Jun-24	ADVENZYMES	MOTILAL OSWAL FINANCIAL SERVICES LIMITED	BUY	11053245	385
19-Jun-24	AUBANK	GOLDMAN SACHS INVESTMENTS MAURITIUS I LTD	BUY	4334080	650
19-Jun-24	FINOPB	CRONY VYAPAR PVT LTD	BUY	1180574	333.77
19-Jun-24	INDUSTOWER	SBI MUTUAL FUND	BUY	20873475	311.4
19-Jun-24	INDUSTOWER	SBI MUTUAL FUND	BUY	15000000	311.4
19-Jun-24	INDUSTOWER	GHISALLO CAPITAL MANAGEMENT LLC	BUY	19800001	311.4
19-Jun-24	INDUSTOWER	BHARTI AIRTEL LIMITED	BUY	26949369	320
19-Jun-24	INDUSTOWER	KOTAK SECURITIES LIMITED	BUY	14521136	325.48
19-Jun-24	INDUSTOWER	AUTHUM INVESTMENT AND INFRASTRUCTURE LIMITED	BUY	14900000	321.81
19-Jun-24	KNRCON	KOTAK MAHINDRA LIFE INSURANCE COMPANY LIMITED	BUY	1446823	350
19-Jun-24	KNRCON	CANARA ROBECO MUTUAL FUND	BUY	1789945	350
19-Jun-24	SANSERA	MORGAN STANLEY ASIA SINGAPORE PTE	BUY	333343	1200
19-Jun-24	SANSERA	ICICI PRUDENTIAL LIFE INSURANCE COMPANY LTD	BUY	291670	1200
19-Jun-24	SANSERA	CUSTODY BANK OF JAPAN LTD RE RB AMUNDI INDIA SMALL	BUY	1093753	1200
19-Jun-24	SANSERA	HDFC STANDARD LIFE INSURANCE CO LTD	BUY	291670	1200
19-Jun-24	SANSERA	SBI MUTUAL FUND	BUY	364584	1200
19-Jun-24	SANSERA	DSP MUTUAL FUND	BUY	639607	1200
19-Jun-24	SANSERA	DSP MUTUAL FUND	BUY	512630	1200

19-Jun-24	INDUSTOWER	AL-AMIN INVESTMENTS LIMITED	SELL	20819871	314.54
19-Jun-24	INDUSTOWER	VODAFONE TELECOMMUNICATIONS INDIA LIMITED	SELL	41640499	320.53
19-Jun-24	INDUSTOWER	VODAFONE TELECOMMUNICATIONS INDIA LIMITED	SELL	37445637	318.94
19-Jun-24	INDUSTOWER	VODAFONE TELECOMMUNICATIONS INDIA LIMITED	SELL	25127535	317.48
19-Jun-24	INDUSTOWER	VODAFONE TELECOMMUNICATIONS INDIA LIMITED	SELL	20819871	325
19-Jun-24	INDUSTOWER	SHARE INDIA SECURITIES LIMITED	SELL	13776472	329.99
19-Jun-24	INDUSTOWER	VODAFONE TELECOMMUNICATIONS (INDIA) LIMITED	SELL	41640499	311.4
19-Jun-24	INDUSTOWER	TRANS CRYSTAL LIMITED	SELL	37445637	311.95
19-Jun-24	INDUSTOWER	PRIME METALS LIMITED	SELL	56027643	311.51
19-Jun-24	INDUSTOWER	MOBILVEST	SELL	42947182	311.4
19-Jun-24	INDUSTOWER	ASIAN TELECOMMUNICATION INVESTMENTS (MAURITIUS) LIMITED	SELL	25127535	311.4
19-Jun-24	INDUSTOWER	KOTAK SECURITIES LIMITED	SELL	7307514	331.25
19-Jun-24	INDUSTOWER	VODAFONE TELECOMMUNICATIONS INDIA LIMITED	SELL	56027642	315.99
19-Jun-24	PARAS	PLUTUS RESEARCH PRIVATE LIMITED	SELL	366816	1447.02
19-Jun-24	SANSERA	CLIENT EBENE LIMITED	SELL	5030005	1200
19-Jun-24	SANSERA	CVCIGP II EMPLOYEE EBENE LIMITED	SELL	1223267	1200
19-Jun-24	ZFCVINDIA	WABCO ASIA PRIVATE LIMITED	SELL	1425000	15394.54
19-Jun-24	SANSERA	SOCIETE GENERALE	BUY	358343	1200
19-Jun-24	ZFCVINDIA	KOTAK MAHINDRA MUTUAL FUND	BUY	111972	15378
19-Jun-24	ZFCVINDIA	NIPPON INDIA MUTUAL FUND	BUY	170000	15378
19-Jun-24	ZFCVINDIA	SBI MUTUAL FUND	BUY	109247	15378
19-Jun-24	ADVENZYMES	ORBIMED ASIA III MAURITIUS LIMITED	SELL	11053245	385
19-Jun-24	AUBANK	WESTBRIDGE AIF I	SELL	13000000	650.08
19-Jun-24	INDUSTOWER	VODAFONE TELECOMMUNICATIONS INDIA LIMITED	SELL	42947183	321.28
19-Jun-24	INDUSTOWER	AL-AMIN INVESTMENTS LIMITED	SELL	20819871	314.54
19-Jun-24	INDUSTOWER	VODAFONE TELECOMMUNICATIONS INDIA LIMITED	SELL	41640499	320.53

**Note- Executed on 19<sup>th</sup> Jun 2024. Bulk Deal Buy/Sell done by fund house is considered.**

Research Analyst Registration No.	Contact	Website	mail Id
INH000002764	SMS: 'Arihant' to 56677	<a href="http://www.arihantcapital.com">www.arihantcapital.com</a>	<a href="mailto:arihant.research@arihantcapital.com">arihant.research@arihantcapital.com</a>

**Arihant is Forbes Asia's '200 Best under a \$Billion' Company  
'Best Emerging Commodities Broker' awarded by UTV Bloomberg**

**Disclaimer:** This document has been prepared by Arihant Capital Markets Limited (hereinafter called as Arihant) and its subsidiaries and associated companies. This document does not constitute an offer or solicitation for the purchase and sale of any financial instrument by Arihant. Receipt and review of this document constitutes your agreement not to circulate, redistribute, retransmit or disclose to others the contents, opinions, conclusion, or information contained herein. This document has been prepared and issued on the basis of publicly available information, internally developed data and other sources believed to be reliable. Whilst meticulous care has been taken to ensure that the facts stated are accurate and opinions given are fair and reasonable, neither the analyst nor any employee of our company is in any way is responsible for its contents and nor is its accuracy or completeness guaranteed. This document is prepared for assistance only and is not intended to be and must not alone be taken as the basis for an investment decision. All recipients of this material should before dealing and or transacting in any of the products referred to in this material make their own investigation, seek appropriate professional advice. The investments discussed in this material may not be suitable for all investors. The recipient alone shall be fully responsible/are liable for any decision taken on the basis of this material. Arihant Capital Markets Ltd (including its affiliates) or its officers, directors, personnel and employees, including persons involved in the preparation or issuance of this material may; (a) from time to time, have positions in, and buy or sell or (b) be engaged in any other transaction and earn brokerage or other compensation in the financial instruments/products discussed herein or act as advisor or lender/borrower in respect of such securities/financial instruments/products or have other potential conflict of interest with respect to any recommendation and related information and opinions. The said persons may have acted upon and/or in a manner contradictory with the information contained here and may have a position or be otherwise interested in the investment referred to in this document before its publication. The user of this report assumes the entire risk of any use made of this data/report. Arihant especially states that it has no financial liability, whatsoever, to the users of this report.

**Arihant Capital Markets Ltd**

#1011 Solitaire Corporate Park Building No.10 1<sup>st</sup> Floor  
 Andheri Ghatkopar Link Road Chakala Andheri (E) Mumbai-400093  
 T. 022-42254800. Fax: 022-42254880  
[www.arihantcapital.com](http://www.arihantcapital.com)