

To join our research group on TELEGRAM, please click on the links - <https://bit.ly/3JTeFcc> and <https://bit.ly/3TNulgc>

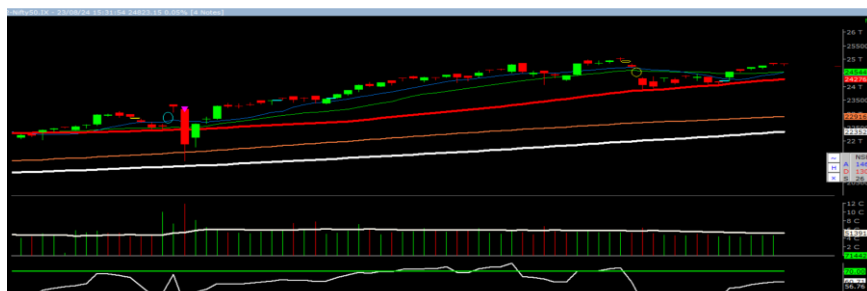
Monday, 26<sup>th</sup> Aug 2024

Indian Indices	Last Price	(%) Chg
NSE	24823.15	0.05
BSE	81086.21	0.04
World Indices	Last Price	(%) Chg
Dow Jones	41175.08	1.14
Nasdaq	17877.79	1.47
Nikkei	37944.68	-1.11
Hang Seng	17765.21	0.87
FTSE	8327.78	0.48
Commodity	Last Price	(%) Chg
GOLD(\$/ounce)	2547.05	0.03
Silver (\$/Ounce)	30.18	-0.24
Crude (\$/BBL)	75.33	0.67
Aluminium spot (\$/mt)	2542.00	2.50
Copper SPOT (\$/mt)	9307.00	1.93
Zinc (\$/MT)	2922.00	2.24
Natural gas \$/MMBtu	2.17	-0.46
Currency	Last Price	(%) Chg
USDINR	83.81	-0.14
EURINR	93.81	0.60
Bond		
India 10 Yr Bond yield	6.97	1.77

52 Wk High			52 Wk Low		
Company	Close Price	52 Wk High	Company	Close Price	52 Wk Low
ASHOKLEY	261	263	--	--	--
COLPAL	3534	3624	--	--	--
GLENMARK	1686	1694	--	--	--
HINDUNILVR	2813	2820	--	--	--
MCX	4864	4935	--	--	--

Source: Money Control (BSE 500)

### Market Technical Outlook



The Nifty opened on a subdued note traded in a narrow range with positive bias to close marginally in green. On the daily chart, we are observing five consecutive narrow range body formations, which suggests indecisiveness prevailing at current level. In coming trading sessions, if Nifty trades above 24860 level then it may test 24950 – 25020 levels. On the downside, 24710 – 24600 levels may act as support for the day.

Broadly, looking at the current price action it is evident that the 50-days SMA (24276) remains crucial support for the prices. Hence, one needs to adopt a cautiously positive approach at the current level, as stock-specific activity is likely to continue.

### Foreign Institutional Investments (FII's) Activities

Name of Segment	Net Buyer/seller	Rs In Cr
Index Futures	Net Buyer	92.33
Stock Futures	Net Buyer	2035.78
<b>Net Future Position</b>	<b>Net Buyer</b>	<b>2128.11</b>
Index Options	Net Seller	-10953.84
Stock Options	Net Seller	-107.49
<b>Net Options Position</b>	<b>Net Seller</b>	<b>-11061.33</b>
FII In cash Segment	Net Buyer	1944.48
DII In cash Segment	Net Buyer	2896.02
<b>Net Cash Position</b>	<b>Net Buyer</b>	<b>4840.50</b>

**Guru Call: From the expert's desk**

Company	Reco Date	Reco Price (Buy on dips)	High till date	Return%
Adani Power	20-Apr-22	235	345	46.6%
Adani Wilmar Ltd	20-Apr-22	668	878	31.5%
Aditya Birla Capital Ltd	13-Aug-21	124	139	12.5%
Aditya Birla Fashion and Retail Ltd	8-Feb-21	164	322	95.9%
Apcotex Industries Limited	13-Aug-21	343	679	98.0%
Asian Paints Ltd.	30-Mar-17	1068	3590	236.1%
Avenue Supermarts Ltd.	31-Jul-17	899	5900	556.6%
Axis Bank Ltd.	10-Apr-18	519	867	67.0%
Bajaj Finance Ltd	20-Apr-22	7033	7295	3.7%
Bajaj Finserv Ltd	1-Nov-16	3417	19325	465.6%
Bajaj Holdings And Investment Ltd	19-May-16	1499	6598	340.1%
CDSL	17-Sep-20	486	1734	256.9%
Chola finance	25-Sep-20	239	770	222.6%
Chola Holding	23-Sep-20	392	763	94.7%
Cipla Ltd	20-Mar-17	597	1083	81.3%
Colgate Palmolive	16-Sep-19	1314	1823	38.7%
D. P. Abhushan Ltd	20-Apr-22	396	495	25.0%
Dabur India	22-Oct-19	466	659	41.4%
DLF Ltd	10-Apr-19	194	450	131.6%
Dr Reddy	4-Aug-20	4530	5615	24.0%
Emami Limited	26-Jun-19	290	622	114.2%
Finolex Cables Ltd	8-Feb-21	130	268	106.2%
Fortis	14-Jul-20	127	314	147.2%
Godawari Power	20-Apr-22	455	482	6.0%
Godrej Consumer Products Limited	16-Jun-20	634	1138	79.5%
HDFC Asset Management Company Ltd.	19-Dec-18	1573	3844	144.4%
HDFC Bank Limited	10-Nov-16	639	1725	170.0%
HDFC Life Insurance Co Ltd	19-Jan-18	485	776	60.0%
Heritage Foods Ltd	20-Apr-22	330	354	7.2%
Hero Motocorp Ltd	29-Sep-20	3175	3629	14.3%
Hindustan Unilever Ltd.	13-Nov-17	1291	2859	121.5%
Housing Development Finance Corp Ltd	19-Dec-17	1720	3365	95.6%
ICICI Bank Ltd.	6-Apr-18	279	867	211.1%
ICICI Lombard General Insurance	19-Sep-19	1155	1675	45.0%
ICICI Prudential Life Insurance Company Ltd.	28-Jun-18	376	724	92.7%
ICICI Securities Ltd	24-Sep-20	467	896	92.0%
Indusindbnk	8-Jun-20	451	1242	175.4%
Infosys Ltd.	17-Aug-17	488	1954	300.7%
Kotak Mahindra Bank Ltd	10-Nov-16	822	2253	174.1%
Linde India	20-Apr-22	3499	3649	4.3%
Marico Ltd.	4-Apr-18	325	608	87.1%
Maruti Suzuki India Ltd	13-Aug-20	5989	9050	51.1%
Oberoi Realty Ltd.	23-Nov-17	509	1052	106.8%
PEL	2-Sep-20	1246	3015	141.9%
Phoenix Mills Limited	7-Jul-19	655	1200	83.2%
Poonawalla Fincorp Ltd	13-Aug-21	175	344	96.1%
Procter & Gamble Hygiene & Health Care	13-Aug-21	12870	16466	27.9%
Raymond	25-Sep-20	264	1280	385.7%
Reliance	22-Apr-20	1351	2856	111.4%
SBI Life	20-May-20	715	1293	80.8%
Shree Renuka Sugars Limited	13-Aug-21	27	63	135.1%
Spectrum Electrical	18-Apr-22	98	103	5.0%



**Weekly Expiry Most Active Nifty Call Option**

Symbol	Expiry Date	Strike Price	Highest Open Interest (Contracts)
NIFTY	29-Aug-2024	26,000	2,66,637
NIFTY	29-Aug-2024	25,000	2,53,490
NIFTY	29-Aug-2024	25,500	2,37,101

**Weekly Expiry Most Active Nifty Put Option**

Symbol	Expiry Date	Strike Price	Highest Open Interest (Contracts)
NIFTY	29-Aug-2024	24,000	3,27,975
NIFTY	29-Aug-2024	24,500	2,68,127
NIFTY	29-Aug-2024	24,800	2,45,474

**Securities in Ban For Trade Date: 26-08-2024**

AARTIIND, ABFRL, BALRAMCHIN, BSOFT, CHAMBLFERT, GNFC, GRANULES, HINDCOPPER, IEX, INDIACEM, NATIONALUM, RBLBANK, SUNTV

**Bulk Deals (BSE)**

Deal Date	Scrip Name	Client Name	Deal Type	Quantity	Price
23-Aug-24	AZTEC	CATALYST NEW INDIA FUND	SELL	104,000	99.32
23-Aug-24	ERAAYA	CRAFT EMERGING MARKET FUND PCC- CITADEL CAPITAL FUND	BUY	112,800	800.00
23-Aug-24	ERAAYA	CRAFT EMERGING MARKET FUND PCC- ELITE CAPITAL FUND	BUY	107,800	800.00
23-Aug-24	GLOBUSCON	EOS MULTI-STRATEGY FUND AIFLNP V.C.I.C.LTD	SELL	4010140	16.71
23-Aug-24	GLOBUSCON	ARIAL HOLDINGS 1	BUY	3910140	16.71
23-Aug-24	NYKAA	HARINDERPAL SINGH BANGA	SELL	40878740	208.3
23-Aug-24	QUINT	VESPERA FUND LIMITED	SELL	3510094	96.05
23-Aug-24	QUINT	UNICO GLOBAL OPPORTUNITIES FUND LIMITED	BUY	3510094	96.05
23-Aug-24	SEIL	THE GREAT INTERNATIONAL TUSKER FUND	SELL	1715000	114.2
23-Aug-24	SEIL	LEGENDS GLOBAL OPPORTUNITIES (SINGAPORE) PTE. LTD.	BUY	1715000	114.2
23-Aug-24	TATATECH	ALPHA TC HOLDINGS PTE LTD	SELL	9910136	1013.91
23-Aug-24	V2RETAIL	INDIA 2020 FUND II,LIMITED	SELL	400000	1061.4
23-Aug-24	V2RETAIL	MOTILAL OSWAL MUTUAL FUND SMALL CAP FUND)	BUY	410000	1062.35

**Bulk Deals (NSE)**

Deal Date	Scrip Name	Client Name	Deal Type	Quantity	Price
23-Aug-24	AMBUJACEM	GQG PARTNERS EMERGING MARKETS EQUITY FUND	BUY	17073577	625.5
23-Aug-24	HGS	LEGENDS GLOBAL OPPORTUNITIES (SINGAPORE) PTE. LTD.	BUY	711154	885.11
23-Aug-24	NIITLTD	RAMESH SHRICHAND DAMANI	BUY	800000	127.55
23-Aug-24	RANEENGINE	UBS PRINCIPAL CAPITAL ASIA LIMITED	BUY	75000	605.51
23-Aug-24	SEAMECLTD	LEGENDS GLOBAL OPPORTUNITIES (SINGAPORE) PTE. LTD.	BUY	279000	1500
23-Aug-24	WEL	UNICO GLOBAL OPPORTUNITIES FUND LIMITED	BUY	500000	1465
23-Aug-24	AMBUJACEM	HOLDERIND INVESTMENTS LIMITED	SELL	67956000	625.5
23-Aug-24	ETHOSLTD	SABOO VENTURES LLP	SELL	148648	3044.49
23-Aug-24	HGS	NEW LEAINA INVESTMENTS LIMITED	SELL	364547	906.84
23-Aug-24	JHS	SIXTH SENSE INDIA OPPORTUNITIES 11	SELL	551400	24.93
23-Aug-24	SEAMECLTD	NOMURA SINGAPORE LIMITED	SELL	279000	1500
23-Aug-24	WEL	VESPERA FUND LIMITED	SELL	500000	1465

Note- Executed on 23<sup>rd</sup> Aug 2024. Bulk Deal Buy/Sell done by fund house is considered.

Research Analyst Registration No.	Contact	Website	mail Id
INH000002764	SMS: 'Arihant' to 56677	<a href="http://www.arihantcapital.com">www.arihantcapital.com</a>	<a href="mailto:arihant.research@arihantcapital.com">arihant.research@arihantcapital.com</a>

**Arihant is Forbes Asia's '200 Best under a \$Billion' Company  
'Best Emerging Commodities Broker' awarded by UTV Bloomberg**

**Disclaimer:** This document has been prepared by Arihant Capital Markets Limited (hereinafter called as Arihant) and its subsidiaries and associated companies. This document does not constitute an offer or solicitation for the purchase and sale of any financial instrument by Arihant. Receipt and review of this document constitutes your agreement not to circulate, redistribute, retransmit or disclose to others the contents, opinions, conclusion, or information contained herein. This document has been prepared and issued on the basis of publicly available information, internally developed data and other sources believed to be reliable. Whilst meticulous care has been taken to ensure that the facts stated are accurate and opinions given are fair and reasonable, neither the analyst nor any employee of our company is in any way is responsible for its contents and nor is its accuracy or completeness guaranteed. This document is prepared for assistance only and is not intended to be and must not alone be taken as the basis for an investment decision. All recipients of this material should before dealing and or transacting in any of the products referred to in this material make their own investigation, seek appropriate professional advice. The investments discussed in this material may not be suitable for all investors. The recipient alone shall be fully responsible/are liable for any decision taken on the basis of this material. Arihant Capital Markets Ltd (including its affiliates) or its officers, directors, personnel and employees, including persons involved in the preparation or issuance of this material may; (a) from time to time, have positions in, and buy or sell or (b) be engaged in any other transaction and earn brokerage or other compensation in the financial instruments/products discussed herein or act as advisor or lender/borrower in respect of such securities/financial instruments/products or have other potential conflict of interest with respect to any recommendation and related information and opinions. The said persons may have acted upon and/or in a manner contradictory with the information contained here and may have a position or be otherwise interested in the investment referred to in this document before its publication. The user of this report assumes the entire risk of any use made of this data/report. Arihant especially states that it has no financial liability, whatsoever, to the users of this report.

**Arihant Capital Markets Ltd**

#1011 Solitaire Corporate Park Building No.10 1<sup>st</sup> Floor  
 Andheri Ghatkopar Link Road Chakala Andheri (E) Mumbai-400093  
 T. 022-42254800. Fax: 022-42254880  
[www.arihantcapital.com](http://www.arihantcapital.com)