

To join our research group on TELEGRAM, please click on the links - <https://bit.ly/3JTeFcc> and <https://bit.ly/3TNulgc>

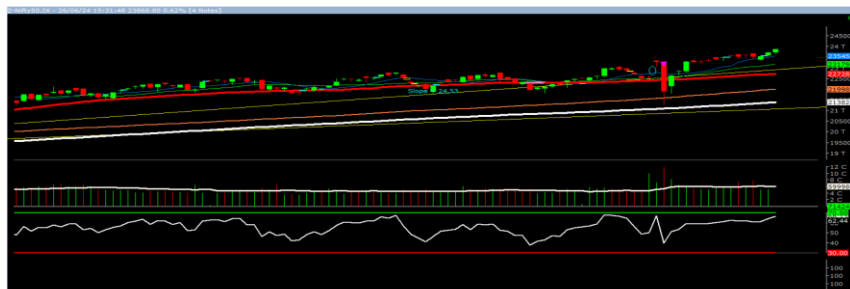
Friday, 28th Jun 2024

Indian Indices	Last Price	(%) Chg
NSE	24044.50	0.74
BSE	79243.18	0.72
World Indices	Last Price	(%) Chg
Dow Jones	39164.06	0.09
Nasdaq	17857.88	0.30
Nikkei	39619.00	0.80
Hang Seng	17667.00	0.84
FTSE	8179.68	-0.55
Commodity	Last Price	(%) Chg
GOLD(\$/ounce)	2334.55	-0.09
Silver (\$/Ounce)	29.42	0.48
Crude (\$/BBL)	82.27	0.65
Aluminium spot (\$/mt)	2512.00	0.52
Copper SPOT (\$/mt)	9579.50	0.53
Zinc (\$/MT)	2966.50	0.66
Natural gas \$/MMBtu	2.70	0.22
Currency	Last Price	(%) Chg
USDINR	83.44	-0.13
EURINR	89.30	0.08
Bond		
India 10 Yr Bond yield	7.00	0.06

52 Wk High			52 Wk Low		
Company	Close Price	52 Wk High	Company	Close Price	52 Wk Low
AFFLE	1333	1393	--	--	--
AXISBANK	1289	1308	--	--	--
BHARTIARTL	1482	1489	--	--	--
CESC	165	171	--	--	--
GRASIM	2630	2654	--	--	--

Source: Money Control (BSE 500)

Market Technical Outlook



Nifty opened on a lower but momentum on the upside intensified during the day to close in green. On the daily chart, we are observing, that nifty made a new all-time high of 24061 and formed a positive candle. This suggest that momentum on the upside is likely to continue. In coming trading session if nifty trades above 24062 level then it may test 24150 - 24245 levels. On the downside, 23945 - 23860 levels may act as support for the day.

We maintain our stance that momentum on the upside is likely to continue. Hence, one can adopt cautiously positive approach at current level, as stock specific activity is likely to continue.

Foreign Institutional Investments (FII's) Activities

Name of Segment	Net Buyer/seller	Rs In Cr
Index Futures	Net Buyer	4368.68
Stock Futures	Net Buyer	8129.43
Net Future Position	Net Buyer	12498.11
Index Options	Net Buyer	24698.53
Stock Options	Net Seller	-1682.09
Net Options Position	Net Buyer	23016.44
FII In cash Segment	Net Buyer	7658.77
DII In cash Segment	Net Seller	-3605.93
Net Cash Position	Net Buyer	4052.84

Guru Call: From the expert's desk

Company	Reco Date	Reco Price (Buy on dips)	High till date	Return%
Adani Power	20-Apr-22	235	345	46.6%
Adani Wilmar Ltd	20-Apr-22	668	878	31.5%
Aditya Birla Capital Ltd	13-Aug-21	124	139	12.5%
Aditya Birla Fashion and Retail Ltd	8-Feb-21	164	322	95.9%
Apcotex Industries Limited	13-Aug-21	343	679	98.0%
Asian Paints Ltd.	30-Mar-17	1068	3590	236.1%
Avenue Supermarts Ltd.	31-Jul-17	899	5900	556.6%
Axis Bank Ltd.	10-Apr-18	519	867	67.0%
Bajaj Finance Ltd	20-Apr-22	7033	7295	3.7%
Bajaj Finserv Ltd	1-Nov-16	3417	19325	465.6%
Bajaj Holdings And Investment Ltd	19-May-16	1499	6598	340.1%
CDSL	17-Sep-20	486	1734	256.9%
Chola finance	25-Sep-20	239	770	222.6%
Chola Holding	23-Sep-20	392	763	94.7%
Cipla Ltd	20-Mar-17	597	1083	81.3%
Colgate Palmolive	16-Sep-19	1314	1823	38.7%
D. P. Abhushan Ltd	20-Apr-22	396	495	25.0%
Dabur India	22-Oct-19	466	659	41.4%
DLF Ltd	10-Apr-19	194	450	131.6%
Dr Reddy	4-Aug-20	4530	5615	24.0%
Emami Limited	26-Jun-19	290	622	114.2%
Finolex Cables Ltd	8-Feb-21	130	268	106.2%
Fortis	14-Jul-20	127	314	147.2%
Godawari Power	20-Apr-22	455	482	6.0%
Godrej Consumer Products Limited	16-Jun-20	634	1138	79.5%
HDFC Asset Management Company Ltd.	19-Dec-18	1573	3844	144.4%
HDFC Bank Limited	10-Nov-16	639	1725	170.0%
HDFC Life Insurance Co Ltd	19-Jan-18	485	776	60.0%
Heritage Foods Ltd	20-Apr-22	330	354	7.2%
Hero Motocorp Ltd	29-Sep-20	3175	3629	14.3%
Hindustan Unilever Ltd.	13-Nov-17	1291	2859	121.5%
Housing Development Finance Corp Ltd	19-Dec-17	1720	3365	95.6%
ICICI Bank Ltd.	6-Apr-18	279	867	211.1%
ICICI Lombard General Insurance	19-Sep-19	1155	1675	45.0%
ICICI Prudential Life Insurance Company Ltd.	28-Jun-18	376	724	92.7%
ICICI Securities Ltd	24-Sep-20	467	896	92.0%
Indusindbnk	8-Jun-20	451	1242	175.4%
Infosys Ltd.	17-Aug-17	488	1954	300.7%
Kotak Mahindra Bank Ltd	10-Nov-16	822	2253	174.1%
Linde India	20-Apr-22	3499	3649	4.3%
Marico Ltd.	4-Apr-18	325	608	87.1%
Maruti Suzuki India Ltd	13-Aug-20	5989	9050	51.1%
Oberoi Realty Ltd.	23-Nov-17	509	1052	106.8%
PEL	2-Sep-20	1246	3015	141.9%
Phoenix Mills Limited	7-Jul-19	655	1200	83.2%
Poonawalla Fincorp Ltd	13-Aug-21	175	344	96.1%
Procter & Gamble Hygiene & Health Care	13-Aug-21	12870	16466	27.9%
Raymond	25-Sep-20	264	1280	385.7%
Reliance	22-Apr-20	1351	2856	111.4%
SBI Life	20-May-20	715	1293	80.8%
Shree Renuka Sugars Limited	13-Aug-21	27	63	135.1%
Spectrum Electrical	18-Apr-22	98	103	5.0%

Guru Call: From the expert's desk

Company	Reco Date	Reco Price (Buy on dips)	High till date	Return%
State Bank of India	3-Feb-21	336	549	63.4%
Sun Pharma	7-Aug-20	525	967	84.2%
Sun TV Network Ltd.	13-Aug-21	525	612	16.5%
Tata Chemicals Limited	24-Dec-19	297	1158	290.0%
Tata Consultancy Services Ltd.	8-Jan-18	1345	4046	200.9%
Tata motors	20-Apr-22	441	450	2.0%
Tata motors dvr	20-Apr-22	220	226	2.6%
Tata Power	20-Apr-22	249	260	4.4%
Trent Ltd.	19-Dec-18	348	1347	286.6%
Ultratech Cement Ltd.	19-Dec-18	4085	8269	102.4%
UTI Asset Management Company Ltd	13-Aug-21	1044	1217	16.6%
Vedanta Ltd	28-Jun-21	261	441	69.1%
Voltas Ltd.	27-Mar-18	614	1357	121.0%
Whirlpool Of India Ltd.	7-Dec-16	872	2550	192.3%
Wipro Limited	13-Aug-21	616	740	20.2%

NIFTY 50 STOCKS BELOW 200SMA

SCRIP NAME	SMA 200	CLOSING (27-06-2024)
ITC	436.84	425.6
ASIANPAINT	3033.6	2880.85
TITAN	3490.86	3380.6
BAJAJFINSV	1609.15	1603.1
HDFCLIFE	614.61	593.25
--	--	--
--	--	--
--	--	--
--	--	--
--	--	--
--	--	--
--	--	--
--	--	--
--	--	--
--	--	--
--	--	--
--	--	--
--	--	--
--	--	--
--	--	--
--	--	--
--	--	--
--	--	--
--	--	--
--	--	--
--	--	--
--	--	--
--	--	--
--	--	--
--	--	--
--	--	--
--	--	--

Weekly Expiry Most Active Nifty Call Option

Symbol	Expiry Date	Strike Price	Highest Open Interest (Contracts)
NIFTY	04-Jul-2024	25,000	2,27,901
NIFTY	04-Jul-2024	24,000	1,72,324
NIFTY	04-Jul-2024	24,500	1,02,954

Weekly Expiry Most Active Nifty Put Option

Symbol	Expiry Date	Strike Price	Highest Open Interest (Contracts)
NIFTY	04-Jul-2024	24,000	2,17,692
NIFTY	04-Jul-2024	23,000	1,62,669
NIFTY	04-Jul-2024	22,500	1,41,013

Securities in Ban For Trade Date: 28-06-2024

NIL

Bulk Deals (BSE)

Deal Date	Scrip Name	Client Name	Deal Type	Quantity	Price
27-Jun-24	ACI	GOLDMAN SACHS FUNDS - GOLDMAN SACHS INDIA	B	628128	658
27-Jun-24	ACI	PIRAMAL NATURAL RESOURCES PRIVATE LIMITED	S	3388125	658
27-Jun-24	ACI	INDIA RESURGENCE FUND - SCHEME 2	S	5723083	658
27-Jun-24	ACI	INDIA RESURGENCE FUND - SCHEME 1	S	3388125	658
27-Jun-24	COTFAB	CRAFT EMERGING MARKET FUND PCC- CITADEL	B	150000	72
27-Jun-24	INDIACEM	ULTRATECH CEMENT LIMITED	B	70564656	267.74
27-Jun-24	INDIACEM	DERIVE INVESTMENTS	S	4149029	283.3
27-Jun-24	INDIACEM	DERIVE TRADING AND RESORTS PRIVATE LIMITED	S	2775000	283.3
27-Jun-24	INDIACEM	GOPIKISHAN SHIVKISHAN DAMANI	S	25116325	265.1
27-Jun-24	INDIACEM	KIRAN DEVI DAMANI	S	1933399	283.3
27-Jun-24	INDIACEM	RADHAKISHAN SHIVKISHAN DAMANI	S	35132658	265.05
27-Jun-24	INDIASHLTR	MIO STARROCK	S	1144802	730
27-Jun-24	INDRANIB	NEXT ORBIT VENTURES FUND	S	1000000	58.86
27-Jun-24	ONEGLOBAL	EMINENCE GLOBAL FUND PCC- EUBILIA CAPITAL	B	167915	140.53
27-Jun-24	SGMART	ASHISH RAMESHCHANDRA KACHOLIA	B	910000	440
27-Jun-24	SGMART	SG LOGISTIC MANAGEMENT PRIVATE LIMITED	B	2500000	440
27-Jun-24	SGMART	DHRUV GUPTA	S	3576772	442.28
27-Jun-24	SGMART	MEENAKSHI GUPTA	S	2498820	440
27-Jun-24	STYRENIX	VALLABH ROOPCHAND BHANSALI	B	100000	1860
27-Jun-24	STYRENIX	ENAM INVESTMENT & SERVICES PRIVATE LIMITED	B	200000	1860
27-Jun-24	STYRENIX	IKIGAI EMERGING EQUITY FUND	B	134400	1860
27-Jun-24	STYRENIX	SAGEONE INVESTMENT MANAGERS LLP	B	240000	1860
27-Jun-24	STYRENIX	SUBHKAM VENTURES I PRIVATE LIMITED	B	200000	1860
27-Jun-24	STYRENIX	BENGAL FINANCE & INVESTMENT PVT. LTD.	B	107500	1860
27-Jun-24	STYRENIX	NIPPON INDIA MUTUAL FUND	B	250000	1860
27-Jun-24	STYRENIX	BANDHAN MUTUAL FUND	B	134408	1860
27-Jun-24	STYRENIX	MOTILAL OSWAL MUTUAL FUND	B	225000	1860
27-Jun-24	STYRENIX	SAGEONE-FLAGSHIP GROWTH 2 FUND	B	105000	1861
27-Jun-24	WARDINMOBI	WARDWIZARD SOLUTIONS INDIA PRIVATE LIMITED	S	1600000	56.59

Bulk Deals (NSE)

Deal Date	Scrip Name	Client Name	Deal Type	Quantity	Price
27-Jun-24	CSBBANK	ABU DHABI INVESTMENT AUTHORITY - WAY	BUY	1015000	352.75
27-Jun-24	CSBBANK	INDIA ACORN ICAV - ASHOKA INDIA OPPORTUNITIES FUND	BUY	1606000	352.75
27-Jun-24	CSBBANK	ICICI PRUDENTIAL MUTUAL FUND	BUY	1200000	352.75
27-Jun-24	CSBBANK	AMANSA HOLDINGS PRIVATE LIMITED	BUY	8277500	352.75
27-Jun-24	INDIACEM	AUTHUM INVESTMENT & INFRASTRUCTURE LIMITED	BUY	2620000	286.9
27-Jun-24	INDIACEM	SOCIETE GENERALE	BUY	4403226	288.51
27-Jun-24	INDIACEM	BNP PARIBAS FINANCIAL MARKETS	BUY	3104773	283.94
27-Jun-24	OMAXE	EBISU GLOBAL OPPORTUNITIES FUND LIMITED	BUY	2700000	106.75
27-Jun-24	OMAXE	NOMURA SINGAPORE LIMITED	SELL	2700000	106.75
27-Jun-24	SIGNORIA	AG DYNAMIC FUNDS LIMITED	SELL	66000	124.68
27-Jun-24	SIGNORIA	MERU INVESTMENT FUND PCC-CELL 1	SELL	72000	119.56
27-Jun-24	ZEEL	KOTAK MAHINDRA MUTUAL FUND A/C. KOTAK BALANCED	SELL	5130000	154.2

Note- Executed on 27th Jun 2024. Bulk Deal Buy/Sell done by fund house is considered.

Research Analyst Registration No.

INH000002764

Contact

SMS: 'Arihant' to 56677

Website

www.arihantcapital.com

mail Id

arihant.research@arihantcapital.com

**Arihant is Forbes Asia's '200 Best under a \$Billion' Company
'Best Emerging Commodities Broker' awarded by UTV Bloomberg**

Disclaimer: This document has been prepared by Arihant Capital Markets Limited (hereinafter called as Arihant) and its subsidiaries and associated companies. This document does not constitute an offer or solicitation for the purchase and sale of any financial instrument by Arihant. Receipt and review of this document constitutes your agreement not to circulate, redistribute, retransmit or disclose to others the contents, opinions, conclusion, or information contained herein. This document has been prepared and issued on the basis of publicly available information, internally developed data and other sources believed to be reliable. Whilst meticulous care has been taken to ensure that the facts stated are accurate and opinions given are fair and reasonable, neither the analyst nor any employee of our company is in any way is responsible for its contents and nor is its accuracy or completeness guaranteed. This document is prepared for assistance only and is not intended to be and must not alone be taken as the basis for an investment decision. All recipients of this material should before dealing and or transacting in any of the products referred to in this material make their own investigation, seek appropriate professional advice. The investments discussed in this material may not be suitable for all investors. The recipient alone shall be fully responsible/are liable for any decision taken on the basis of this material. Arihant Capital Markets Ltd (including its affiliates) or its officers, directors, personnel and employees, including persons involved in the preparation or issuance of this material may; (a) from time to time, have positions in, and buy or sell or (b) be engaged in any other transaction and earn brokerage or other compensation in the financial instruments/products discussed herein or act as advisor or lender/borrower in respect of such securities/financial instruments/products or have other potential conflict of interest with respect to any recommendation and related information and opinions. The said persons may have acted upon and/or in a manner contradictory with the information contained here and may have a position or be otherwise interested in the investment referred to in this document before its publication. The user of this report assumes the entire risk of any use made of this data/report. Arihant especially states that it has no financial liability, whatsoever, to the users of this report.

Arihant Capital Markets Ltd

#1011 Solitaire Corporate Park Building No.10 1st Floor
Andheri Ghatkopar Link Road Chakala Andheri (E) Mumbai-400093
T. 022-42254800. Fax: 022-42254880
www.arihantcapital.com