

Tuesday, Dec 17th, 2013

Technical Stock to Focus for short – midterm (keep Stop loss for any trade)

	Buy / Sell	CMP	Stop Loss	Target
Cipla Ltd	Buy at current level	375.90	363	395 - 416

Indian Indices	BSE	NSE
Open	20714.26	6168.35
High	20764.52	6183.25
Low	20637.77	6146.05
Close	20659.52	6154.70
Change	-56.06	-13.70
% Chg	-0.27	-0.22

Source: BSE NSE

Global Indices	Close	(%) Chg
Dow Jones	15884.57	0.82
Nasdaq	4029.52	0.71
Nikkei	15295.60	0.94
Hang Seng	23189.24	0.32
FTSE	6522.20	1.28

Source: Bloomberg .

Commodity	Close	Chg
Gold(\$/Ounce)	1240.80	-3.60
Silver (\$/Ounce)	19.91	-0.19
Crude (\$/bbl)	97.32	-0.16

Source: Bloomberg

Currency	Close	(%) Chg
Rs/USD	61.85	-0.80
Rs/EUR	85.23	-0.35

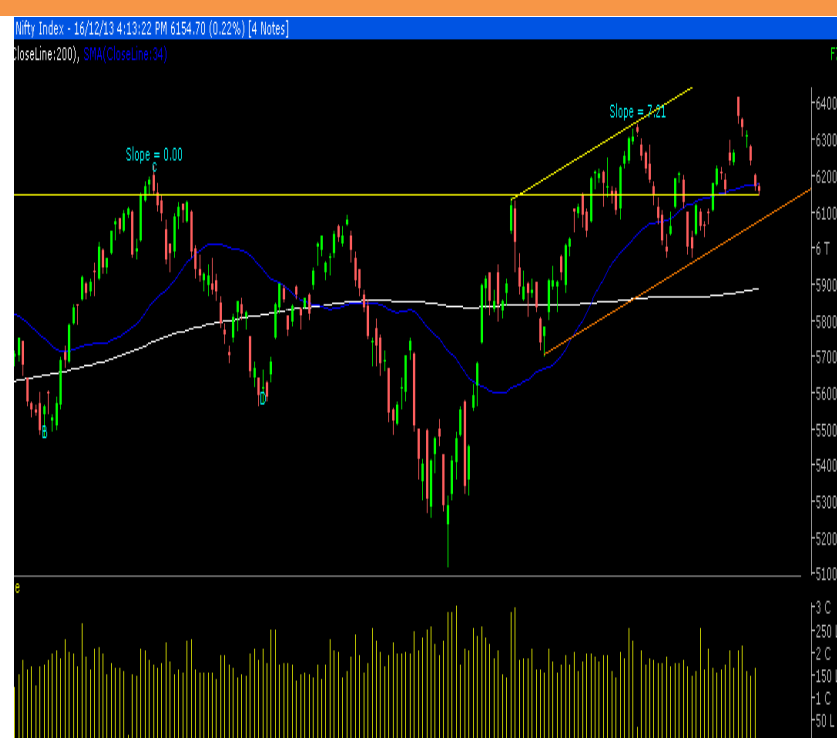
Source: MCX-SX.Com.

Support/Resistance	Nifty	Sensex
Support 1	6140	20609
Support 2	6124	20482
Resistance 1	6176	20736
Resistance 2	6198	20863

52 Wk High (A group)			52 Wk Low (A group)		
Company	Close Price	52 Wk High	Company	Close Price	52 Wk Low
Aurobindo	348.9	351.5	Bhartelec	1009	1007
CESC	429.0	430.2	Jet Air	261.7	260.3
Glaxosmith	2927	2952	Wockhart	339.6	336.6
HCL Tech	1187	1194	--	--	--
Infosys	3449	3460	--	--	--

Source: BSE

Market Overview And Technical Outlook



Source- Iris

Markets opened on a subdued note and traded a narrow band with negative bias to close marginal in red. On the sectoral front Oil & Gas, FMCG and Auto ended on the losing side whereas IT and Teck ended with decent gains. The advance decline ratio was in favour of declining counters (Advances = 1082/Declines = 1349).

Pattern Formation: On the daily chart, we are observing a narrow range body formation which reflects indecisiveness prevailing at current level.

Future Outlook: The current price action on the daily chart is at crucial support level of 6150. Any daily close below the mentioned level would drag indices to 6100 – 5950 level. On the flip side if Nifty for first hour manages to stay above 6150 level then a bounce up to 6200 – 6250 levels cannot be ruled out.

Market Breadth	NSE	BSE
Advances	475	1082
Declines	674	1349
Same	61	181
A/D Ratio	0.70:1	0.80:1

Source: BSE NSE

Market Turnover (Rs. in crores)				
Indices	16-Dec	13-Dec	Chg	(%)chg
BSE	1699.61	1750.30	-50.69	-2.90
NSE	9846.66	10389.51	-542.85	-5.22
Futures	24124.96	24522.95	-397.99	-1.62
Options	85538.44	106243.4	-20704.96	-19.49
Total	121210	142906	-21696.49	-15.18

Source: BSE NSE

Indices Watch		
Indices	Close	(%) Chg
Bank Nifty	11372.95	0.05
CNX IT	9110.25	1.70
BSE Midcap	6321.14	0.30
CNX Midcap	7637.05	0.42
BSE Small Cap	6152.91	0.36
BSE Auto	11949.54	-0.70
BSE Bankex	12962.94	-0.05
BSE Capital Goods	9896.03	0.44
BSE Consumer Durables	5689.39	1.20
BSE FMCG	6369.51	-0.49
BSE HC	9486.88	0.81
BSE IT	8690.49	1.56
BSE Metal	9640.73	0.20
BSE Oil & Gas	8426.38	-1.61
BSE Power	1633.16	0.33
BSE PSU	5686.92	-0.29
BSE Realty	1341.60	0.13
BSE TEck	4850.95	1.03
India VIX	18.36	2.91

Source: BSE NSE

Index PE	16-Dec	Yr high	Yr low
Nifty	18.27	25.91	15.23
Sensex	17.57	24.47	15.84

Source: BSE NSE

Macro Economic Data	Current	Previous
Monthly Inflation (m-o-m)	7.52%	7.00%
IIP growth (m-o-m)	-1.80%	2.00%
Repo Rate	7.75%	7.50%
Reverse Repo Rate	6.75%	6.50%
CRR	4.00%	4.00%
GDP Growth (q-o-q)	4.80%	4.40%

Source: Various

Data Alert From India –

- N.A.

Data Alert From Overseas –

- UK CPI y/y at 3:00 pm.
- UK PPI Input m/m at 3:00 pm.
- German ZEW Economic Sentiment at 3:30 pm.
- Europe CPI y/y at 3:30 pm.
- US Core CPI m/m at 7:00 pm.
- US Current Account at 7:00 pm.
- US NAHB Housing Market Index at 8:30 pm.

Domestic Stock Specific News –

- India WPI inflation rises to 14-month high of 7.52% in Nov
- Parliament session may be extended if needed to pass Lokpal bill
- India adds 4.87 mln GSM users in Nov; Bharti Airtel leads
- Source says oil min steps in to secure Venezuela dividend for ONGC
- Source says CESC wants Coal India to accept medium-term power pacts
- SC defers hearing on clinical trials of 157 new drugs by 5 weeks
- RIL Oct-Dec advance tax 16.0 bln rupees vs 15.35 bln
- SpiceJet COO sees co turnaround in a year, equity infusion likely soon
- Titan Co MD says to launch around 60 new stores by Mar-end
- Raymond to raise 350 mln rupees via 3-year zero-coupon bonds
- PNB shareholders OK 8.6-mln-shr issue to govt at 581.63 rupee each
- YES Bank Oct-Dec advance tax 2.68 bln rupees vs 2.10 bln
- Coal India to appeal against competition panel penalty

International News –

- US Flash Manufacturing PMI fell to 54.4 from 54.7
- US Nov Industrial Production rose 1.1% from 0.1%

Macro Economic Calendar	Date
Indian Monetary Policy	18 th Dec 2013
Indian IIP Data	10 th Jan 2014
Indian Inflation Data	14 th Jan 2014
Indian GDP Data	28 th Feb 2014

Source: Various

FII and DII Cash Activities 16-12-2013 –

Date	FIIs			DII			Total Net (Rs cr)
	Purchase (Rs cr)	Sales (Rs cr)	Net (Rs cr)	Purchase (Rs cr)	Sales (Rs cr)	Net (Rs cr)	
16/12/13	2333.74	2174.19	159.55	997.80	1127.30	-129.50	30.05
13/12/13	3121.35	3553.37	-432.02	991.13	1036.20	-45.07	-477.09
12/12/13	2876.19	2688.39	187.81	750.14	1104.99	-354.85	-167.04
11/12/13	2972.33	2009.62	962.71	712.69	1554.64	-841.95	120.76
10/12/13	4574.97	4179.29	395.68	1165.87	1794.03	-628.16	-232.48
Month to date – Dec	257428.27	222937.16	34491.02	82787.30	113261.22	-30473.96	3980.33

(Data Source: NSE; Rs in crores)

The FII's total buying on 16-12-2013 is Rs 159.55 Cr while DII total selling Rs 129.50 Cr.

FII Derivative Statistics 16-12-2013 –

Symbol	BUY		SELL		Total	OPEN INTEREST			
	No. of contracts	Amt in Crores	No. of contracts	Amt in Crores		No. of contracts	Amt in Crores	Amt. Cr. (Pre. Day)	Change in OI%
INDEX FUTURES	33039	1011.83	51380	1575.35	-563.52	594990	18322.58	17592.72	4.15
INDEX OPTIONS	320587	9702.47	334463	10161.08	-458.61	1738898	53303.39	52513.73	1.50
STOCK FUTURES	56461	1642.93	55362	1571.25	71.68	1162702	31801.51	31756.25	0.14
STOCK OPTIONS	34815	995.58	35800	1024.86	-29.28	51706	1371.25	1357.49	1.01
TOTAL	444902	13352.81	477005	14332.53	-979.72	3548296	104798.73	103220.19	1.53

- Open Interest of derivative segment increased to Rs 104798.73 Cr vs Rs 103220.19 Cr.
- FIIs net sellers in index futures to the amount of Rs 563.52 Cr and in index options net sellers to the amount of Rs 458.61 Cr.
- Put-Call Ratio at 0.87 vs 0.87 (Bullish).

Most Active Nifty Call Option Contracts –

Symbol	Expiry Date	Strike Price	No. of Contracts Traded	% Change in Contracts	Contract Value (Rs. Lakhs)	Closing Price	% Change in Price	Open Interest (OI)	% Change in OI
NIFTY	26-Dec-13	6300	334185	-18.70	1057850.92	27.40	-24.93	6750650	4.42
NIFTY	26-Dec-13	6200	300676	13.38	942305.05	62.00	-20.56	3787400	14.78
NIFTY	26-Dec-13	6400	189617	-37.54	607895.98	10.00	-30.56	4852250	3.31
NIFTY	26-Dec-13	6500	106338	-43.78	345828.72	3.55	-32.38	5171850	-3.00
NIFTY	26-Dec-13	6100	53843	39.83	167601.95	118.00	-11.91	1612650	10.89

Most active Nifty call option is at 6300 with 334185 contracts 2nd highest active Call at Strike 6200.

Most Active Nifty Put Option Contracts –

Symbol	Expiry Date	Strike Price	No. of Contracts Traded	% Change in Contracts	Contract Value (Rs. Lakhs)	Closing Price	% Change in Price	Open Interest (OI)	% Change in OI
NIFTY	26-Dec-13	6100	272973	-10.97	838212.73	43.00	24.82	4764000	5.02
NIFTY	26-Dec-13	6200	253099	-27.56	794896.64	84.50	20.63	3513900	-4.98
NIFTY	26-Dec-13	6000	179103	-16.68	539007.79	19.45	24.28	5614550	5.53
NIFTY	26-Dec-13	5900	81292	-16.01	240152.42	8.30	16.08	3138900	-1.16
NIFTY	26-Dec-13	5800	65272	38.37	189419.67	3.85	5.48	2342200	-14.52

Most active Nifty put option is at 6100 with 272973 contracts 2nd highest active put at Strike 6200.

Most Active Stock Future –

Symbol	Expiry Date	No. of Contracts Traded	Contract Value (Rs. Lakhs)	Closing Price	% Change in Price Close	Open Interest (OI)	% Change in OI	Value of Underlying
AUROPHARMA	26-Dec-13	24411	163978.45	349.75	12.21	14068000	1.71	350.00
SBIN	26-Dec-13	22632	49534.94	1741.35	-0.77	6281125	0.45	1730.00
AXISBANK	26-Dec-13	17821	56170.46	1263.75	1.56	5307750	-0.94	1256.50
TCS	26-Dec-13	17325	44045.78	2030.20	0.66	6061500	-0.64	2020.20
ICICIBANK	26-Dec-13	17049	46983.63	1103.05	0.99	10525750	-3.37	1095.10

Most active stock future is **AUROPHARMA** with 24411 contracts while 2nd active stock is **SBIN**.

Open Interest Figures (December Month Future) –

Bullish Trend : ↑ in OI - ↑ in Price					Bearish Trend : ↓ in OI - ↓ in Price				
Symbol	Open Interest	% Chg in OI	Price	% Chg in Price	Symbol	Open Interest	% Chg in OI	Price	% Chg in Price
CESC	797000	18.25	431.00	2.61	JPOWER	14176000	7.92	18.25	-2.67
ARVIND	6604000	17.51	124.35	3.15	PETRONET	2122000	5.78	121.00	-1.06
OFSS	185625	15.83	3209.80	3.99	BHARTIARTL	14272000	5.34	315.25	-2.40
GSKCONS	9500	15.15	4491.15	0.38	TATAMTRDVR	10374000	5.13	186.85	-2.83
TECHM	2498500	7.79	1752.95	3.23	AMBUJACEM	9338000	4.29	176.20	-2.00

Short Covering: ↓ In OI - ↓ In Price					Long Position Squared Off: ↓ In OI - ↓ In Price				
Symbol	Open Interest	% Chg in OI	Price	% Chg in Price	Symbol	Open Interest	% Chg in OI	Price	% Chg in Price
COALINDIA	8219000	-8.29	287.10	0.95	TATACHEM	1079000	-9.40	265.00	-1.36
ADANIENT	3921000	-6.93	259.45	3.84	ANDHRABANK	5760000	-4.38	59.70	-0.58
PFC	5940000	-4.78	153.10	3.97	JUBLFOOD	1653750	-4.10	1303.75	-1.47
RELCAPITAL	6161000	-4.60	361.95	0.03	TATAMOTORS	20579000	-3.83	369.20	-0.70
IDFC	25108000	-3.42	104.65	0.67	BANKINDIA	6111000	-2.95	207.65	-1.24

**Securities in Ban For Trade Date 17-12-2013**

NIL

Today's Result –

N.A.

EX- Dividend + Board Meeting -**EX-Dividend – N.A.****Board Meeting (Purpose) – Hittco Tools (General)****Bulk Deals (NSE)***

Deal Date	Script Name	Client Name	Deal Type	Quantity	Price
16-Dec-13	Speciality Rest Ltd	SAIF INDIA IV FII HOLDINGS LIMITED	BUY	1500000	124.99

Bulk Deals (BSE)*

N.A.

Note- Executed on 16th Dec, 2013. Bulk Deal Buy/sell done by fund house is considered.



contact

SMS: 'Arihant' to 56677

Website

www.arihantcapital.com

Email Id

research@arihantcapital.com

**Arihant is Forbes Asia's '200 Best under a \$Billion' Company
'Best Emerging Commodities Broker' awarded by UTV Bloomberg**

Disclaimer: This document has been prepared by Arihant Capital Markets Limited (hereinafter called as Arihant) and its subsidiaries and associated companies. This document does not constitute an offer or solicitation for the purchase and sale of any financial instrument by Arihant. Receipt and review of this document constitutes your agreement not to circulate, redistribute, retransmit or disclose to others the contents, opinions, conclusion, or information contained herein. This document has been prepared and issued on the basis of publicly available information, internally developed data and other sources believed to be reliable. Whilst meticulous care has been taken to ensure that the facts stated are accurate and opinions given are fair and reasonable, neither the analyst nor any employee of our company is in any way is responsible for its contents and nor is its accuracy or completeness guaranteed. This document is prepared for assistance only and is not intended to be and must not alone be taken as the basis for an investment decision. All recipients of this material should before dealing and or transacting in any of the products referred to in this material make their own investigation, seek appropriate professional advice. The investments discussed in this material may not be suitable for all investors. The recipient alone shall be fully responsible/are liable for any decision taken on the basis of this material. Arihant Capital Markets Ltd (including its affiliates) or its officers, directors, personnel and employees, including persons involved in the preparation or issuance of this material may; (a) from time to time, have positions in, and buy or sell or (b) be engaged in any other transaction and earn brokerage or other compensation in the financial instruments/products discussed herein or act as advisor or lender/borrower in respect of such securities/financial instruments/products or have other potential conflict of interest with respect to any recommendation and related information and opinions. The said persons may have acted upon and/or in a manner contradictory with the information contained here and may have a position or be otherwise interested in the investment referred to in this document before its publication. The user of this report assumes the entire risk of any use made of this data / Report. Arihant especially states that it has no financial liability, whatsoever, to the users of this Report.

ARIHANT Capital Markets Ltd

3rd Floor Krishna Bhavan 67 Nehru Road Vile Parle (E) Mumbai 400057.

T. 022-42254800. Fax: 022-42254880

www.arihantcapital.com

RCH-DMU-01